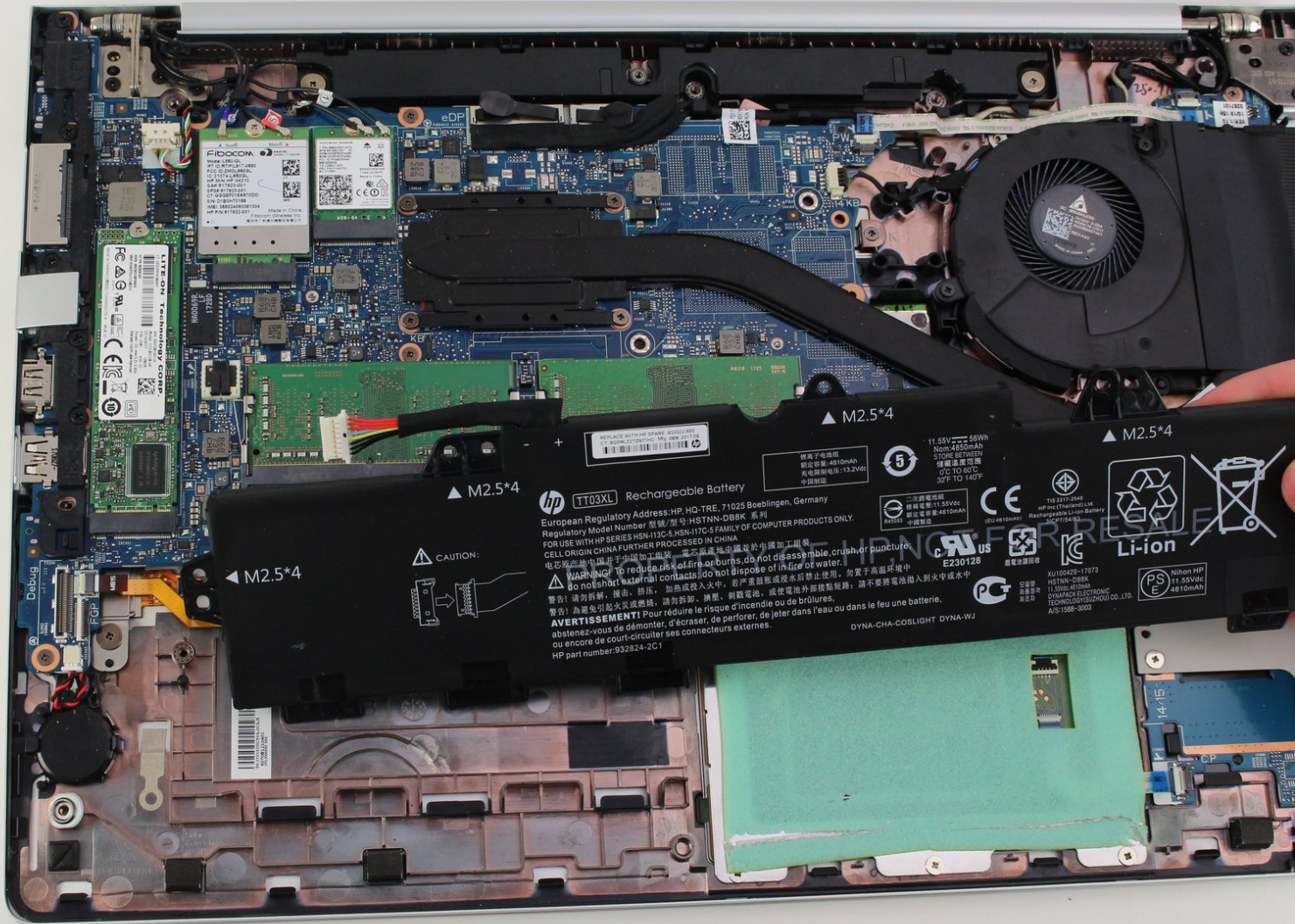




HP EliteBook 840 G5 Battery Replacement

In only a couple easy steps, this guide will take you through disassembling your computer shell and replacing the battery.

Written By: Ryan McMullen



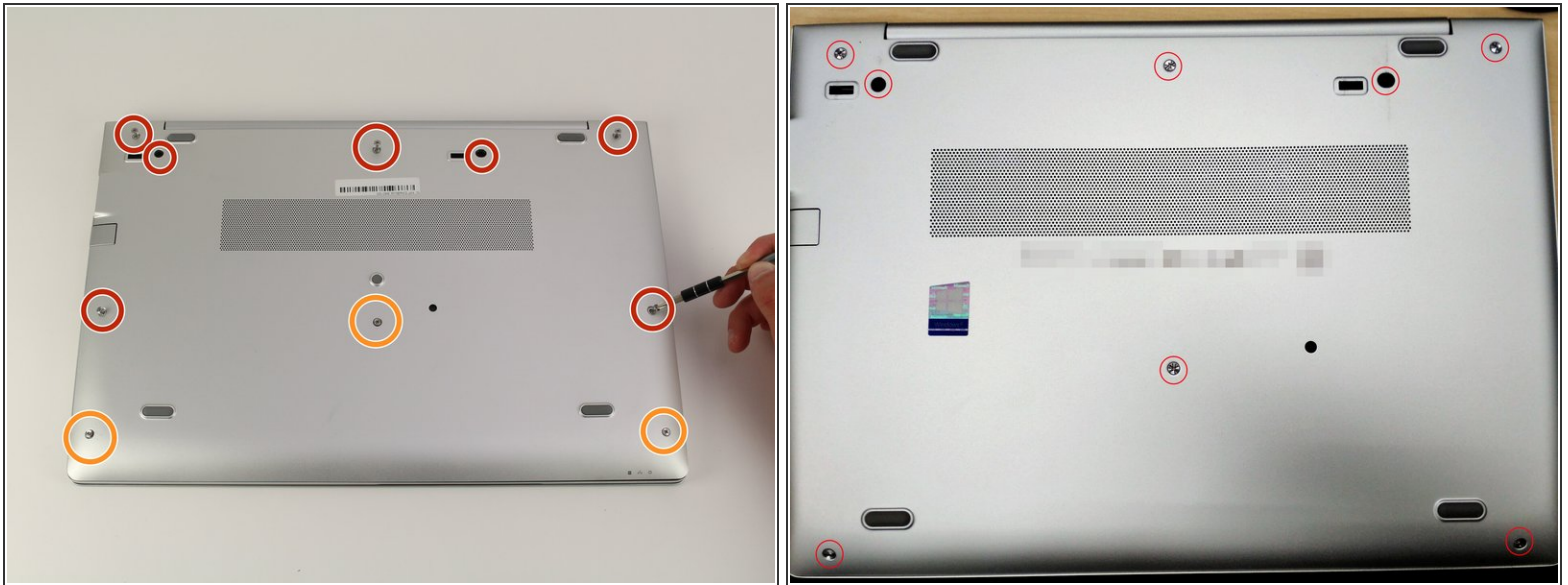
INTRODUCTION

The battery within a laptop is the most important component to having a functioning laptop. If you are experiencing a poor battery lifetime in your HP Elitebook 840 G5, then please follow the step-by-step replacement guide for the battery below. As this replacement requires the backing to be completely removed, use caution during the replacement as the electrical components inside of your laptop will be exposed. Also ensure to carefully remove any connecting wires by the heads-not the wires themselves. This will prevent any wires from breaking during the replacement.

TOOLS:

- [Phillips #1 Screwdriver](#) (1)
 - [iFixit Opening Tools](#) (1)
 - [T9 Torx Screwdriver](#) (1)
-


Step 1 — Back Cover



- Use a Phillips #1 screwdriver to undo the five screws. The top three screws are 10 mm and the two side screws are 7 mm.
- Unscrew the bottom three screws using the same screwdriver.
- ⓘ The bottom Phillips #1 screws don't remove from the back plate, but do need to be unscrewed.
- ⓘ Some models have a slightly different screw configuration, shown in the second photo.

Step 2



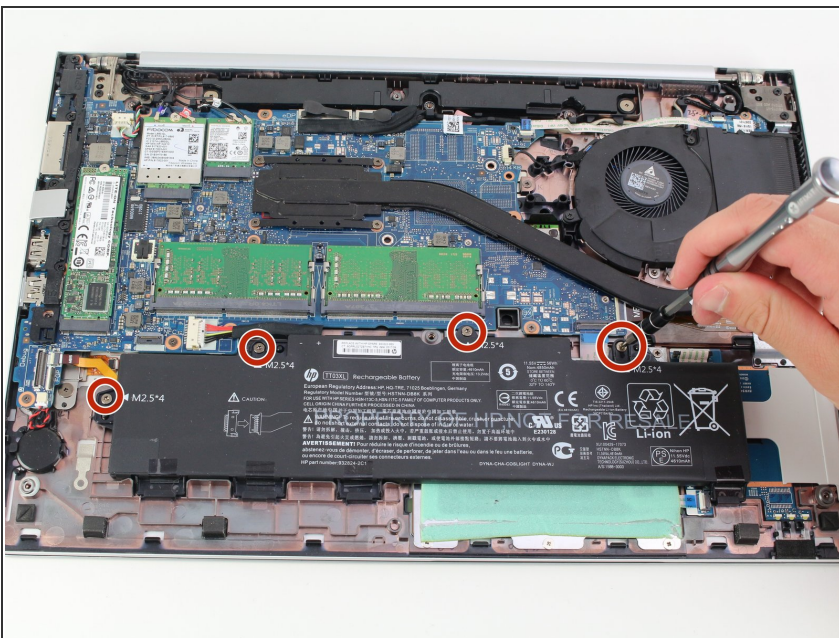
- Turn computer so that the hinged side is facing up.
 - Use the plastic opening tool to pry open the back plate.
 - Drag the plastic opening tool along the edge from left to right and use a second opening tool to pry open the top right corner.
 - Repeat the 3rd step for the other side.
 - Repeat on Left and Right sides of the system. There are two points in the middle (on the left and right sides of the center screw) that will release with slight lifting pressure.
-  You should be able to hear a pop when prying open the corners.

Step 3



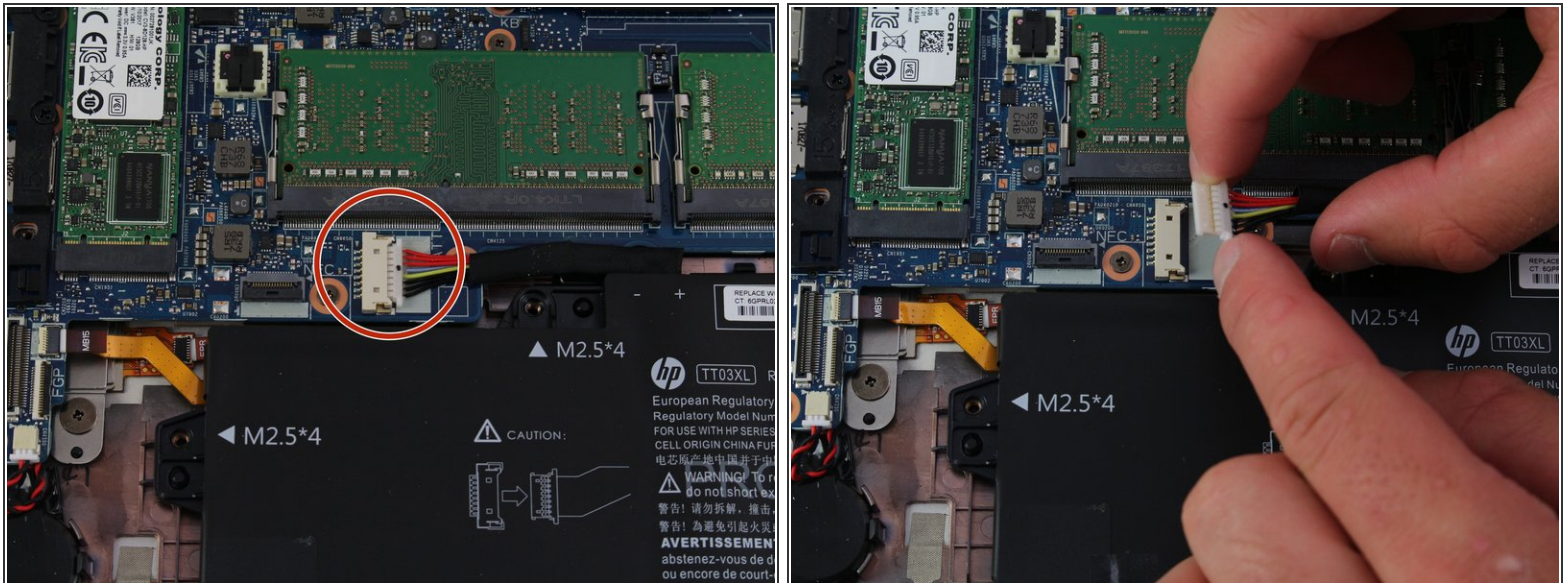
- Grab the back plate and separate it slowly away from the device.
- ⓘ No wiring is connected to the back plate. Separate with caution, as there are electric components on the inside.

Step 4 — Battery



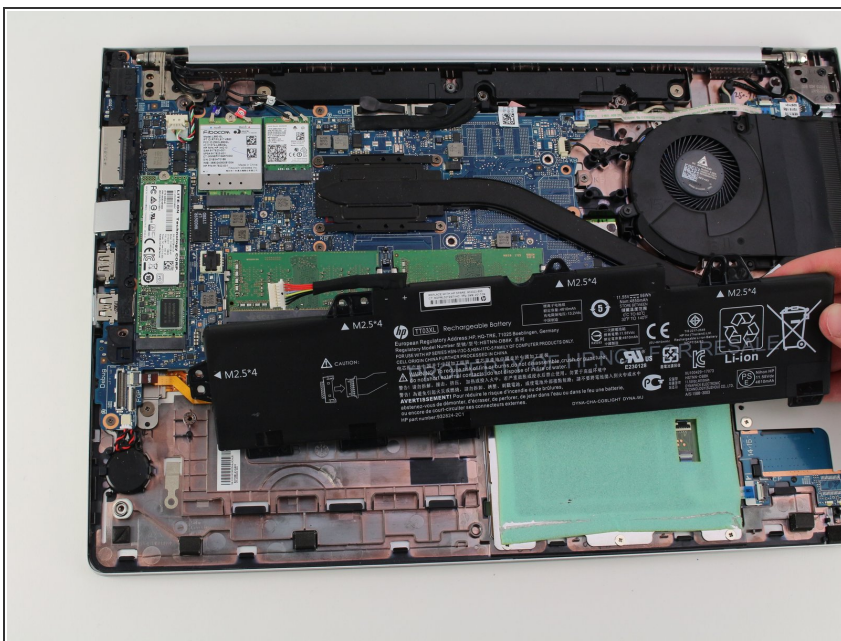
- Remove the 4mm screws that are fastened on the battery with your T9 Torx screwdriver.

Step 5



- Carefully remove the power supply connector by tugging it from the sides of its head.
- ❗ Make sure not to pull on the wires, as they could become damaged.

Step 6



- Slide the battery out and remove it from the device.

To reassemble your device, follow these instructions in reverse order.