



HP EliteBook 8440p LCD Replacement

Removing broken LCD, and replacing with a new one.

Written By: Eric D





TOOLS:

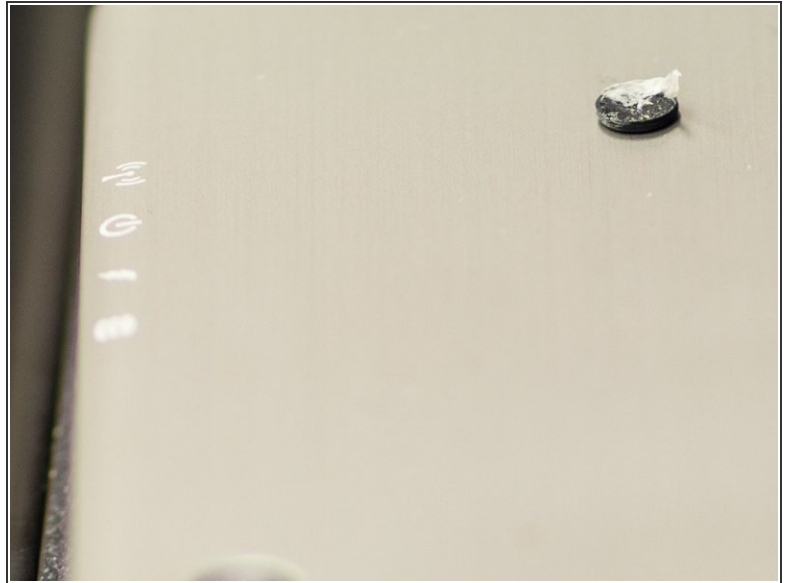
- [Phillips #0 Screwdriver](#) (1)
- [Spudger](#) (1)
- [T8 Torx Security Bit Screwdriver](#) (1)
- [Double-Sided Tape](#) (1)



PARTS:

- [Replacement HP LTN140KT02 LCD Screen](#) (1)

Step 1 — Remove rubber pads



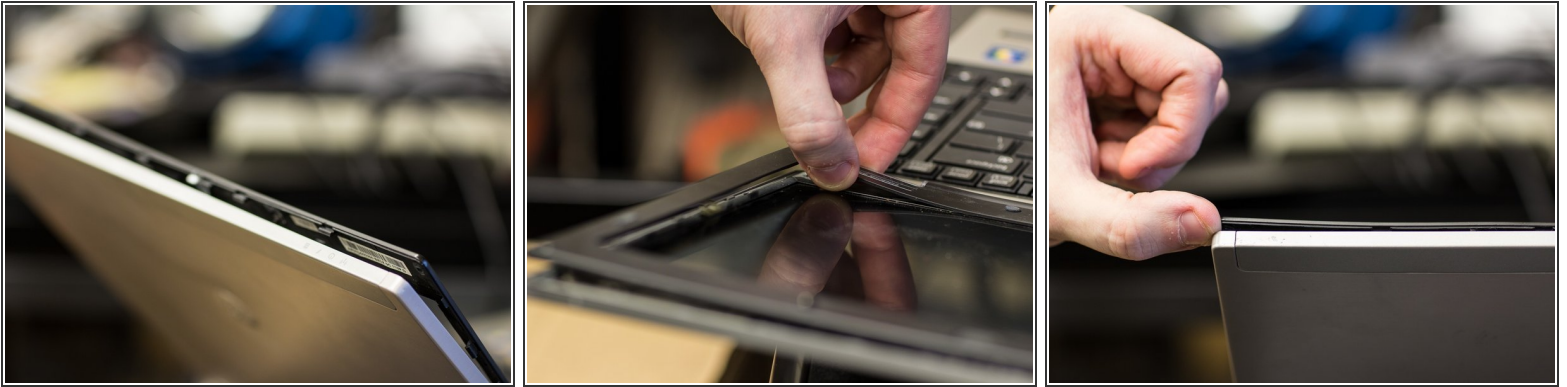
- Remove the ROUND rubber pads along the edge of the monitor. One in each corner. The center bottom ones do not cover screws.
- They are held on with a lite adhesive

Step 2 — Remove 4 T8 Screws



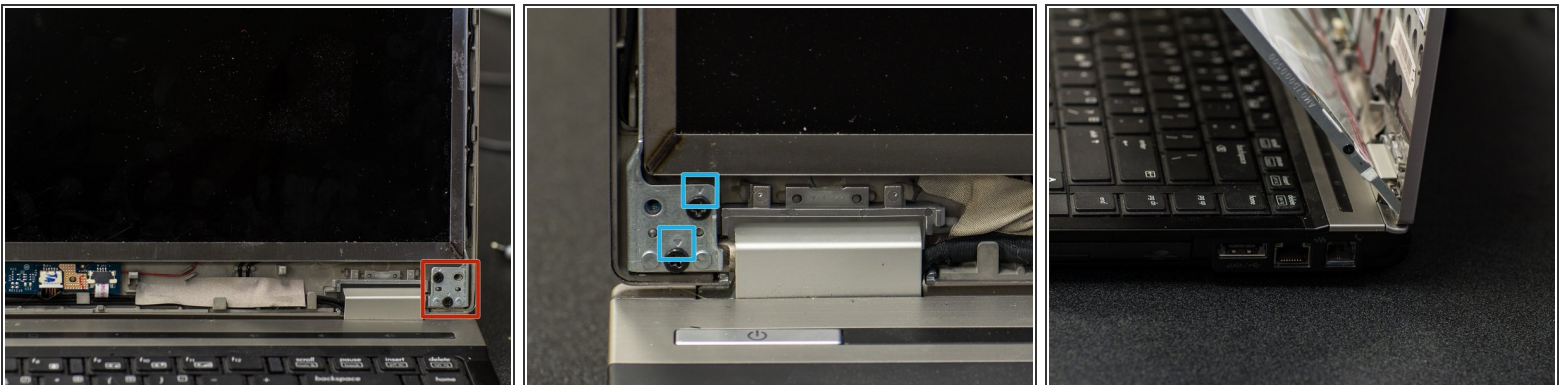
- Under the rubber pads are T8 screws.
- Remove the 4 of them. (One each corner)

Step 3 — Separate the face from the display



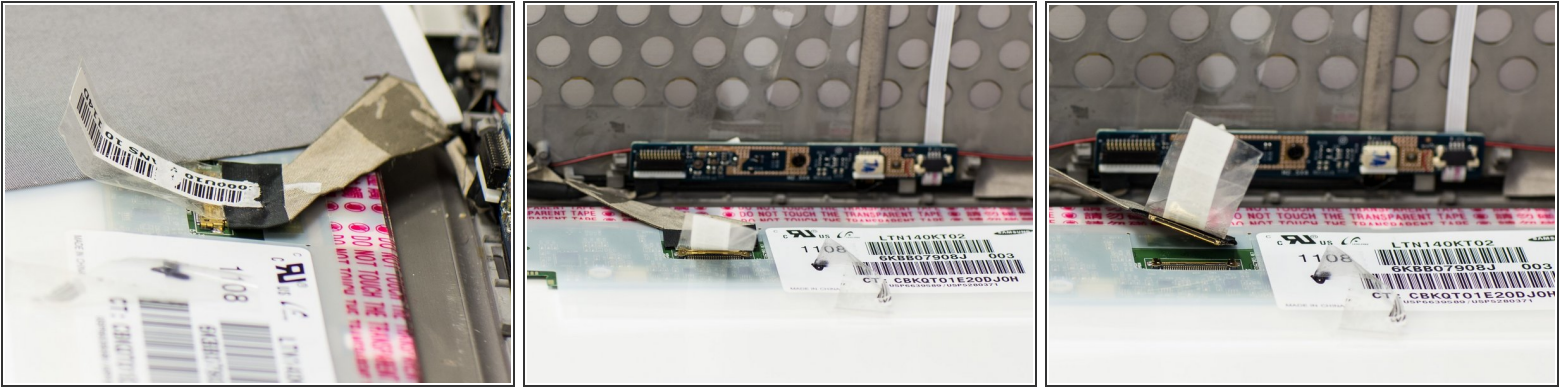
- At this point, the face is held on with little clips and adhesive. Go around the edge of the laptop screen gently prying the clips open.
- The adhesive is on the inner edge. Since I didn't care about the current screen, I also gripped the inner edge of the face, and pushed against the screen a little.

Step 4 — Separate the back cover from LCD



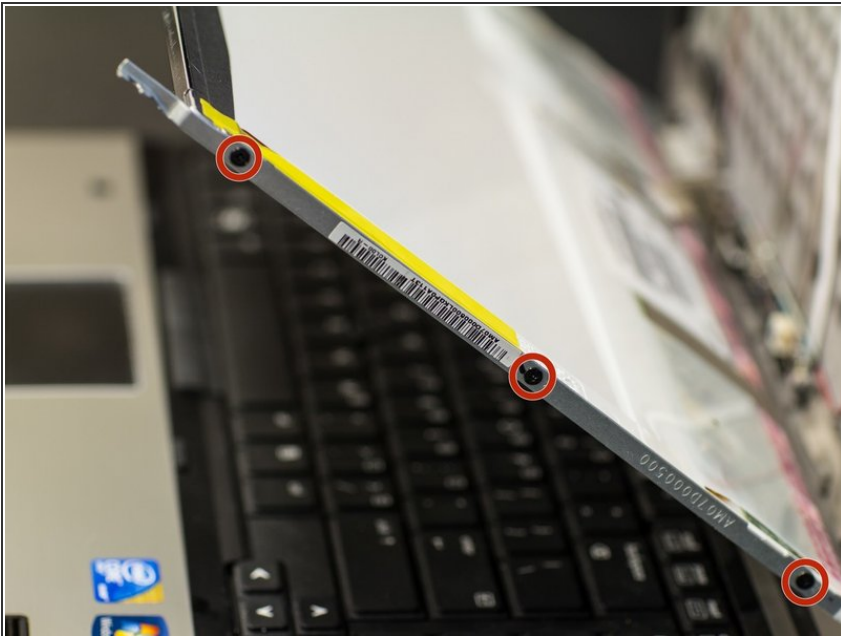
- Each lower corner of the screen has two PH0 screws. Remove them.
- Note that the two holes with screws have little triangle marks. This will make your reassembly easier when you try to remember which two holes to use.
- Lift the screen 45° of the laptop. The back should now be disconnected from the main frame of the display, and should be able to be pulled up to 90°.

Step 5 — Remove Data cable from back of LCD screen



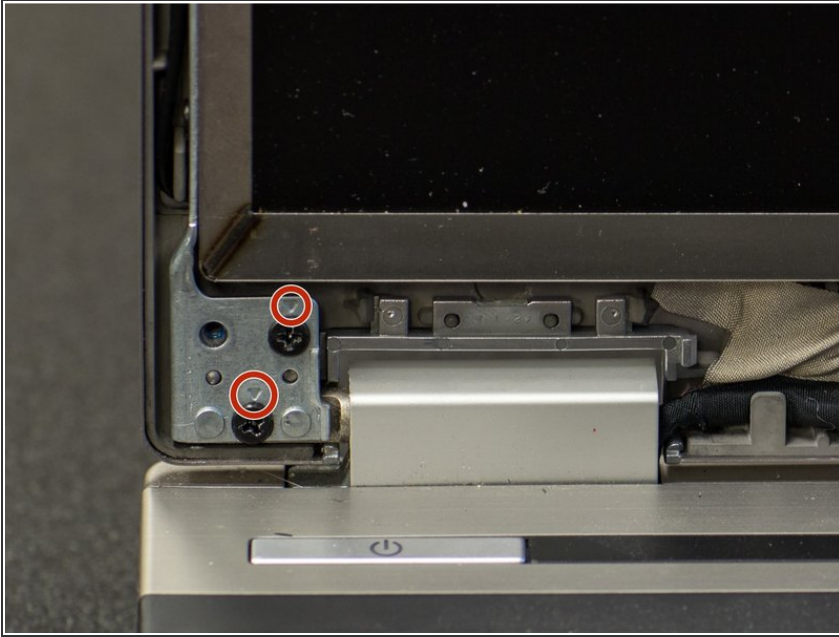
- On the back of the display, 4" (10cm) from the left side is a small data cable, unplug it.
- There is a piece of clear tape over the connector, and a barcode with a clear backing. Carefully remove this.

Step 6 — Separate the LCD from the frame



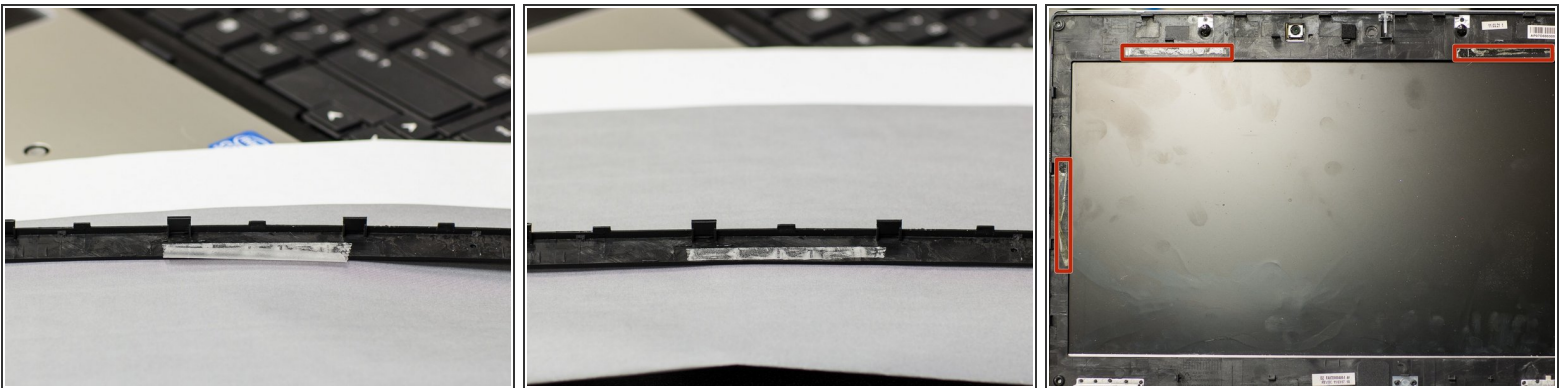
- Remove the three PH0 screws from each side of the LCD assembly.

Step 7 — Swap panel



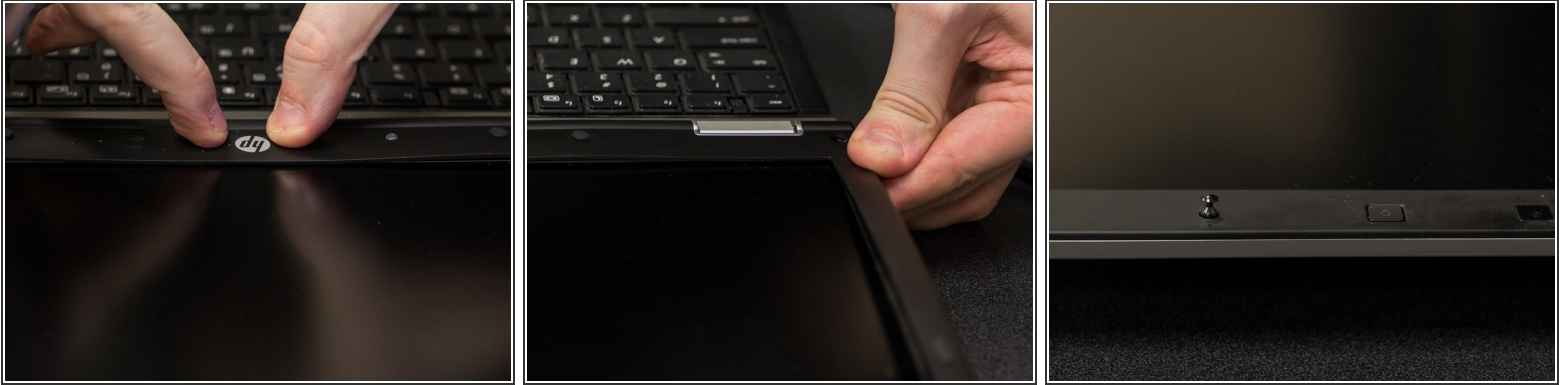
- At this point, the LCD is removed, and the new one can be attached.
- From this point forward in the instructions, you will need to pretty much work backwards.
- I made notes to make it a bit easier.
- Remember the little triangle markers when attaching the frame to the back.

Step 8 — Add new adhesive



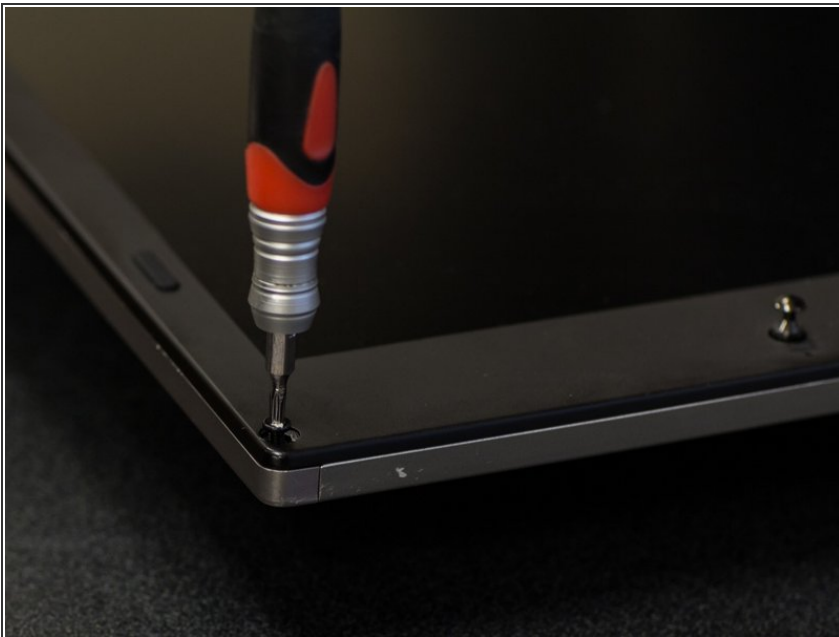
- Apply new adhesive to the back of the LCD face (otherwise there will be a little rattle).
 - I used standard double-sided tape.
 - I folded it lengthwise to thicken it, and trimmed with a razor.
- If you look closely, you will see light markings where the tape should be applied.
- (sorry about this last photo,iFixit makes the crop 4:3, which cuts off the image... Ill try to replace next time I replace one.)

Step 9 — Reattach Face



- To put the face back on, open the screen up all the way up.
- Place the face gently in place, use the light and knobs on the top to reference the placing.
- Start at the hp logo, and push down firmly, and slide out the the edges.
- Do each side separately, starting at the bottom, and working up.

Step 10 — Screw in face to LCD screen



- Screw in the four corner PH0 screws

Step 11 — Reattach rubber pads



- Reattach the four screw covers / rubber pads.
- You can use small pieces of double-stick tape.

To reassemble your device, follow these instructions in reverse order. Steps 8-11 are reassembly notes.