



HP EliteBook 850 G3 Display Assembly Replacement

This guide is to replace the Display Assembly in an HP EliteBook 850 G3.

Written By: Annabeth Grover



INTRODUCTION

If your HP EliteBook 850 G3 display assembly is malfunctioning use this guide to replace it. The display screen on your computer is the panel that is inside the device, which **displays** the image. If you are experiencing a blank screen on a powered computer or a gray flickering screen, be sure to first rule out troubleshooting options. Then Use this display assembly guide to repair a broken screen display. Before beginning, make sure to power off your laptop completely and disconnect from any external power source. Before using this guide, feel free to check out the [troubleshooting page](#) to see if any issues can be resolved without a replacement.



TOOLS:

- [Phillips #0 Screwdriver](#) (1)
 - [1 x Opening Picks](#) (1)
-

Step 1 — Battery



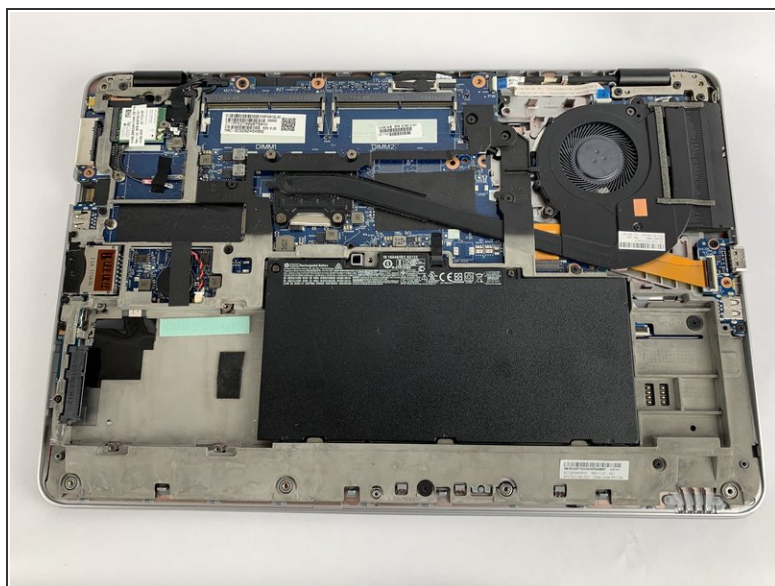
- ⚠ Turn off your laptop before starting
- Flip the laptop over so the model stickers face the ceiling.

Step 2



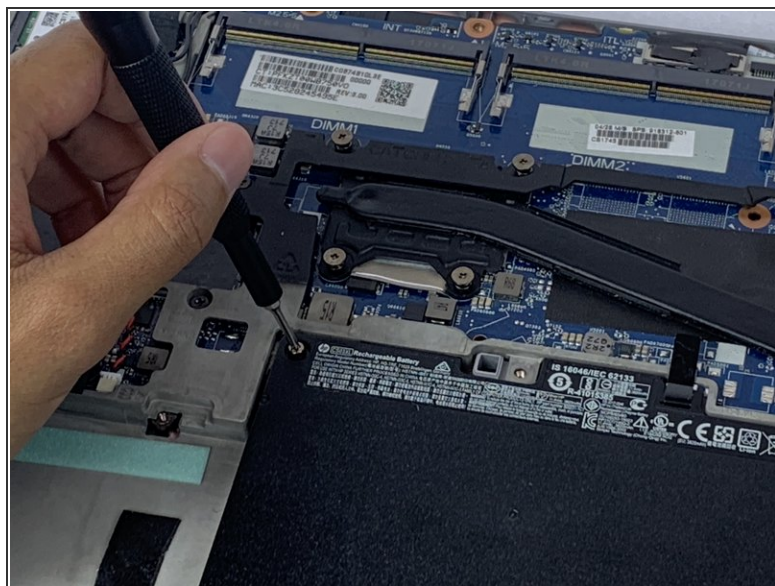
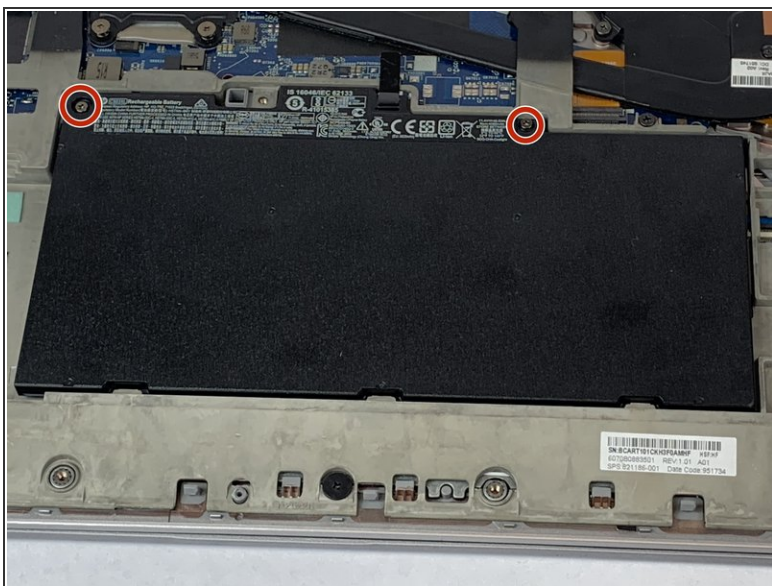
- Use a Phillips #0 screwdriver to remove eleven 5.7mm screws.

Step 3



- Insert the iFixit opening pick underneath the plastic back of the laptop. Use force to pry back off.

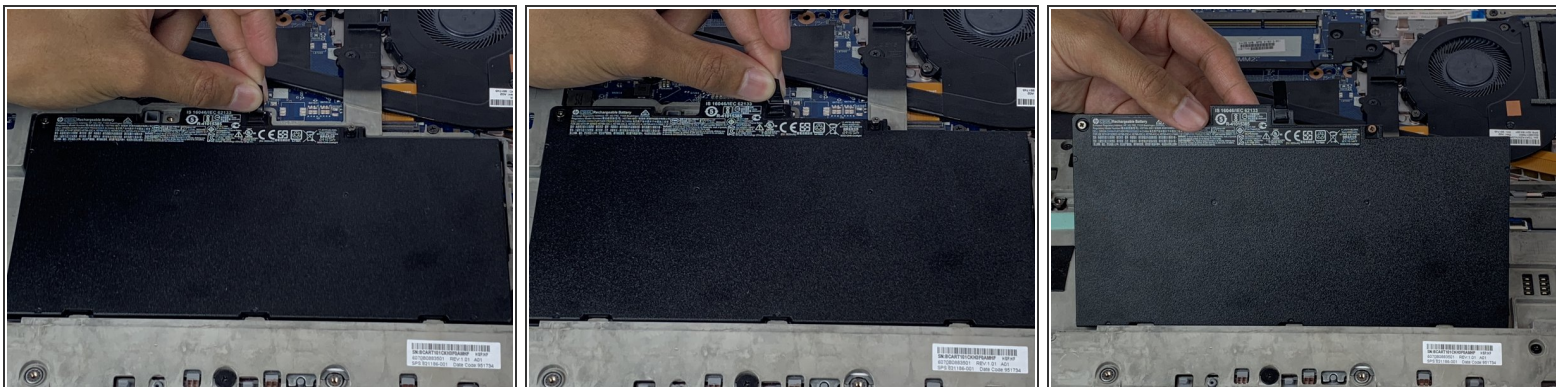
Step 4



- Use the Phillips #0 screwdriver to remove the two battery screws.

i The two battery screws are captured screws and do not come out.

Step 5



- Lift and pull the flap located at the top of the battery to remove it.

Step 6 — WiFi Card



⚠ Turn off your laptop before starting

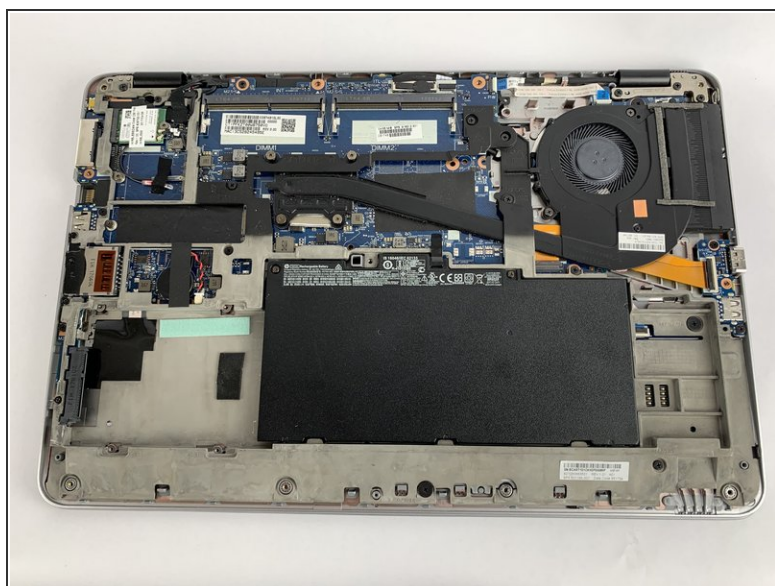
- Flip the laptop over so the model stickers face the ceiling.

Step 7



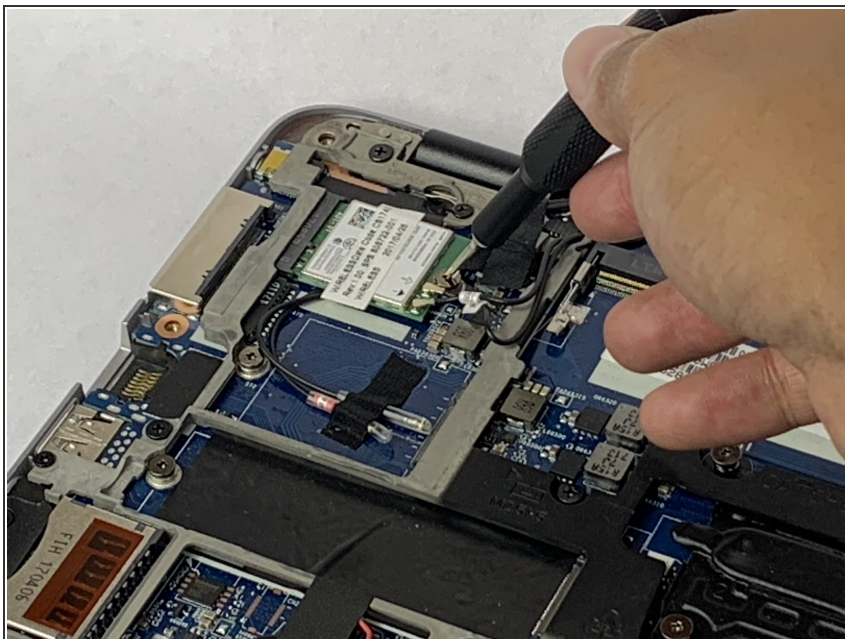
- Use a Phillips #0 screwdriver to remove eleven 5.7mm screws.

Step 8



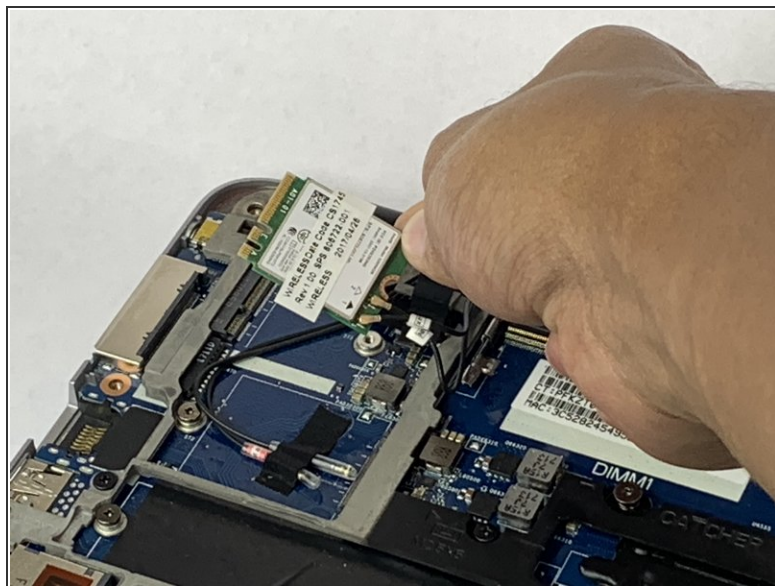
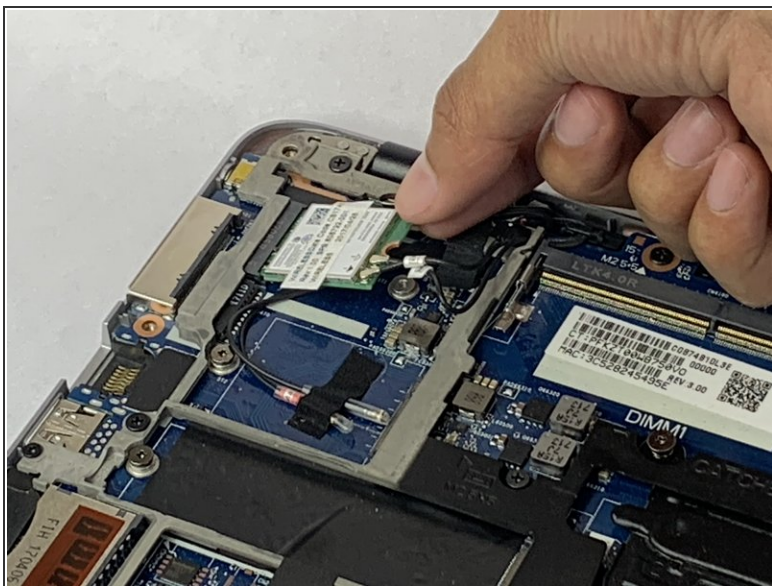
- Insert the iFixit opening pick underneath the plastic back of the laptop. Use force to pry back off.

Step 9



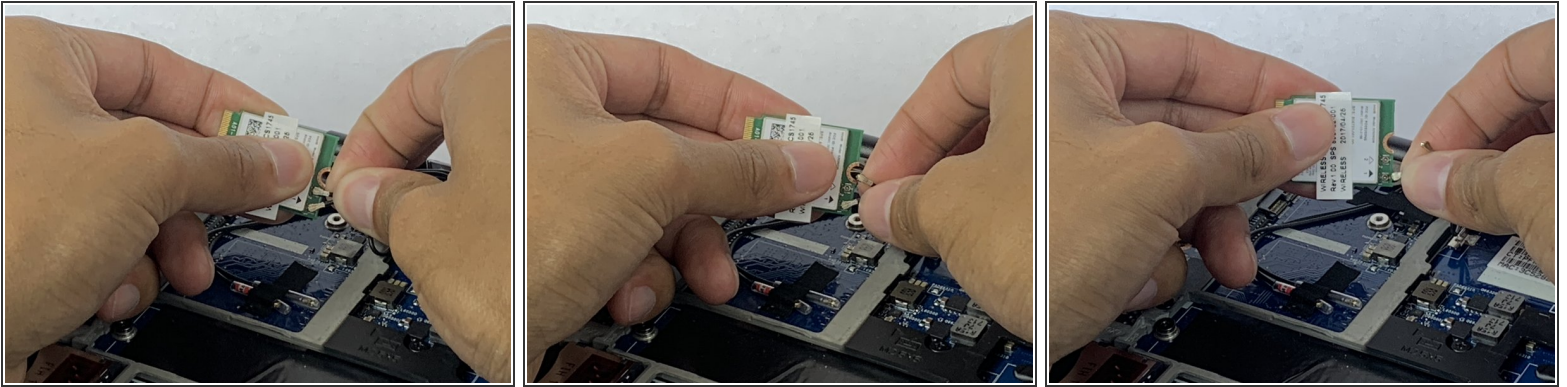
- Use the Phillips #0 screwdriver to remove the 3.3mm screw on the WiFi card.

Step 10



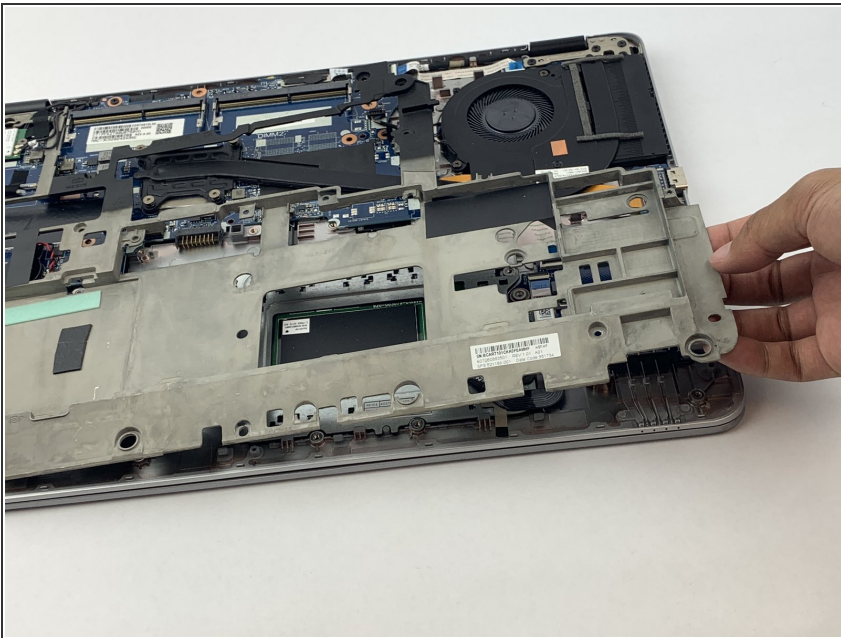
- Slide out the WiFi card.

Step 11



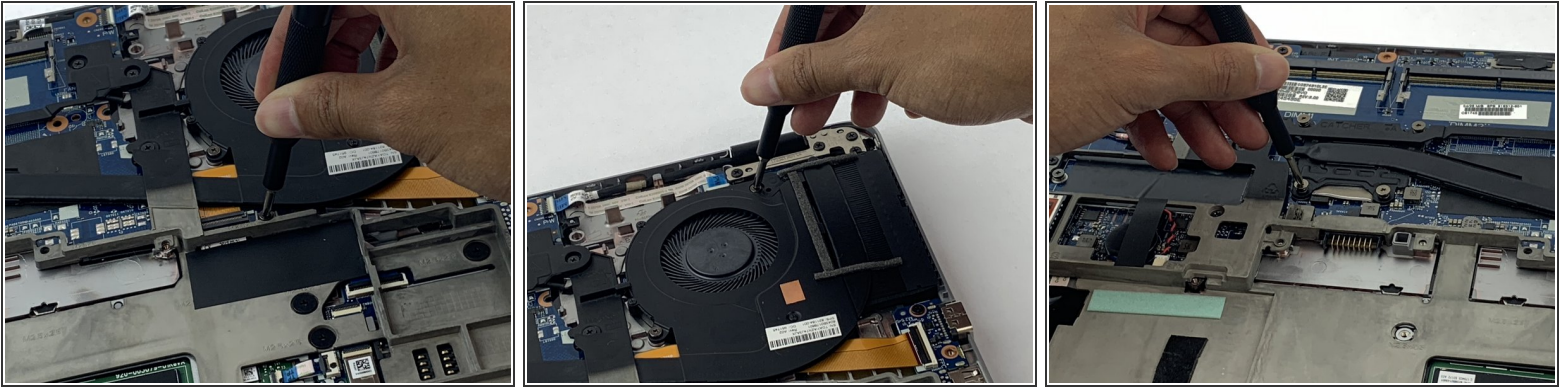
- Disconnect the coaxial cables wires from the WiFi card.

Step 12 — Fan



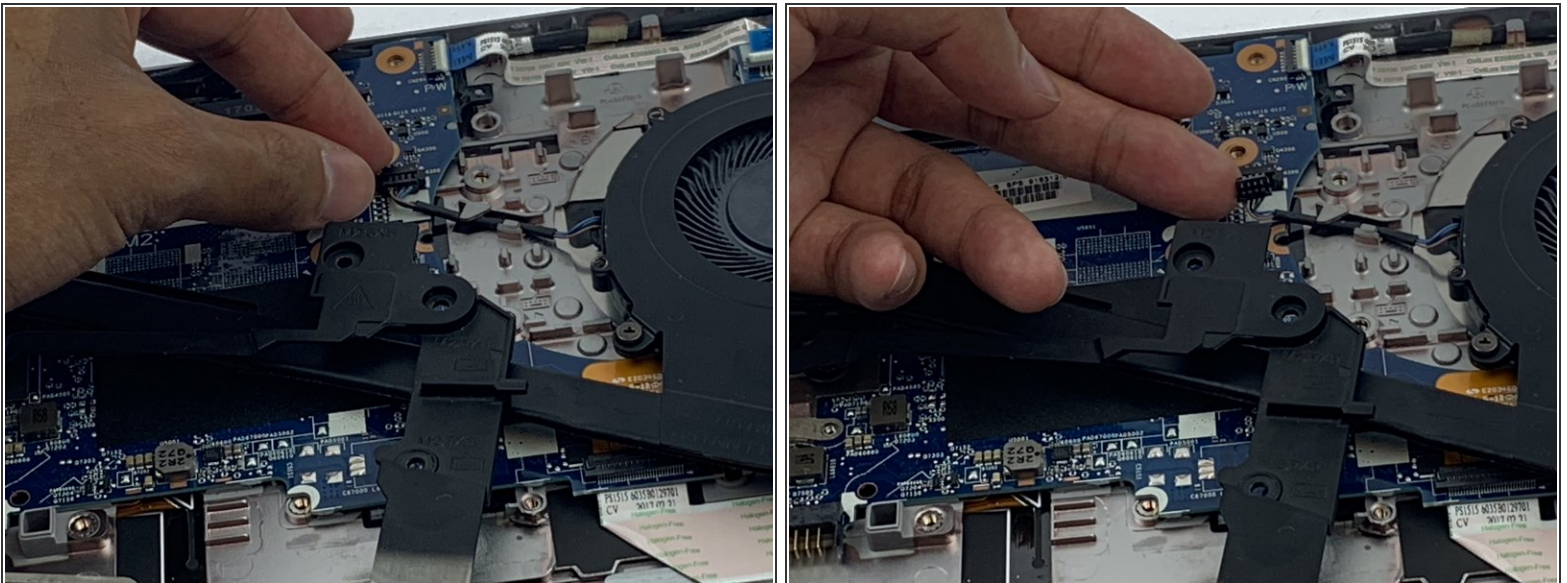
- Remove the plastic frame.

Step 13



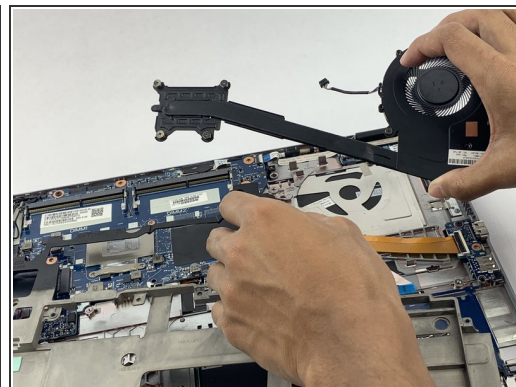
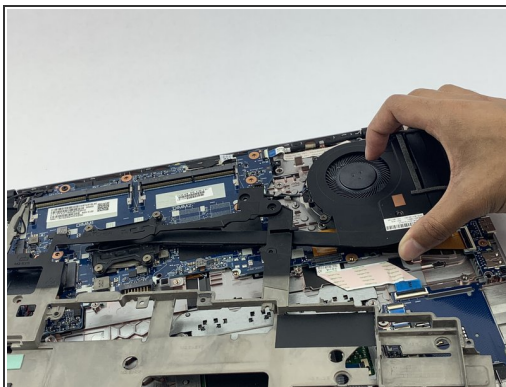
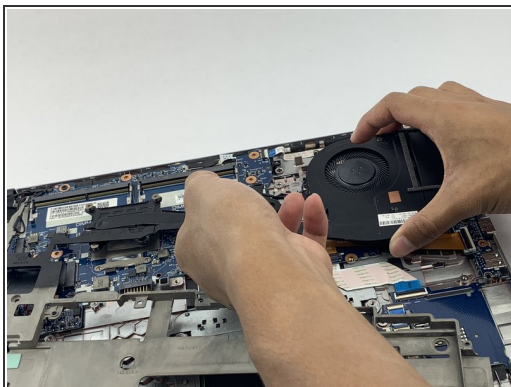
- Use the Phillips #0 screwdriver to unscrew the four captured screws at the end of the heat pipe.

Step 14



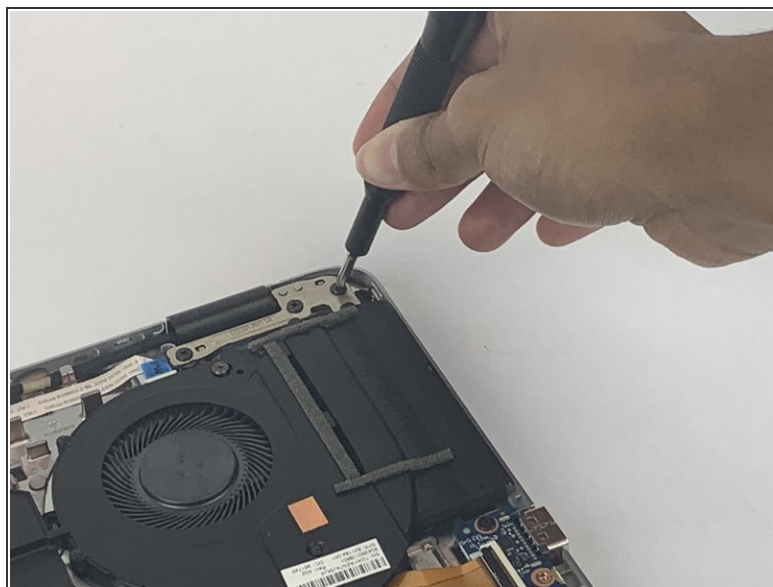
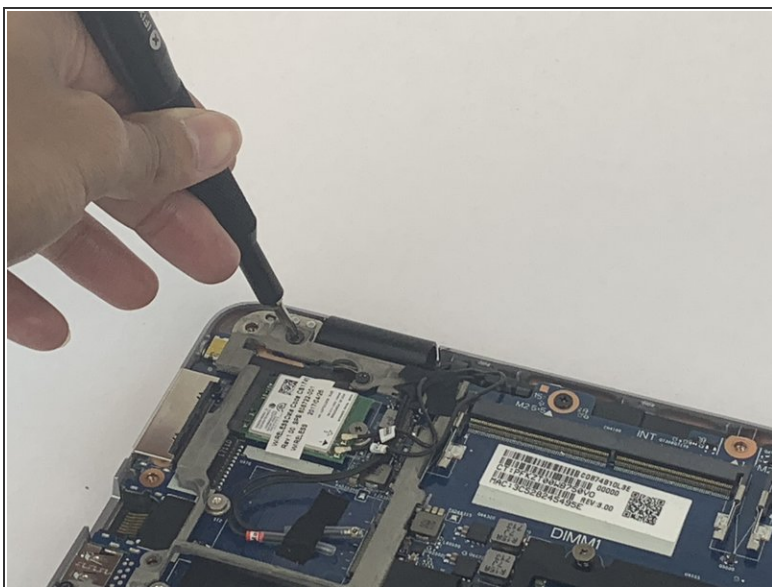
- Unplug the fan wires.

Step 15



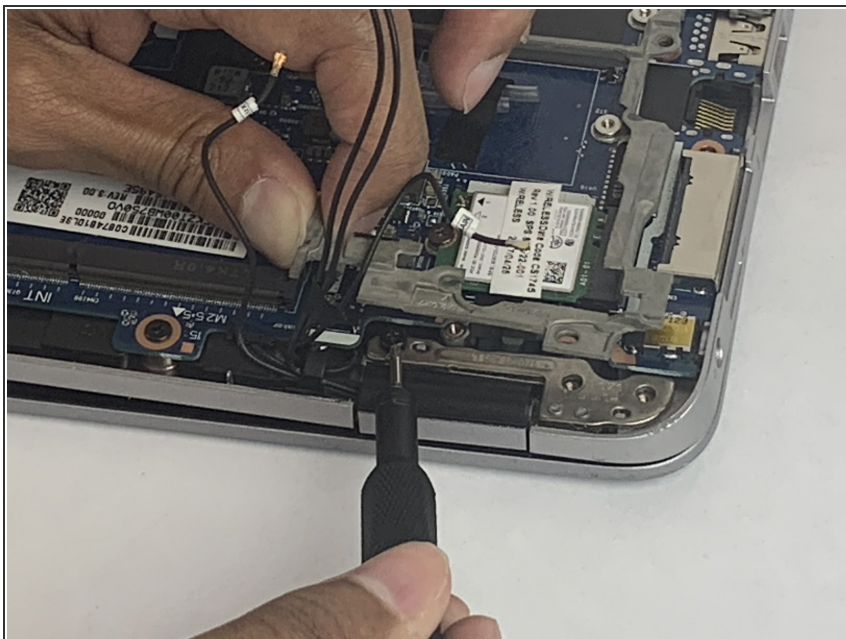
- Remove the fan.

Step 16 — Display Assembly



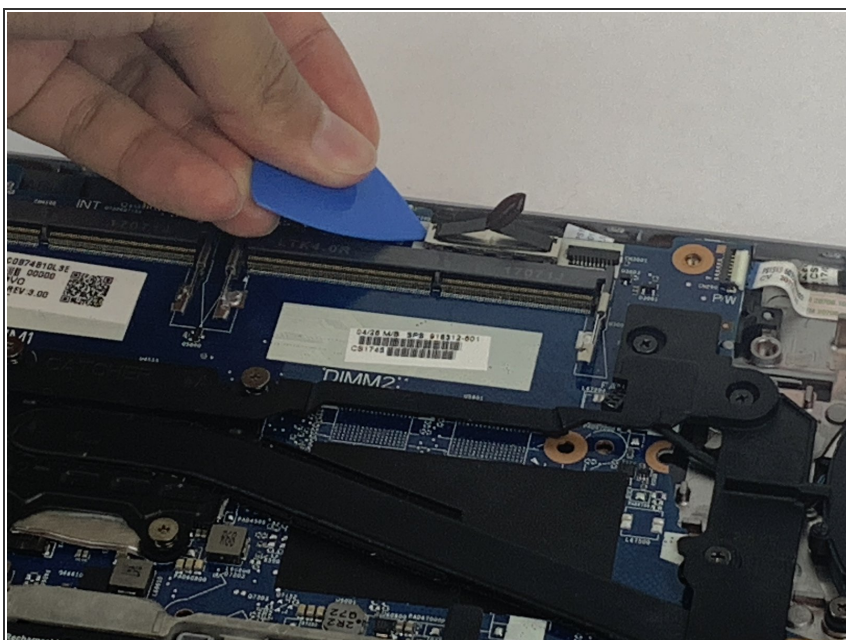
- Use the Phillips #0 screwdriver to remove the 7.7mm screw and six 5.8 mm screws from the corners inside the laptop.

Step 17



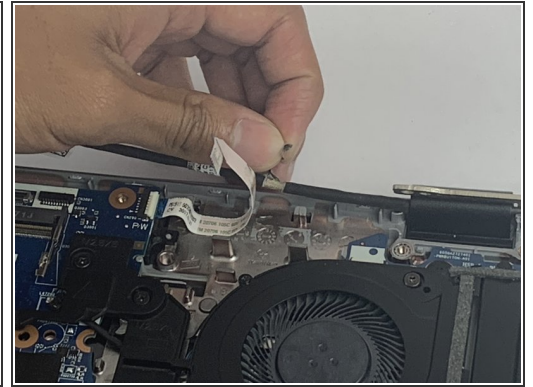
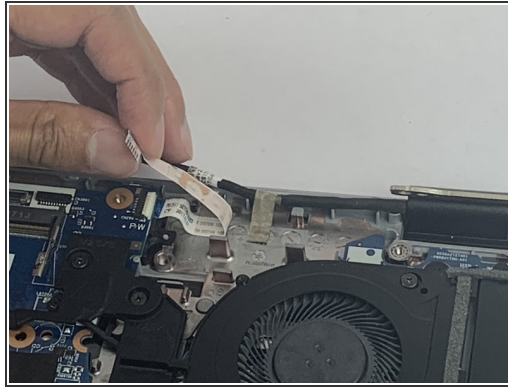
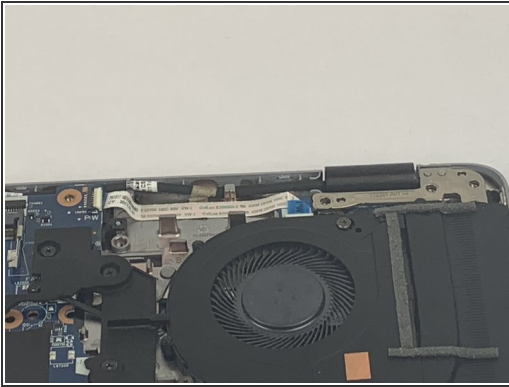
- Use the Phillips #0 screwdriver to remove the 5.7 mm screw under the plastic frame.

Step 18




- Use the opening pick to unplug the cable with the black tab on top.

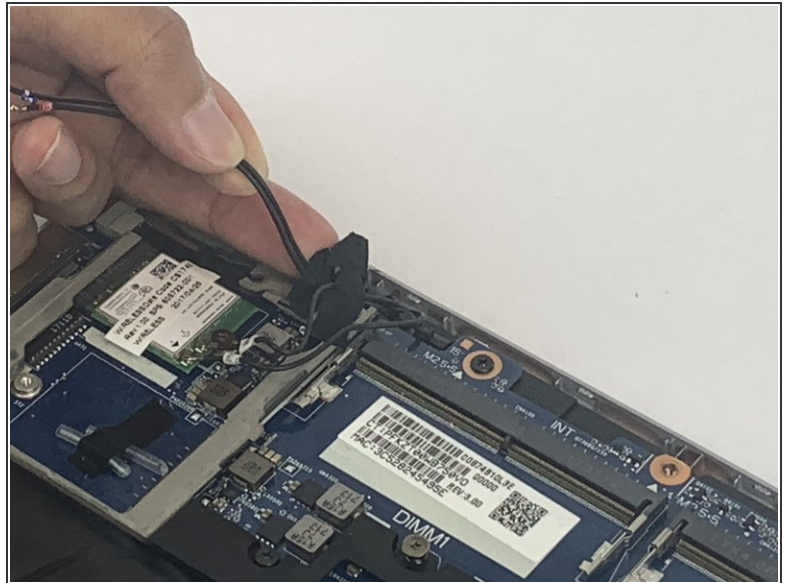
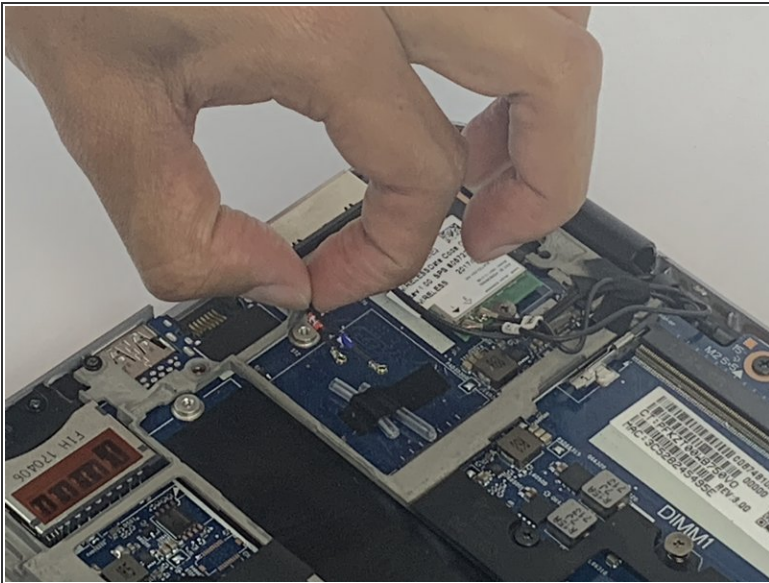
Step 19




- Disconnect wire over gold tape and remove tape. You will have to peel the wire up to get to the tape.

 The tape is not reusable.

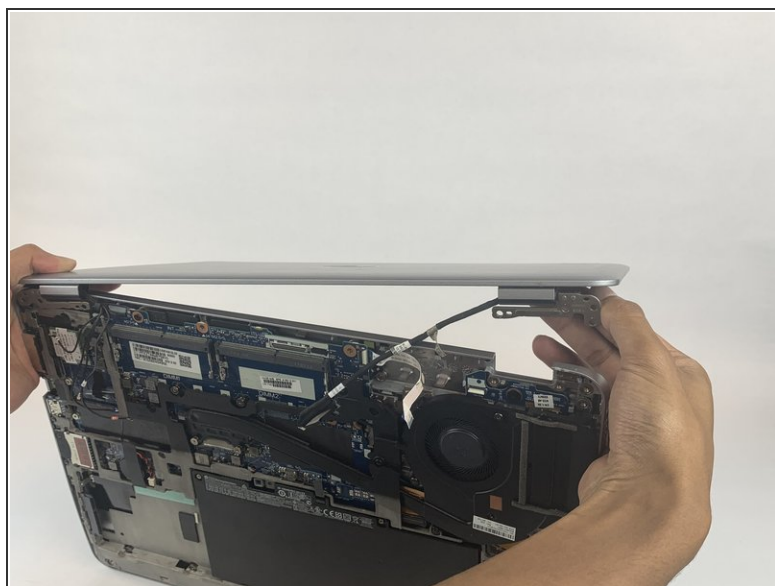
Step 20



- Remove the coaxial cables from the wifi card and from clear plastic holds. Remove the black tape and slip out from black clip.

 This tape is not reusable.

Step 21



- Open the top of the laptop and bend the hinges so that the metal bits in the corners will come up.

Step 22



- Take the display assembly off.

To reassemble your device, follow these instructions in reverse order.