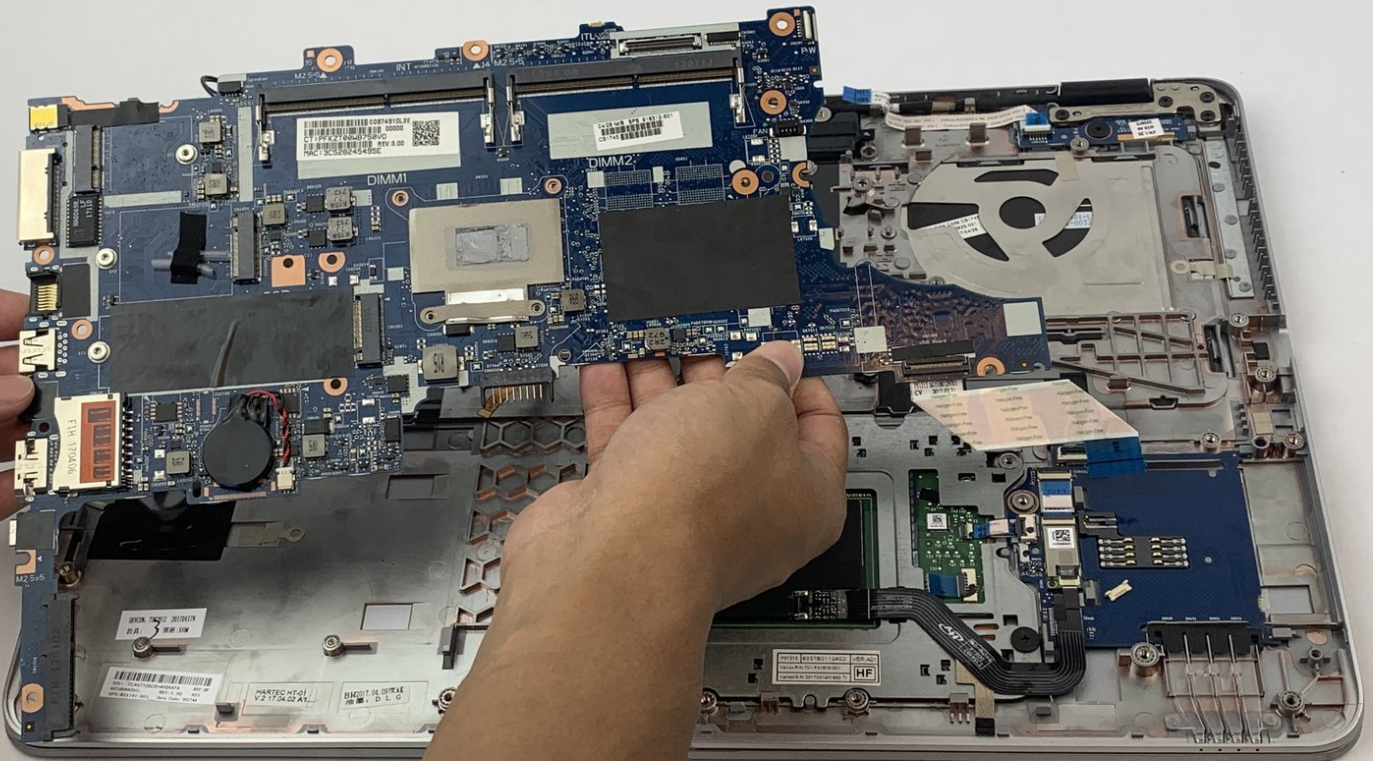




# HP EliteBook 850 G3 Motherboard Replacement

How to replace the motherboard in an HP EliteBook 850 G3.

Written By: Annabeth Grover



## INTRODUCTION

If your HP EliteBook 850 G3 is running slower than normal, use this guide to complete a Motherboard Replacement on your device. The Motherboard itself is a printed circuit board that allows the CPU, RAM, and all other computer hardware components to communicate with each other. When it is faulty it may cause the computer to slow down. A computer can also be slow because of issues like RAM usage limits so be sure to troubleshoot all symptoms before replacing the motherboard. Before beginning, make sure to power off your laptop completely and disconnect from any external power source. Before using this guide, feel free to check out the [troubleshooting page](#) to see if any issues can be resolved without a replacement.



### TOOLS:

- [Phillips #0 Screwdriver](#) (1)
  - [1 x Opening Picks](#) (1)
  - [Phillips #00 Screwdriver](#) (1)
-

## Step 1 — WiFi Card



- ⚠ Turn off your laptop before starting
- Flip the laptop over so the model stickers face the ceiling.

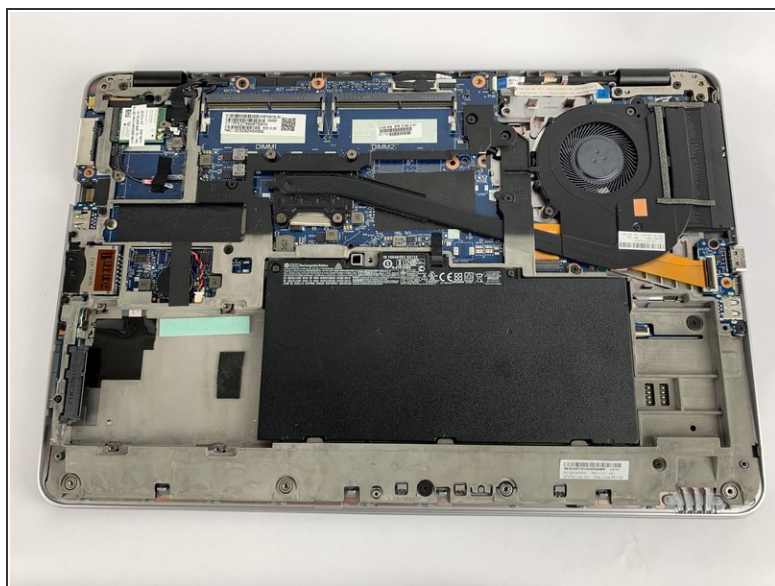
## Step 2



- Use a Phillips #0 screwdriver to remove eleven 5.7mm screws.

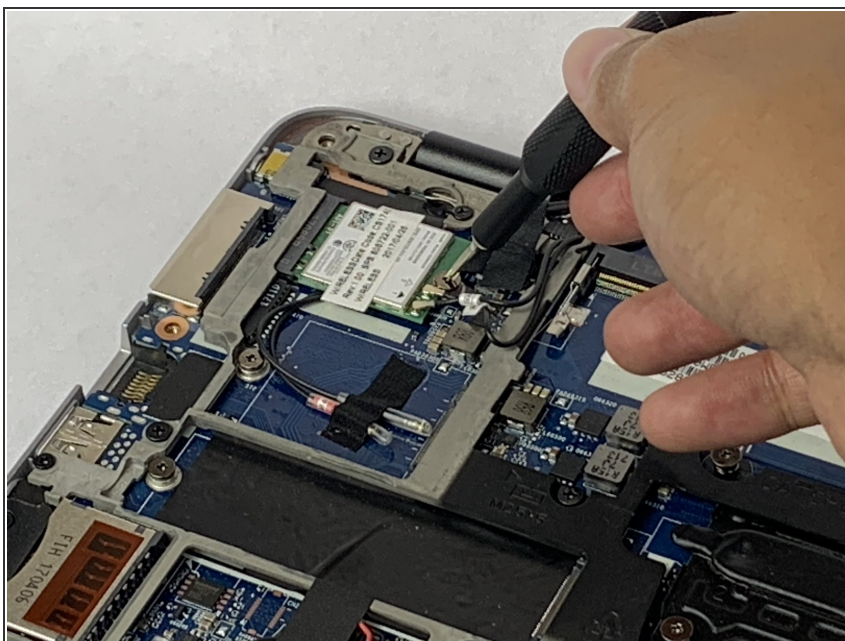


## Step 3



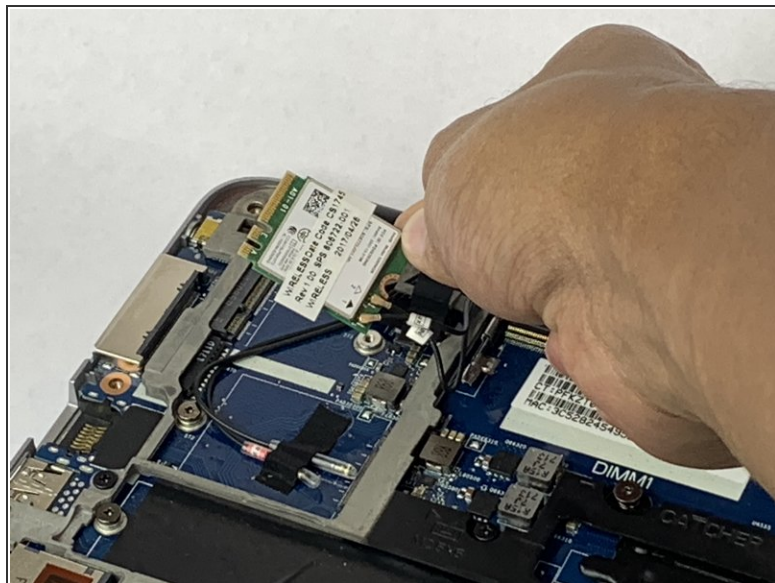
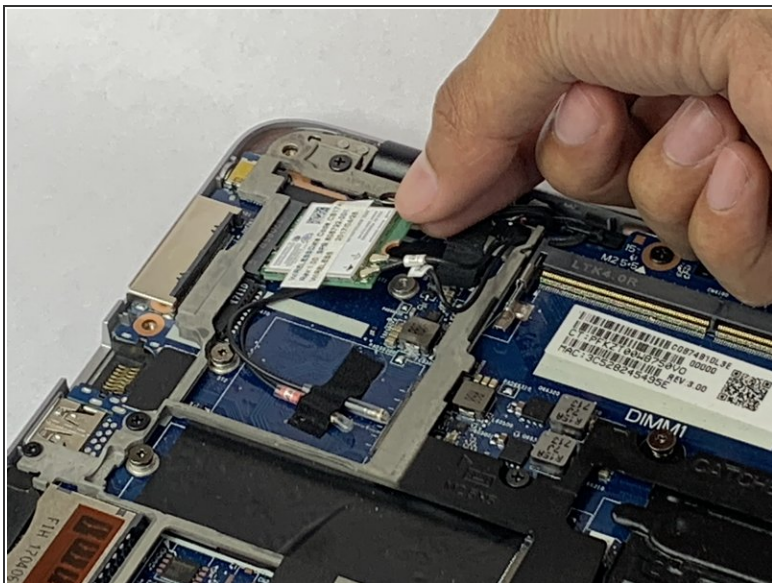
- Insert the iFixit opening pick underneath the plastic back of the laptop. Use force to pry back off.

## Step 4



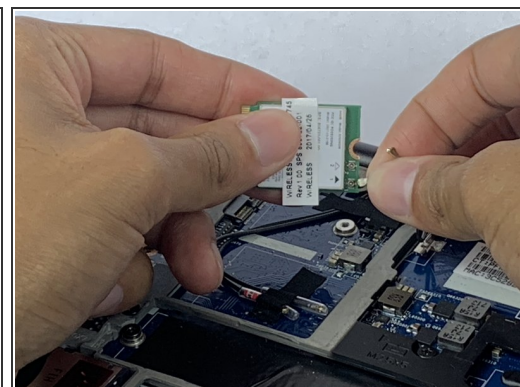
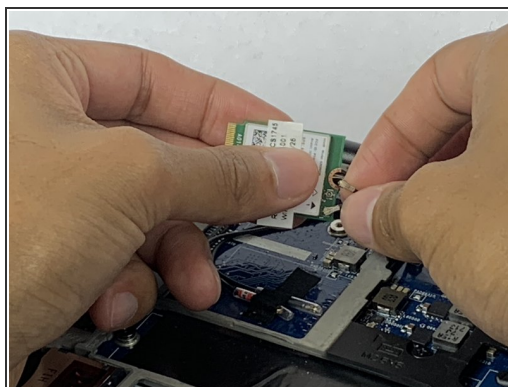
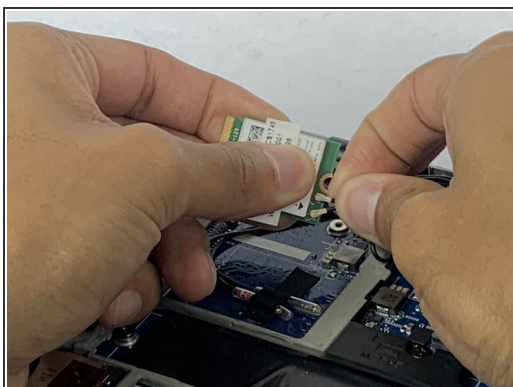
- Use the Phillips #0 screwdriver to remove the 3.3mm screw on the WiFi card.

## Step 5



- Slide out the WiFi card.

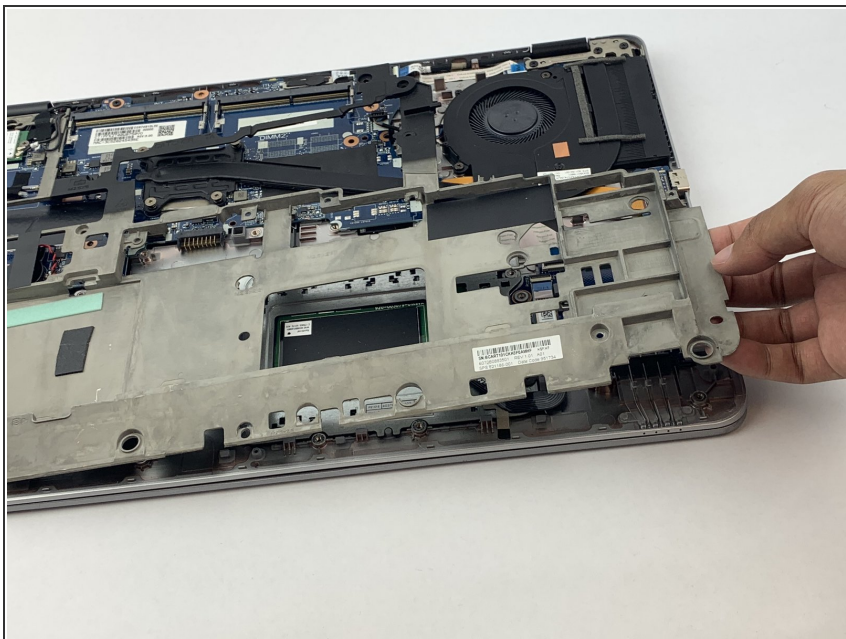
## Step 6



- Disconnect the coaxial cables wires from the WiFi card.

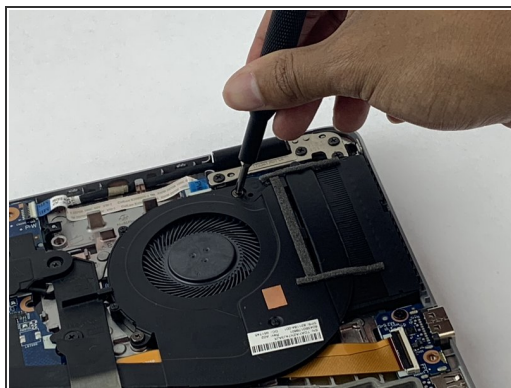


## Step 7 — Fan



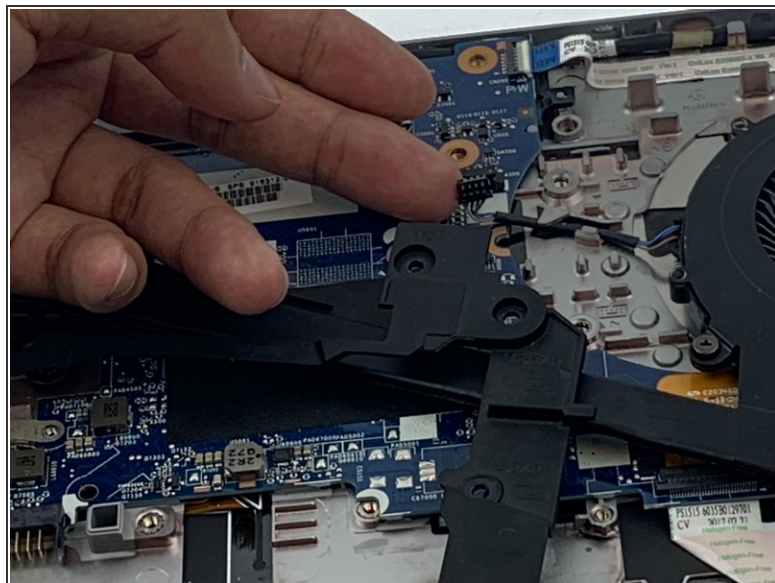
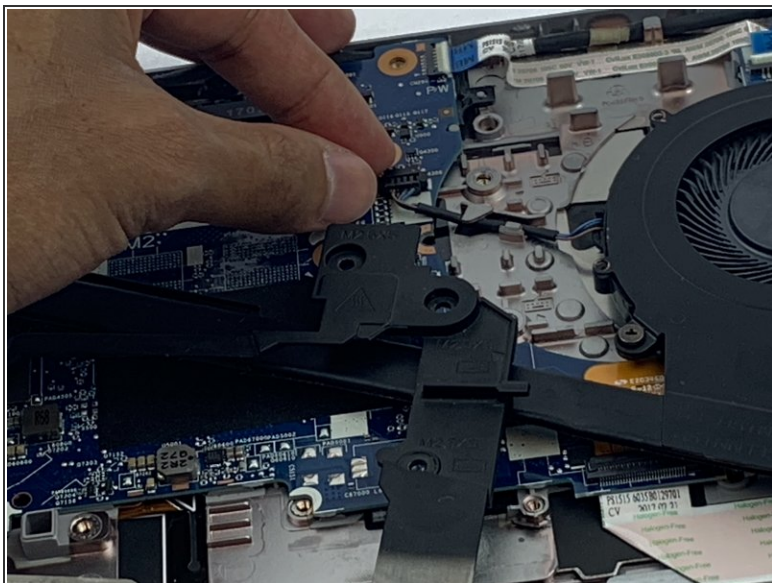
- Remove the plastic frame.

## Step 8



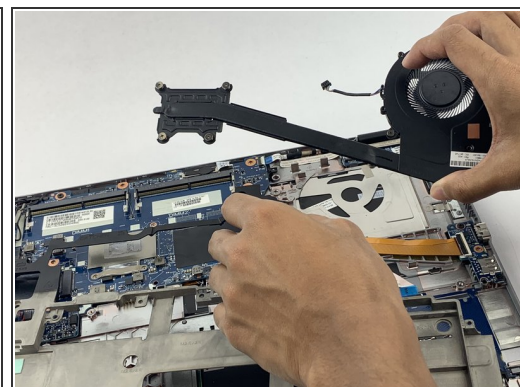
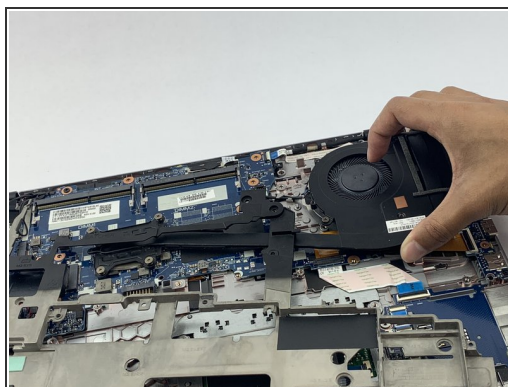
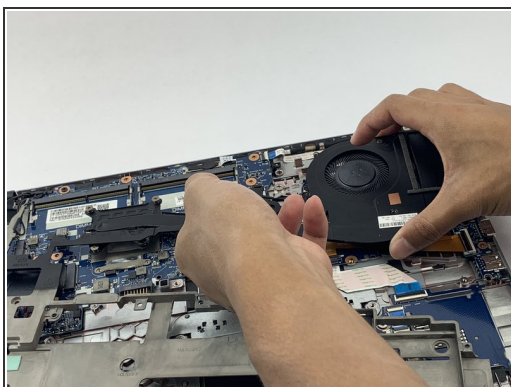
- Use the Phillips #0 screwdriver to unscrew the four captured screws at the end of the heat pipe.

## Step 9



- Unplug the fan wires.

## Step 10



- Remove the fan.

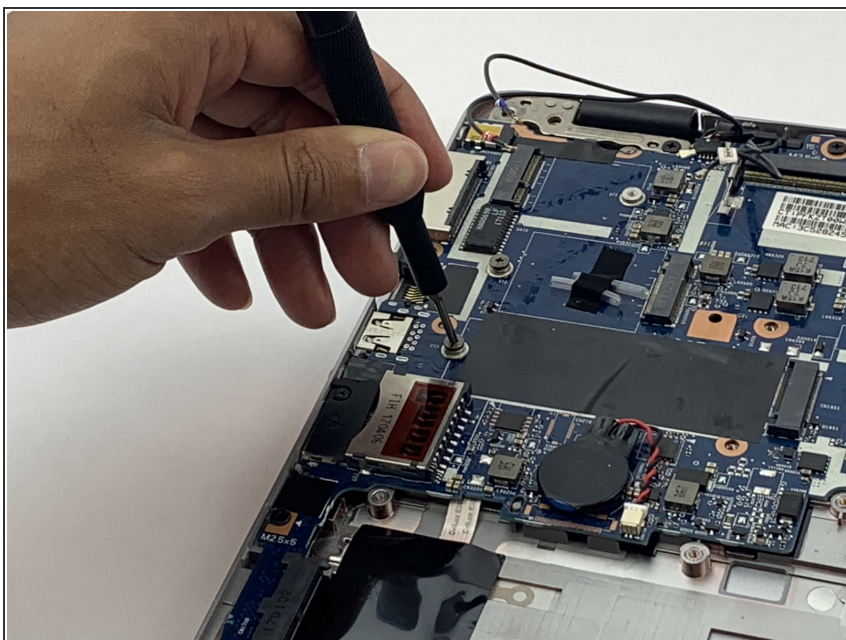


## Step 11 — Motherboard



- Slide out RAM (not pictured).

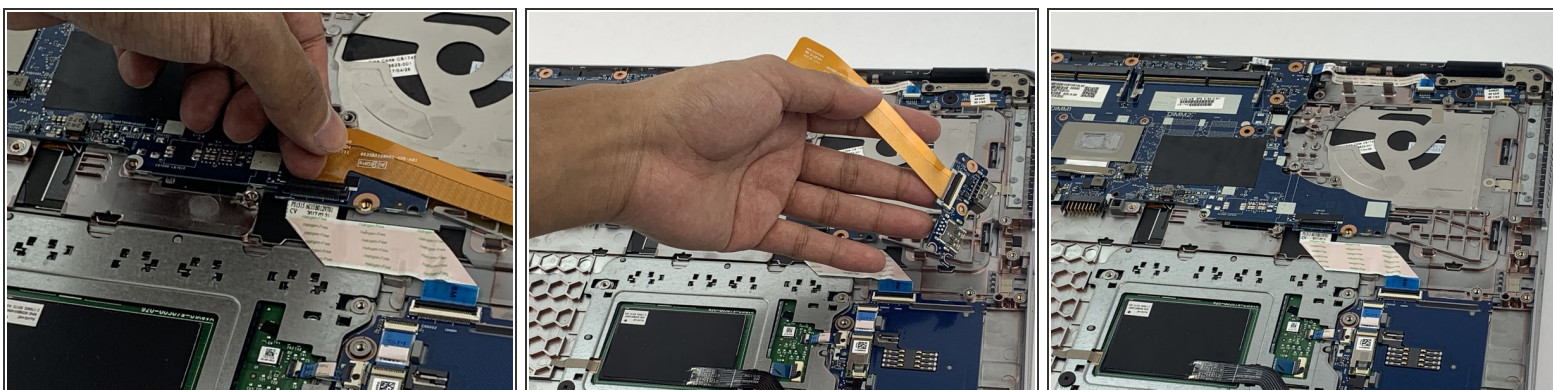
## Step 12



- Use a #00 Phillips screwdriver to remove twelve 5.7 mm screws from the motherboard.

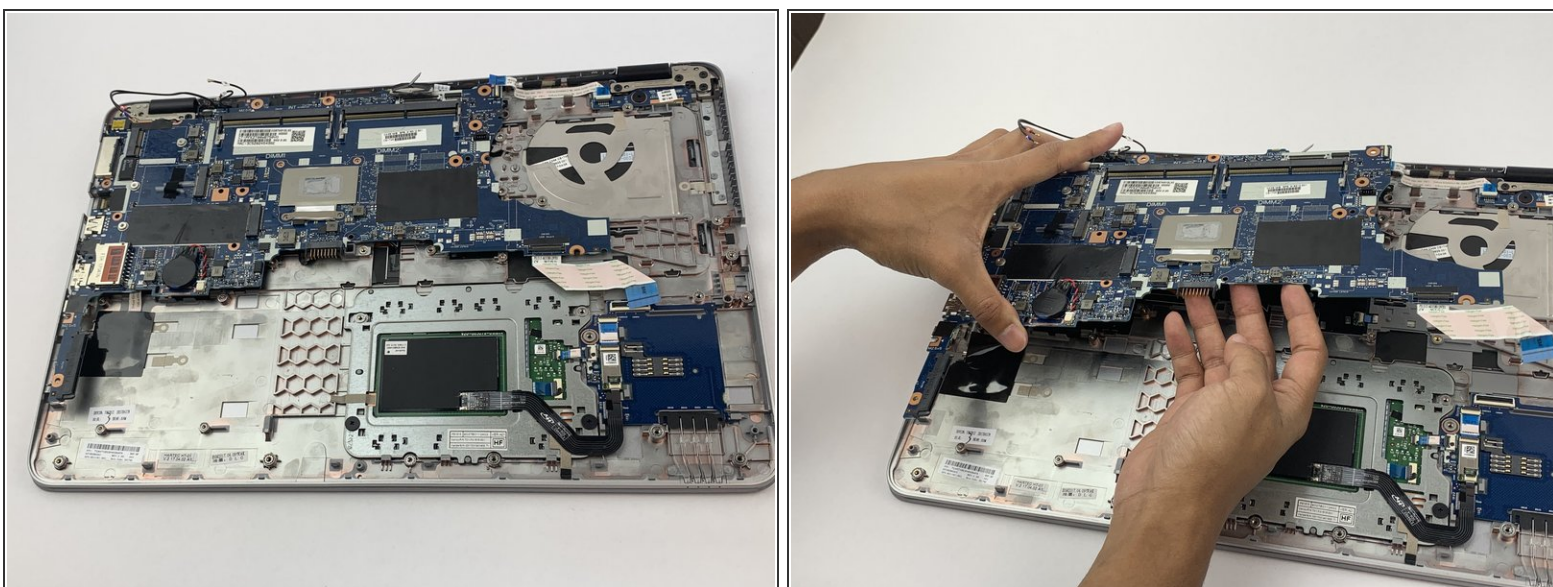


## Step 13



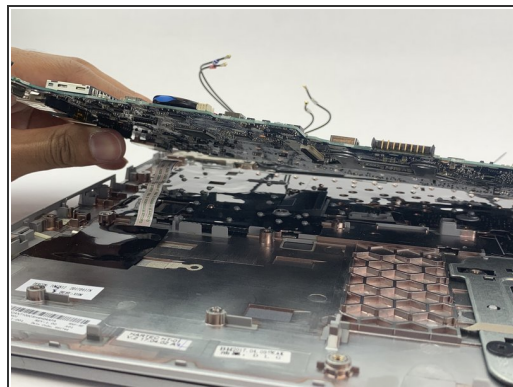
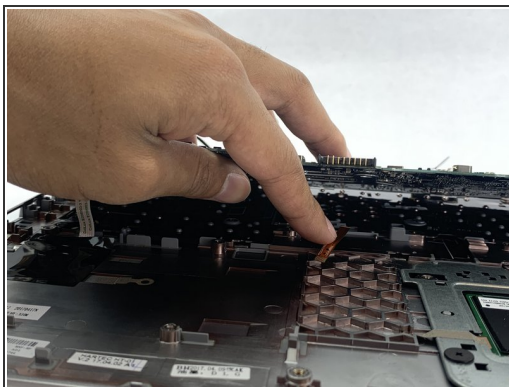
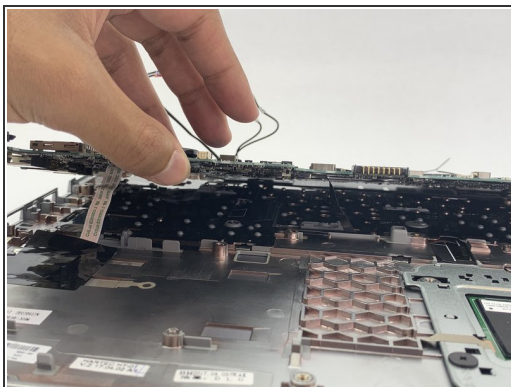
- Remove the wire connectors.

## Step 14



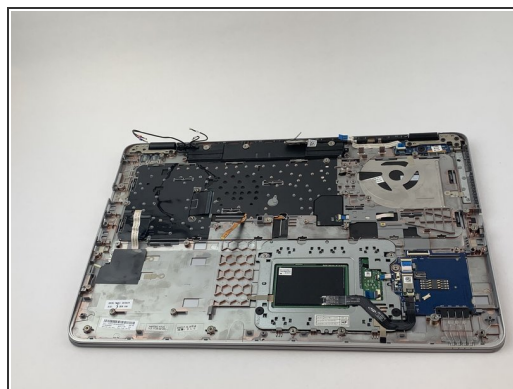
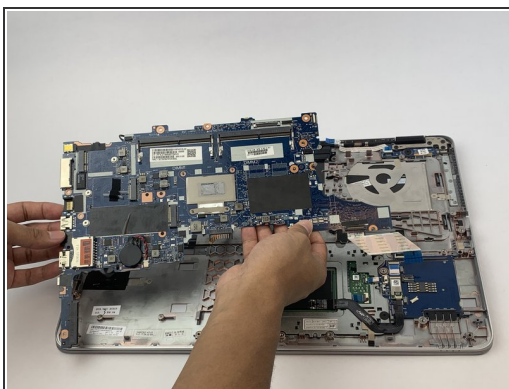
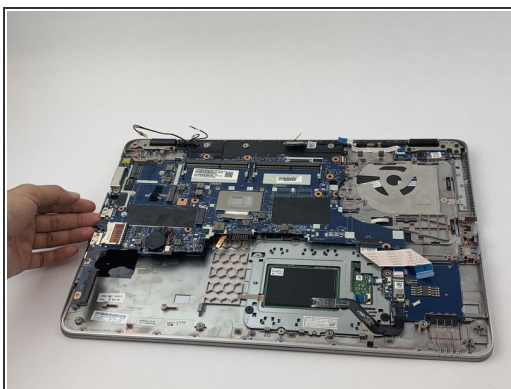
- Jiggle the motherboard until the ports (ie. headphone jack) come out from the sides and you can lift it up.

## Step 15



- Disconnect the wires underneath.

## Step 16



- Take out the motherboard.

To reassemble your device, follow these instructions in reverse order.