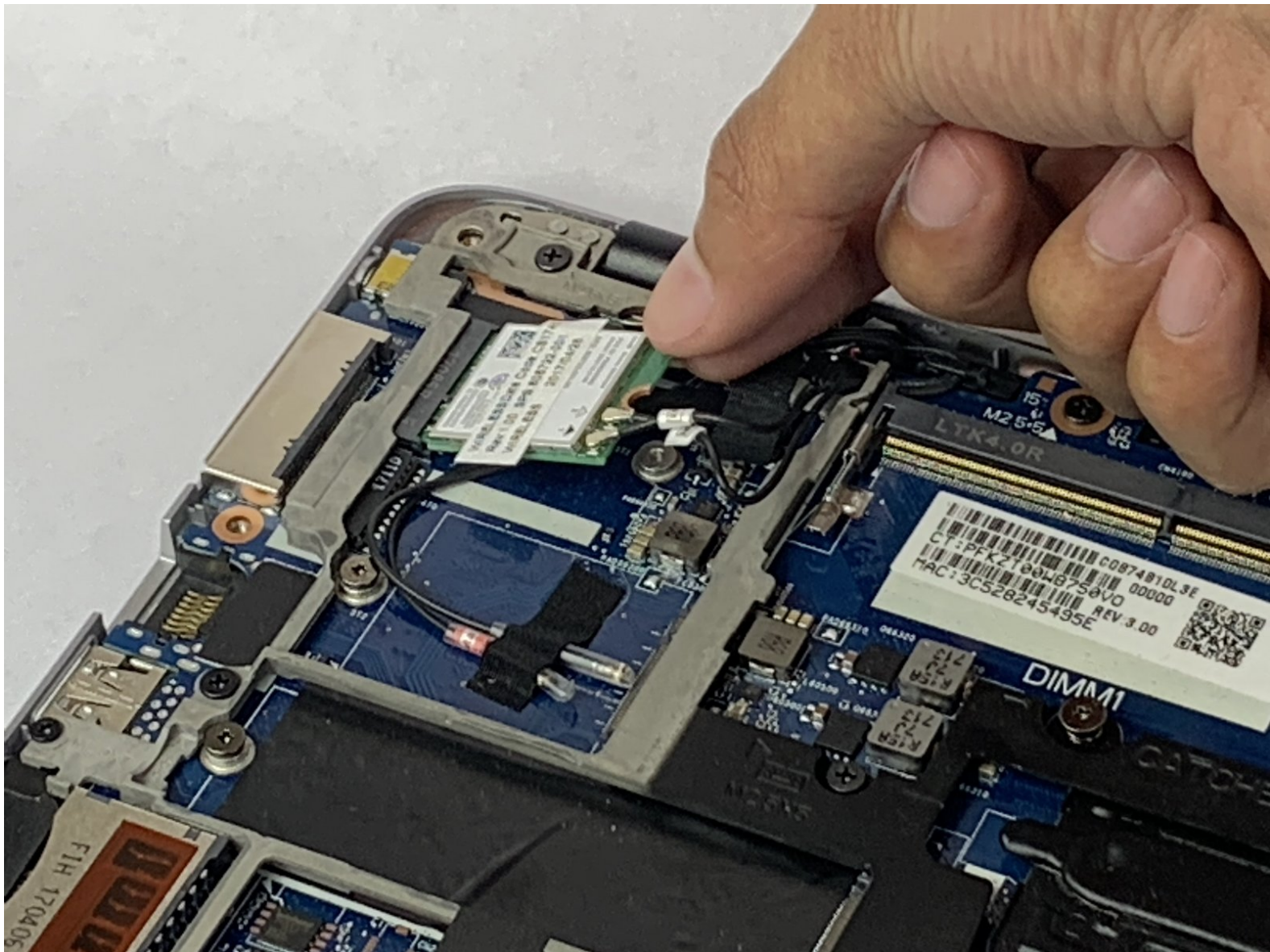




HP EliteBook 850 G3 WiFi Card Replacement

How to replace the WiFi card in an HP EliteBook 850 G3.

Written By: Annabeth Grover



INTRODUCTION

If your HP EliteBook 850 G3 laptop not connecting to the internet, use this guide to replace the wifi card in your device. Wireless Internet cards, also known as Local Area Network, or LAN, cards, are one of the many types of adapter cards that add capabilities to your computer. If the wifi card is faulty your laptop will not connect with the internet. Before beginning, make sure to power off your laptop completely and disconnect from any external power source. Before using this guide, feel free to check out the [troubleshooting page](#) to see if any issues can be resolved without a replacement.

TOOLS:

- [Phillips #0 Screwdriver](#) (1)
 - [1 x Opening Picks](#) (1)
-

Step 1 — WiFi Card



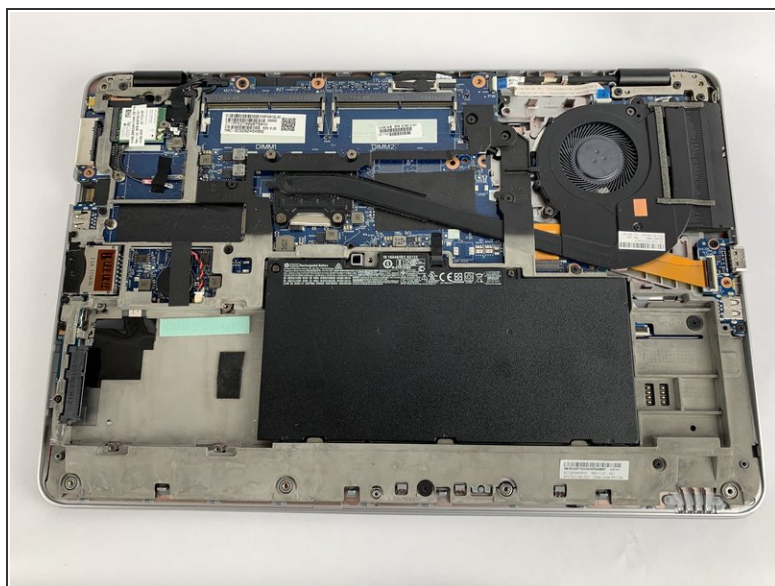
- ⚠ Turn off your laptop before starting
- Flip the laptop over so the model stickers face the ceiling.

Step 2



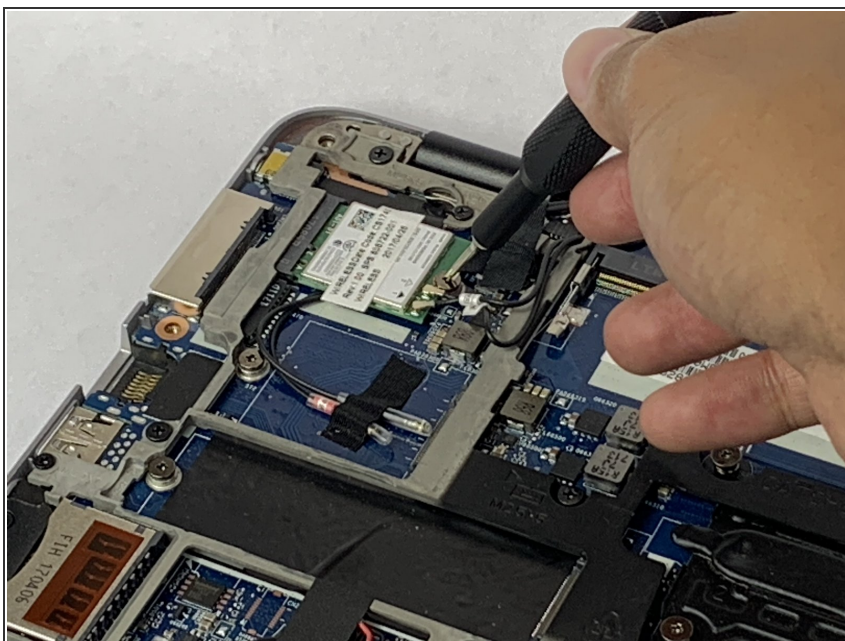
- Use a Phillips #0 screwdriver to remove eleven 5.7mm screws.

Step 3



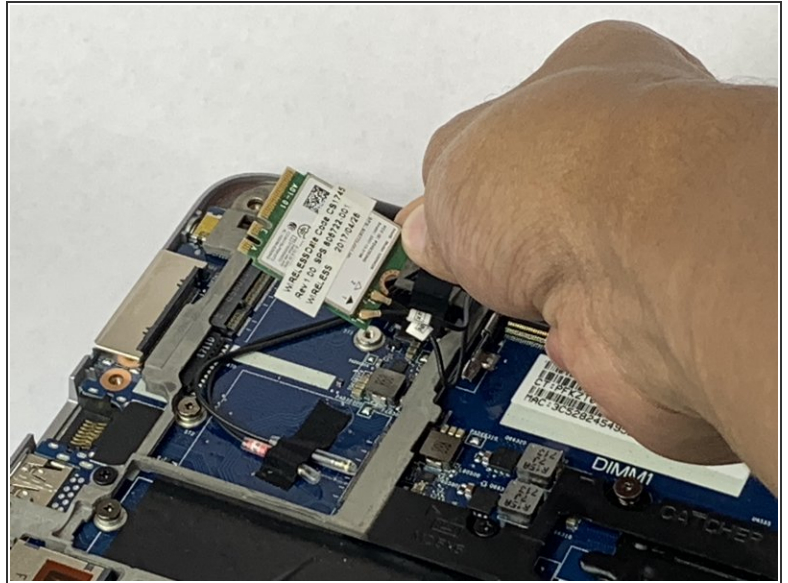
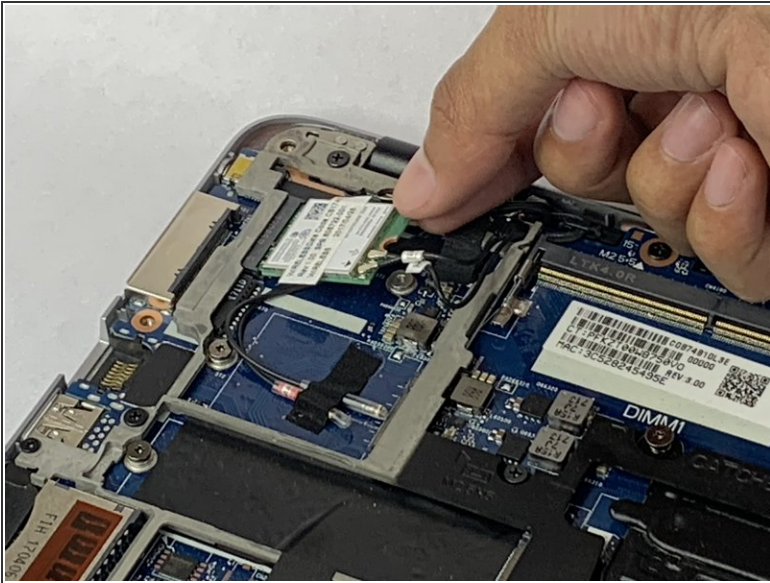
- Insert the iFixit opening pick underneath the plastic back of the laptop. Use force to pry back off.

Step 4



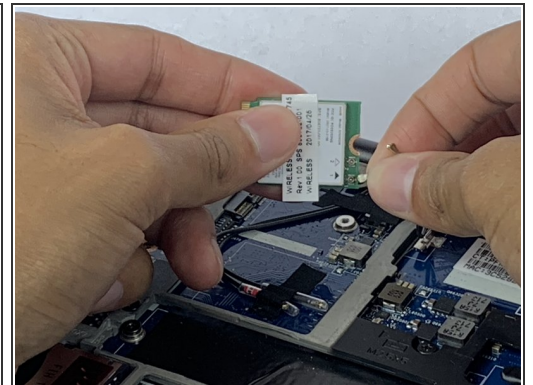
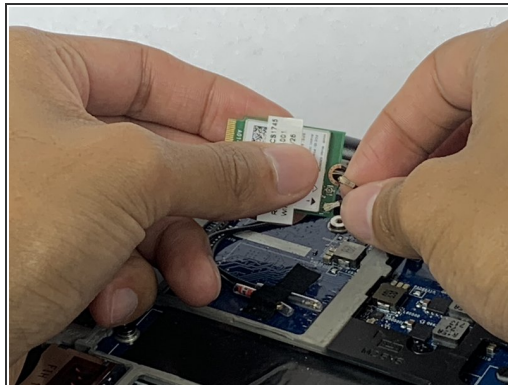
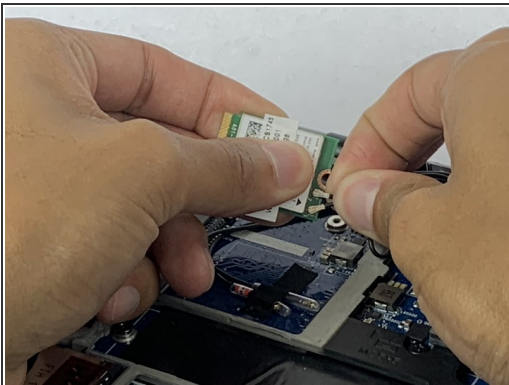
- Use the Phillips #0 screwdriver to remove the 3.3mm screw on the WiFi card.

Step 5



- Slide out the WiFi card.

Step 6



- Disconnect the coaxial cables wires from the WiFi card.

To reassemble your device, follow these instructions in reverse order.