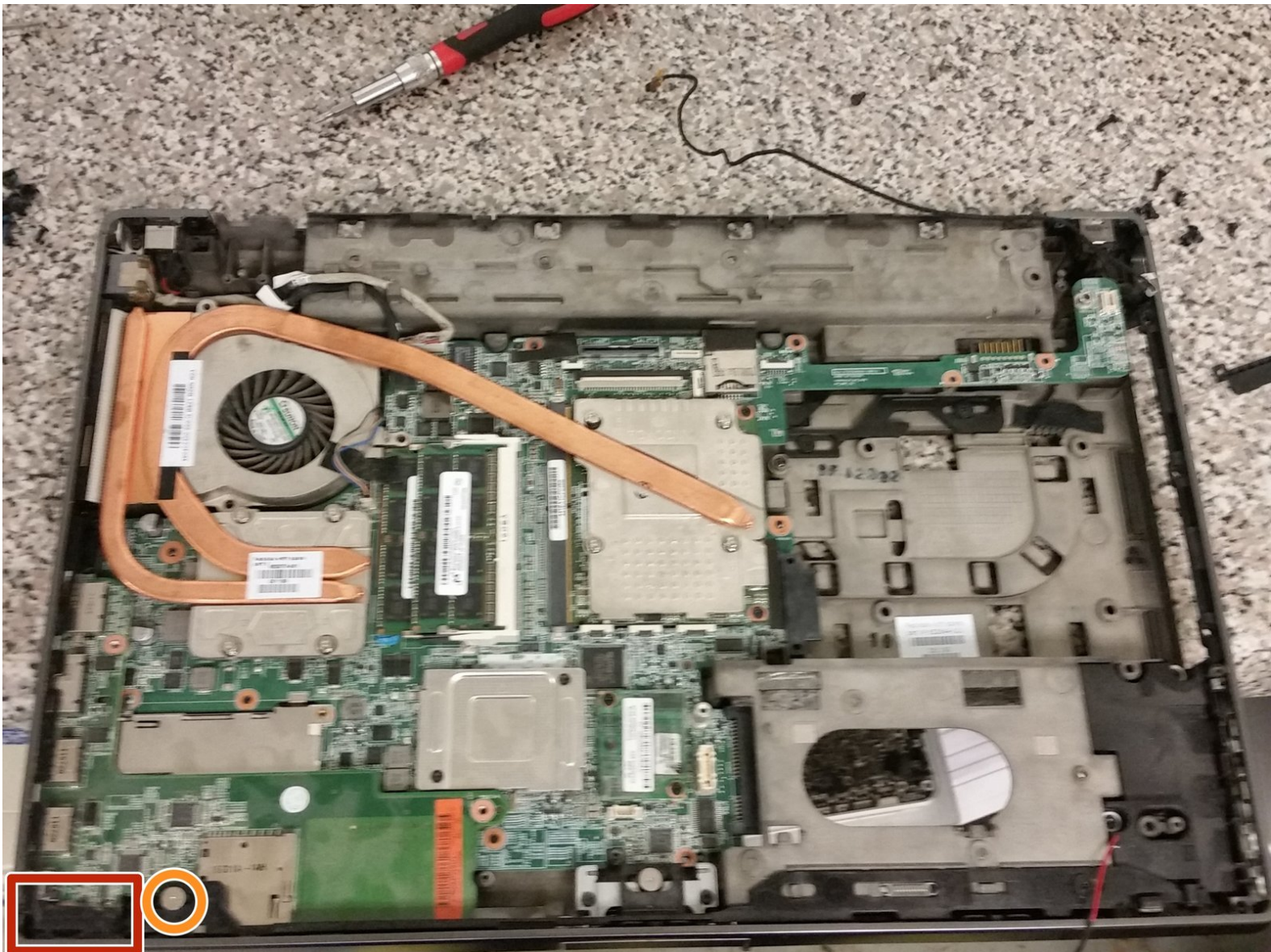




HP EliteBook 8560w Motherboard Replacement

This guide teaches you how to replace the motherboard in an HP EliteBook 8560w.

Written By: Joseph Sctbunio



INTRODUCTION

This guide teaches you how to replace the motherboard in an HP EliteBook 8560w.

TOOLS:

- [Phillips #1 Screwdriver](#) (1)
 - [TR9 Torx Security Screwdriver](#) (1)
 - [iFixit Opening Tools](#) (1)
 - [Spudger](#) (1)
 - [Anti-static mat + wrist band.](#) (1)
-

Step 1 — Remove the battery



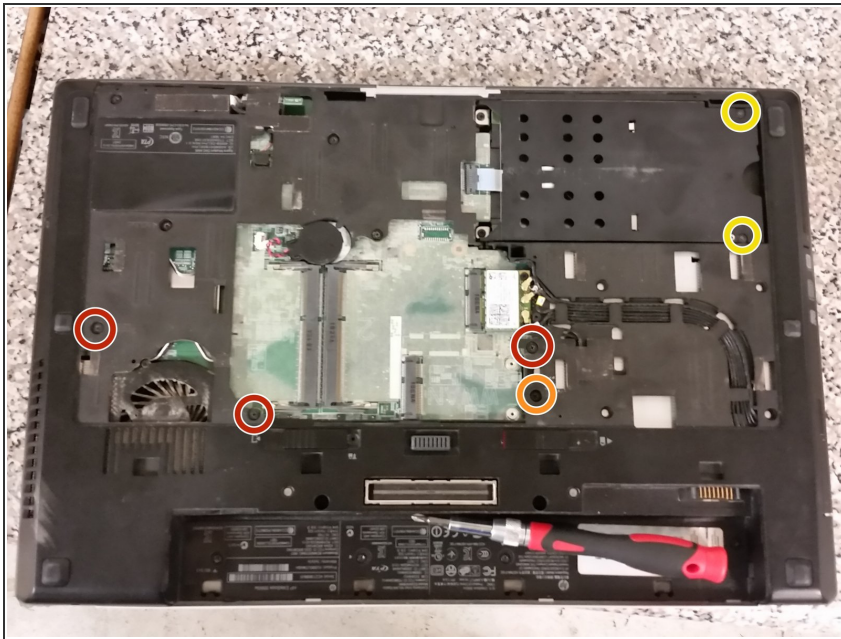
- With the back of the laptop facing towards you, simply push the battery latch to the right, and out comes the battery.

Step 2 — Remove the bottom cover



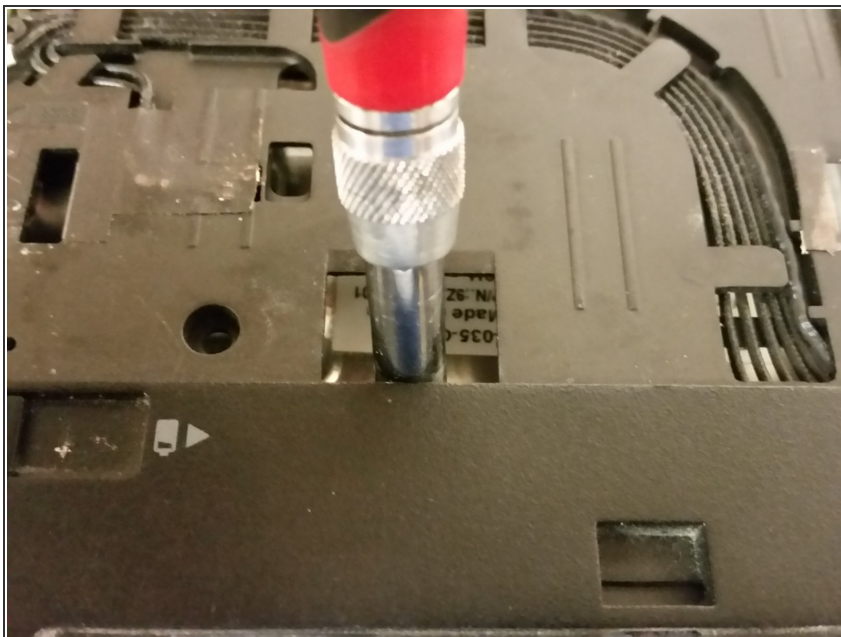
- Push the latch to the left like shown in the video, and then help the bottom cover off, like in the attached video.

Step 3 — Remove keyboard, disc drive & SC reader screws



- Get out the Philips #1 bit, and unscrew the three captive screws securing the keyboard.
- Remove the single captive Philips screw securing the disc drive, then push the disc drive out by using your screwdriver on the area right above the disc drive screw.
- Remove the two captive Philips screws securing the Smart Card (SC) reader, then lift the SC reader up. The SC reader is hinged at the point opposite to the screws.

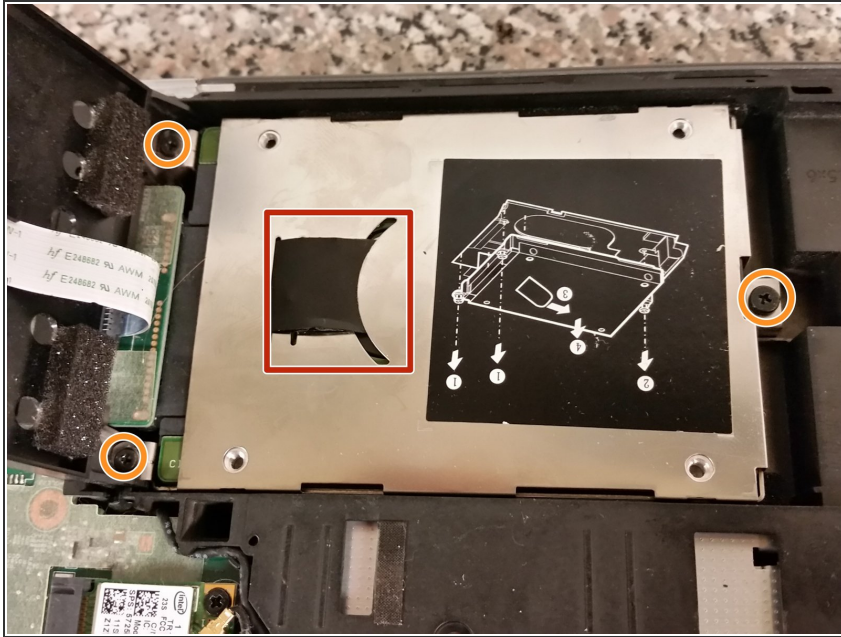
Step 4 — Remove keyboard



- With the laptop's screen open and the disc drive out, hold up the laptop, push on the underside of the metal plate below the keyboard.
- Flip the laptop right side-up and pull the keyboard, taking care not to rip the ribbon cables out of their sockets.

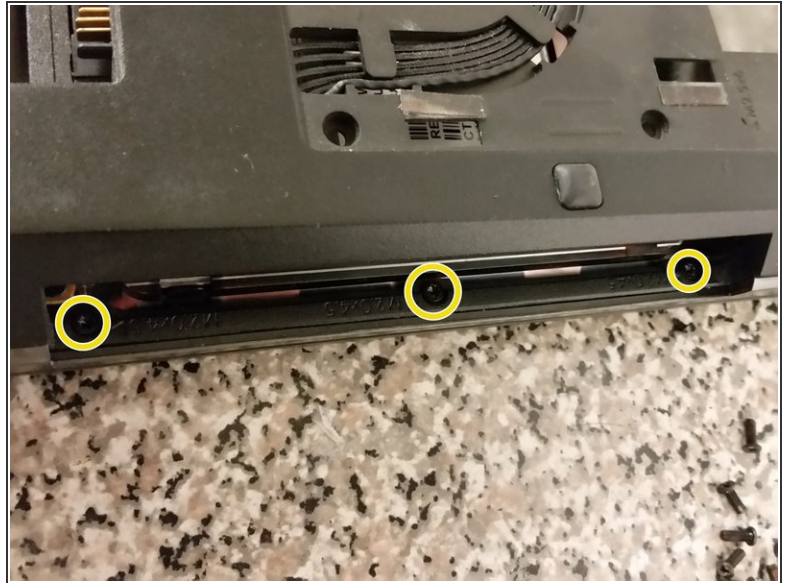
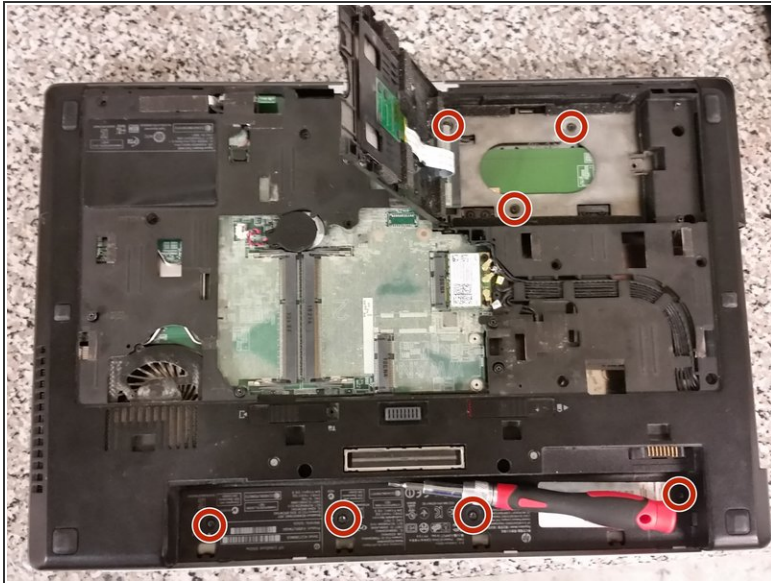
- Disengage the ribbon cables from their sockets by pulling up on each socket tab, then pulling the cable gently upwards.

Step 5 — Remove hard drive caddy



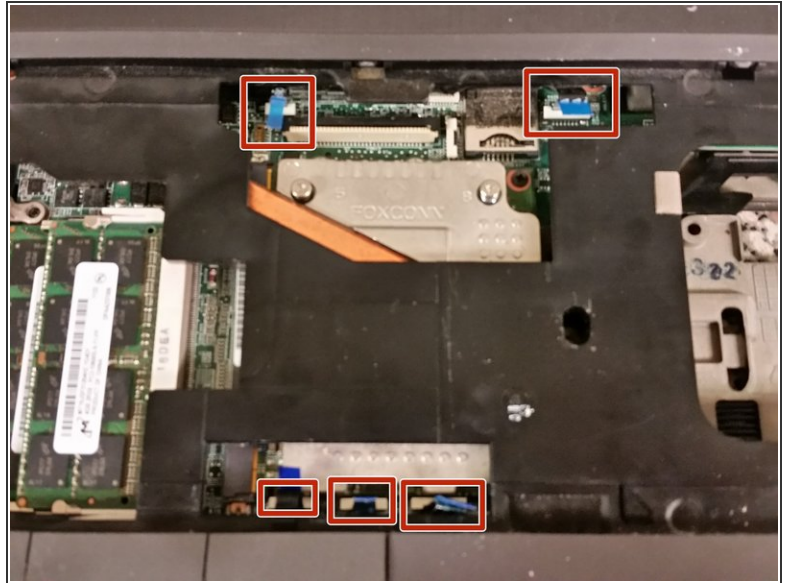
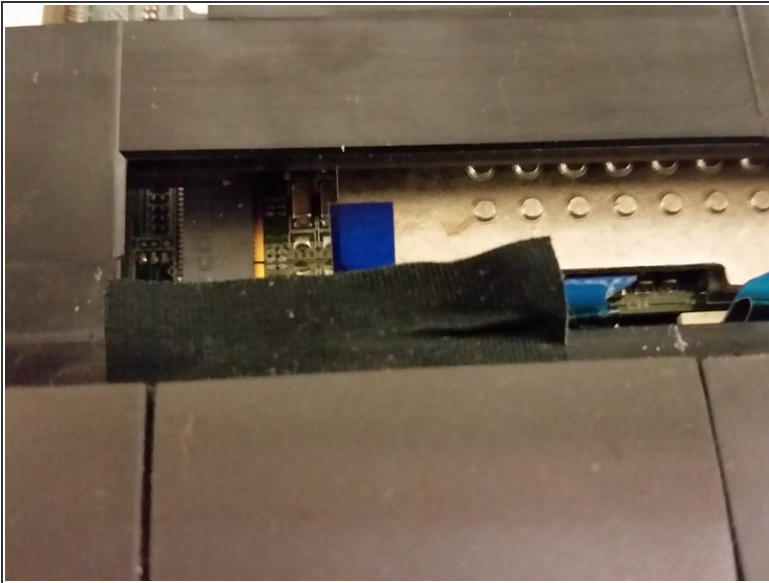
- Use your fingers or a screwdriver to get under the black pull tab for the hard drive, and pull it out from the curved hole it is under.
- Remove the three captive Philips screws securing the hard drive caddy.

Step 6 — Remove palmrest screws



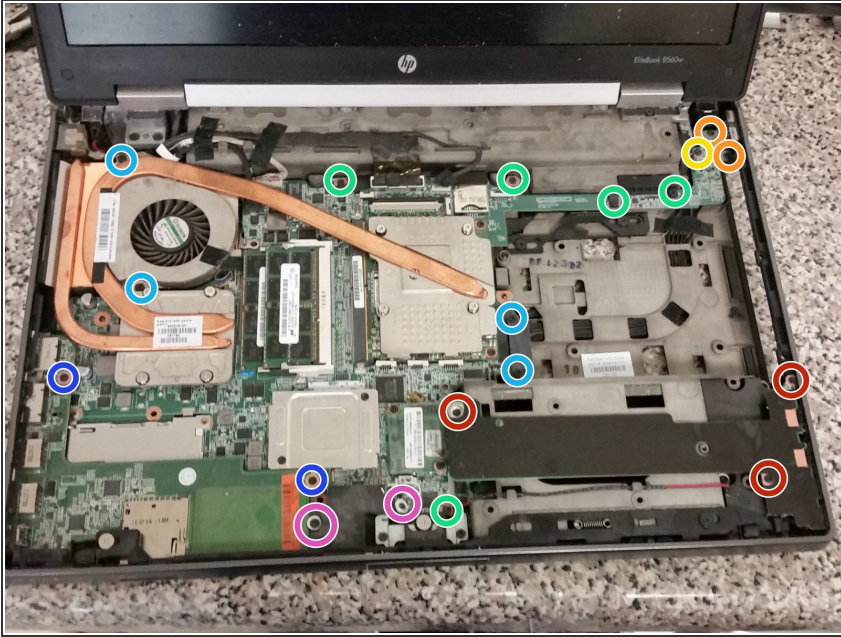
- Break out the Torx T9 bit, and start removing the seven M2.5x3 screws securing the palmrest.
- Remove the three M2x4.5 screws under where the optical drive was.

Step 7 — Remove the palmrest cables & the palmrest



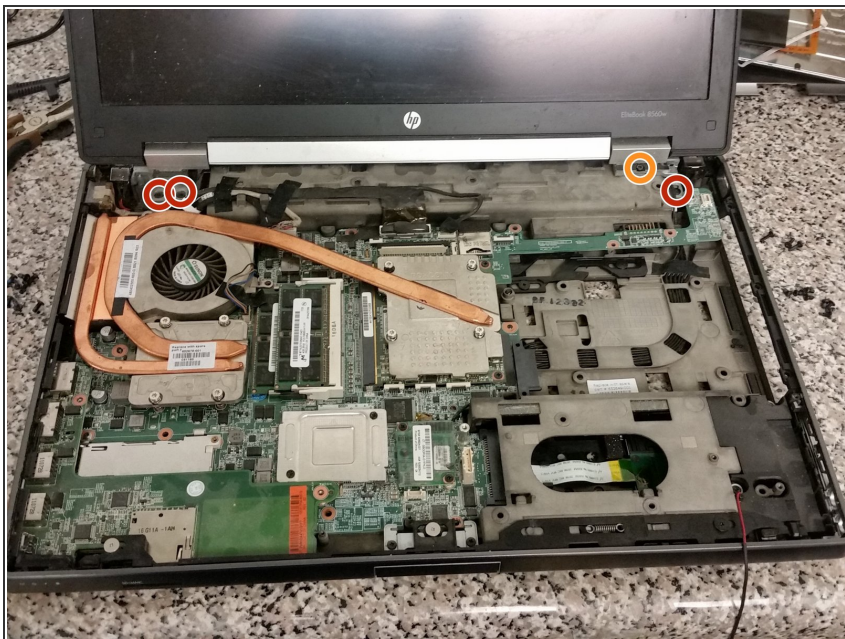
- Remove the tape covering the touchpad connector.
 - Use any long tool to pull gently upwards on the touchpad cable locking connector, then pull up on the cable.
 - Repeat for the next four connectors.
- ⚠ These locking connectors are easy to break, so be very cautious! On the other hand, if you're replacing the motherboard, it probably doesn't matter.
- Pull upwards on the palmrest.

Step 8 — Remove USB board, VGA board, and screws



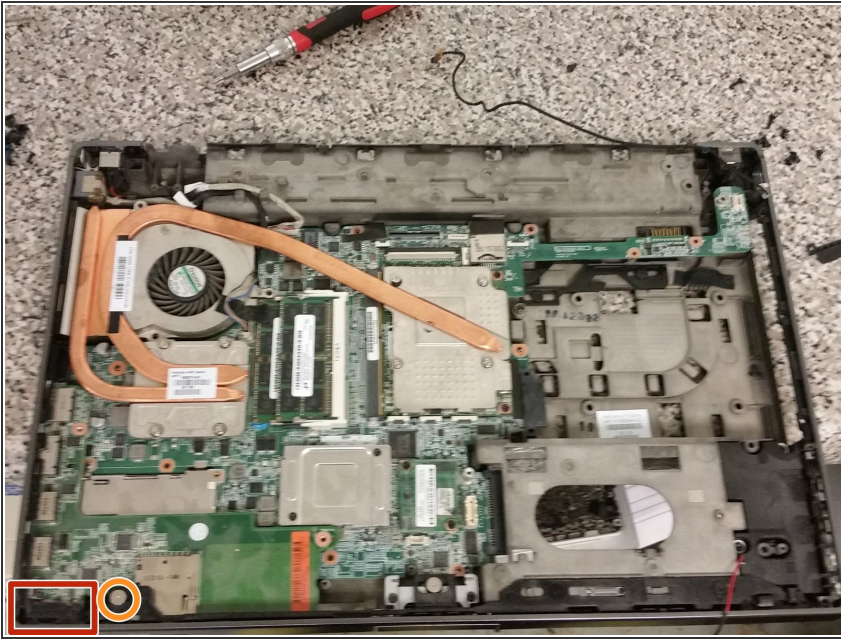
- Remove the three small screws from the USB board, and remove the USB board.
- Remove the two small screws from the VGA board.
- Remove the one long screw from the VGA board, and remove the VGA board. This is a tight fit and may require a little jiggling to remove/replace.
- Remove the five small screws from the motherboard.
- Remove the four long screws from the motherboard/CPU cooler.
- Remove the two short screws from the DP/USB/Firewire board.
- Remove the two mid-length screws from the left speaker, and disconnect the speaker connector from the motherboard.

Step 9 — Remove LCD assembly



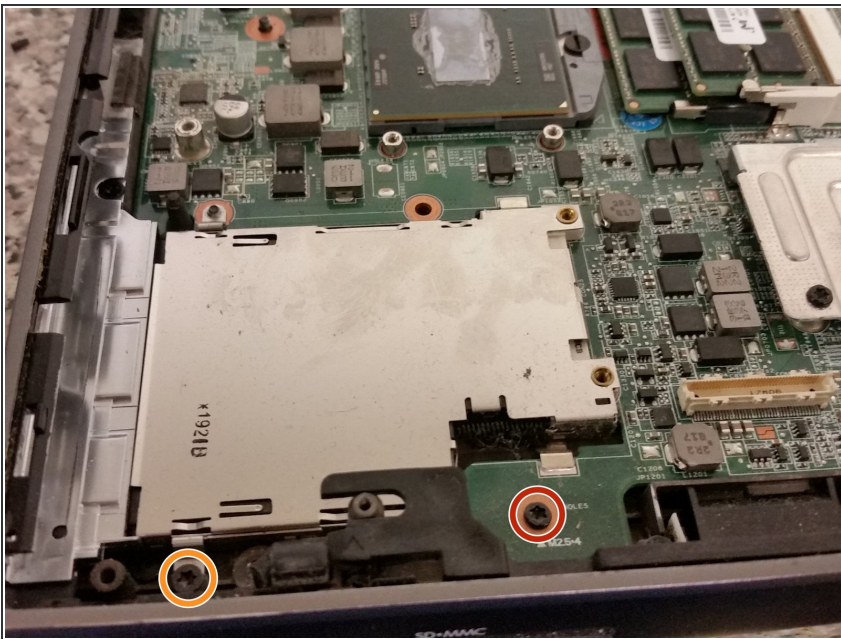
- Remove the short screw securing the LCD assembly to the base.
- Remove the three long screws securing the LCD assembly to the base.
- Flip the laptop over and remove the wireless antennas, pulling them from their clips.
- Also remove the modem port plug from the modem card, and remove the cables from their clips.
- Remove the four silver screws from the back of the laptop securing the LCD assembly to the base. Keep these screws separate from the other ones.
- Remove four more black screws securing the LCD assembly to the base.
- Remove the LCD cables and LCD assembly from the motherboard.

Step 10 — Remove SD Reader Board



- Here on the left-front, there is some rubber. Take the rubber out to reveal a small screw.
- Unscrew one screen latch screw.
- Lift the SD Reader board at 45-degree angle, and pull it out.

Step 11 — Remove the motherboard



- Underneath where the SD Reader board was, there will be one short screw holding the motherboard.
- There will also be a longer screw.
- There will be a short cable attached to the bottom of the motherboard. Don't tug on the motherboard just yet, just lift it slowly and carefully. Be sure to remove that cable.
- At last, you are done!

To reassemble your device, follow these instructions in reverse order.