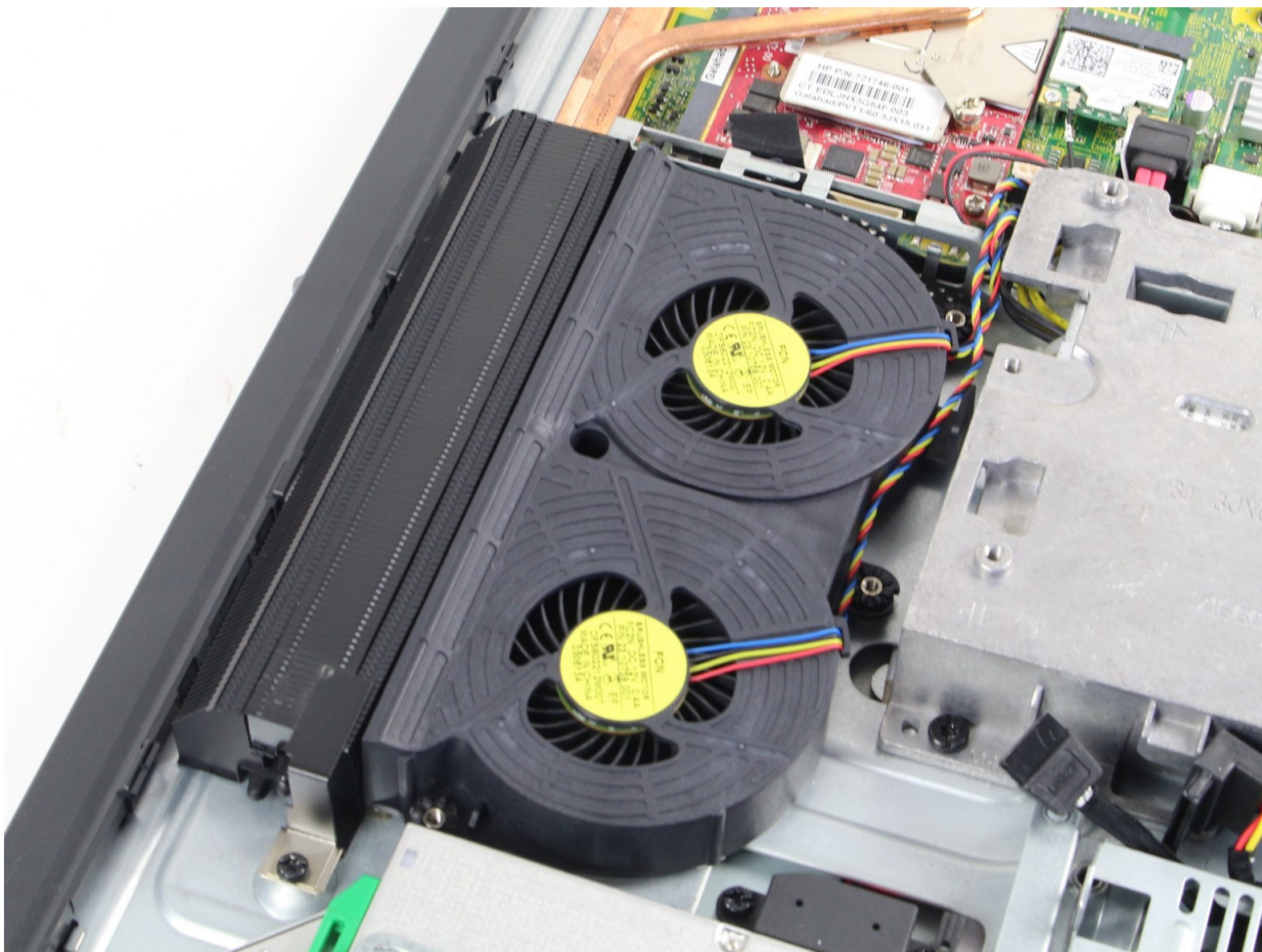




# HP EliteOne 800 G1 Fan Assembly Replacement

This guide will show you how to remove the fan assembly from the computer. Follow this guide if you need to replace a broken fan or if you need to clean the fan assembly more effectively.

Written By: Michael Ewing



This document was generated on 2019-10-01 03:18:43 PM (MST).

---

## INTRODUCTION

This guide is meant to remedy a faulty fan. Signs of a defective fan include overheating, rapid battery power depletion or grinding noises. This guide involves many small parts, do not lose track of these because they are necessary for reassembly.



### TOOLS:

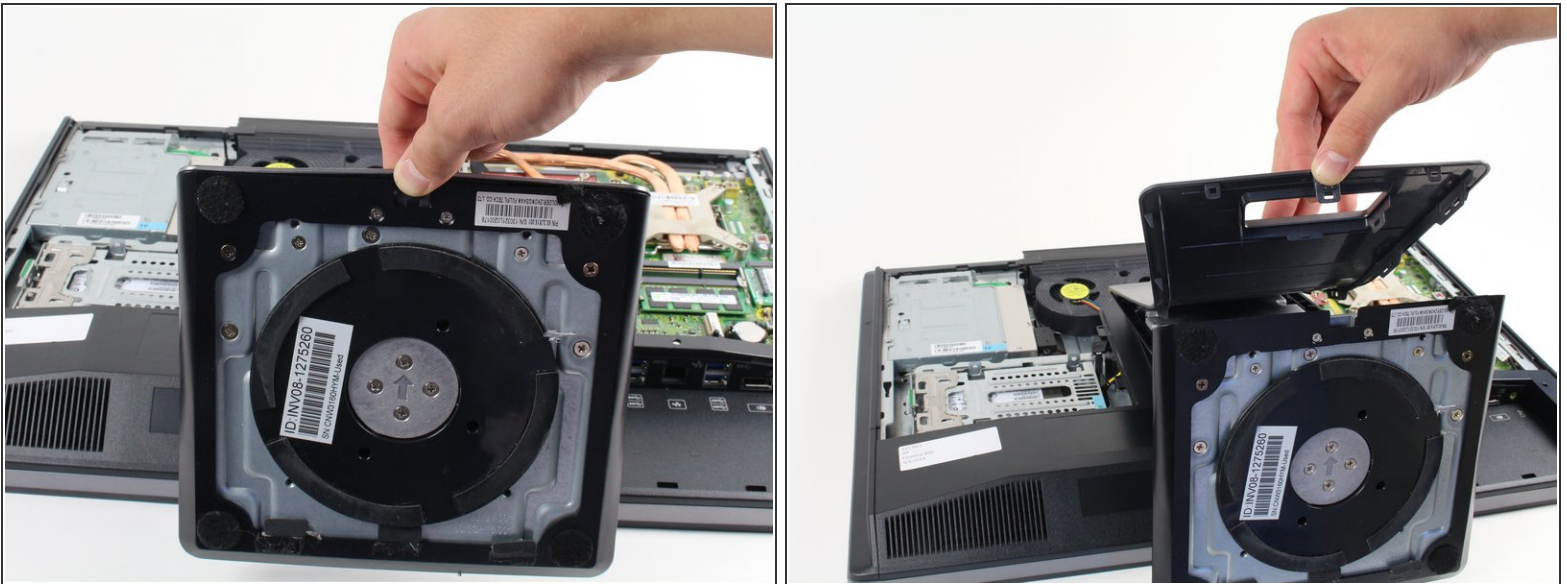
- [T15 Security Torx Screwdriver](#) (1)
-

## Step 1 — Removing the Back Cover



- Place computer with the screen down on a flat surface.
- Push the two locking latches to the unlocked position.
- Push the cover toward the top of the computer and lift up.

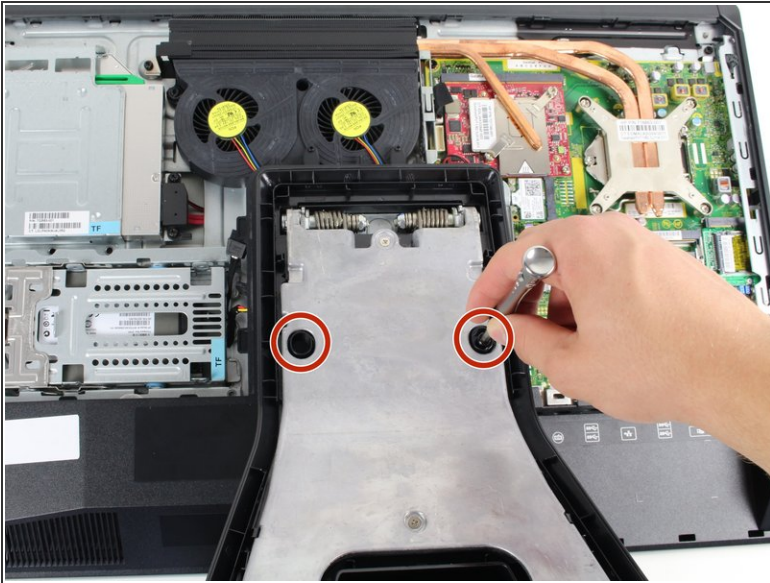
## Step 2 — Removing Stand



- Press locking latch on the bottom of the base of the stand.
- Pull the plastic cover off of the stand.

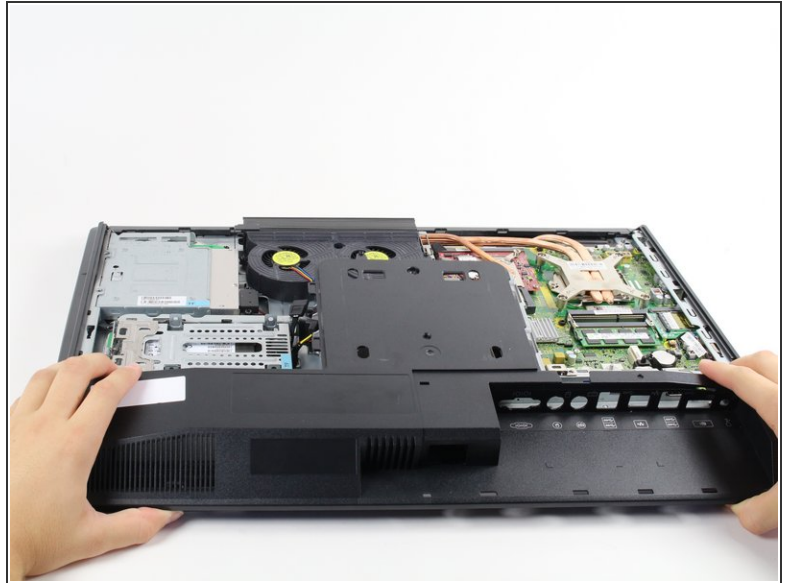


## Step 3



- Use a Torx T15 driver and stick it through the holes on the stand in order to remove the two 12mm screws on the back of the main unit.
- Tilt stand and lift up to remove it.

## Step 4



- Use a Torx T15 driver to remove the single 10mm screw on the back panel.
- Pull the back panel toward the bottom of the device to remove it.

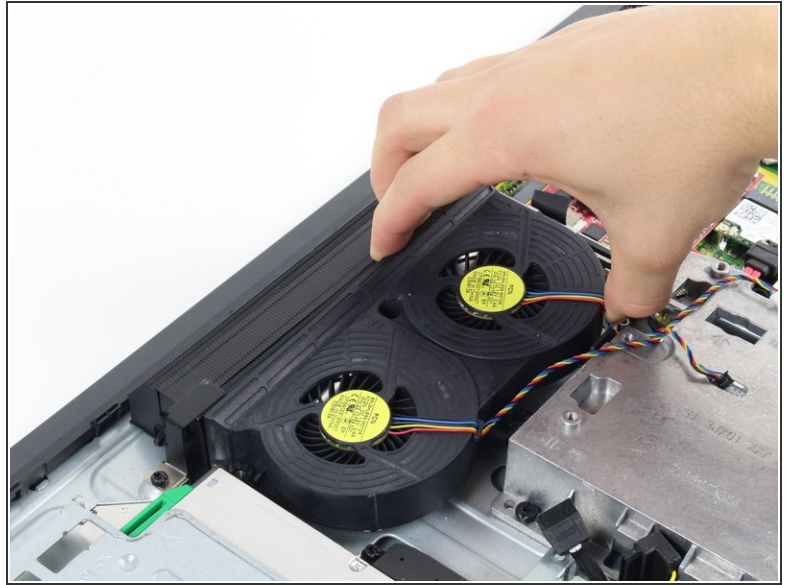
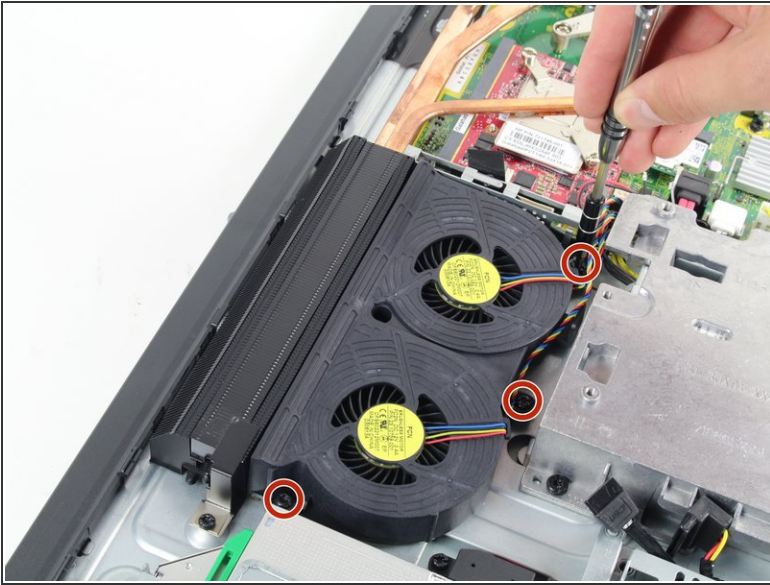
## Step 5 — Fan Assembly



- Disconnect these two power connectors on the motherboard, one connector is white and the other is black. You can identify the correct wires by their braided colors: red, yellow, blue, and black.



## Step 6



- Use a Torx T15 driver to remove the three 6mm screws surrounding the fan assembly.
- Pull the fan assembly up from the case to remove it.

To reassemble your device, follow these instructions in reverse order.