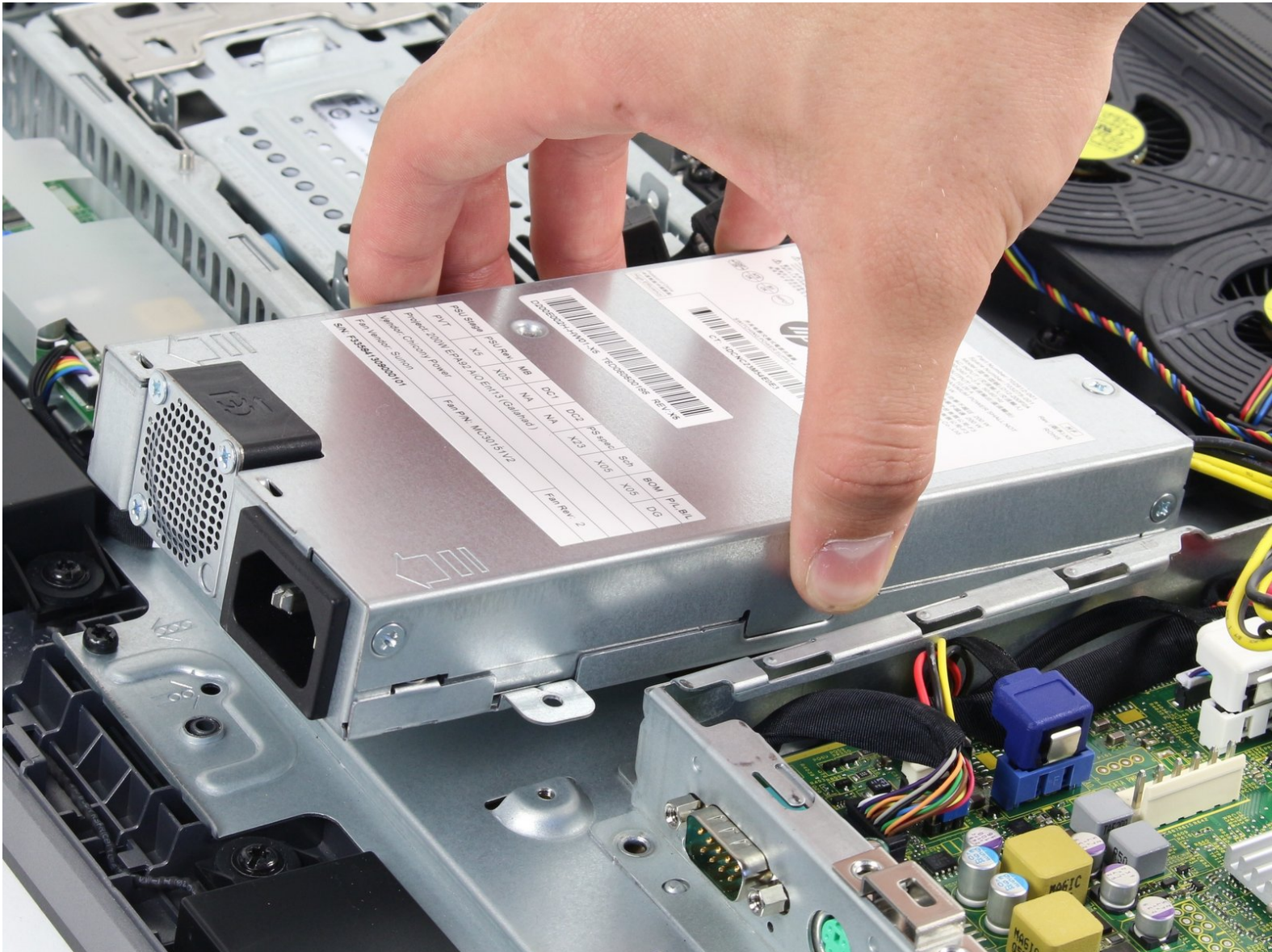


Written By: Michael Ewing



Page 1 of 7

---

## INTRODUCTION

This guide is to be used in the case of a power supply that has begun to give out. Power supply failure can be recognized through symptoms such as slower run time, or issues with pace of processing,

---

### TOOLS:

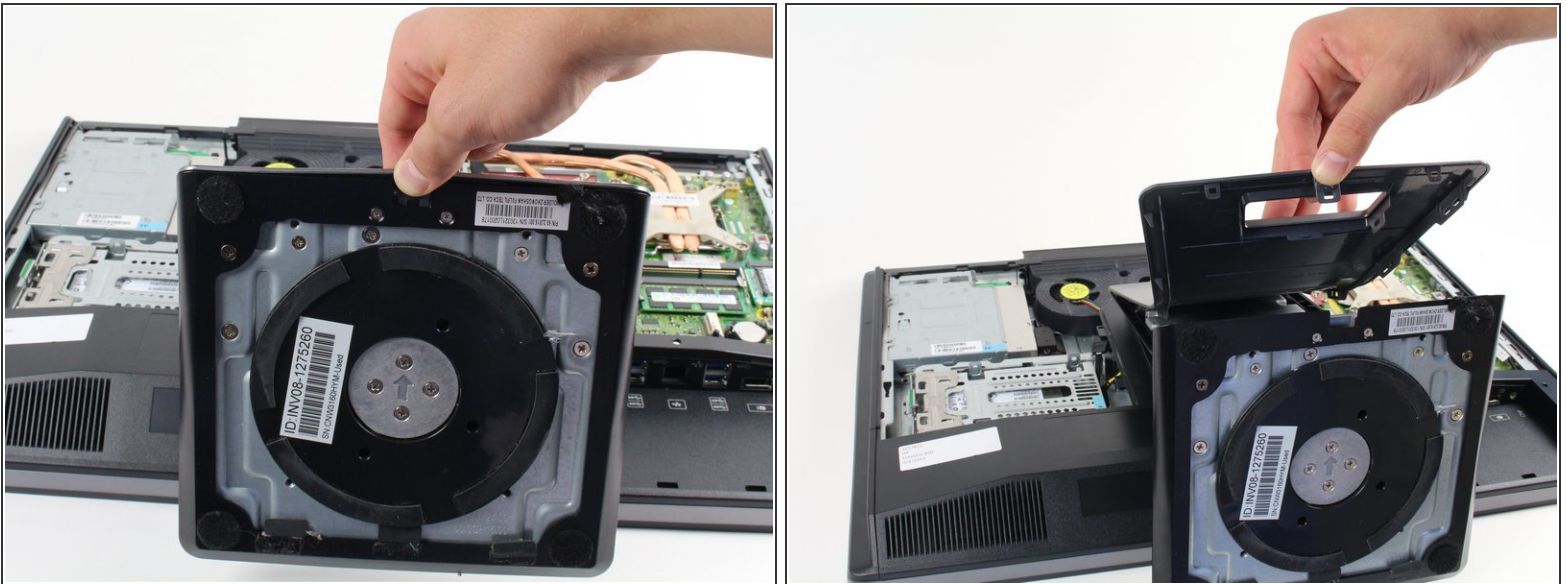
- [T15 Security Torx Screwdriver](#) (1)
-

## Step 1 — Removing the Back Cover



- Place computer with the screen down on a flat surface.
- Push the two locking latches to the unlocked position.
- Push the cover toward the top of the computer and lift up.

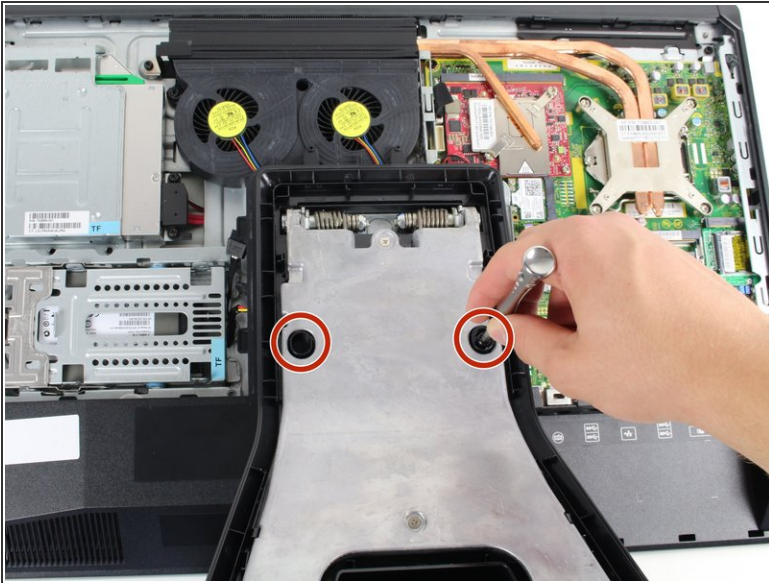
## Step 2 — Removing Stand



- Press locking latch on the bottom of the base of the stand.
- Pull the plastic cover off of the stand.

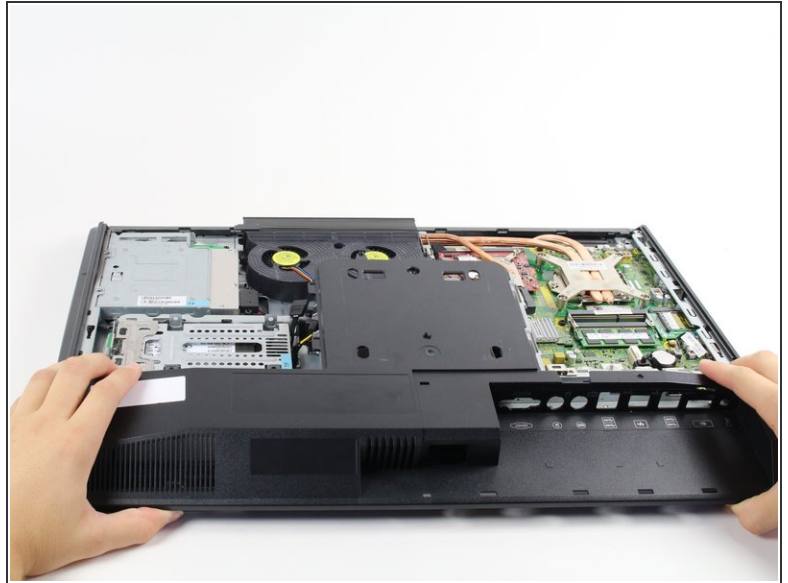


## Step 3



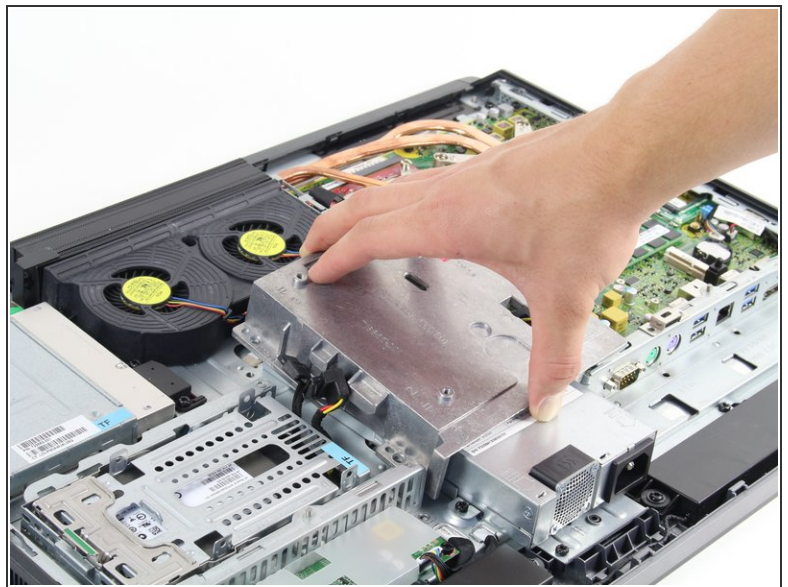
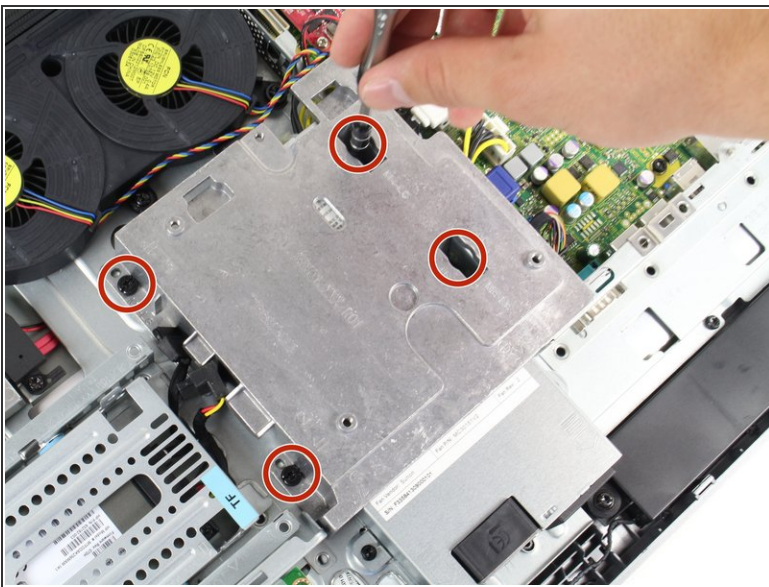
- Use a Torx T15 driver and stick it through the holes on the stand in order to remove the two 12mm screws on the back of the main unit.
- Tilt stand and lift up to remove it.

## Step 4



- Use a Torx T15 driver to remove the single 10mm screw on the back panel.
- Pull the back panel toward the bottom of the device to remove it.

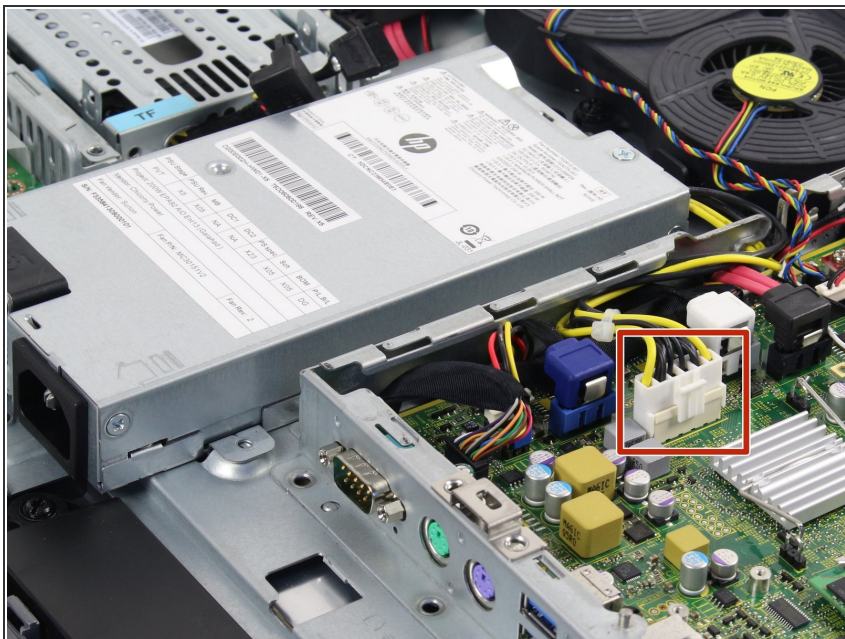
## Step 5 — Power Supply



- Use a Torx T15 driver to remove the four 10mm screws on the VESA mount cover.
- Lift up on the VESA mount cover to remove it.

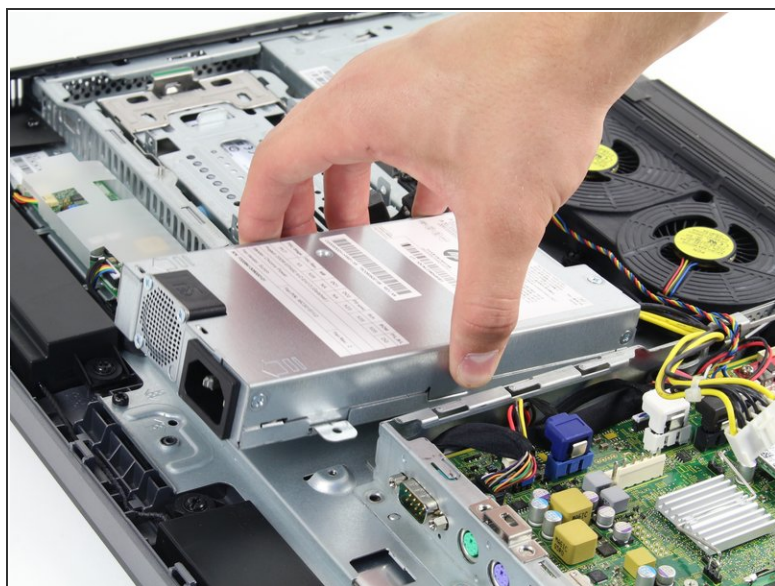
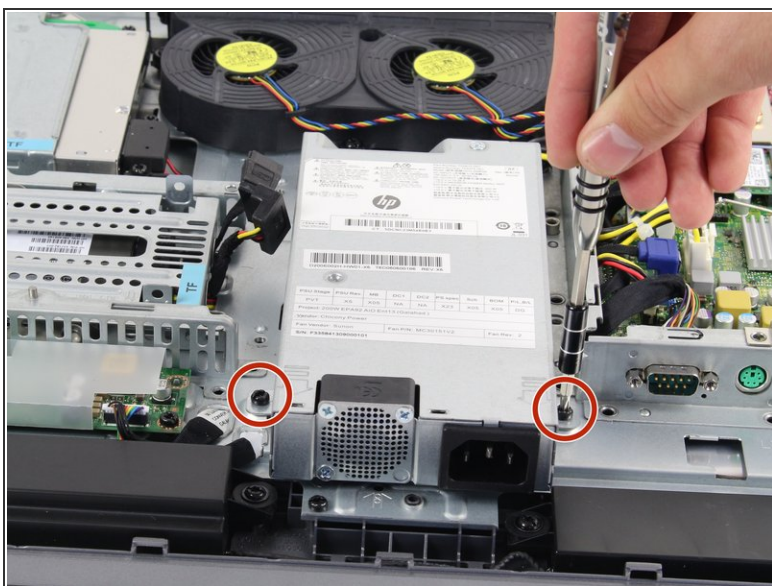


## Step 6



- Disconnect the power supply's black and yellow cable from the motherboard.

## Step 7



- Use a Torx T15 driver to remove the two 8mm screws on either side of the power supply.
- Lift the power supply from the case to remove it.

To reassemble your device, follow these instructions in reverse order.