



HP ElitePad 1000 G2 Display Replacement

How to replace the touch screen of the HP ElitePad 1000 G2. Model number HSTNN-C78C.

Written By: Jonathan Beasey



INTRODUCTION

If your HP ElitePad 1000 G2 (model HSTNN-C78C) touch screen isn't responding to inputs intermittently or entirely, use this guide to replace the display assembly.

Before using this guide, refer to our troubleshooting page for an [unresponsive touch screen](#) as replacement may not be necessary. Make sure to clean the screen of dirt, and [small amounts of moisture](#) can interfere with the functionality of the touch screen. Make sure to restart the tablet as a [minor software glitch](#) may cause the screen to freeze up.

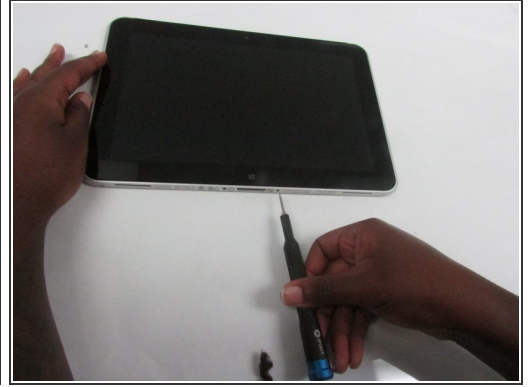
In the case of a shattered glass display use the following [guide](#) as a reference before continuing with this guide.



TOOLS:

- [iFixit Opening Tools](#) (1)
 - [iFixit Opening Picks set of 6](#) (1)
 - [Phillips #00 Screwdriver](#) (1)
 - [Suction Handle](#) (1)
-

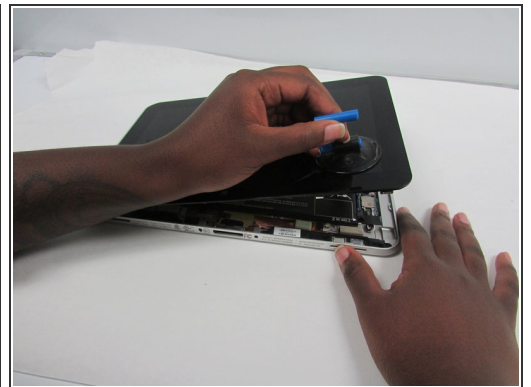
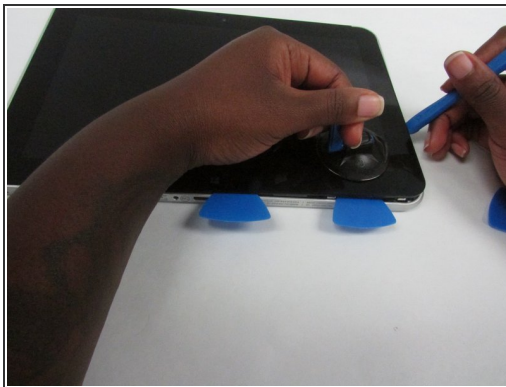
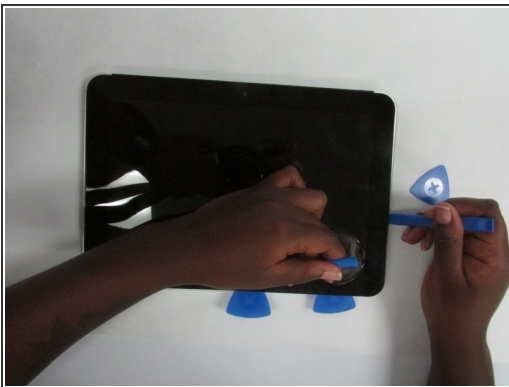
Step 1 — Display



Before disassembling the tablet: make sure the tablet is off, disconnect the power cord from the tablet, and disconnect all external devices from the tablet.

- Using a Phillips #00 screwdriver, remove the two Phillips PM 1.4×3.2mm screws located next to the charging port.

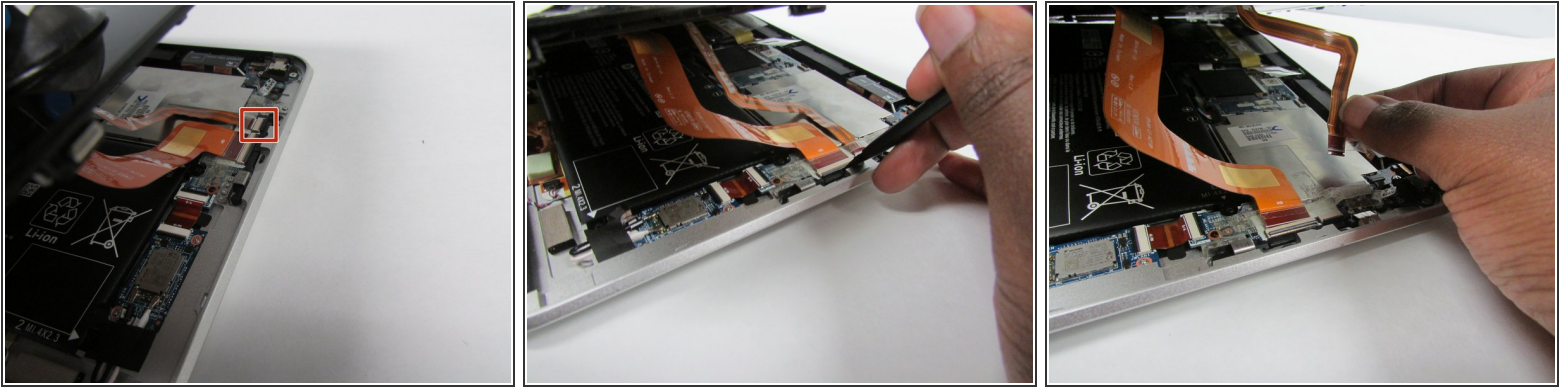
Step 2




- Place the suction cup on the lower right corner of the tablet display glass, making sure to place the suction cup inside the edges of the border of the display glass.
- Insert a plastic pick in between the display and the tablet case. Then use a plastic removal tool to separate the display further.
- Pull on the suction cup while using the prying tool to separate the display from the tablet.

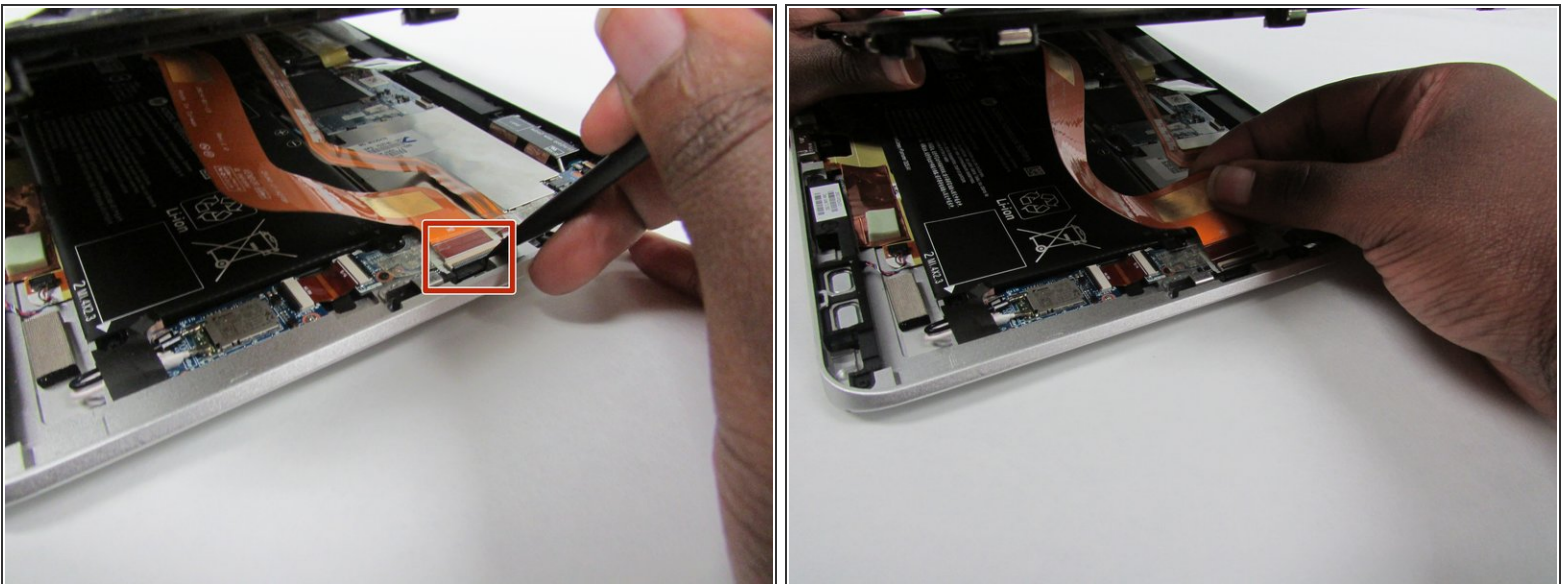
⚠ Gently lift the display from the tablet in order to avoid damaging the cables.

Step 3



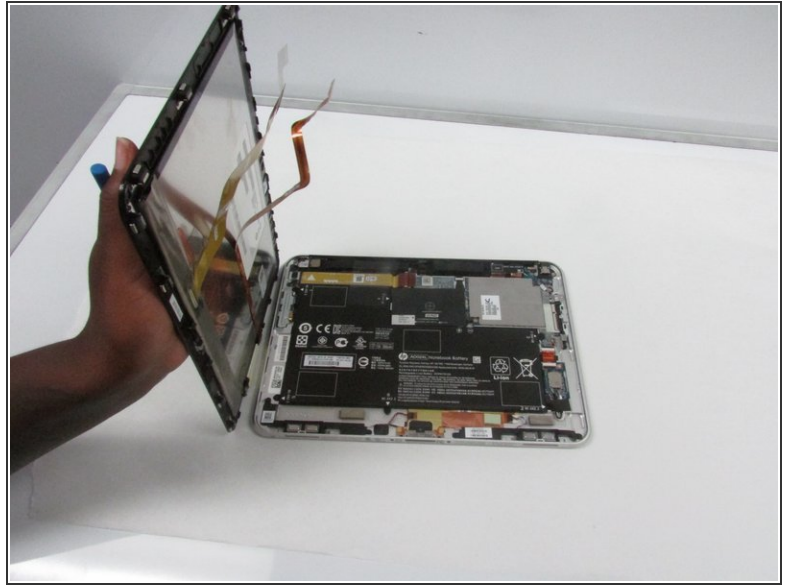
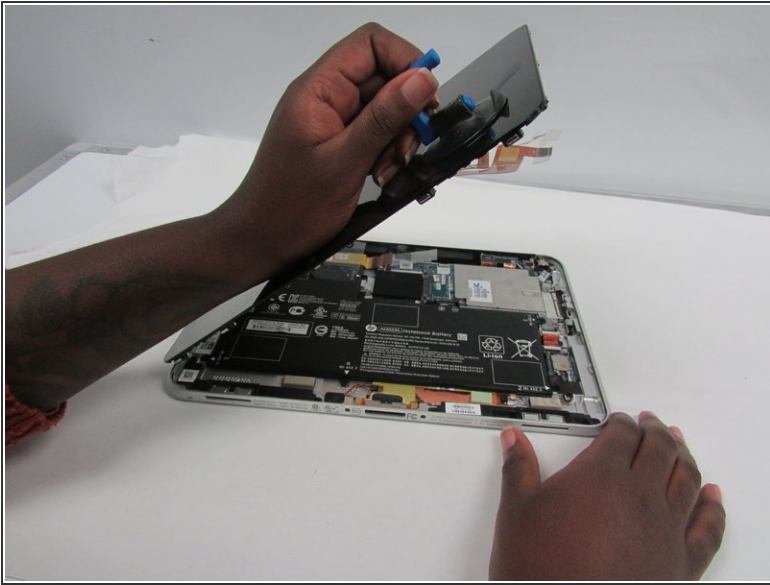
-  To disconnect the cables, use the spudger tool to gently pull back on the black tab located on the side of the connector while gently pulling the cable.
- Release the zero insertion force (ZIF) connector to which the TouchScreen cable is attached, and then disconnect the TouchScreen cable from the system board.

Step 4



- Release the ZIF connector to which the display cable is attached, and then disconnect the display cable from the system board.

Step 5



- Remove the display from the tablet.

To reassemble your device, follow these instructions in reverse order.