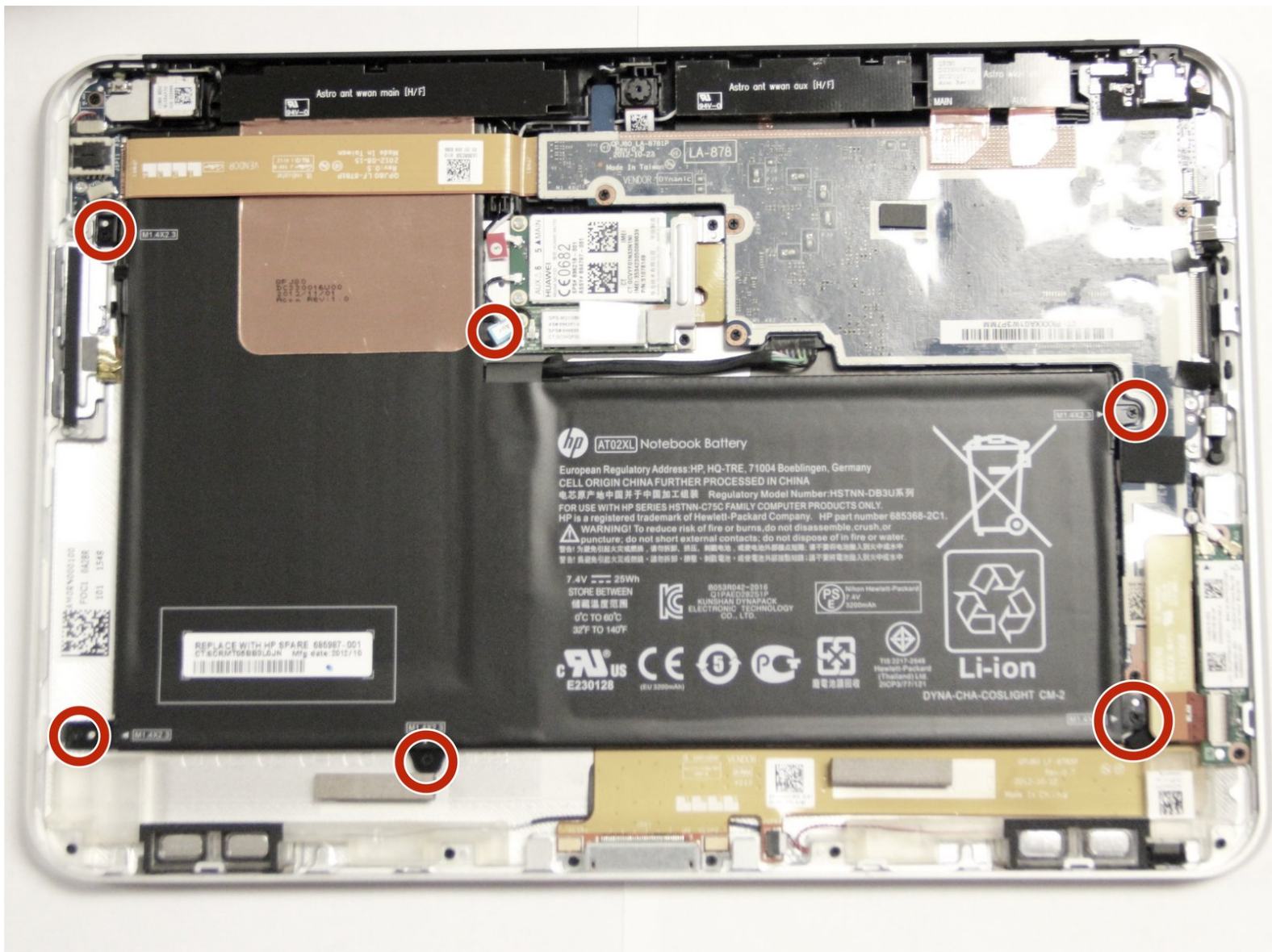




# HP ElitePad 900 Battery Replacement

Replace the battery in your HP ElitePad 900.

Written By: Kyle Marques



---

## INTRODUCTION

Use this guide to replace the battery in your HP ElitePad 900.



### TOOLS:

- [Phillips #000 Screwdriver](#) (1)
  - [iFixit Opening Tools](#) (1)
  - [Suction Handle](#) (1)
-

## Step 1 — Front Panel Assembly



- Unscrew the two 2.8mm Phillips #000 screws near the power connector.

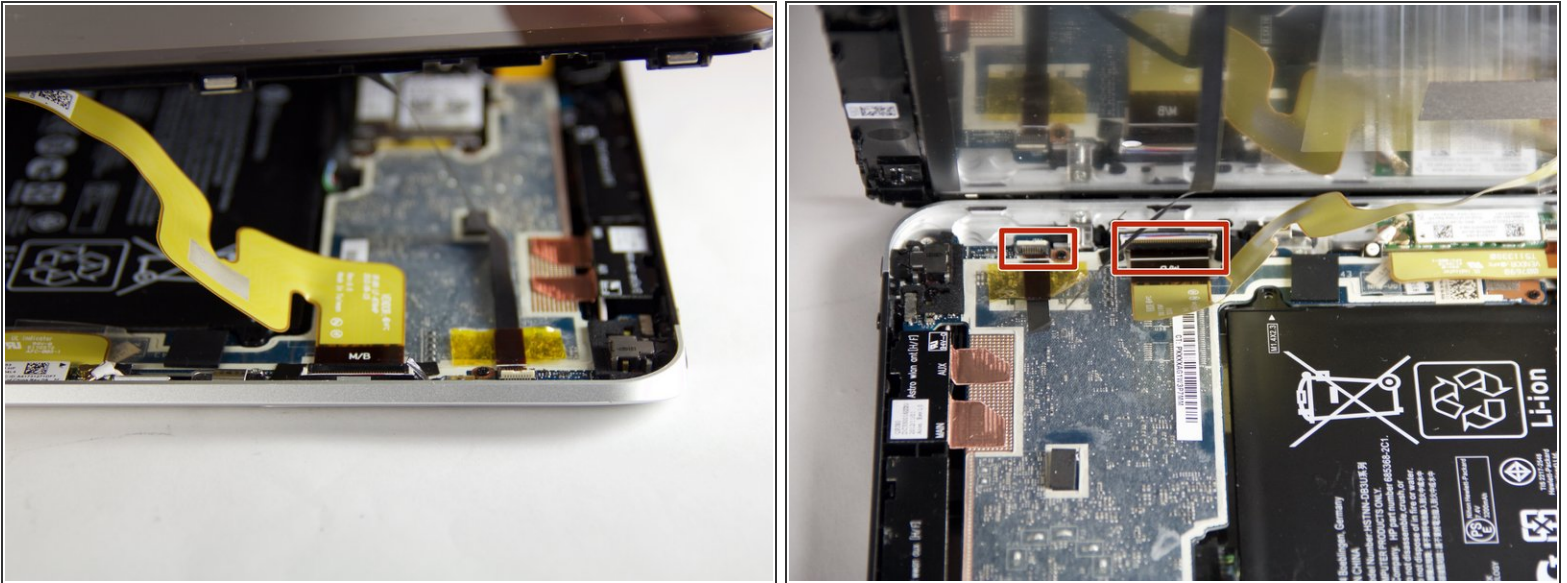
## Step 2



- Use a suction cup to pull the display assembly up.

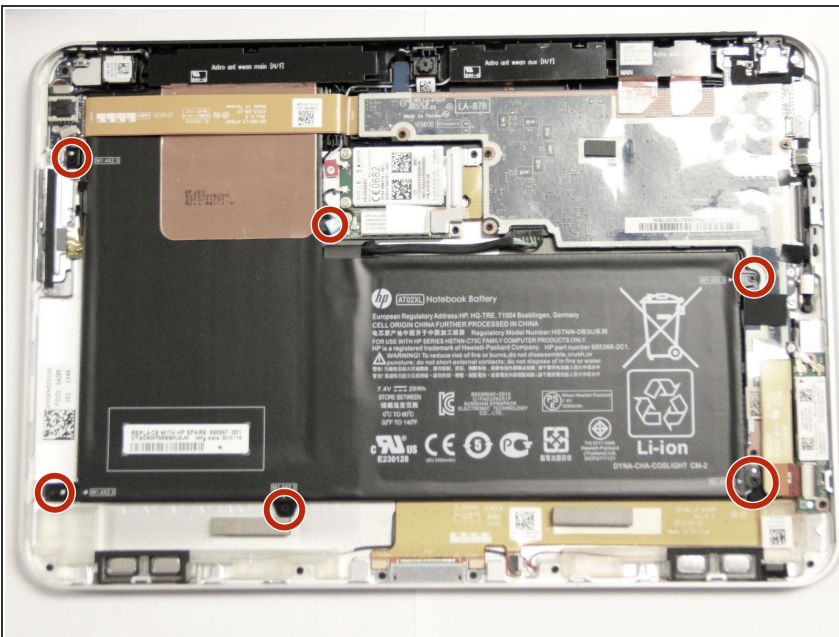


## Step 3



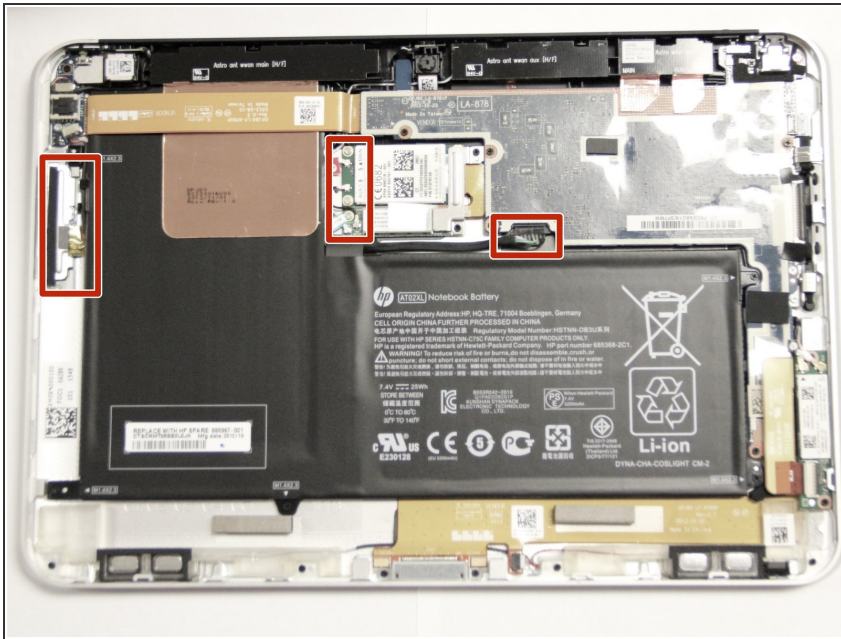
- Use the tip of a spudger to disconnect the two display [ZIF connectors](#).

## Step 4 — Battery



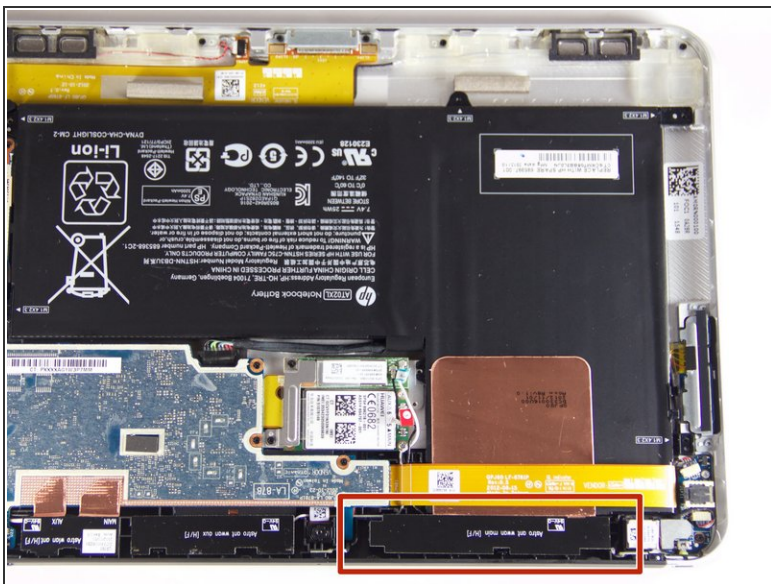
- Remove the six 2.2mm Phillips #000 screws securing the battery to the device.

## Step 5



- Disconnect and move the wires out of the way.

## Step 6



- Lift cover.



## Step 7



- Slide out the battery.

To reassemble your device, follow these instructions in reverse order.