



HP ElitePad 900 Speakers Replacement

Replace the speakers in your HP ElitePad 900.

Written By: Kyle Marques



INTRODUCTION

Use this guide to replace the speakers in your HP ElitePad 900.



TOOLS:

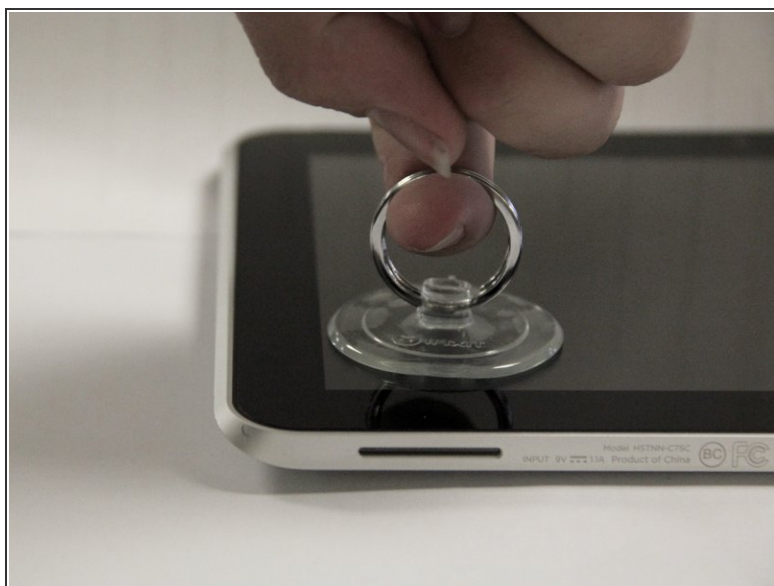
- [Phillips #000 Screwdriver](#) (1)
 - [iFixit Opening Tools](#) (1)
 - [Suction Handle](#) (1)
-

Step 1 — Front Panel Assembly



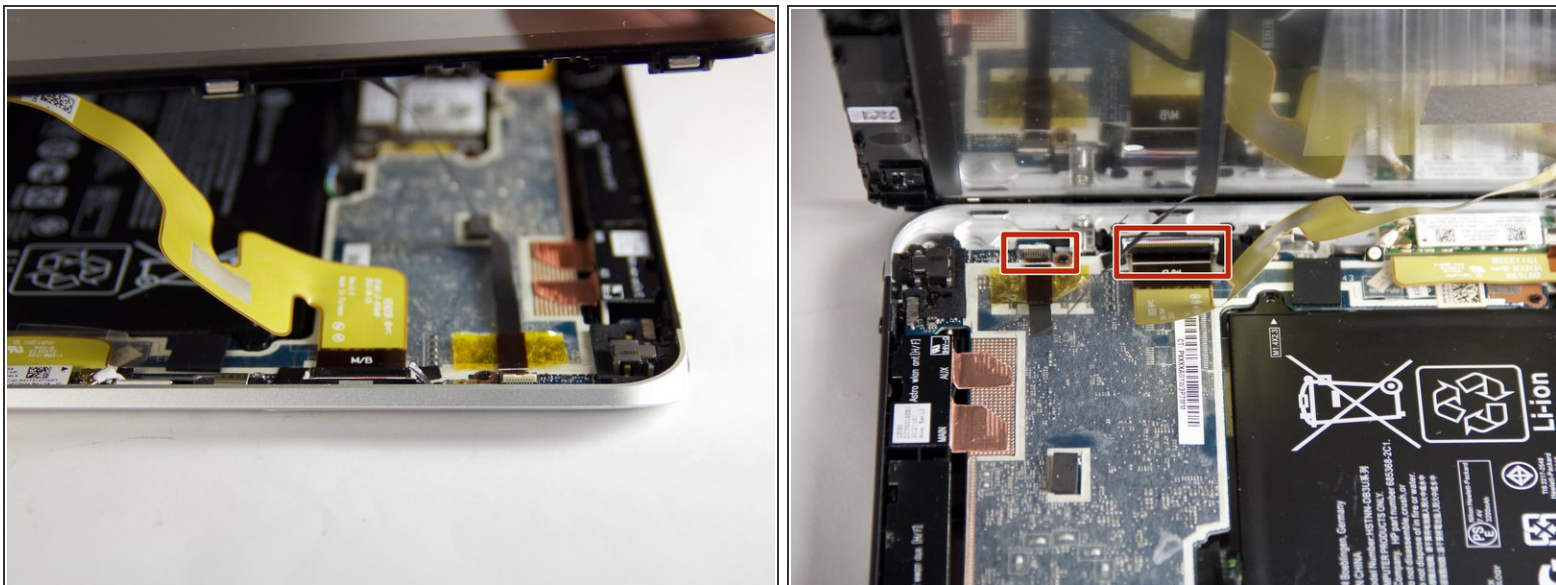
- Unscrew the two 2.8mm Phillips #000 screws near the power connector.

Step 2



- Use a suction cup to pull the display assembly up.

Step 3



- Use the tip of a spudger to disconnect the two display [ZIF connectors](#).

Step 4 — Speakers



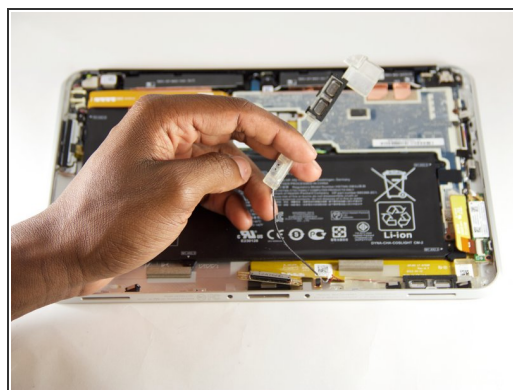
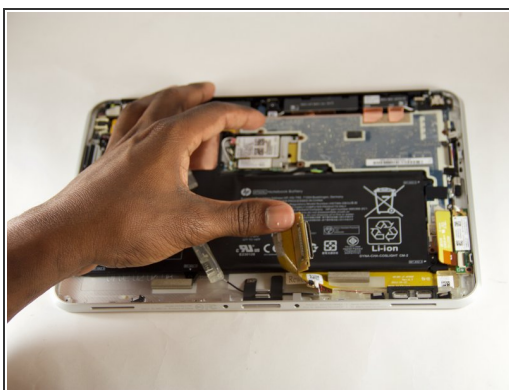
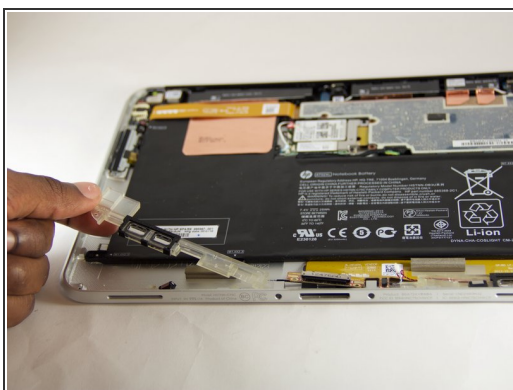
- Remove the eight 2.4mm Phillips #000 screws.

Step 5



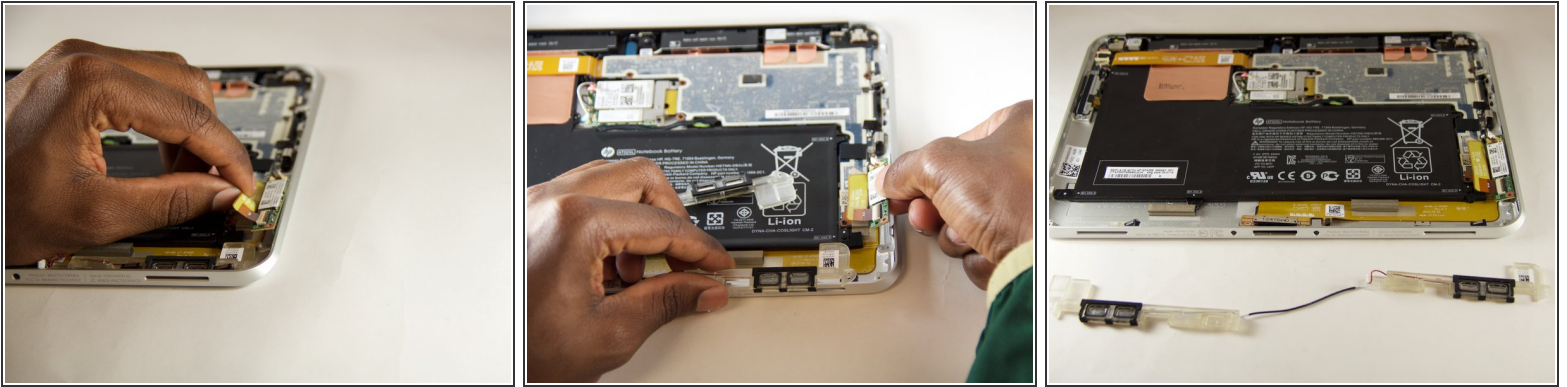
- Gently use tweezers to disconnect the indicator wire.

Step 6



- Lift the charging port over the left speaker.

Step 7



- Slightly lift the green PCB to slide out the right speaker.
- Replace the speakers.

To reassemble your device, follow these instructions in reverse order.