



# HP ElitePad 900 Volume Control Buttons Replacement

Replace the volume control buttons in your HP ElitePad 900.

Written By: Kyle Marques



# INTRODUCTION

Use this guide to replace the volume control buttons in your HP ElitePad 900.



## TOOLS:

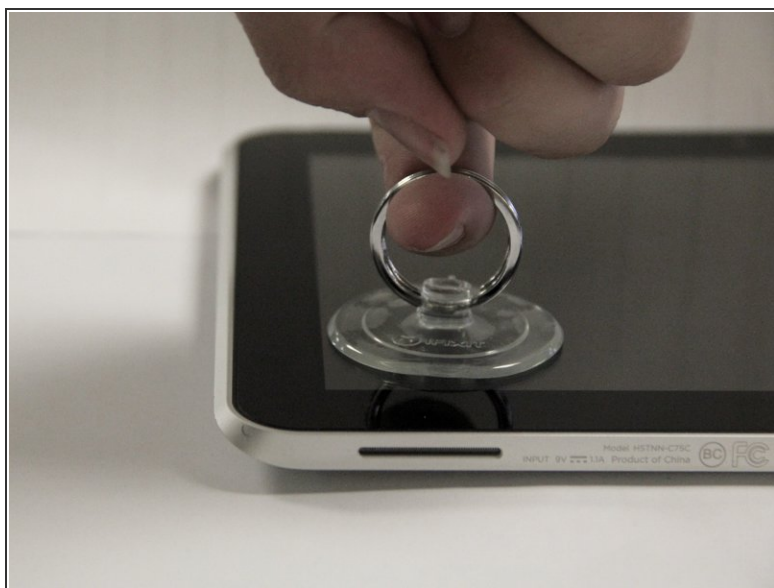
- [Phillips #000 Screwdriver](#) (1)
  - [iFixit Opening Tools](#) (1)
  - [Suction Handle](#) (1)
-

## Step 1 — Front Panel Assembly



- Unscrew the two 2.8mm Phillips #000 screws near the power connector.

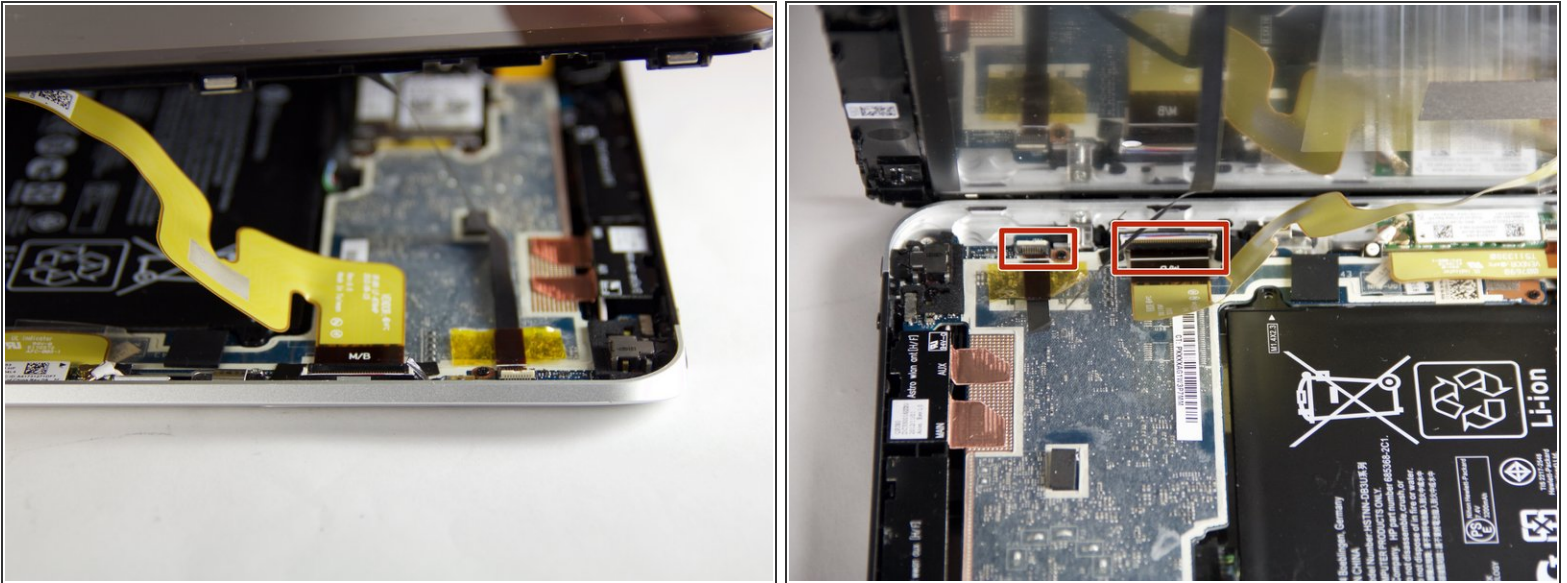
## Step 2



- Use a suction cup to pull the display assembly up.



### Step 3



- Use the tip of a spudger to disconnect the two display [ZIF connectors](#).

### Step 4 — Volume Control Buttons



- Remove the two 2.4mm Phillips #000 screws securing the volume control buttons to the the device.
- Lift silver panel
- Push buttons through and replace

To reassemble your device, follow these instructions in reverse order.