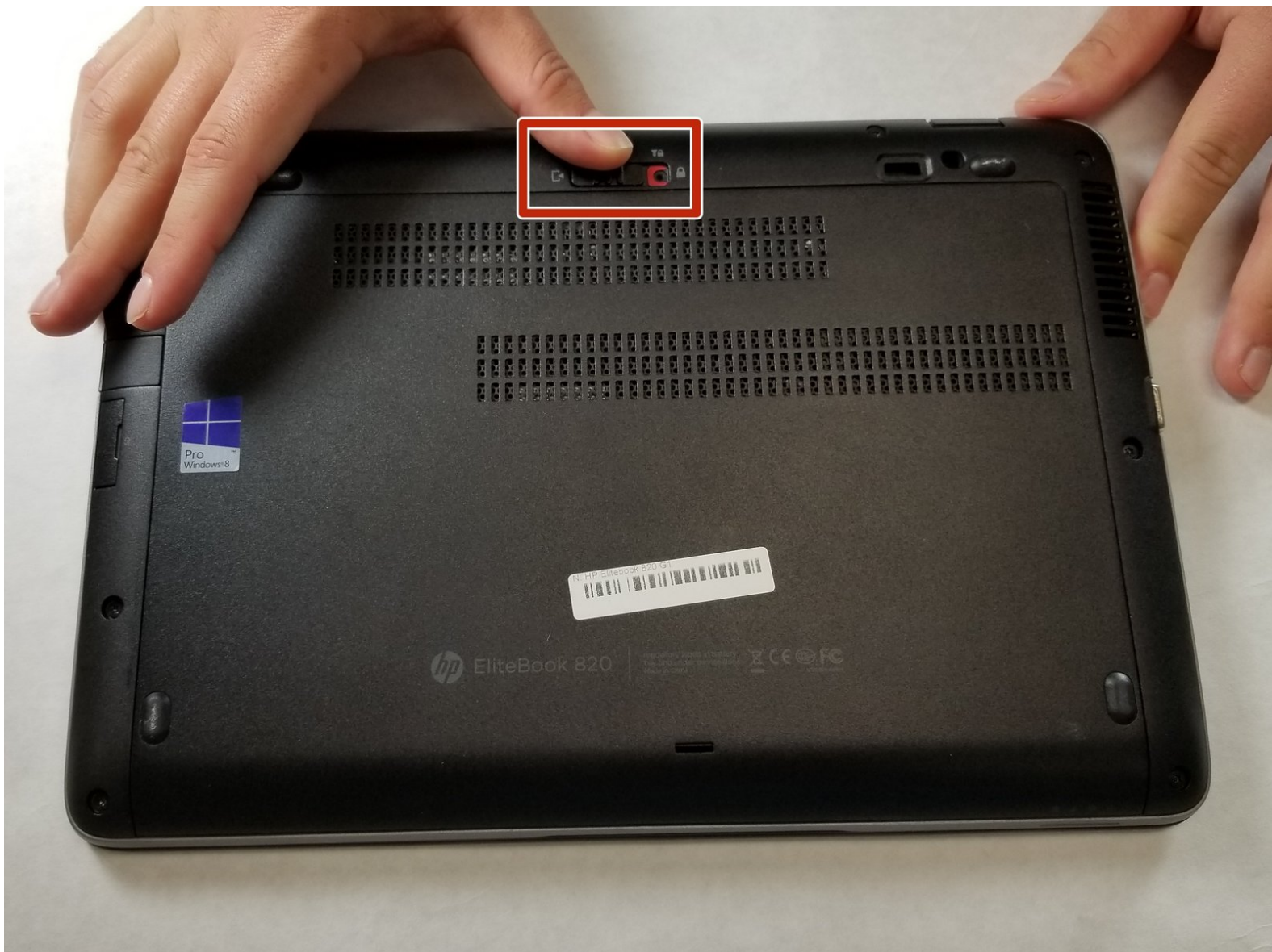




HP Elitebook 820 G1 Wi-Fi Card Replacement

This guide details how to replace the Wi-Fi card in an HP Elitebook 820 G1 laptop.

Written By: Lauren Vance



INTRODUCTION

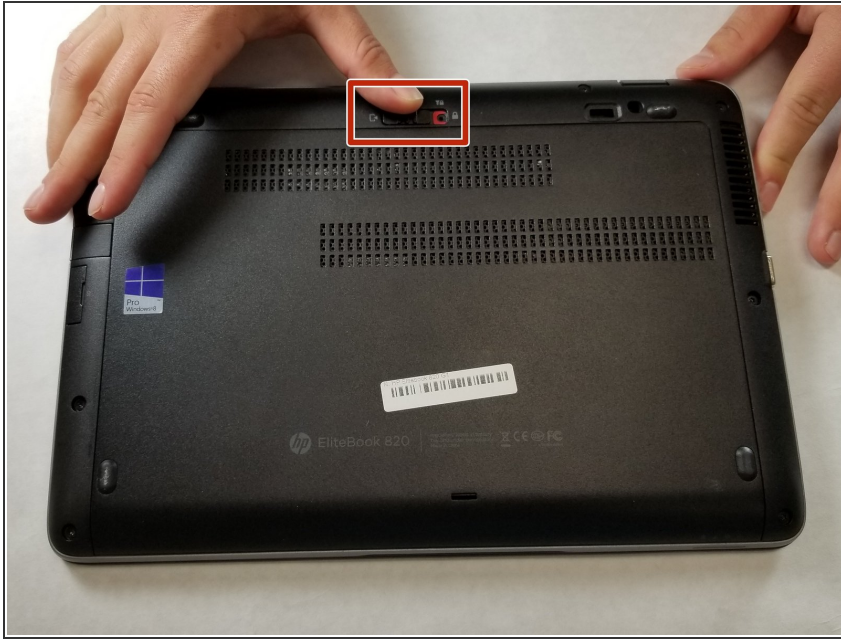
This guide demonstrates how to remove the Wi-Fi card. If the Wi-Fi card is not functioning properly, it can be removed and replaced.



TOOLS:

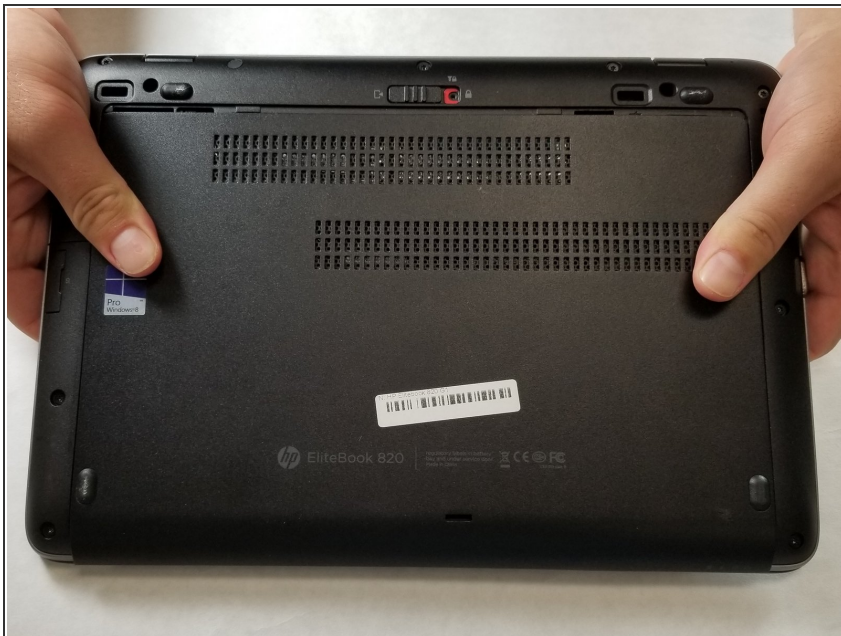
- [Phillips #0 Screwdriver](#) (1)
-

Step 1 — Wi-Fi Card



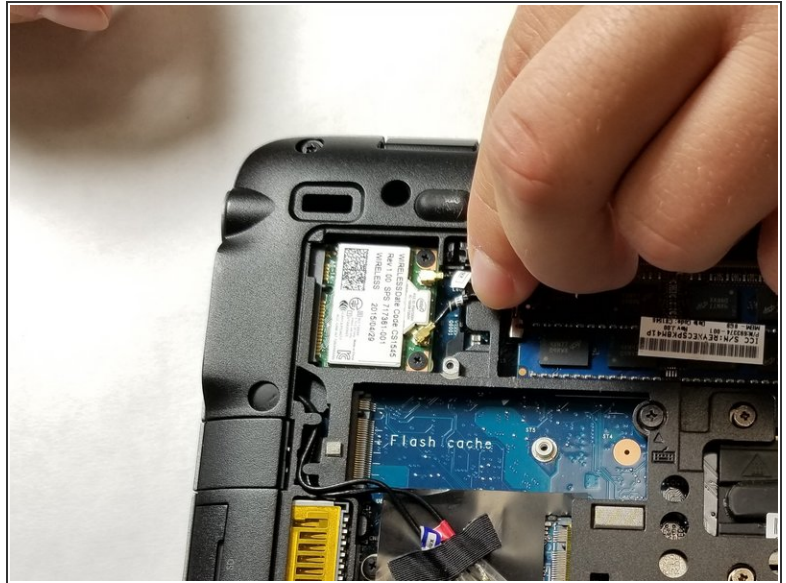
- Slide the latch to unlock the back cover.

Step 2



- Slide the back cover plate forward to remove it.

Step 3



- Detach the two antenna leads by gently lifting them.

Step 4



- Remove the two 2.36 mm Phillips #0 screws securing the wireless card to the case.

Step 5



- Pull back the Wi-Fi card and lift up to remove it.

To reassemble your device, follow these instructions in reverse order.