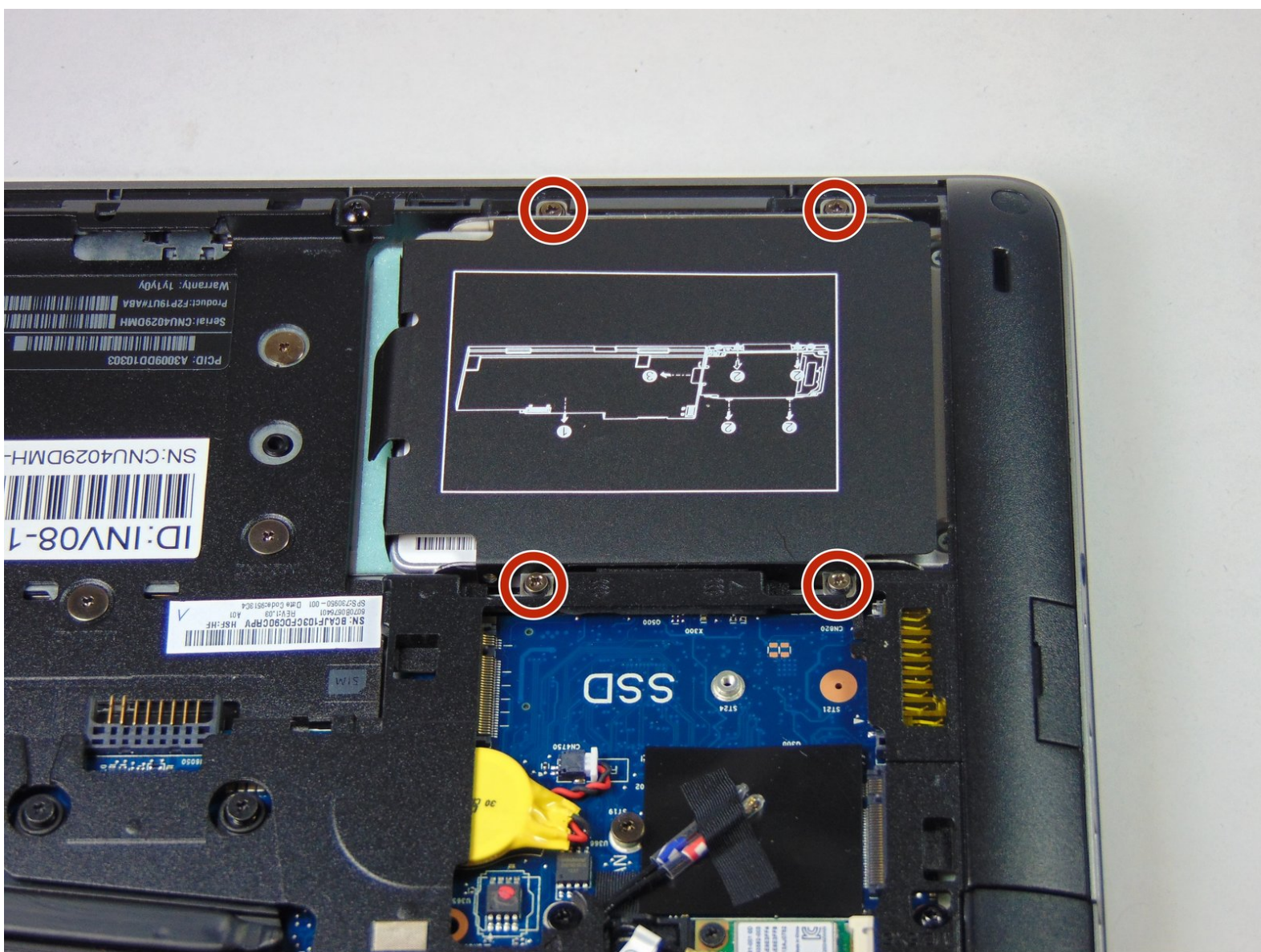




HP Elitebook 840 G1 Hard Drive Replacement

Did your hard drive crash or are you looking for more speed or capacity from a new hard drive?
This guide will walk you through replacing your hard drive.

Written By: Ashley Williams



INTRODUCTION

If the blue screen of death occurs as well as strange noises emanating from the hard drive occur, replace the faulty or failing hard drive in your HP Elitebook 840 G1.



TOOLS:

- [Phillips #1 Screwdriver](#) (1)




PARTS:

- [1 TB SSD / Upgrade Bundle](#) (1)
- [250 GB SSD / Upgrade Bundle](#) (1)
- [500 GB SSD / Upgrade Bundle](#) (1)
- [2 TB SSD / Upgrade Bundle](#) (1)

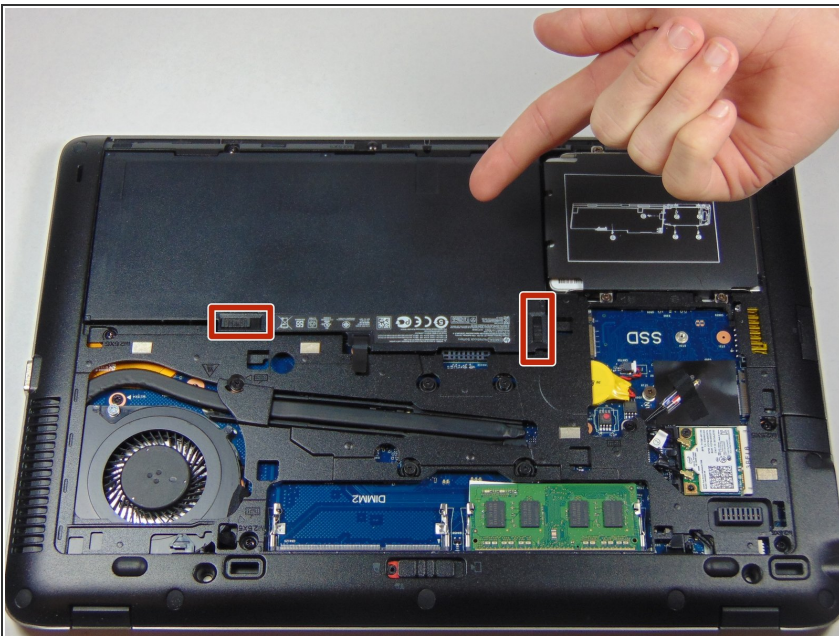
Step 1 — Battery



 Working on your device while it is turned on may result in electric shock. Make sure to shut down and unplug your device before you begin.

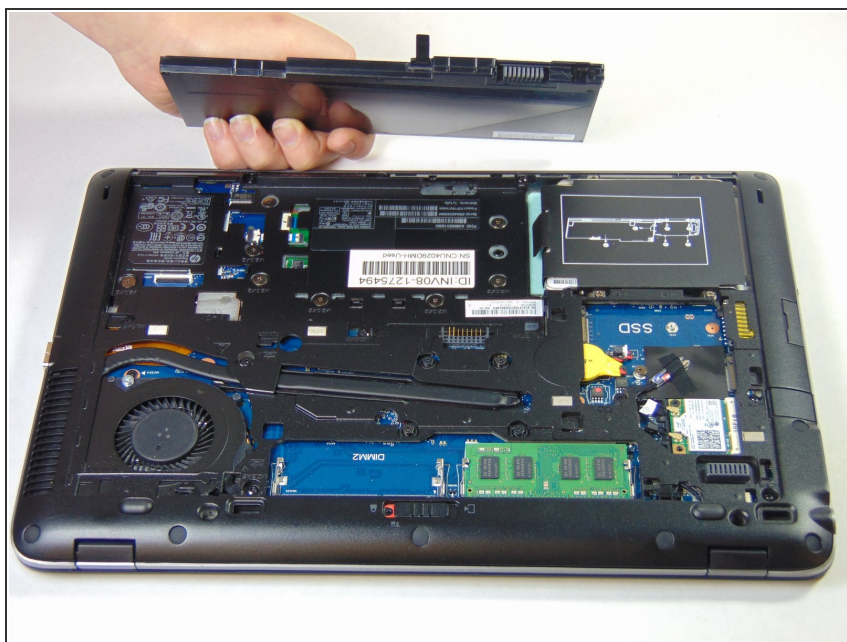
- Slide the latch, to the right, away from the lock symbol.
- Slide the cover away from the latch to remove it.

Step 2



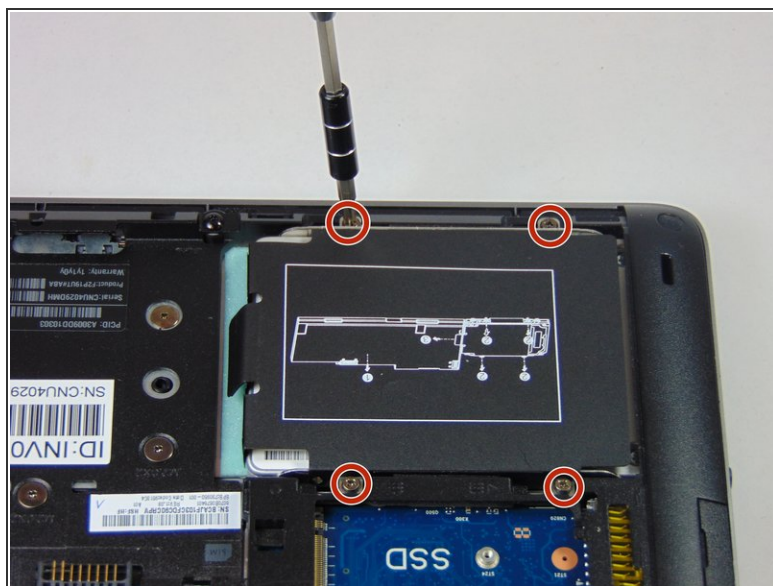
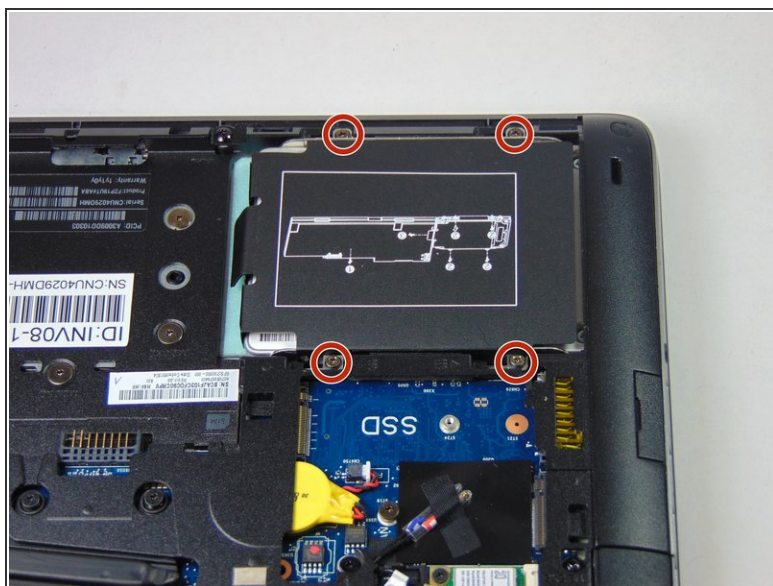
- Once the cover is removed you will be able to see the battery and the two latches that hold it in place.
- The two latches should be pulled back, one of which is spring loaded and must be held in place in order to remove the battery.

Step 3



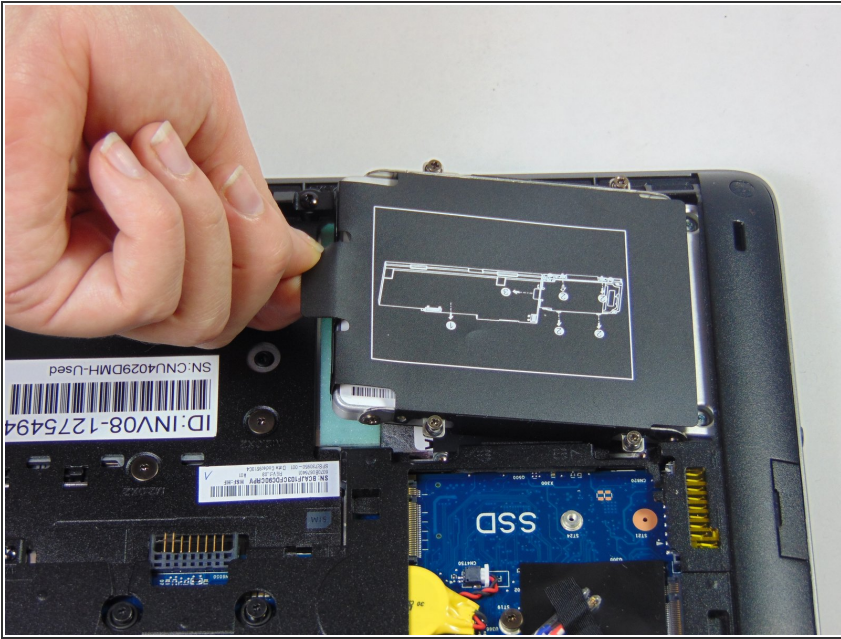
- Battery should easily be lifted up and out.

Step 4 — Hard Drive



- Loosen the four Phillips screws securing the hard drive.
- ⓘ These screws will stay captive to the plastic hard drive bracket.

Step 5



- Grab the pull tab on the hard drives plastic casing and pull it out and to the side.
- ⚠ Make sure all screws have been properly loosened and are no longer connected at the bottom before doing this step.
- Remove the 2.5" hard drive from the plastic bracket.

To reassemble your device, follow these instructions in reverse order.