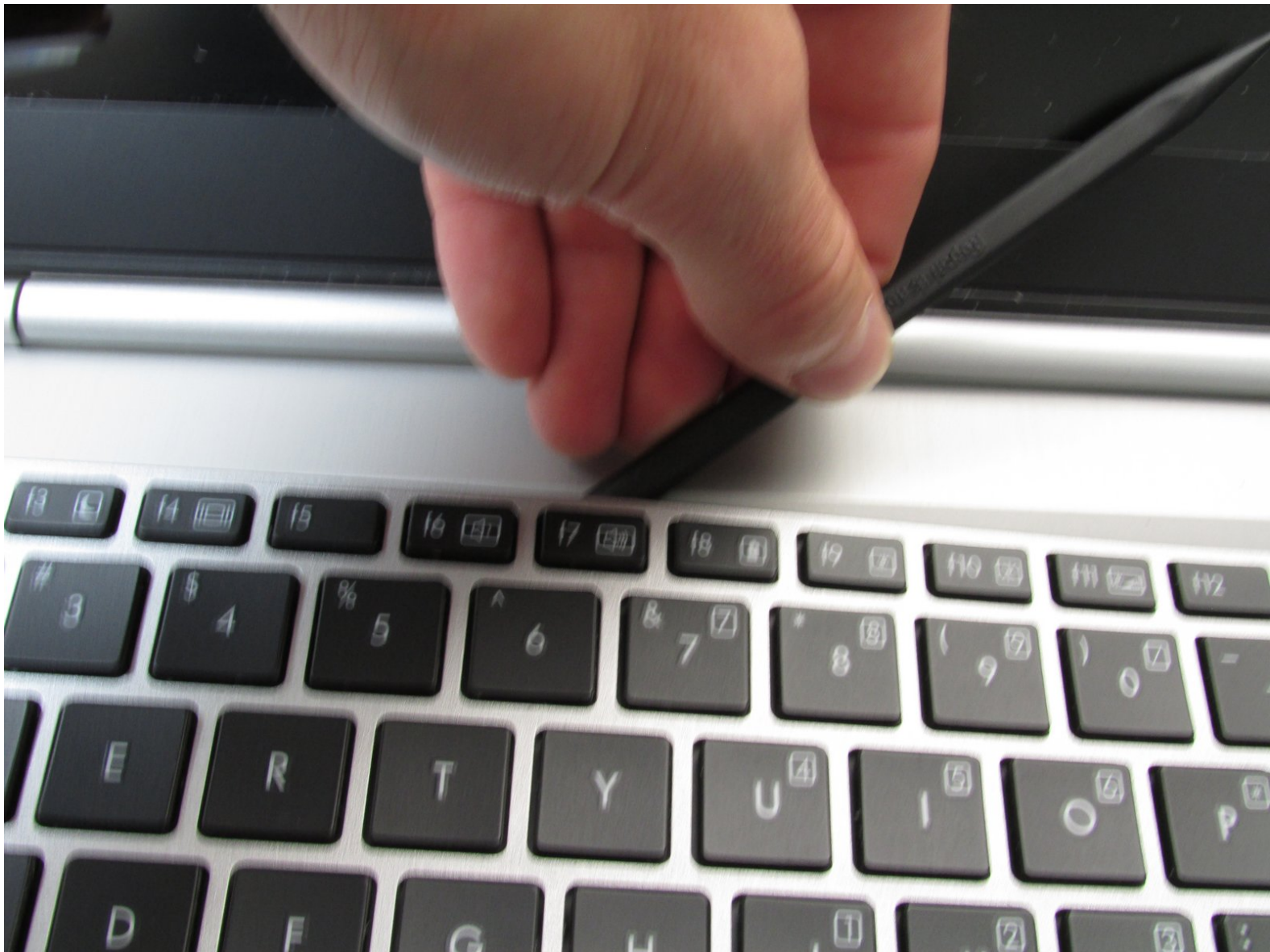




HP Elitebook 8460p Keyboard Replacement

Use this guide to replace the keyboard in your HP Elitebook 8460p.

Written By: Garrett Anderson



INTRODUCTION

If the keyboard is bad or malfunctioning, use this guide to replace the keyboard or check the keyboard connections on the inside of the laptop.

This guide requires a bit of prying to unsnap the keyboard from the laptop chassis. Following the instructions, pry carefully and do not force anything to avoid breaking any components.

The keyboard has two electrical connectors that attach to the motherboard. Before touching the connectors, make sure you are properly grounded to avoid damaging the motherboard itself.

To complete this guide you will need a Phillips #0 screw driver; an ESD strap; and a thin, sturdy plastic pry tool.



TOOLS:

- [Phillips #0 Screwdriver](#) (1)
- [Spudger](#) (1)



PARTS:

- [Laptop Keyboard](#) (1)

Step 1 — Battery



- On the back of the computer, slide the left switch towards the outside of the laptop until you hear a click.

Step 2



- Slide the battery away from the switches until it can be lifted away from the laptop.
- Lift the battery away from the laptop.

Step 3 — Back Panel



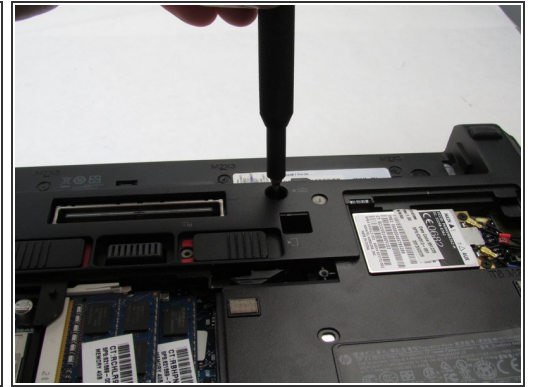
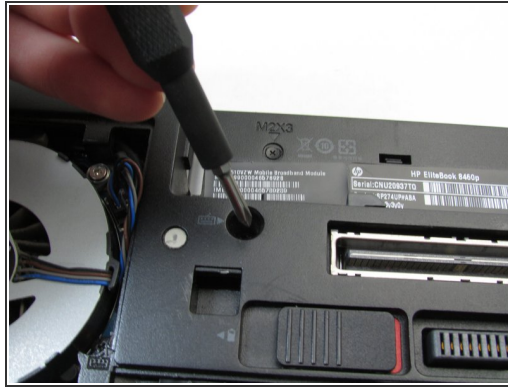
- On the back of the laptop, slide the right switch toward the outside of the laptop until you hear a click.

Step 4



- Slide the back shell of the laptop away from the switches until it can be lifted up.
- Lift the shell straight up.

Step 5 — Keyboard



⚠ Attach ESD strap around your wrist and to a ground.

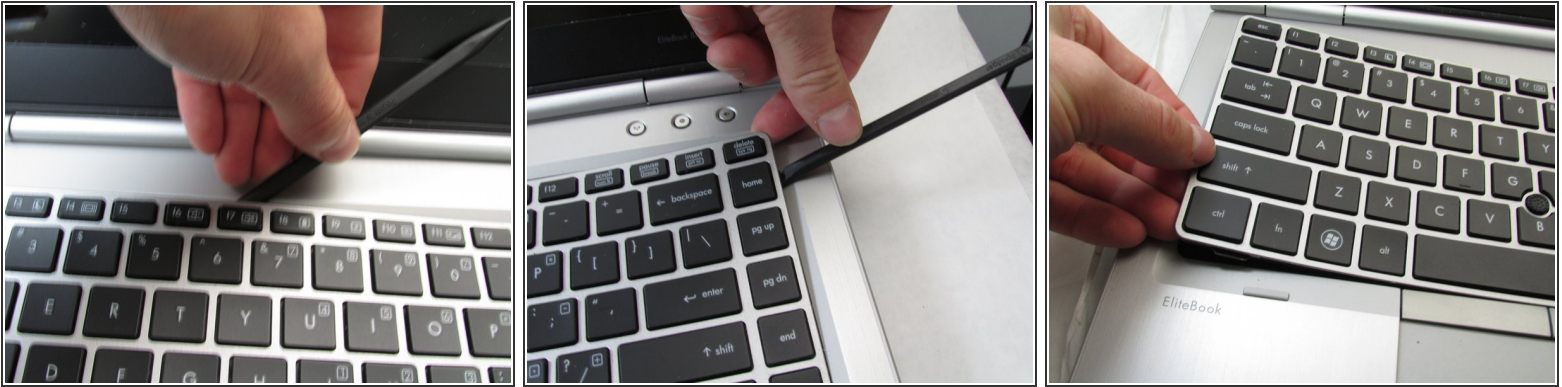
- Using a Phillips #0 bit, unscrew the two screws in front of the battery slot located on the bottom of the laptop.

Step 6



- Flip the laptop over and open the screen.

Step 7



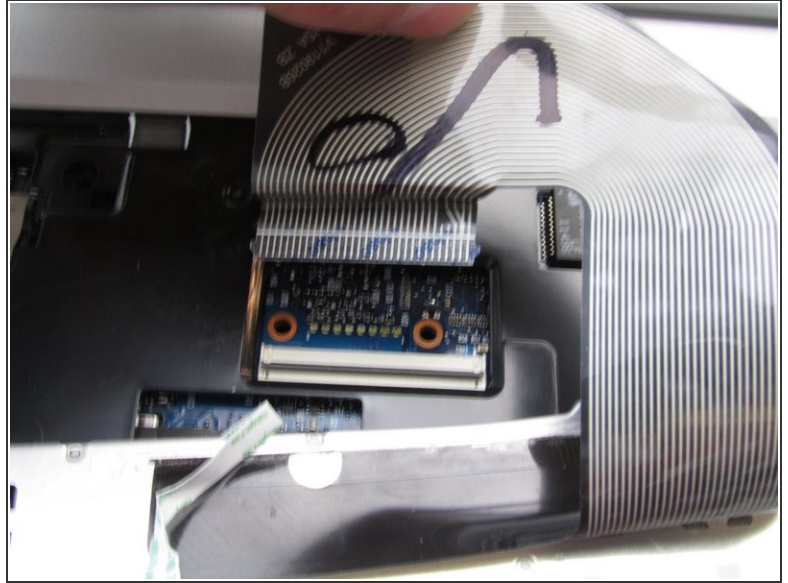
- Using a spudger, work around the edge of the keyboard and pry it up from the device.

Step 8



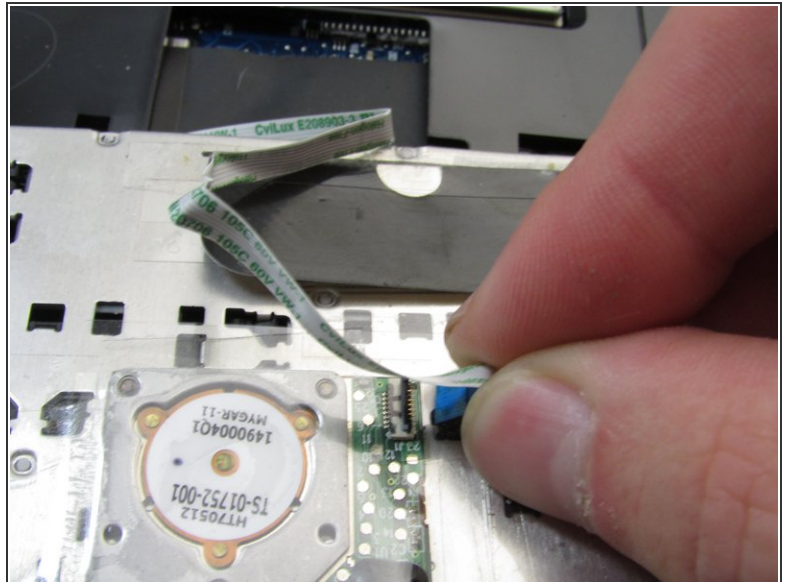
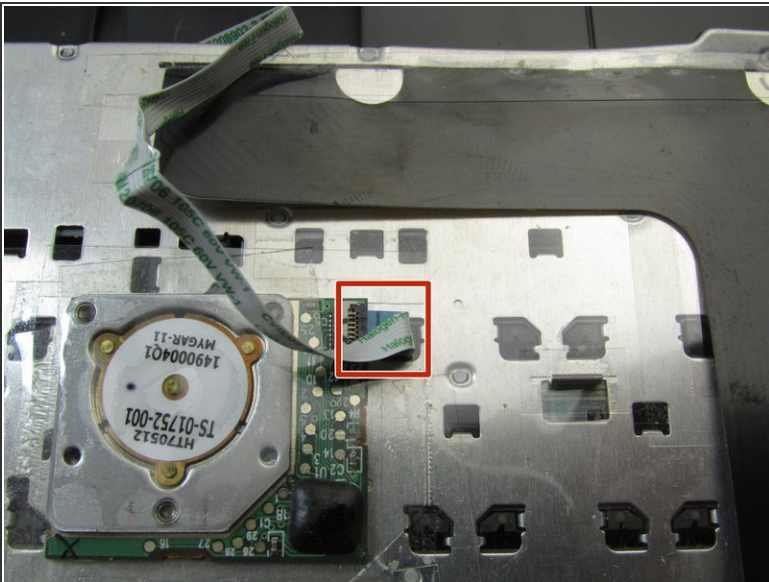
- Lift the keyboard out of the laptop and flip it over.
- ⓘ This exposes two different connectors. Both need to be detached in order to remove the keyboard. The larger connector is the main keyboard cable.

Step 9



- Disconnect the keyboard cable on the laptop using a thin pry tool to open the connection.
- ❗ Open the connection by inserting a thin plastic pry tool under the black tab in the connector and flipping it up.

Step 10



- Using the spudger again, disconnect the thin ribbon strip on the back of the keyboard.

To reassemble your device, follow these instructions in reverse order.