



HP Elitebook 8570w Display Replacement

A guide to removing and replacing the display of a HP Elitebook 8570w.

Written By: MJ Routh



INTRODUCTION

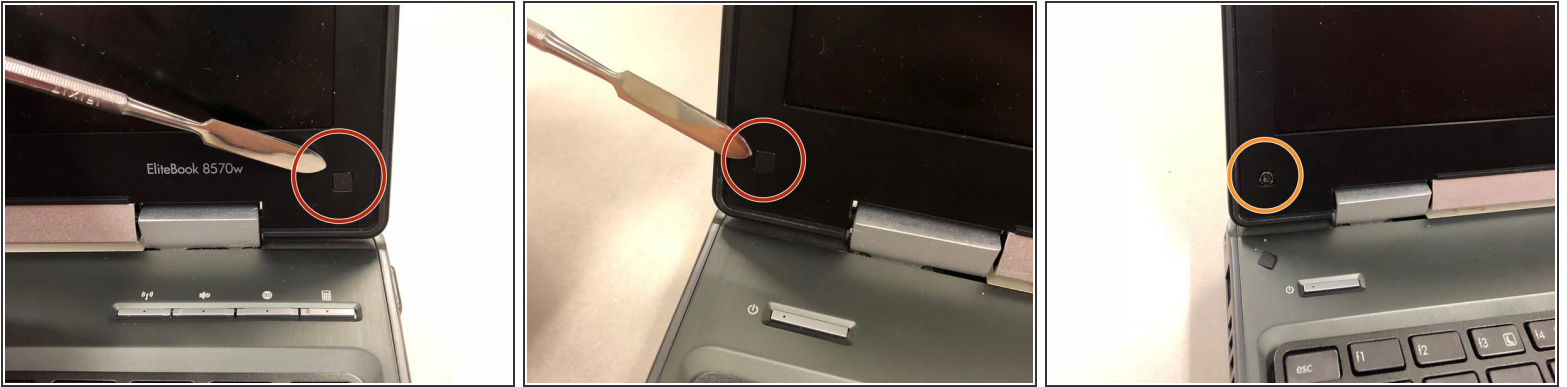
This replacement guide will show you how to disconnect the display from your HP EliteBook 8570w. It consists of 7 moderately difficult steps that should guide you successfully.



TOOLS:

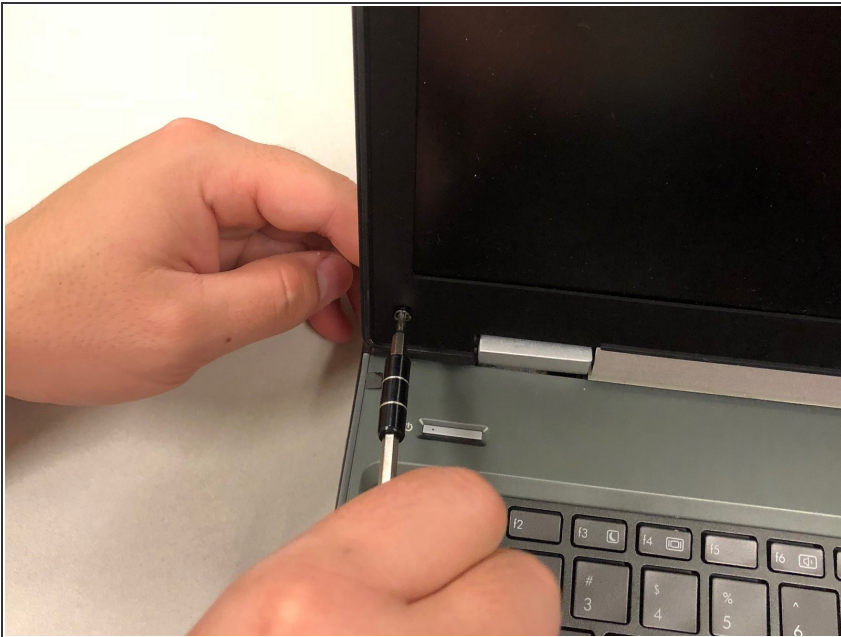
- [T9 Torx Screwdriver](#) (1)
 - [Metal Spudger](#) (1)
 - [iFixit Opening Tools](#) (1)
 - [Phillips #00 Screwdriver](#) (1)
-

Step 1 — Display



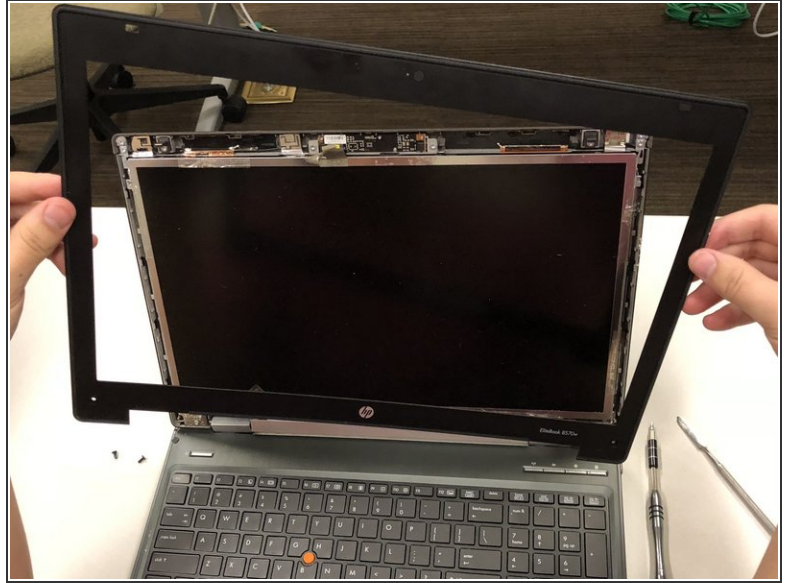
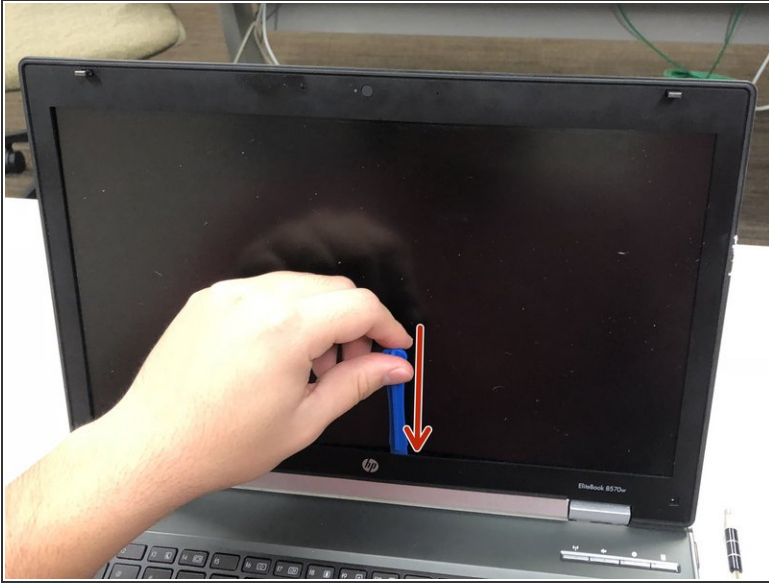
- With the computer opened, locate the square buttons on both bottom corners of the display.
- Using a tool or finger, wedge the squares off revealing a screw on each corner.

Step 2



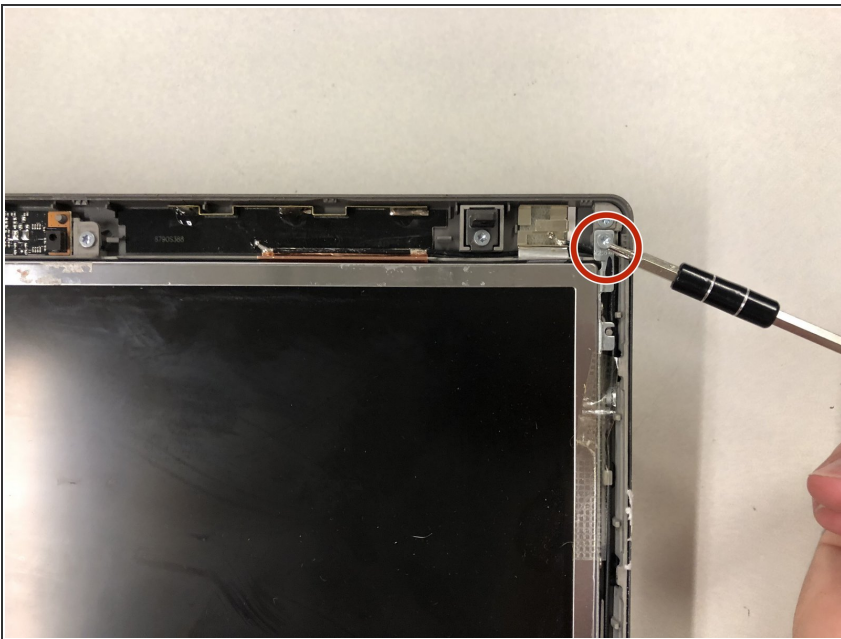
- Use a T9 screwdriver to unscrew both 0.4mm Torx screws.

Step 3



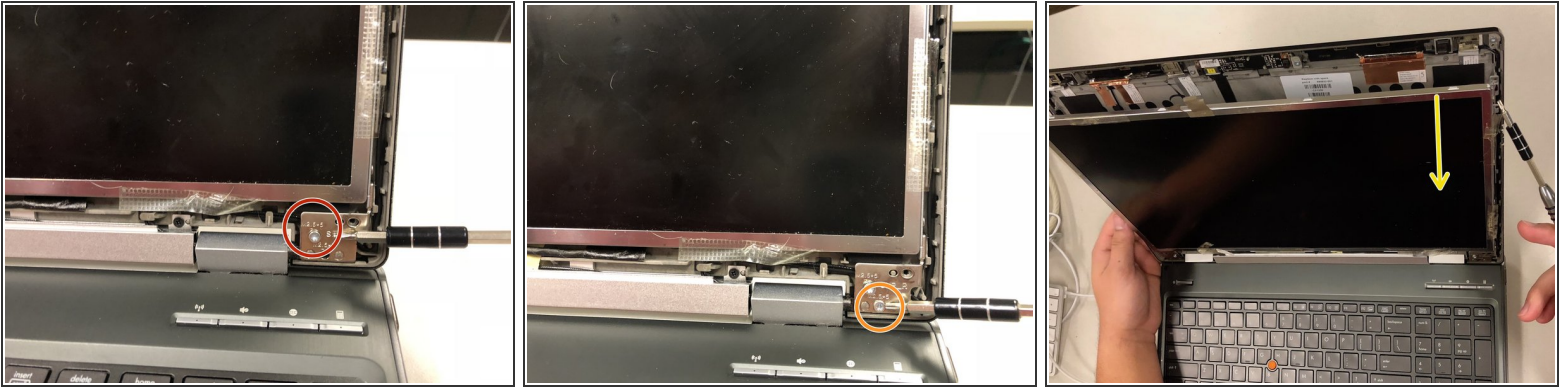
- Use an opening tool or spudger to peel back the outer rim of the display.
- Continue to peel back the entire rim.

Step 4



- Unscrew ONLY the bottom 0.8mm T9 Torx screw on both sides of the display.

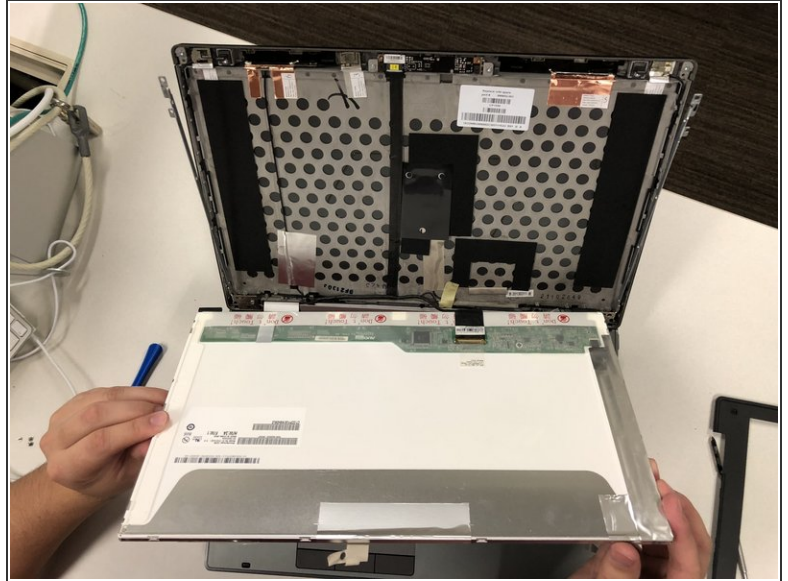
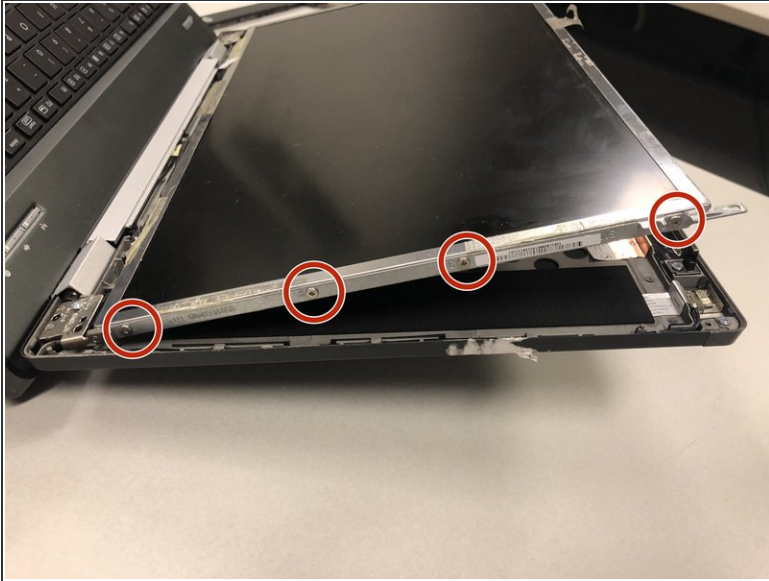
Step 5



- Now locate the two screws on each side at the bottom of the display.
 - TOP screw: unscrew partially.
 - BOTTOM screw: completely unscrew and set to the side.
- Complete on both sides of display.
- Carefully separate the display from the top cover.

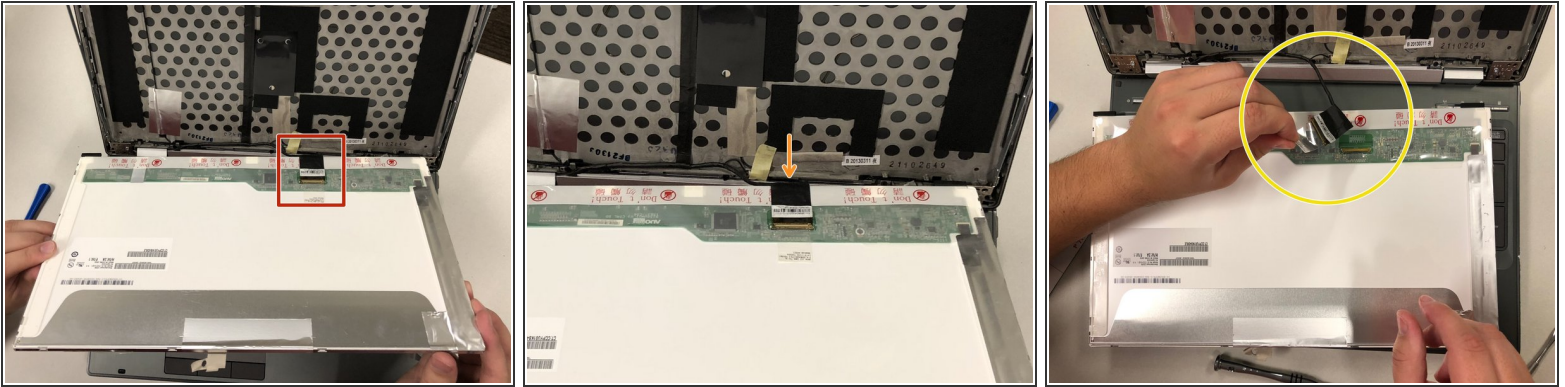
 **Be sure to not let the top cover fall back**

Step 6



- Use a Phillips #00 screwdriver to unscrew all four 0.8 mm screws from the left side of the display frame. Repeat for the right side.
- Push the metal plates/rods that were attached to the display towards the top cover.
- The display should be completely free of the top cover and able to lay flat on the keyboard (refer to photo #2).

Step 7



- With the display laying on the keyboard, locate the black square panel marked in the photo.
- Grab the side marked in photo #2 and pull it towards you peeling off the surrounding tape and releasing it from the actual display board.
- This will then remove the connection between the display and the top cover.

To reassemble your device, follow these instructions in reverse order.