



# HP Elitebook Folio 9470m WiFi Card Replacement

Replacing the Wifi card in an HP Elitebook Folio 9470m.

Written By: Kenneth Bowers



---

## INTRODUCTION

A Wifi card allows you to connect to the Internet without a cable . If your HP Elitebook Folio 9470m Wifi card needs to be replaced, follow the instructions below.

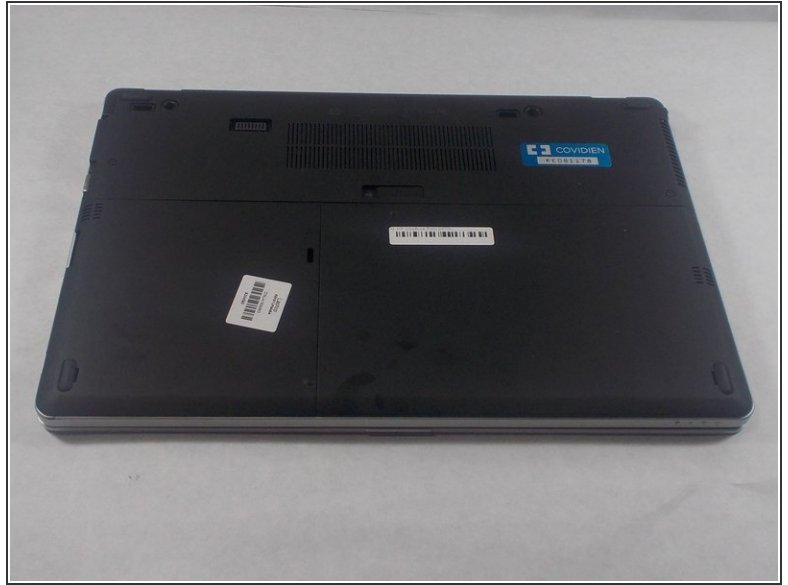
---



### TOOLS:

- [Phillips #0 Screwdriver](#) (1)
  - [iFixit Opening Tools](#) (1)
-

## Step 1 — WiFi Card



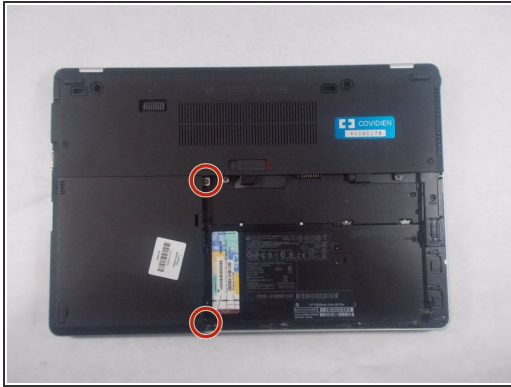
- Flip laptop over.

## Step 2



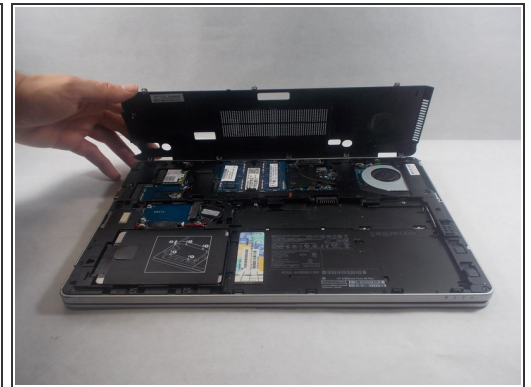
- Remove battery using [This](#) guide.

## Step 3



- Unscrew the 2 Phillips screws to remove the hard drive plate.

## Step 4



- Unscrew the 3 Phillips screws to remove the back plate by slightly lifting up and pulling out.

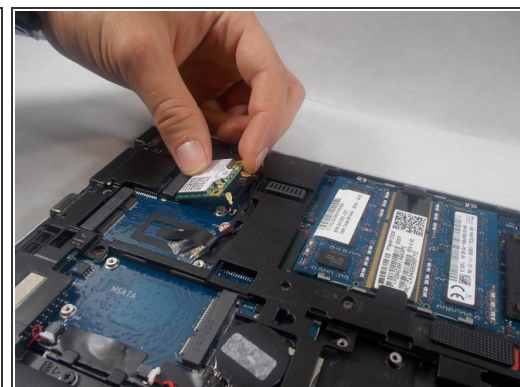
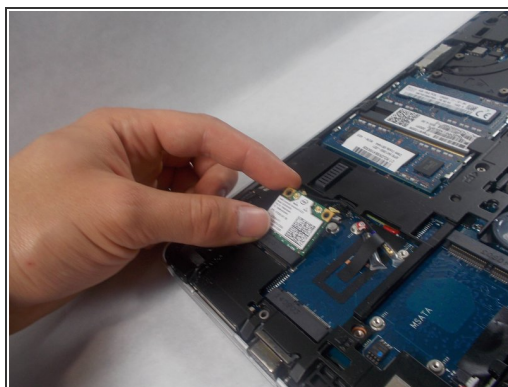


## Step 5



- Slowly but firmly pull off the small connector on the right side.

## Step 6



- Unscrew the top Phillips screw and gently lift up and out to remove it.

To reassemble your device, follow these instructions in reverse order.