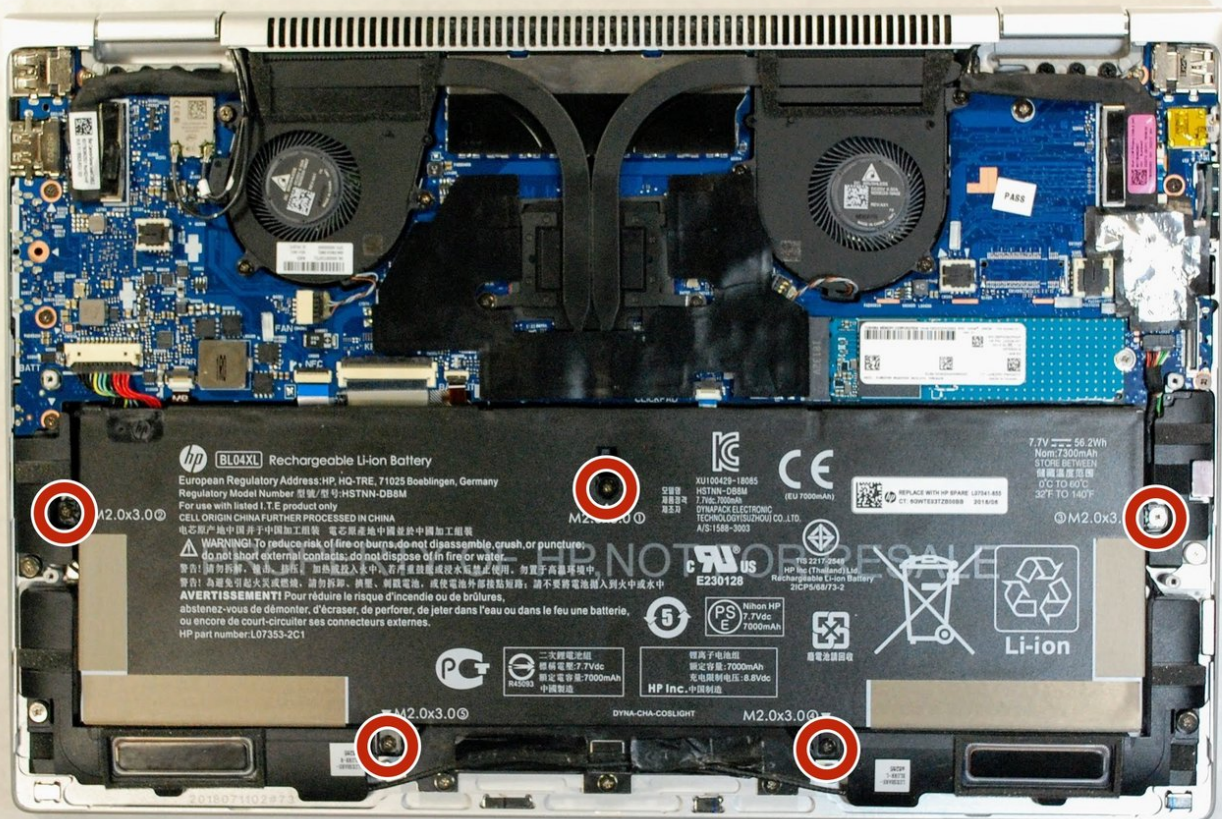




HP Elitebook x360 1040 G5 Battery Replacement

If your issues cannot be fixed with other troubleshooting methods, this guide will help you replace the battery for the HP Elitebook x360 1040 G5.

Written By: Corey Agena



INTRODUCTION

Use this guide if you are experiencing difficulty with your battery, especially if your laptop is over five years old. If the battery does not fully charge or your computer only turns on when plugged in, it may be time to replace your battery. This guide provides detailed instructions to replace your laptop's battery.




TOOLS:

- [T5 Torx Screwdriver](#) (1)
- [Magnetic Project Mat](#) (1)
- [Metal Spudger](#) (1)
- [iFixit Precision Bit Driver](#) (1)
- [Phillips #1 Screwdriver](#) (1)

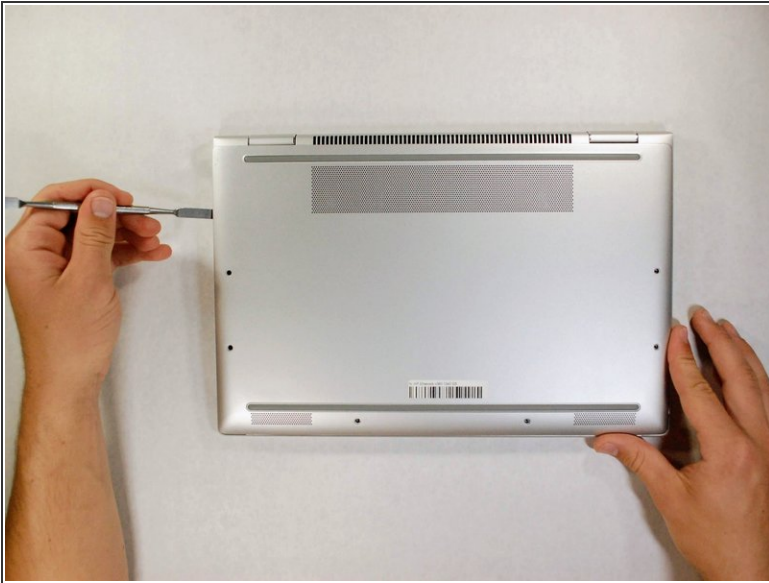
Step 1 — Lower Case



 Power off device before disassembly.

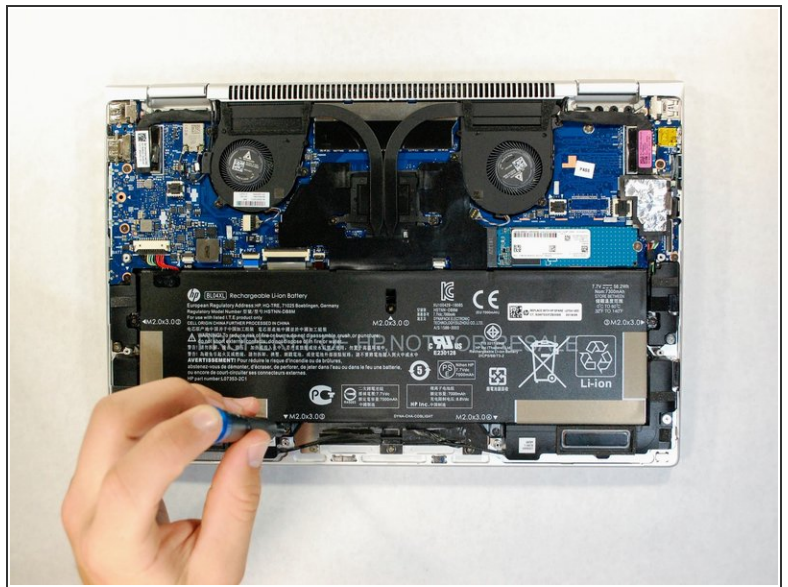
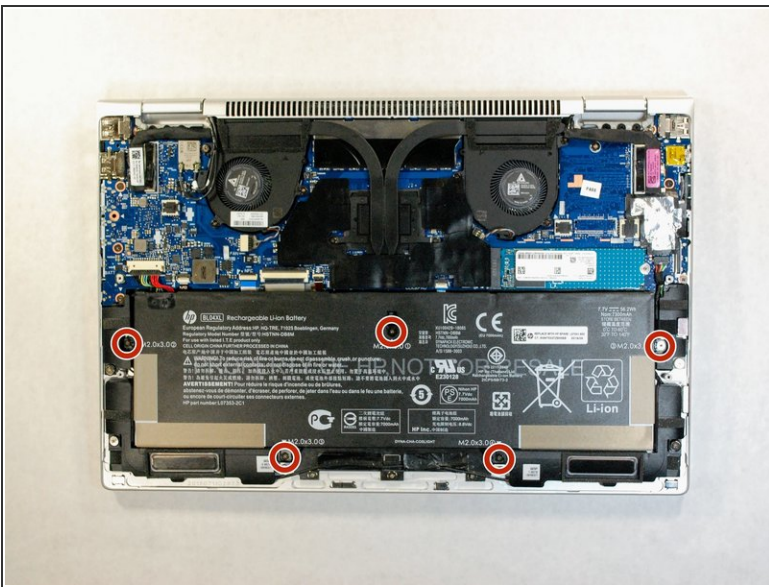
- Use the T5 Torx screwdriver to remove the six 4 mm screws from the underside of the laptop using iFixit's 64 Bit Driver Handle and a T5 Torx screwdriver head.

Step 2



- Pry open the lower case from where it meets the laptop base using iFixit's Metal Spudger.
- Remove the lower case from the work area.

Step 3 — Battery



- Use the Phillips 1 screwdriver to remove the five 3mm Phillips screws from the battery assembly.

Step 4



- Carefully remove the power supply connector by pulling on both sides of its head.
- ⚠ Do not tug on the wires as they may become damaged.
- Lift the battery from its position, removing it from the device.

To reassemble your device, follow these instructions in reverse order.