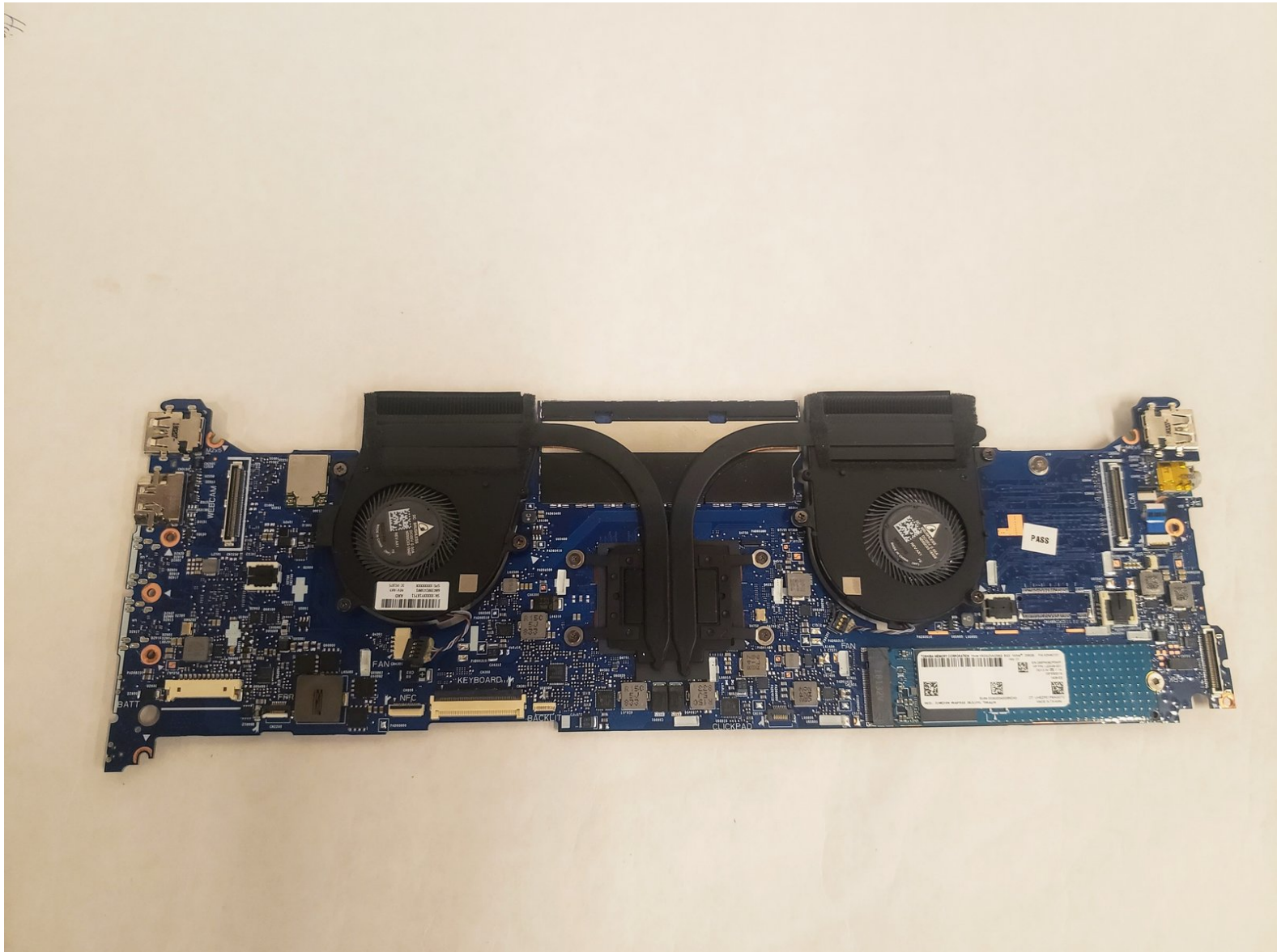




HP Elitebook x360 1040 G5 Motherboard Replacement

How to replace the motherboard on a HP Elitebook x360 1040 G5

Written By: Tyler A Cobb



INTRODUCTION

If your HP Elitebook x360 1040 G5 is damaged badly enough, it may be time for a new motherboard. In order to start this guide, the steps from the lower case replacement guide and battery replacement guide must be completed. This skills required to complete the steps in this guide are used to complete the prerequisite guides. However, caution should be exercise when removing and reinserting ribbon cables. They can be damaged easily.




TOOLS:

- [iFixit Precision Bit Driver](#) (1)
 - [Magnetic Project Mat](#) (1)
 - [Metal Spudger](#) (1)
 - [T5 Torx Screwdriver](#) (1)
 - [Phillips #1 Screwdriver](#) (1)
 - [Small Plastic Spudger](#) (1)
 - [iFixit Opening Tool](#) (1)
-

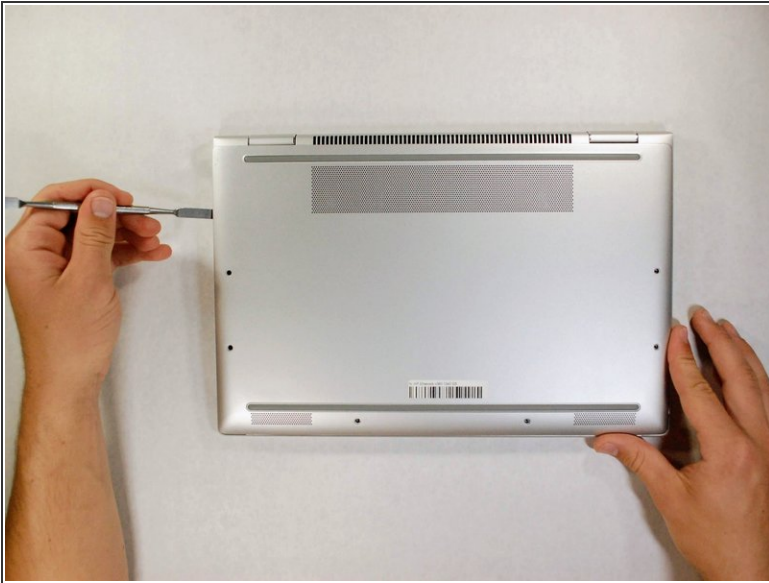
Step 1 — Lower Case



 Power off device before disassembly.

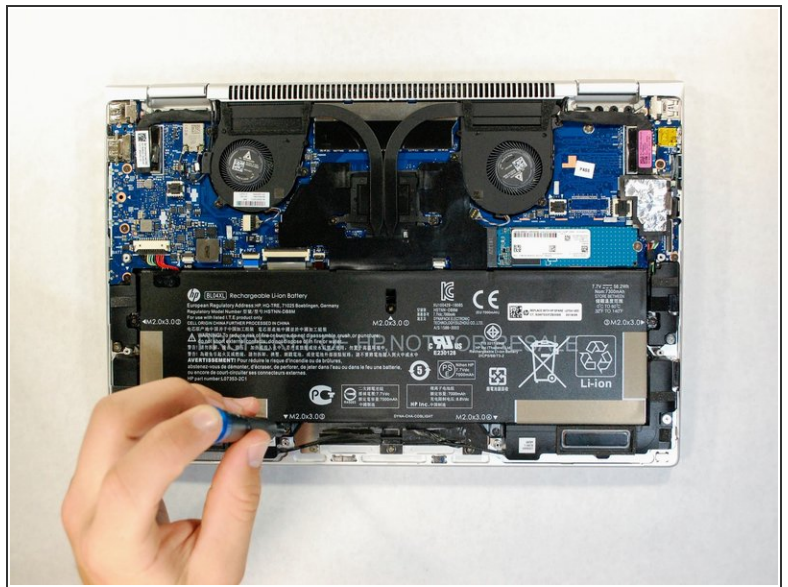
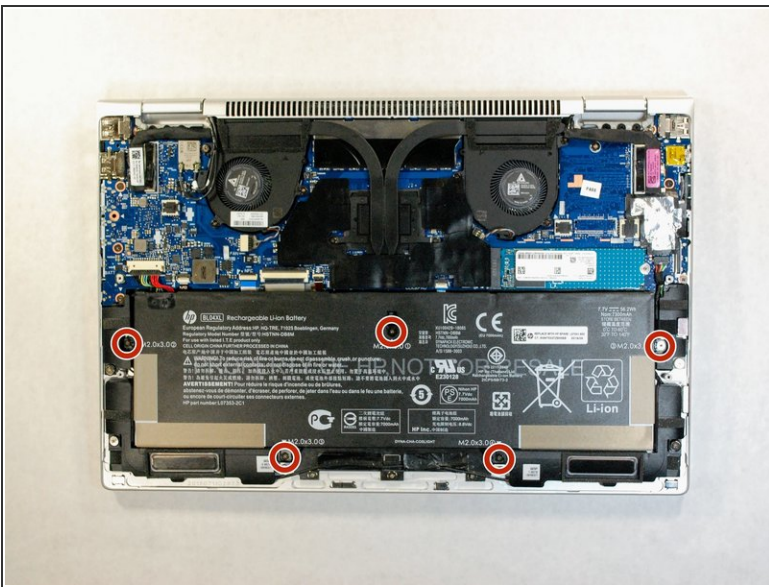
- Use the T5 Torx screwdriver to remove the six 4 mm screws from the underside of the laptop using iFixit's 64 Bit Driver Handle and a T5 Torx screwdriver head.

Step 2



- Pry open the lower case from where it meets the laptop base using iFixit's Metal Spudger.
- Remove the lower case from the work area.

Step 3 — Battery



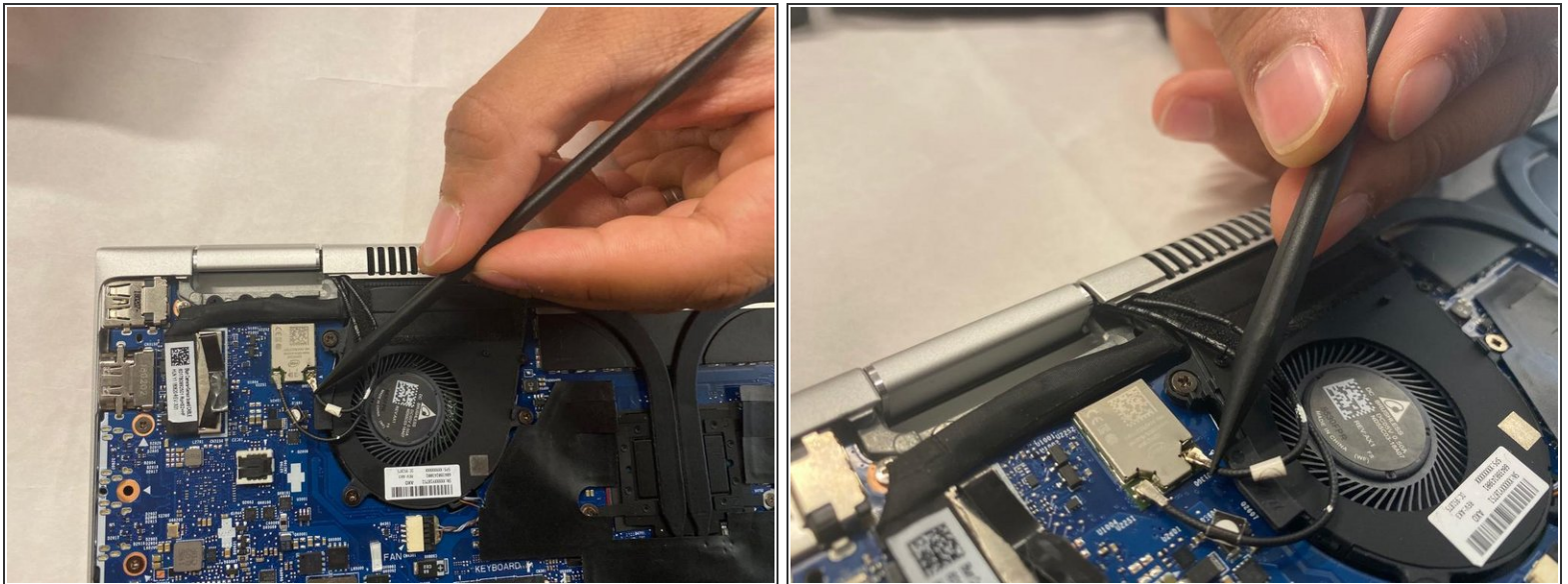
- Use the Phillips 1 screwdriver to remove the five 3mm Phillips screws from the battery assembly.

Step 4



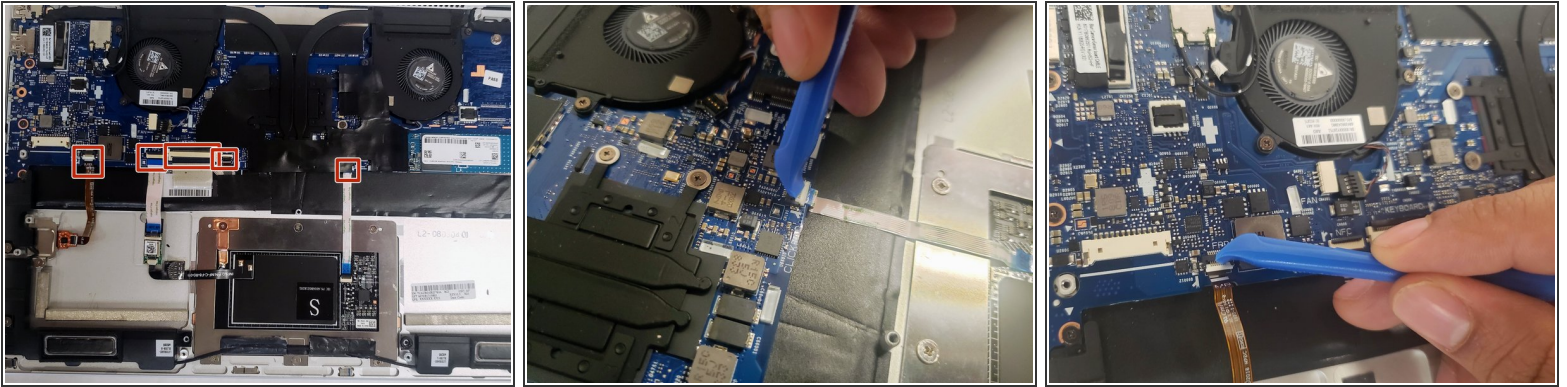
- Carefully remove the power supply connector by pulling on both sides of its head.
- ⚠ Do not tug on the wires as they may become damaged.
- Lift the battery from its position, removing it from the device.

Step 5 — Motherboard



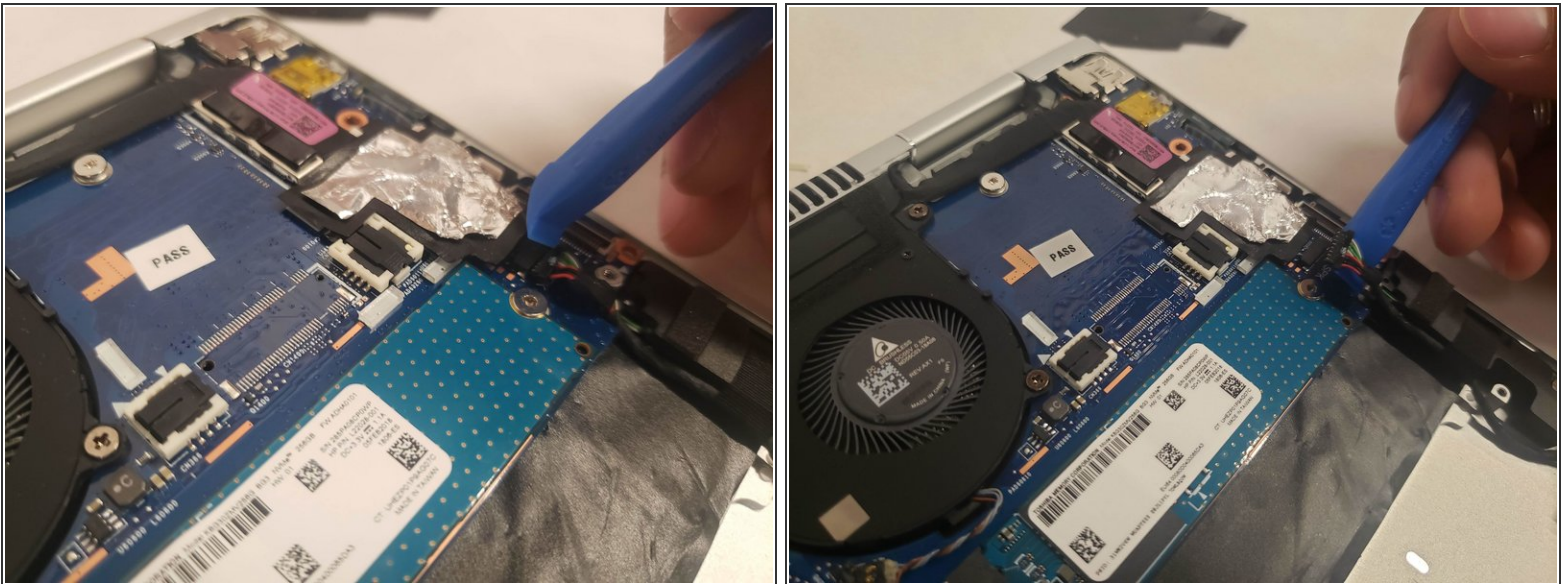
- With the battery removed, begin by removing the two coaxial connectors located near the hinge using an ESD-safe spudger.
- To do this, slide the tip of the spudger under the wire until it is snug against the connector. Then, pry straight up from the board.

Step 6



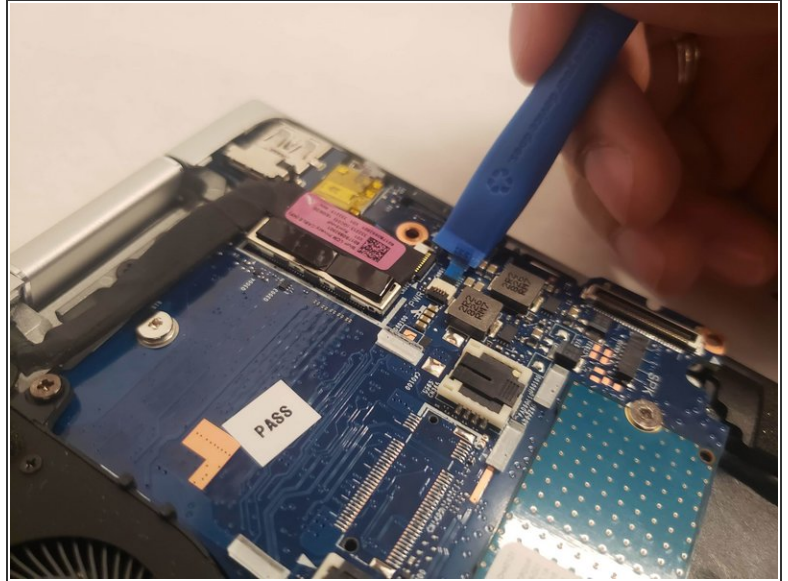
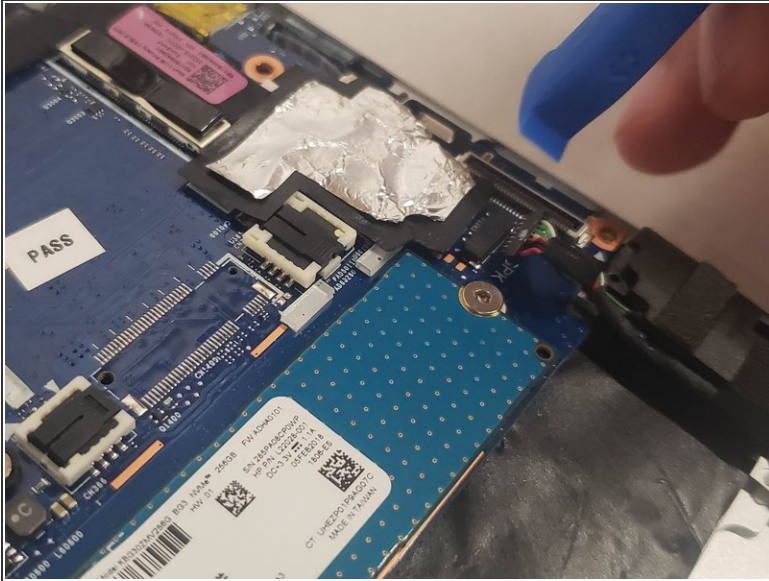
- Remove the three white and two brown ribbon cables located on the bottom of the motherboard.
- Use a spudger to carefully push on each side of the connector in order to release the cable.

Step 7



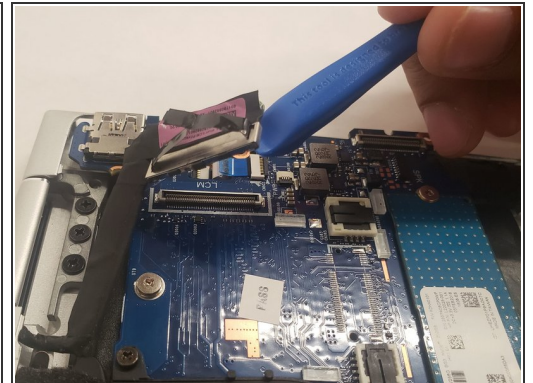
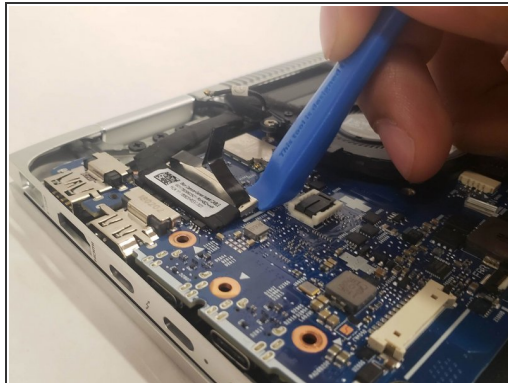
- Remove sliding connector located near the bottom right corner of the motherboard.
- Gently push on each side of the connector using a spudger until it is free.

Step 8



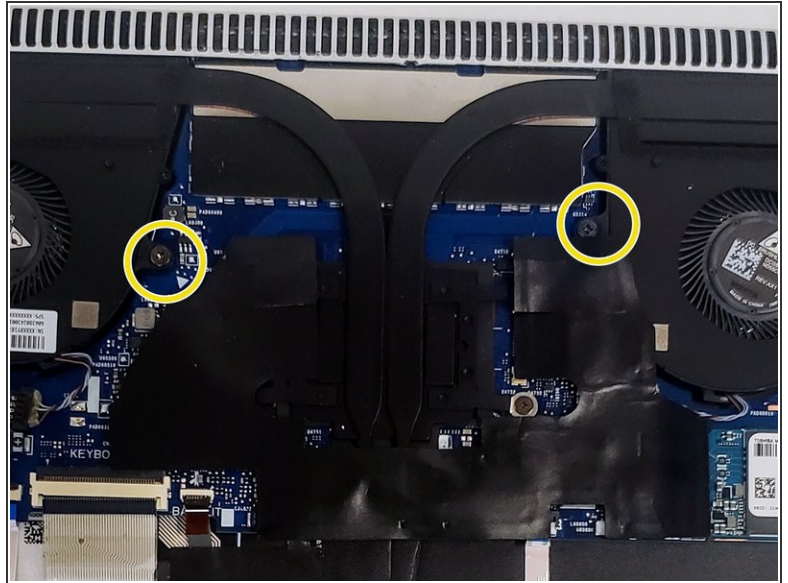
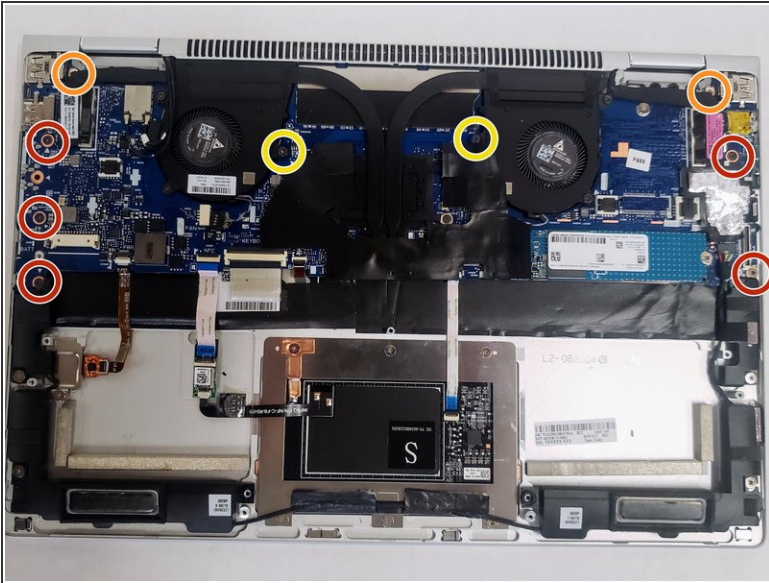
- Remove the foil protector from the right side of the motherboard by gently peeling it back with the opening tool.
- Remove the ribbon connector underneath using the spudger.

Step 9



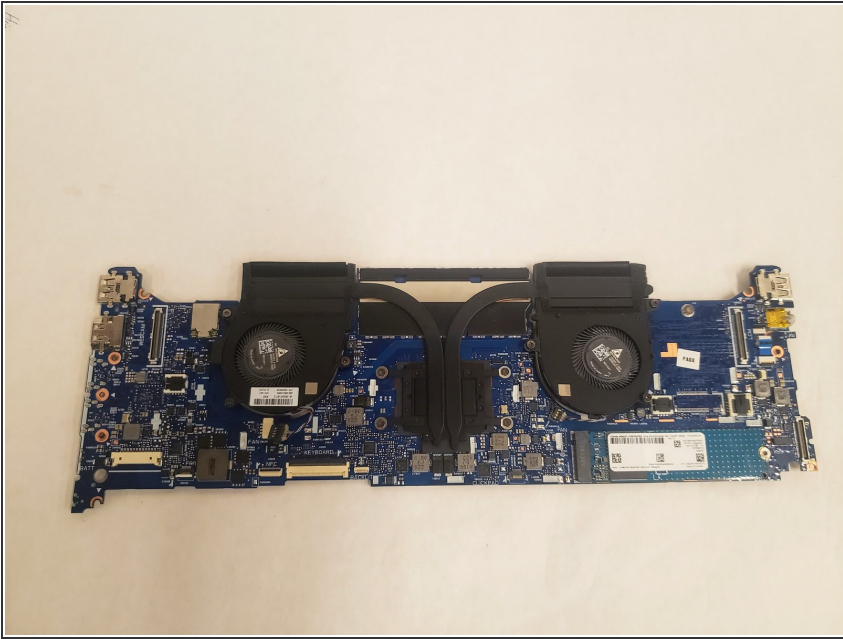
- Remove the two flat connectors located on both sides of the motherboard near the fans.
- Gently pry the connector straight up from the motherboard using a spudger or opening tool.

Step 10



- Remove the five M2 X 3mm screws from the perimeter of the motherboard using the Phillips #1 screwdriver.
- Remove the two M2 X 5mm screws from the upper corners of the motherboard using the Phillips #1 screwdriver.
- Finally, remove the two interior M2 X 3mm screws from the motherboard's cooling system.

Step 11



- Lift the motherboard carefully from the computer shell. The motherboard can now be replaced.

To reassemble your device, follow these instructions in reverse order.