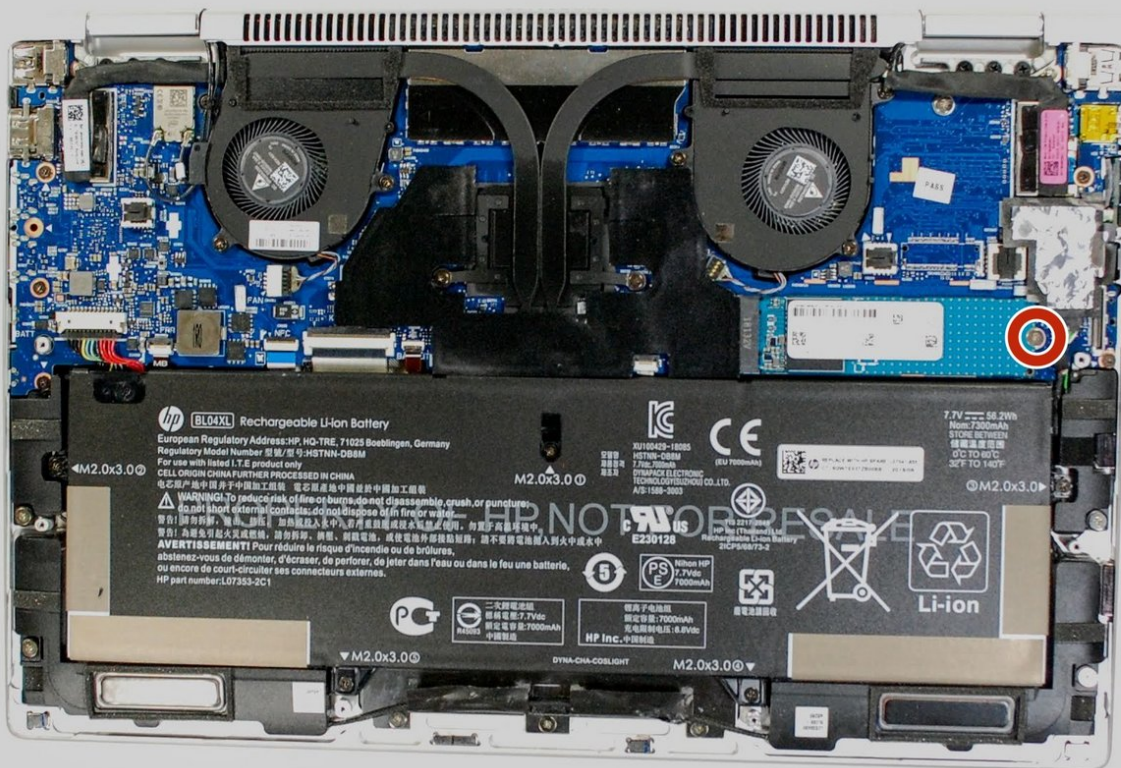




HP Elitebook x360 1040 G5 SSD Replacement

If your issues cannot be fixed with other troubleshooting methods, this guide will help you replace the SSD for the HP Elitebook x360 1040 G5.

Written By: Corey Agena



INTRODUCTION

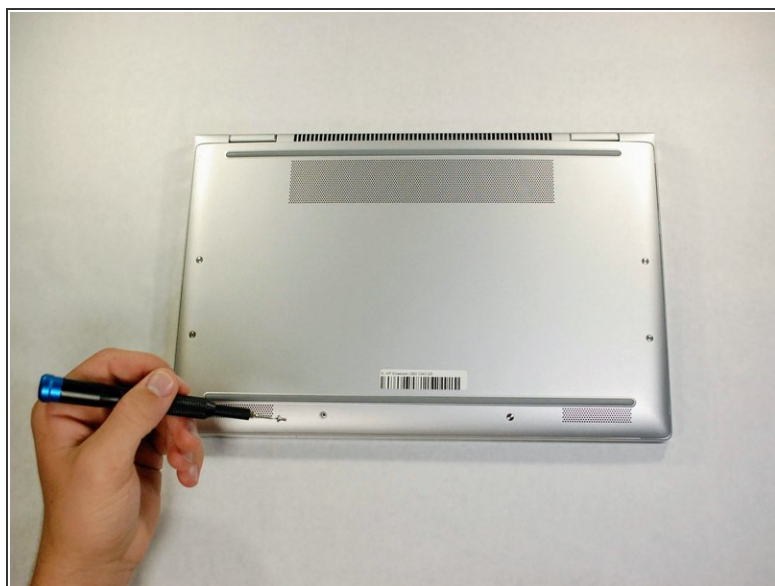
This guide provides instructions to help you replace your SSD in case there is an issue and you want to upgrade or replace it. The SSD is a solid state drive that stores accessible memory on your device.




TOOLS:

- [T5 Torx Screwdriver](#) (1)
 - [Magnetic Project Mat](#) (1)
 - [Metal Spudger](#) (1)
 - [iFixit Precision Bit Driver](#) (1)
-

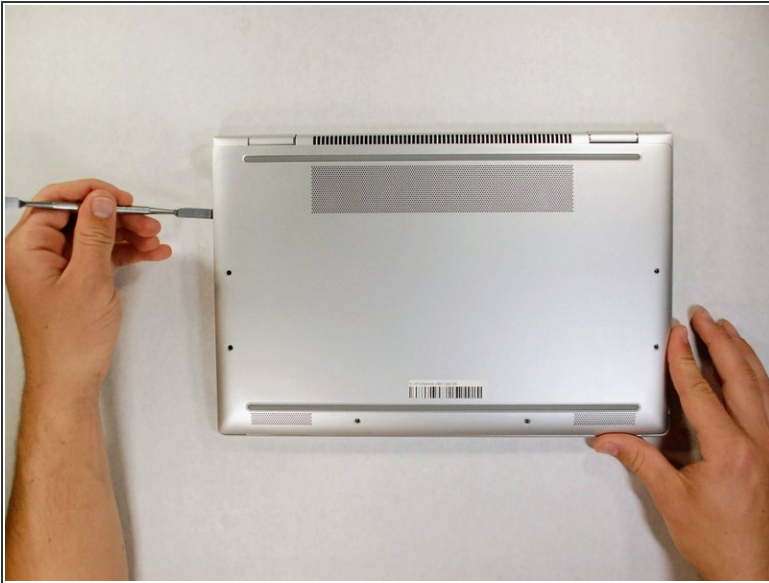
Step 1 — Lower Case



 Power off device before disassembly.

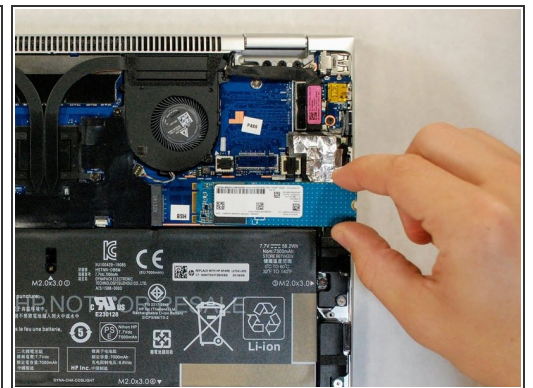
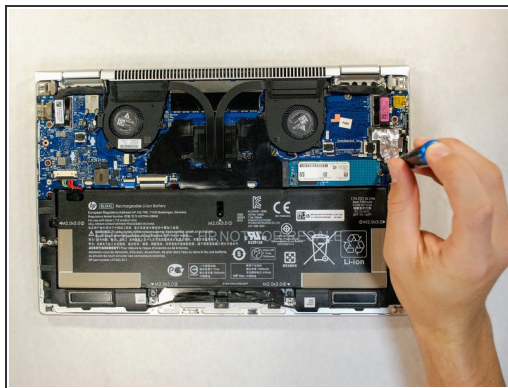
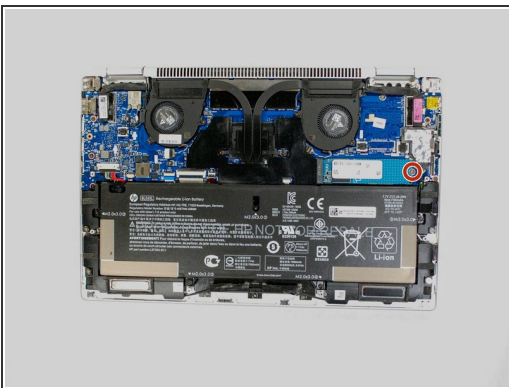
- Use the T5 Torx screwdriver to remove the six 4 mm screws from the underside of the laptop using iFixit's 64 Bit Driver Handle and a T5 Torx screwdriver head.

Step 2



- Pry open the lower case from where it meets the laptop base using iFixit's Metal Spudger.
- Remove the lower case from the work area.

Step 3 — SSD



- Use the Phillips 0 screwdriver to remove the 2mm Phillips screws from the SSD assembly.
- Gently slide the SSD to the right and pull out to remove it from its position within the motherboard.

To reassemble your device, follow these instructions in reverse order.