



HP Envy 15-u001dx Chassis Replacement

This guide will demonstrate how to access and replace the chassis of the HP Envy 15-u001dx.

Written By: Samuel Olubakinde



INTRODUCTION

If your HP envy 15 laptop (model u001dx) has a broken or displaced chassis, use this guide to replace the chassis (also known as frame).

The chassis is a metal case that houses the circuit boards and wiring.

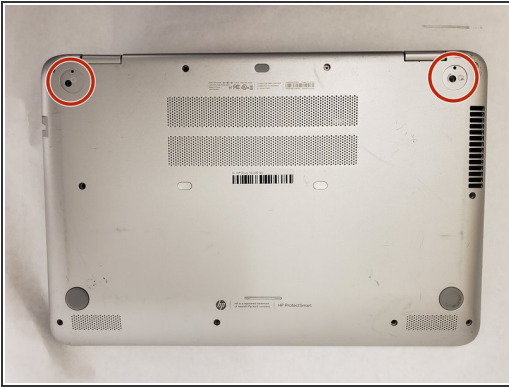
Before beginning, make sure to power off your laptop completely and disconnect any external power source. Finally, as you go through the steps in this guide, do so carefully, because electronic components are semi-fragile.



TOOLS:

- [Spudger](#) (1)
 - [Metal Spudger](#) (1)
 - [Phillips #0 Screwdriver](#) (1)
-

Step 1 — Motherboard



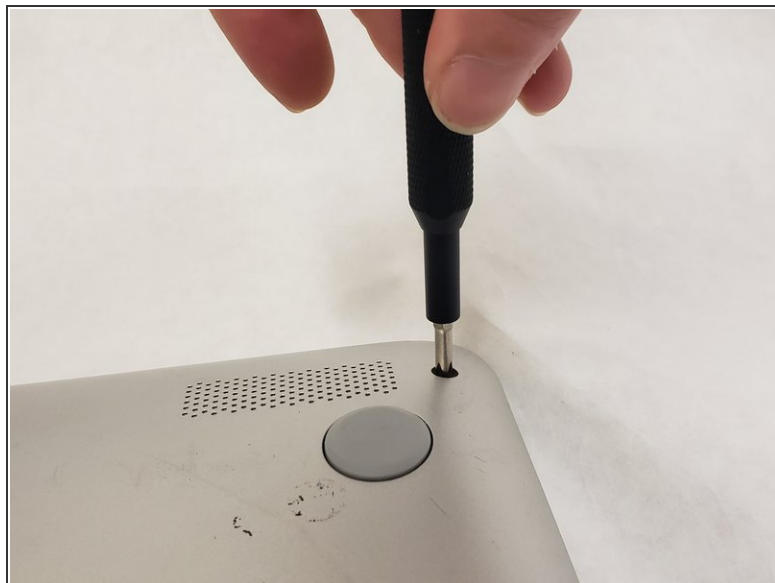
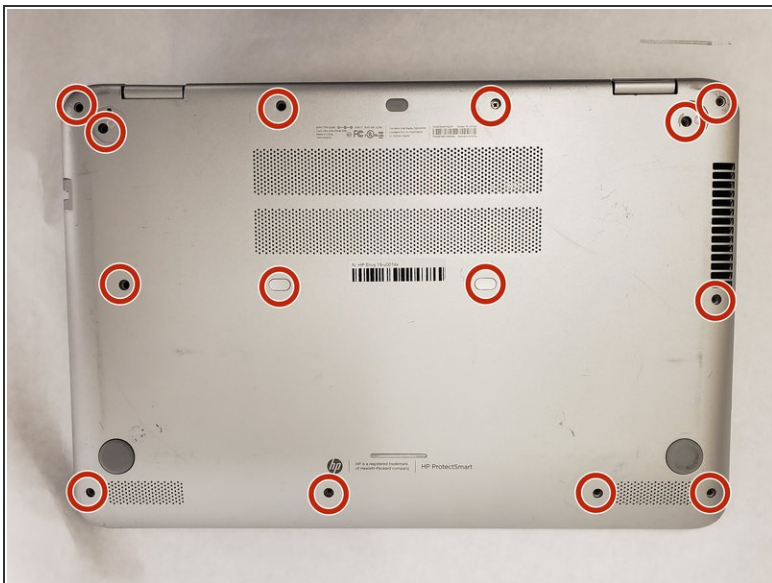
- Flip the device over so the bottom is facing up.
- Peel up the two rubber feet closest to the hinge using the metal spudger to reveal two 6.6 mm Phillips #0 screws.

Step 2



- Peel up the small plastic coverings in the middle of the device with the spudger to reveal two more 6.6 mm Phillips #0 screws.

Step 3



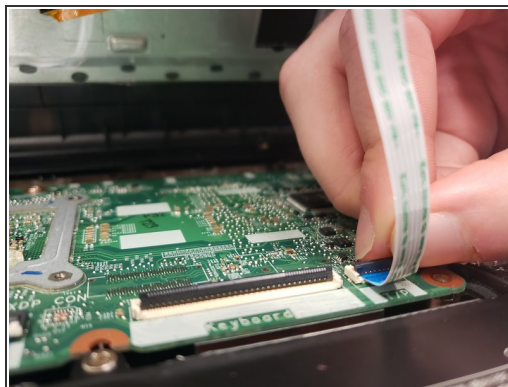
- Remove each of the fourteen 6.6 mm Phillips #0 screws with the Philips #0 screw driver.

Step 4



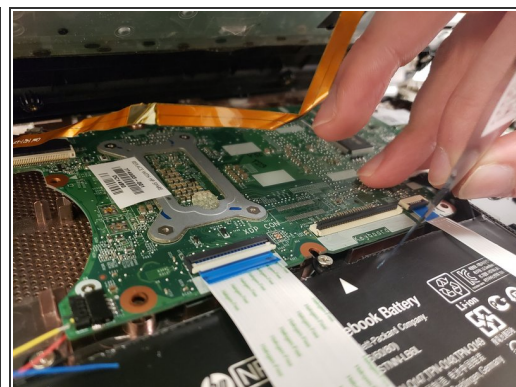
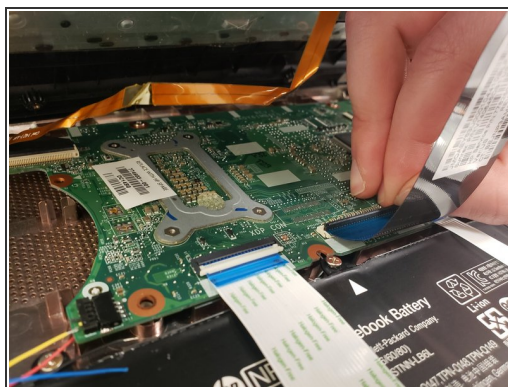
- Flip the device over and open it to reveal the keyboard.
- Use the metal spudger to pry the chassis apart and reveal the inside of the device.

Step 5



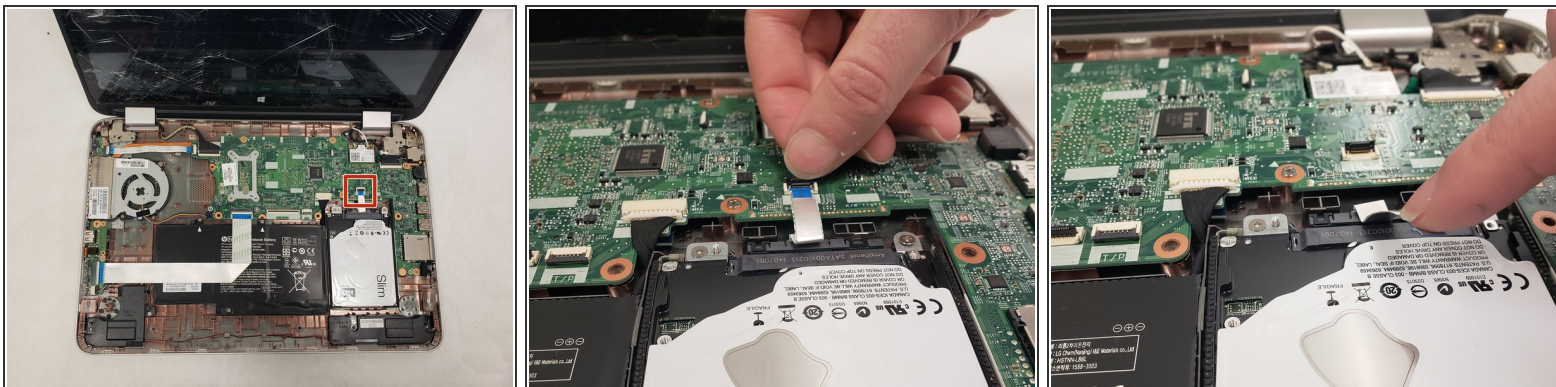
- Disconnect the T/P cable by flipping up the black plastic piece on the connector and pulling the cable out of the connector.

Step 6



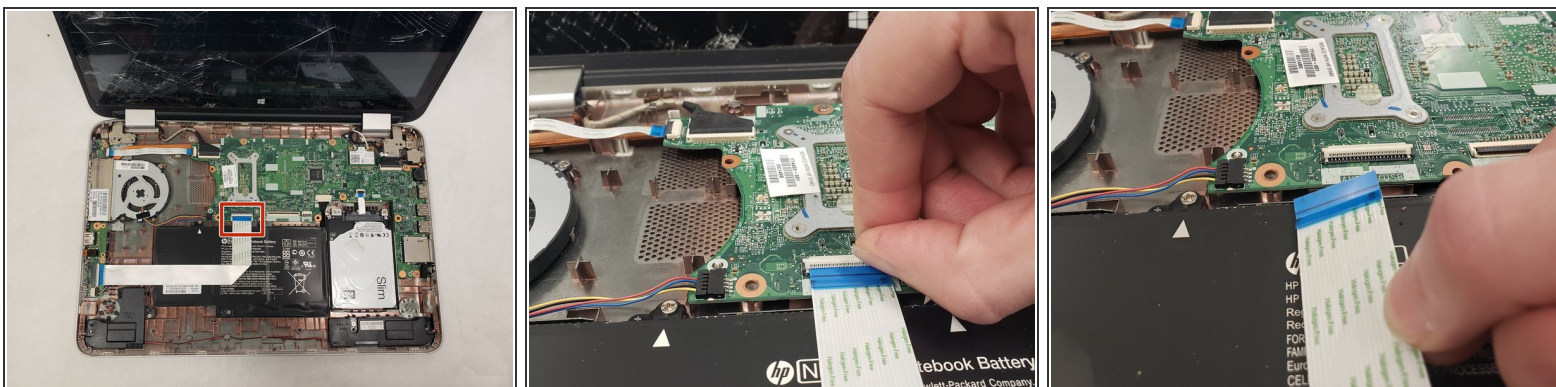
- Disconnect the keyboard cable by flipping up the black plastic piece on the connector and pulling the cable out of the connector.

Step 7



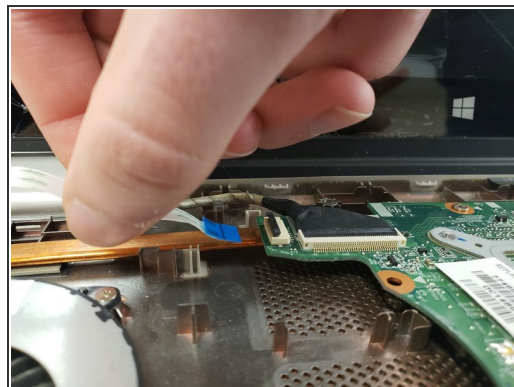
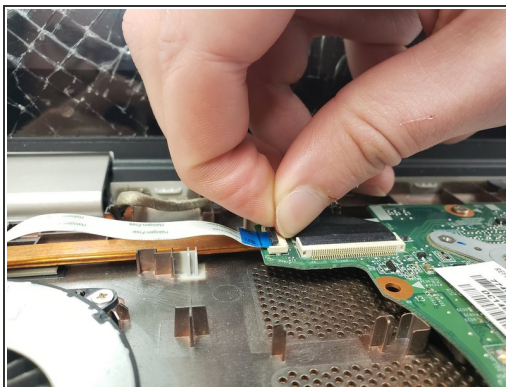
- Disconnect the battery cable by flipping up the black plastic piece on the connector and pulling the cable out of the connector.

Step 8



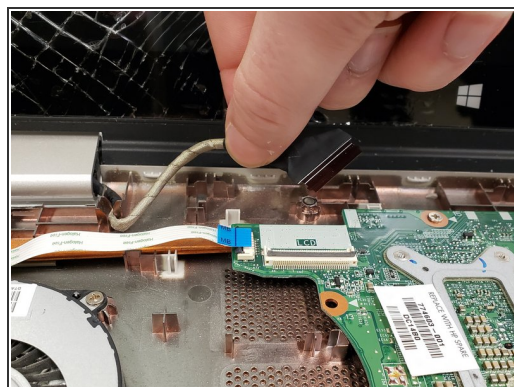
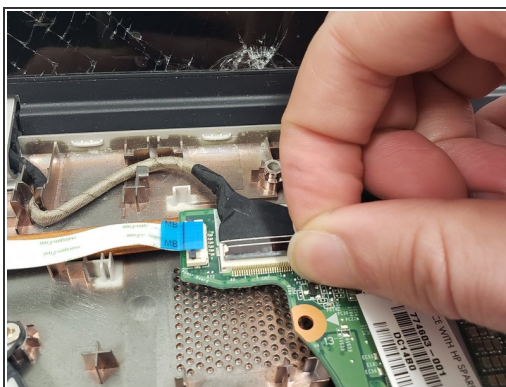
- Disconnect the AUX/USB cable by flipping up the black plastic piece on the connector and pulling the cable out of the connector.

Step 9



- Disconnect the cable by flipping up the black plastic piece on the connector and pulling the cable out of the connector.

Step 10



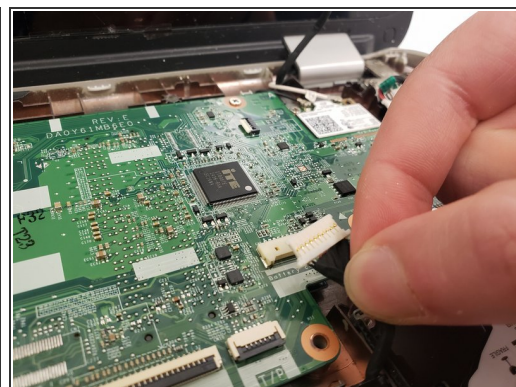
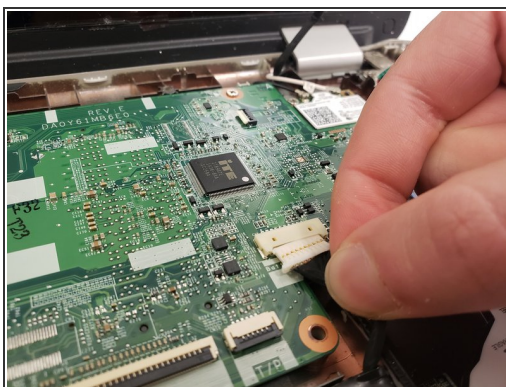
- Disconnect the cable by flipping up the black plastic piece on the connector and pulling the cable out of the connector.

Step 11



- Disconnect the cable by flipping up the black plastic piece on the connector and pulling the cable out of the connector.

Step 12



- Disconnect the cable by gently pulling it out. The spudger may be used to help loosen it.

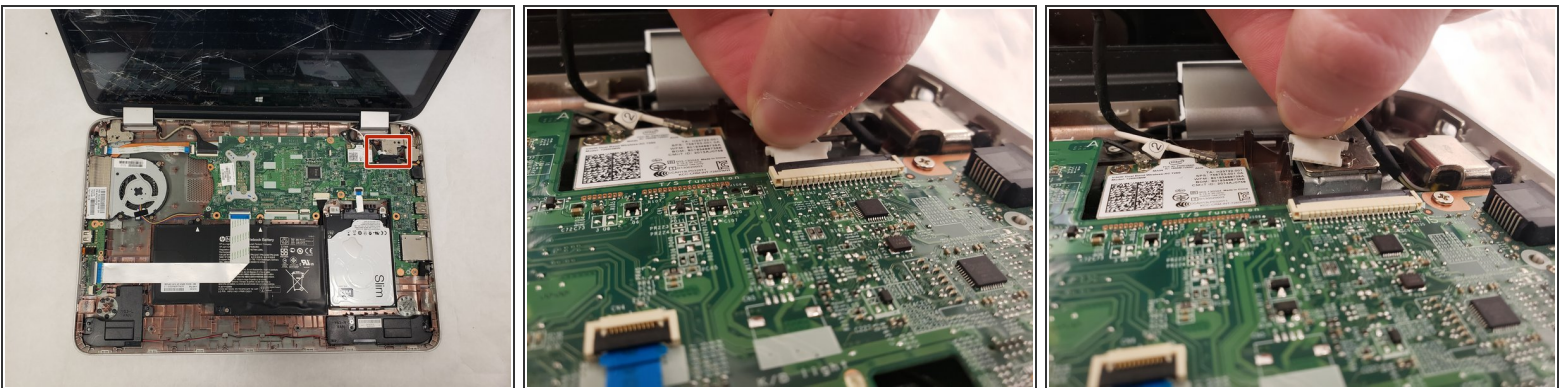
Step 13



- Remove the three 4.0 mm Phillips #0 screws with the Phillips #0 screwdriver on the fan.
- Disconnect the cable by gently pulling it out.
- Remove the fan by pulling it out of the chassis.

⚠ The connector tends to get stuck and forceful pulling will break it. Use the spudger to loosen the connector on each side.

Step 14



- Disconnect the cable by gently pulling it out. The spudger may be used to help loosen it.
- ⓘ This connector may be hard to see because it is connected on the underside of the motherboard.

Step 15



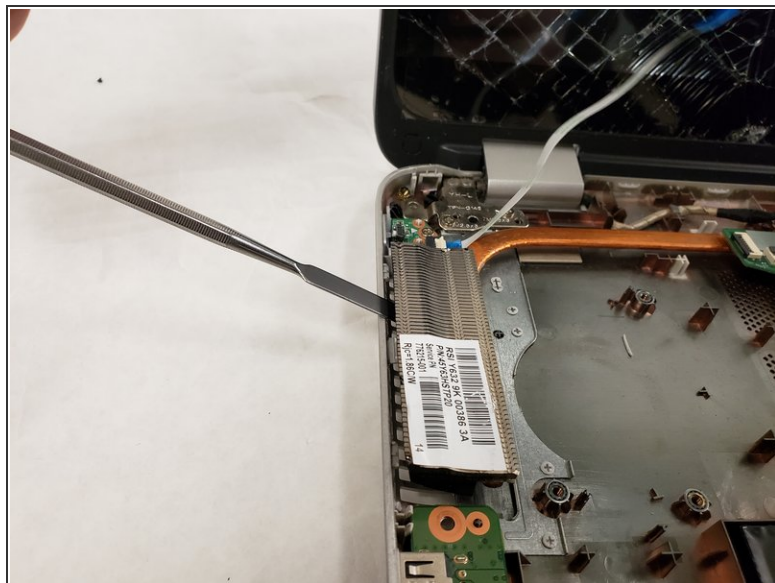
- Remove each of the six 4.0 mm screws with the Philips #0 screw driver.

Step 16



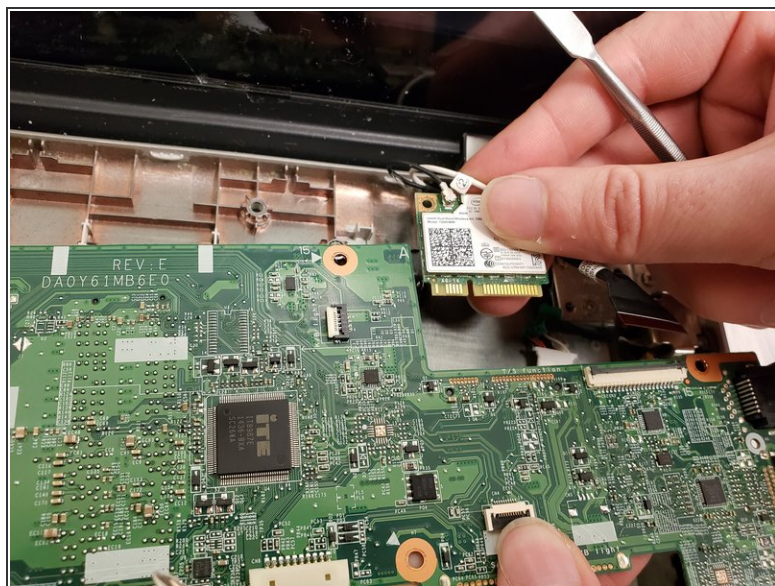
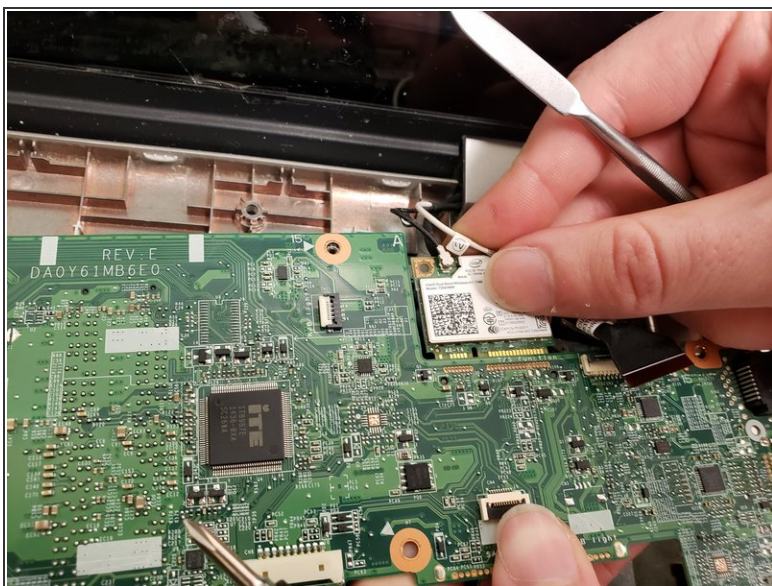
- Remove each of the three 4.0 mm screws around the fan with the Philips #0 screw driver.
- The fan will now be loose, and easy to lift out.

Step 17



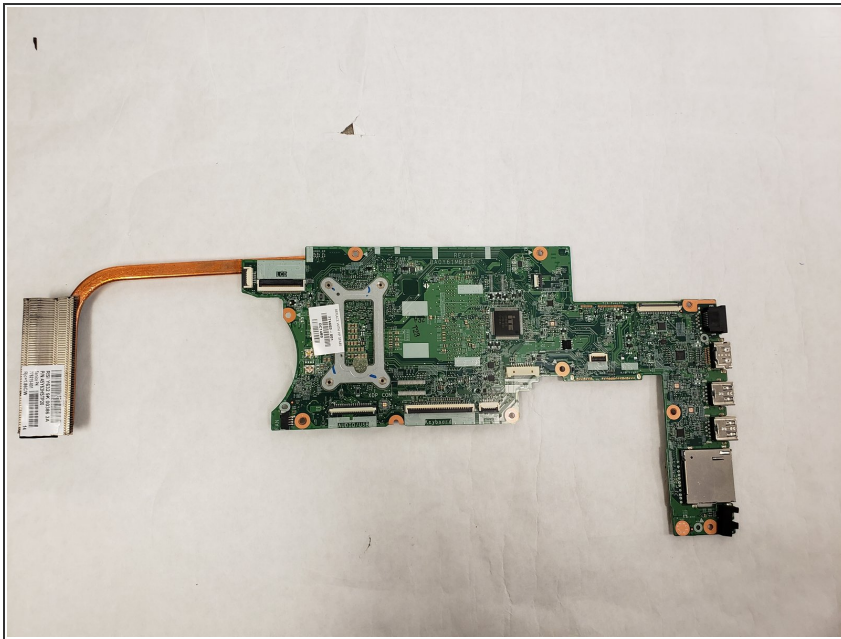
- Gently pry the heat sink loose to release the motherboard.

Step 18



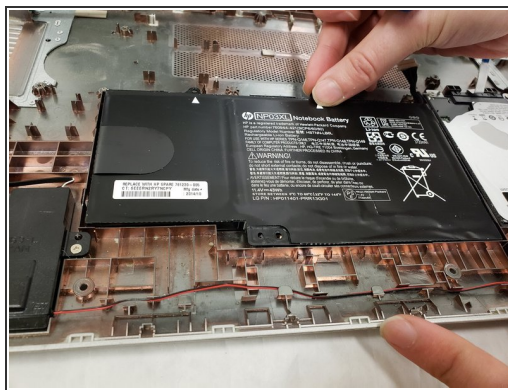
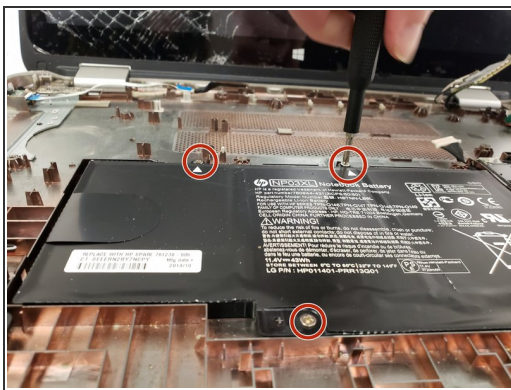
- Disconnect the wifi card from the motherboard and remove the motherboard from the rest of the device.

Step 19



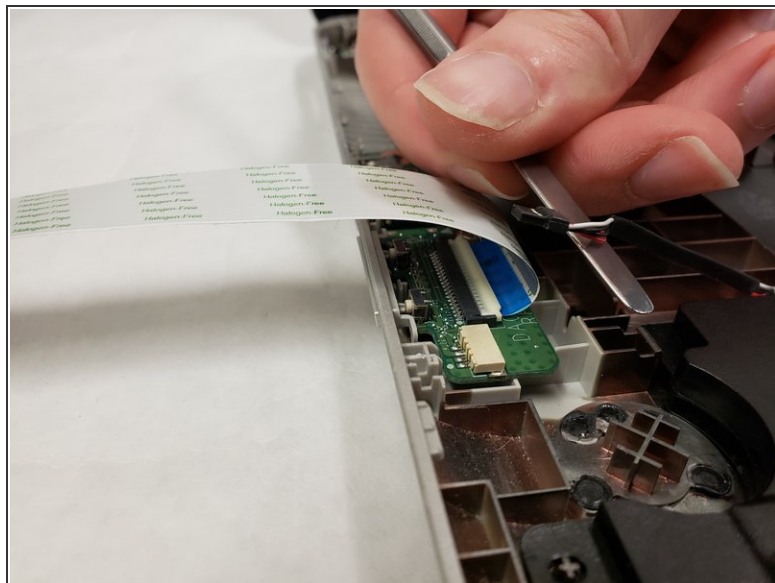
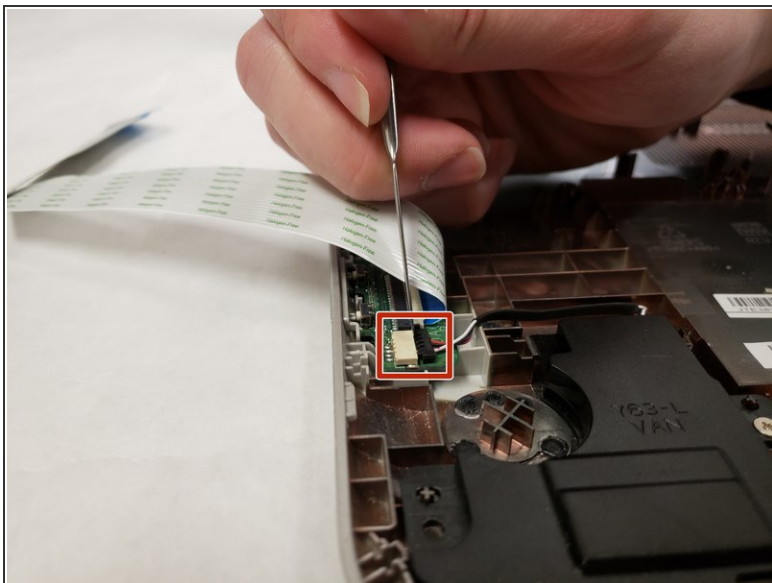
- The disconnected motherboard should look like the indicated photo.

Step 20 — Chassis



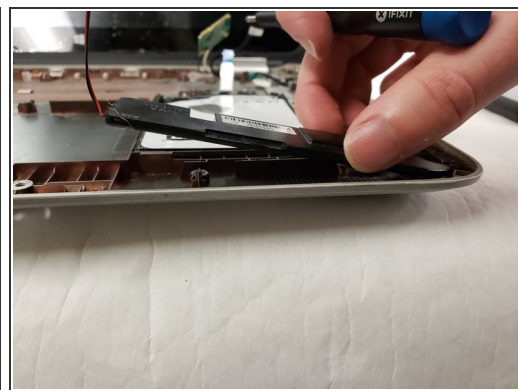
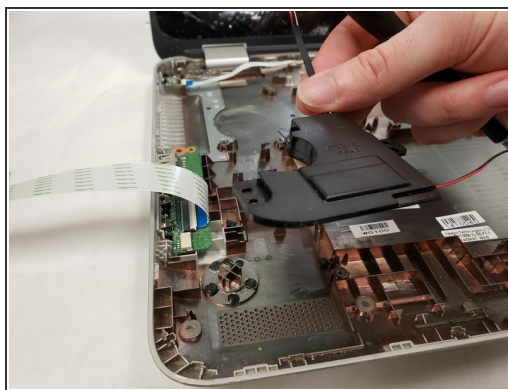
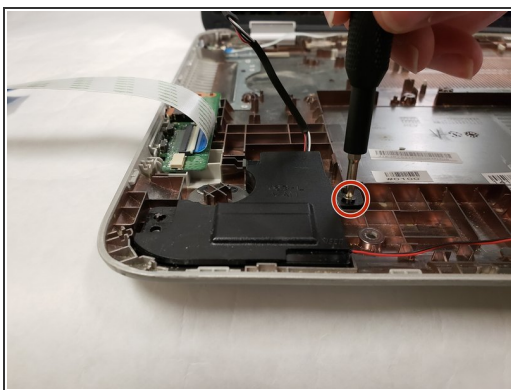
- Remove the three 4mm Phillips #0 screws that attach the battery to the chassis.
- Once all three 4mm Phillips #0 screws are out, lift the battery out of the chassis.

Step 21



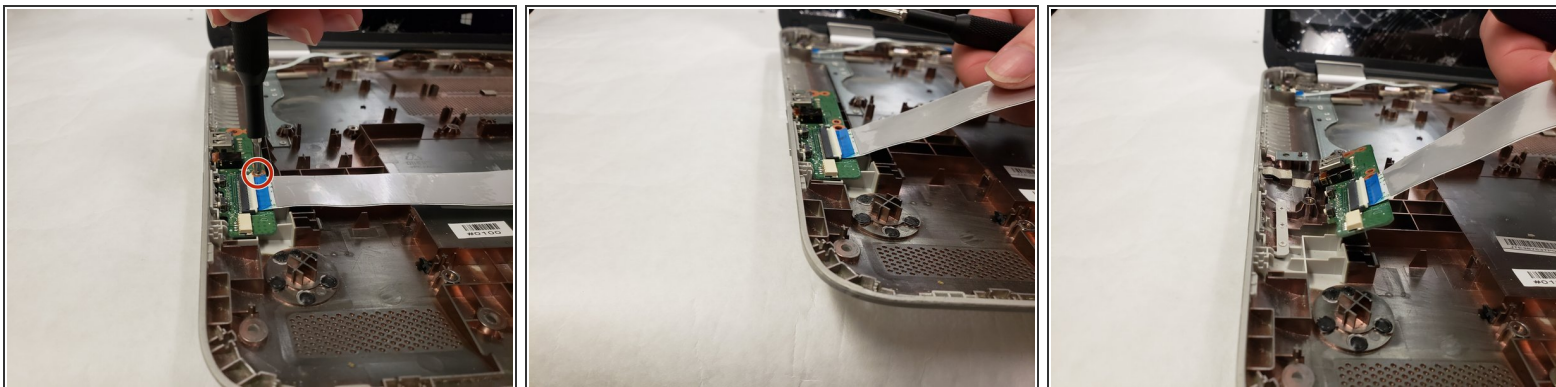
- Carefully, use the spudger, to loosen the I/O port board connector.
- Once the connector is loose, simply pull it away.

Step 22



- Remove the 4mm Phillips #0 screw that attaches the left speaker to the chassis.
- Lift the left side speaker out of the chassis.
- Remove the 4mm Phillips #0 screw that attaches the right speaker to the chassis.

Step 23



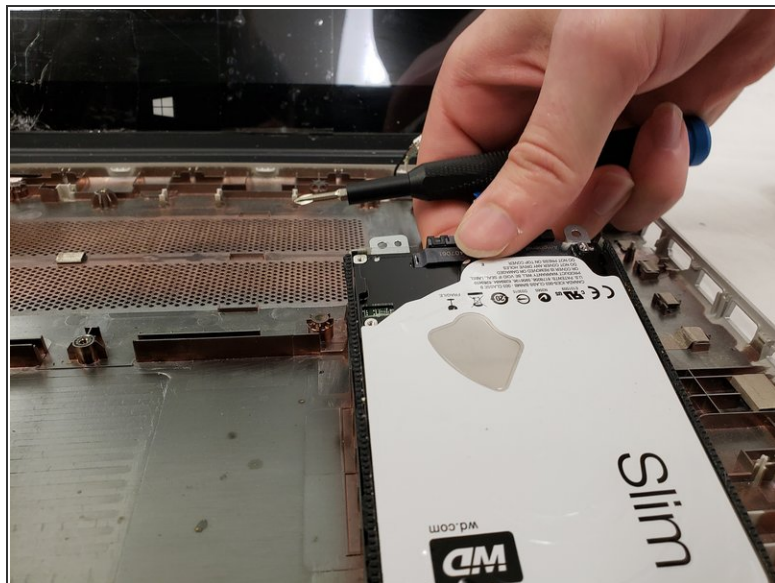
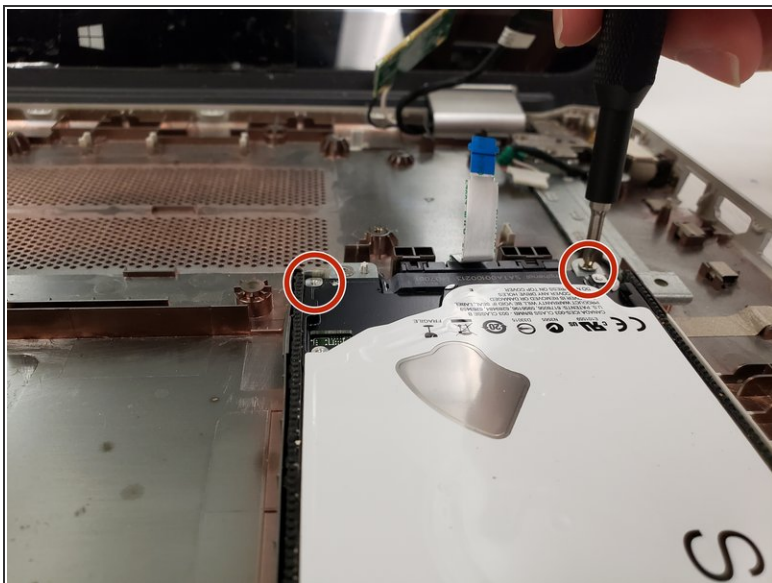
- Remove the 4mm Phillips #0 screw attaching the volume circuitry board to the chassis.
- Once screw has been removed, then simply pull the circuitry board out.

Step 24



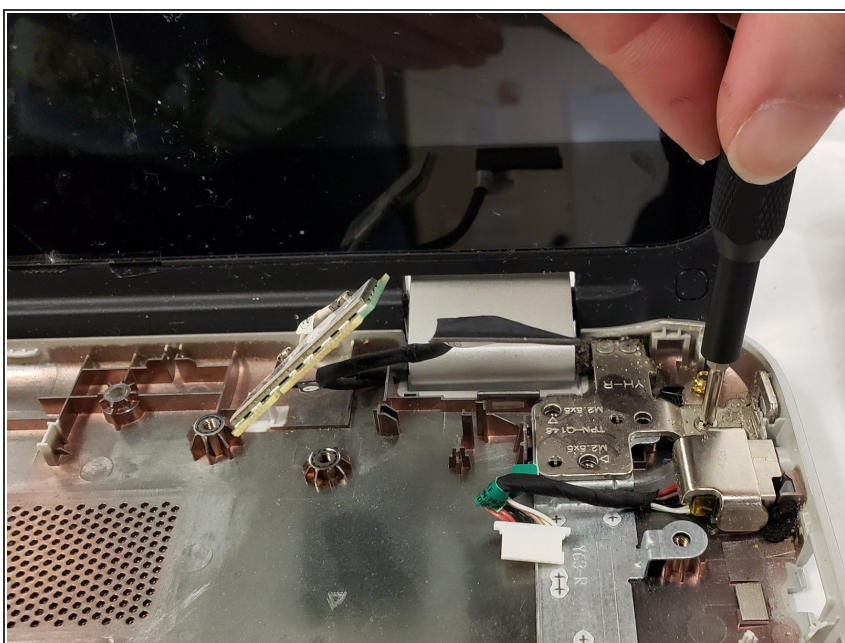
- Remove the 4 mm Phillips #0 screws attaching the power button circuitry board to the chassis.
- Once all the screws are removed, then simply pull the circuitry board out.

Step 25



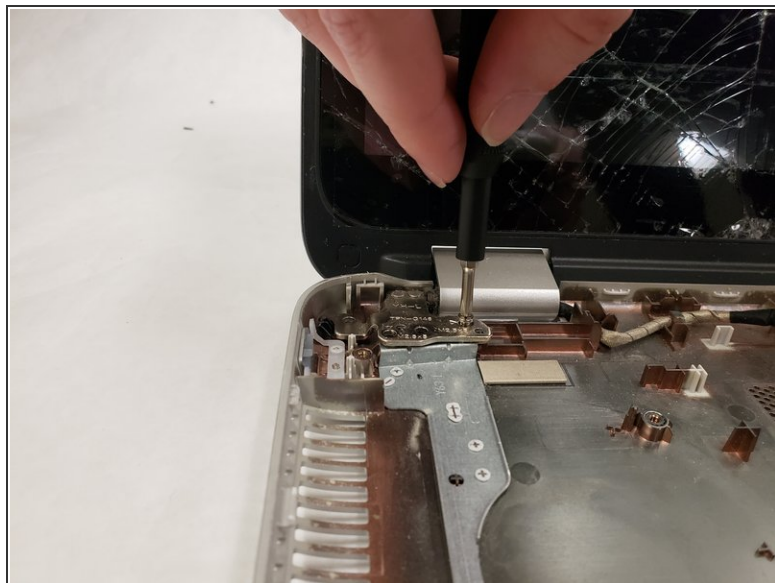
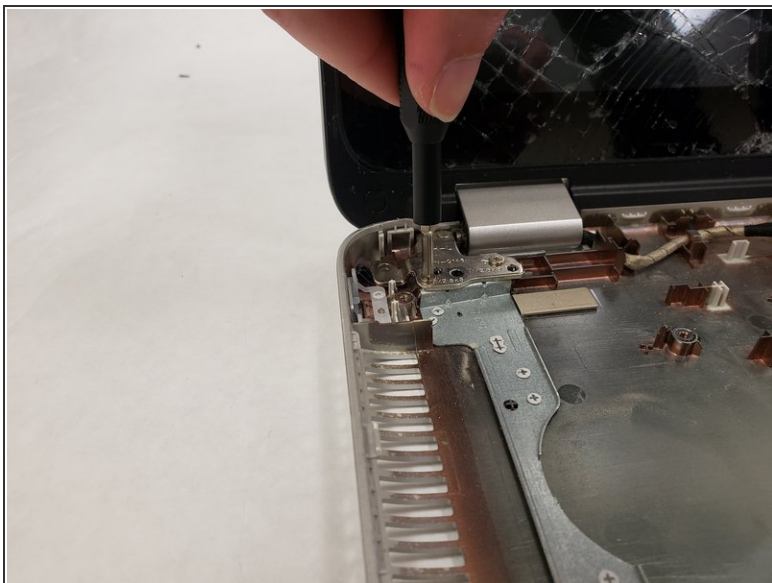
- Remove the two 4mm Phillips #0 screws that attach the storage device to the chassis.
- Then pull up on the storage device to get it pop it out of the chassis.

Step 26



- Remove the 6.6mm Phillips #0 screws that attach the screen to the right side of the chassis.

Step 27



- Remove the two 6.6mm Phillips #0 screws that attach the hinge to the chassis on the left side.

Step 28



- After you remove the screen, all that is left is the chassis!

To reassemble your device, follow these instructions in reverse order.