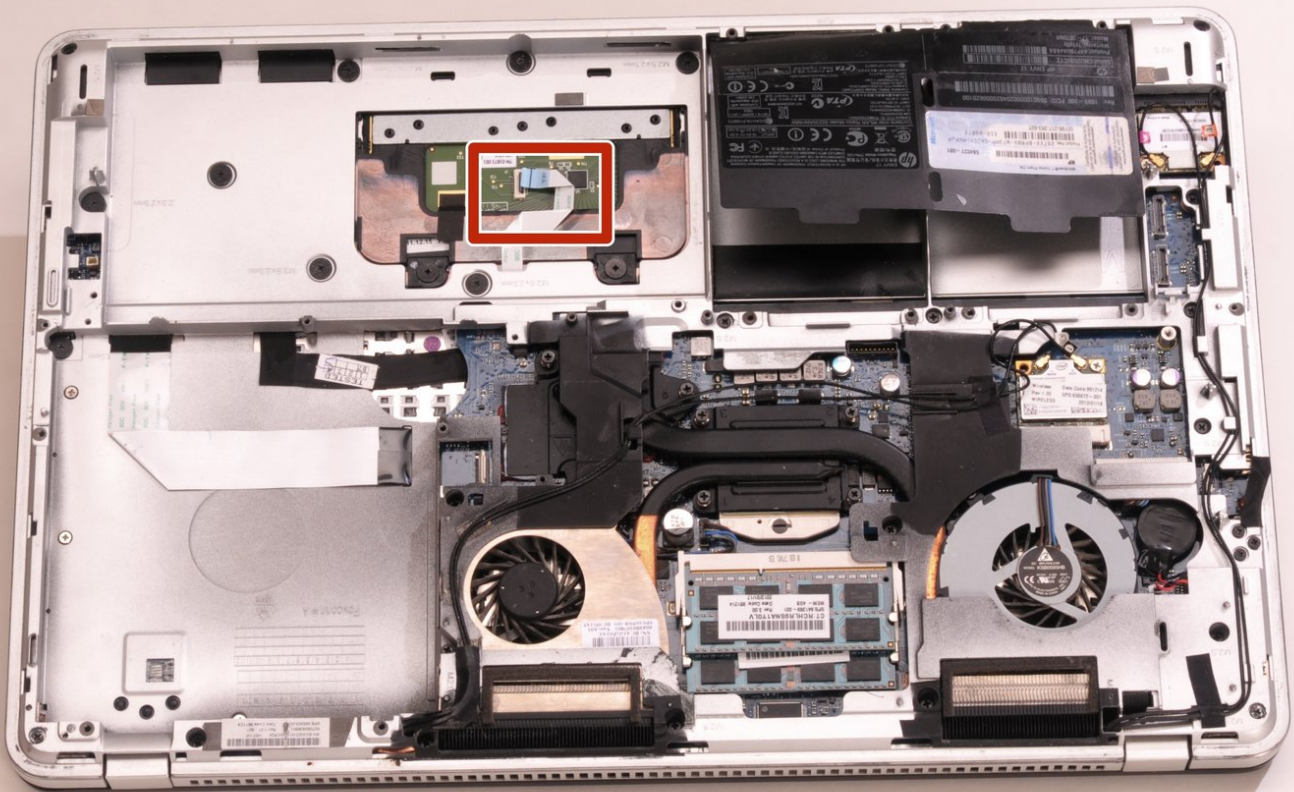




HP Envy 17-3070NR Top Cover Replacement

This guide will help you to replace the top cover of your HP Envy 17-3070NR.

Written By: Jasper Lewin

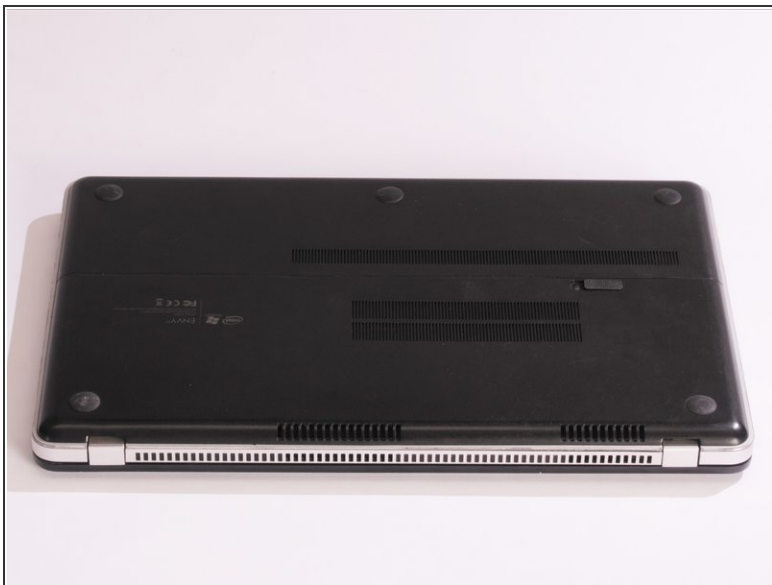





TOOLS:

- [Phillips #2 Screwdriver](#) (1)
 - [T8 Torx Screwdriver](#) (1)
 - [Spudger](#) (1)
-

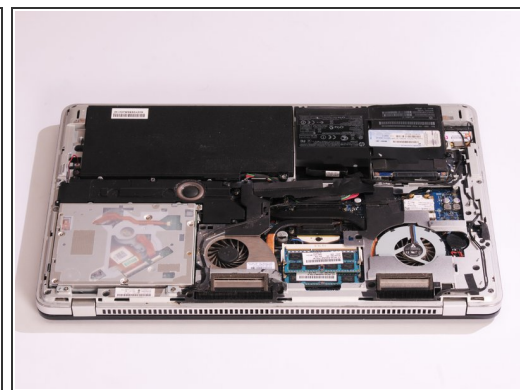
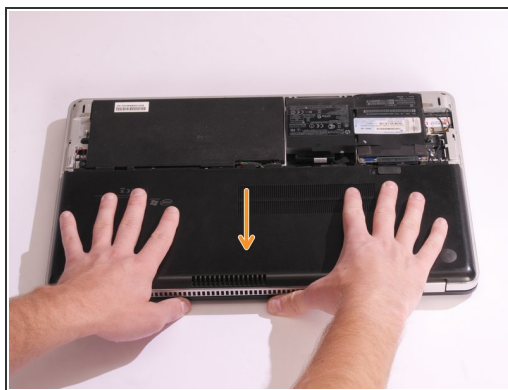
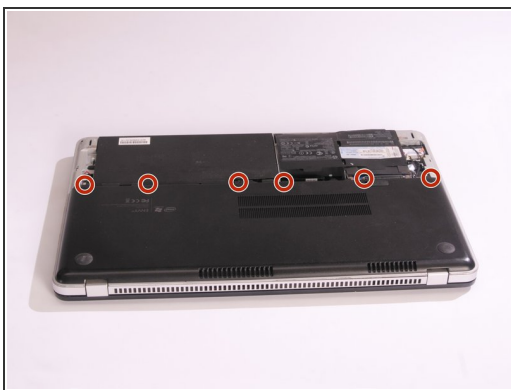
Step 1 — Back Cover



 Before you begin taking apart the computer, make sure that it is completely powered off.

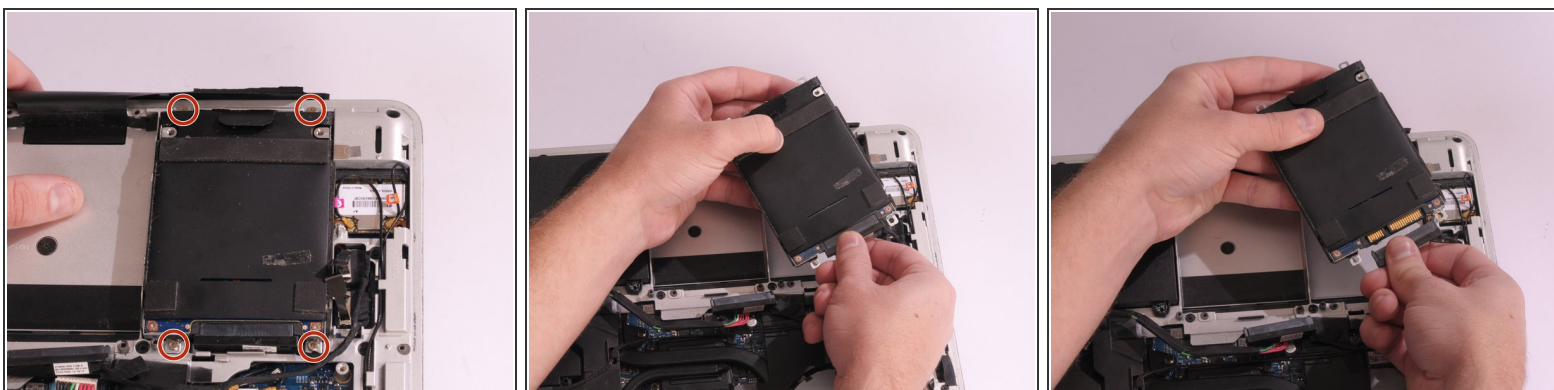
- Slide the release latch away from the nearest edge.
- Slide the back cover off of the computer.

Step 2



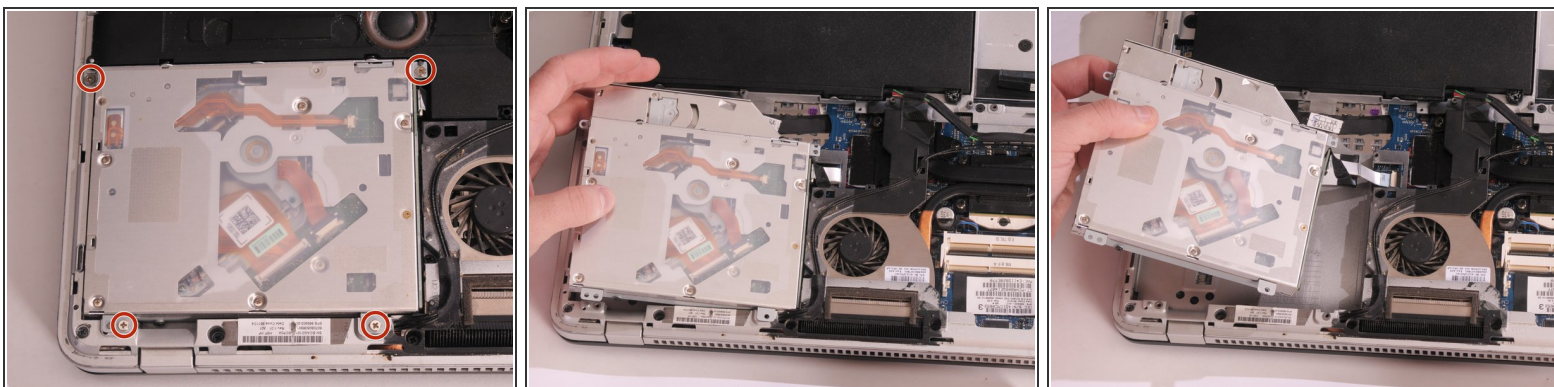
- Remove the six 3.7mm Phillips screws.
- Slide the back cover until it clicks, then lift it straight off.

Step 3 — Hard Drive



- Remove the four 3.7mm Phillips screws that hold the hard drive onto the computer.
- Remove the hard drive by lifting it out of its cavity.
- Unplug the hard drive cable that connects it to the main assembly.

Step 4 — Optical Drive



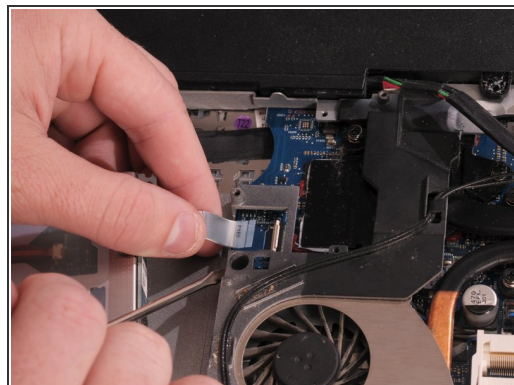
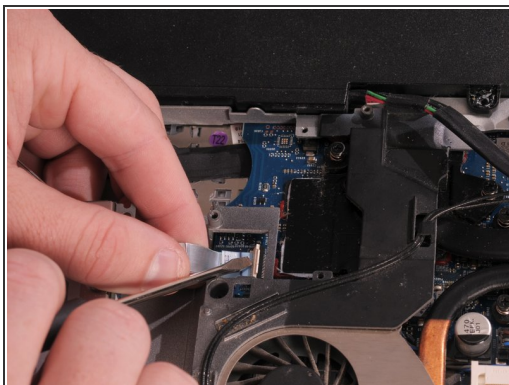
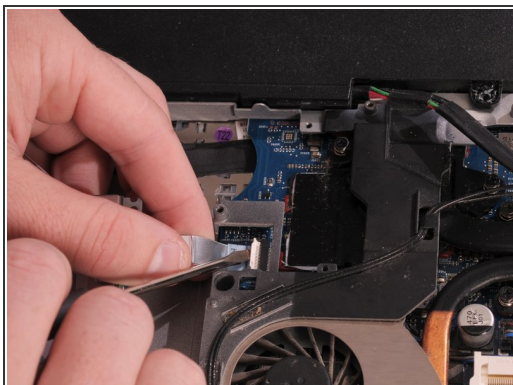
- Remove the four 3.7mm Phillips screws that secure the optical drive to the computer.
 - Slowly lift the optical drive away from the computer ensuring that you don't put stress on the connecting cable.
- ⚠ Do not fully lift off the optical drive as there is still a cable that connects it to the motherboard.

Step 5



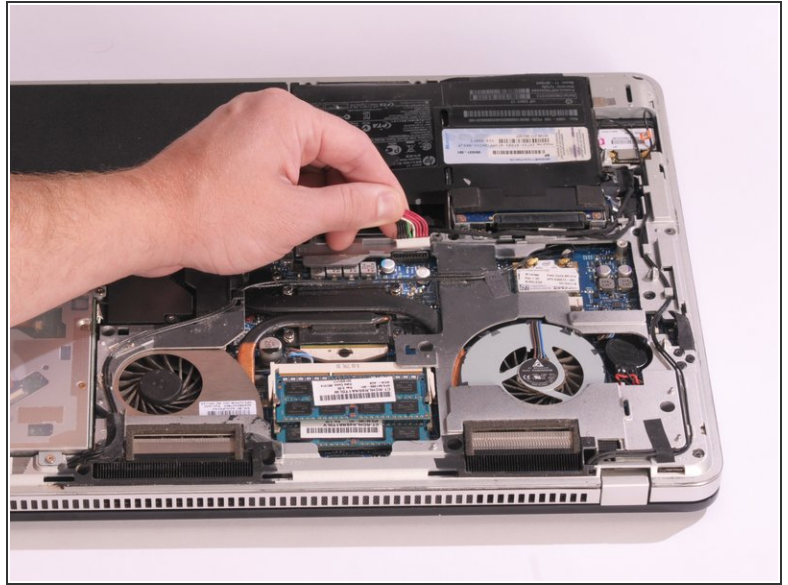
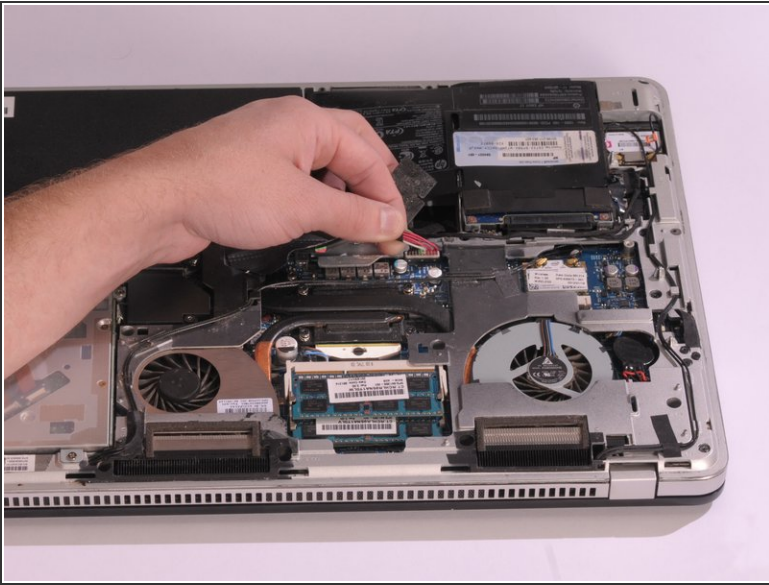
- Remove Sub Speaker assembly first in order to remove Optical drive. Carefully disconnect speaker connector.

Step 6



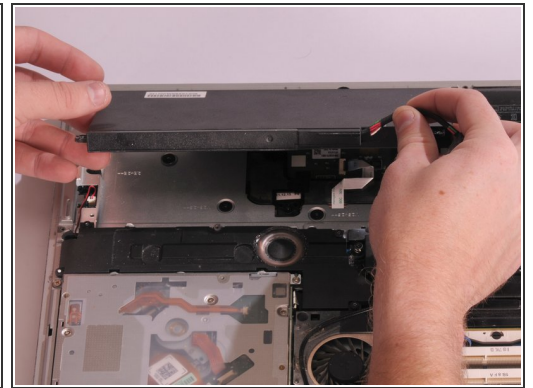
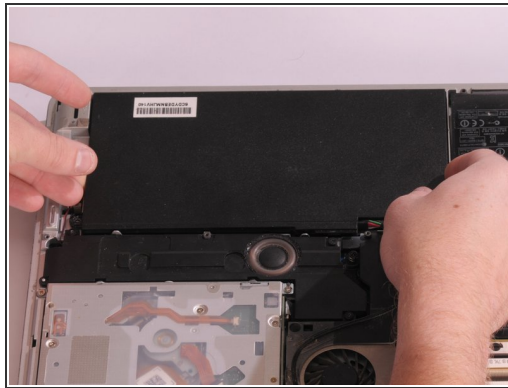
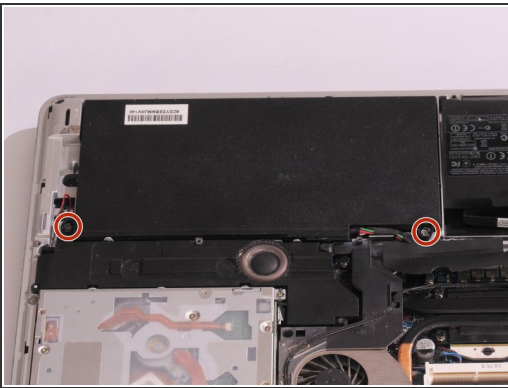
- Carefully disconnect the connecting cable by lifting the white clamp with a Flathead screwdriver and pulling on the blue tab away from connector.

Step 7 — Battery



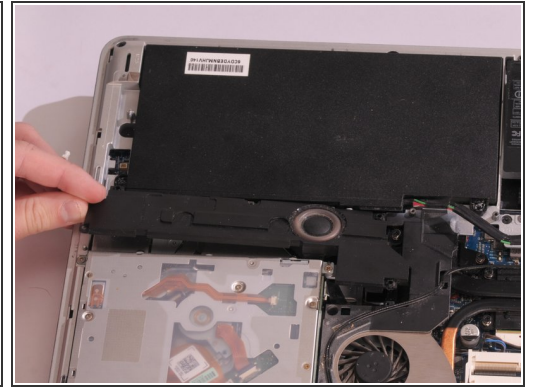
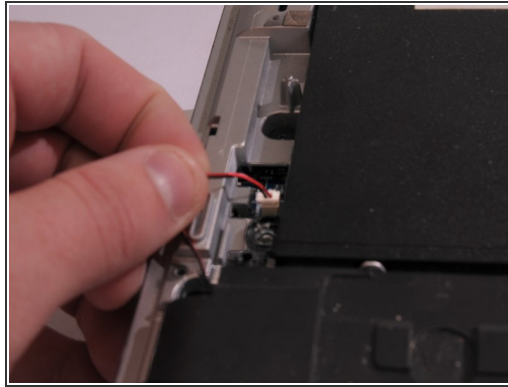
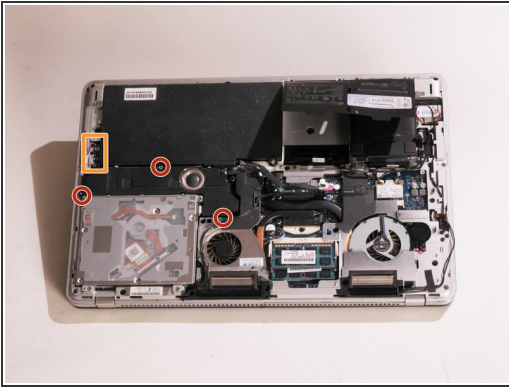
- Disconnect the multi-colored battery cable from the main assembly by gently pulling upward on it.

Step 8



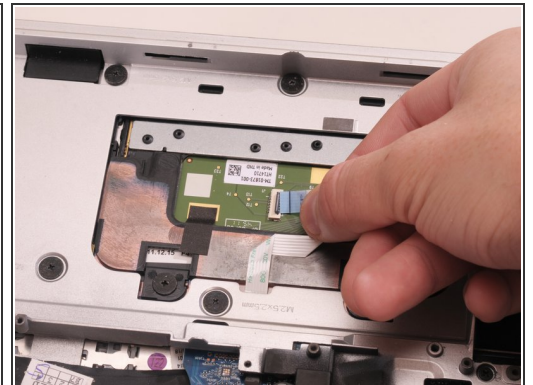
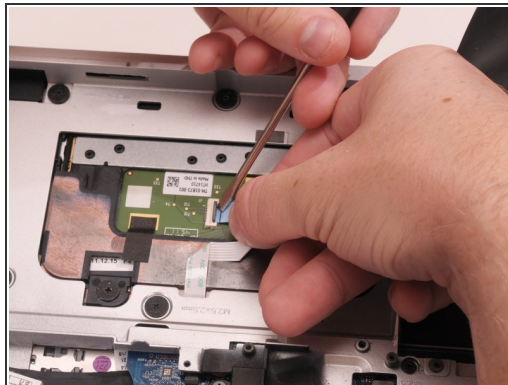
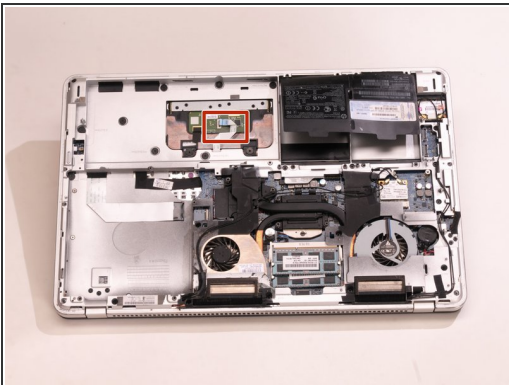
- Remove the two 3.8 mm Torx screws using M8 Torx screwdriver.
- Remove the battery by pulling it straight out away from the computer.
- ⓘ It is much easier to use the battery cable to carefully lift the battery off than to try to pry it off with tools.

Step 9 — Subwoofer



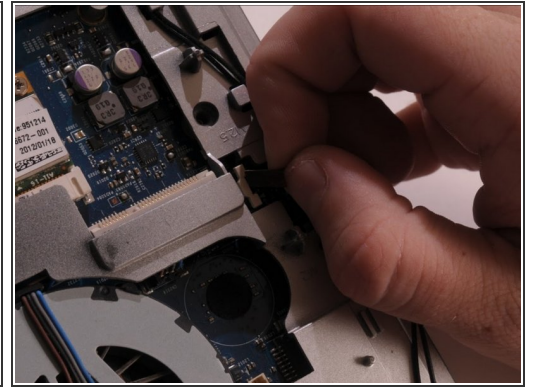
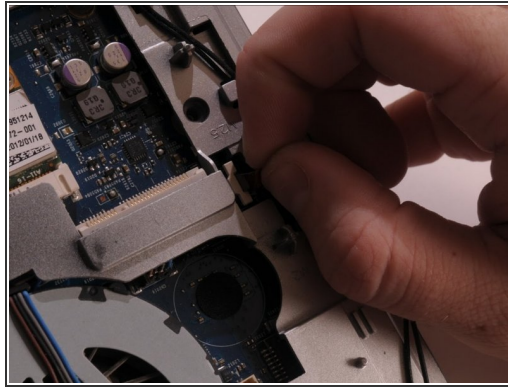
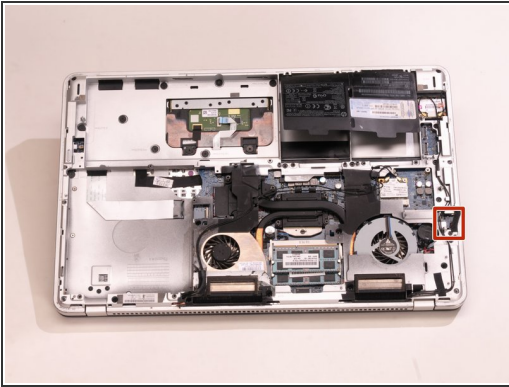
- Unscrew the three 6.5mm Phillips shoulder screws that connect the subwoofer to the computer.
- Disconnect the red and black subwoofer cable from the system board by pulling it upwards.
- Remove the subwoofer by pulling straight up from the main assembly.

Step 10 — Top Cover



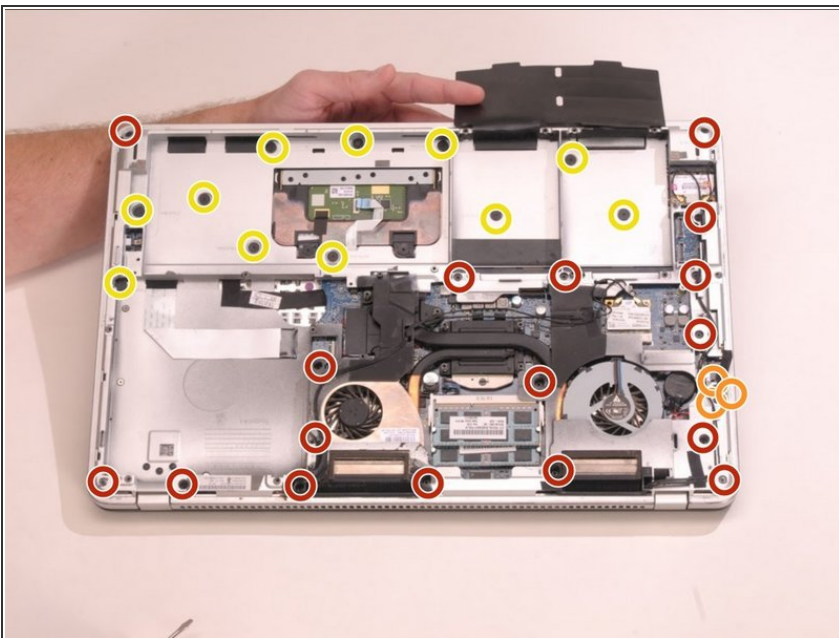
- Remove the first connector by lifting the white clamp with a Flathead screwdriver and pulling the connector to your right.

Step 11



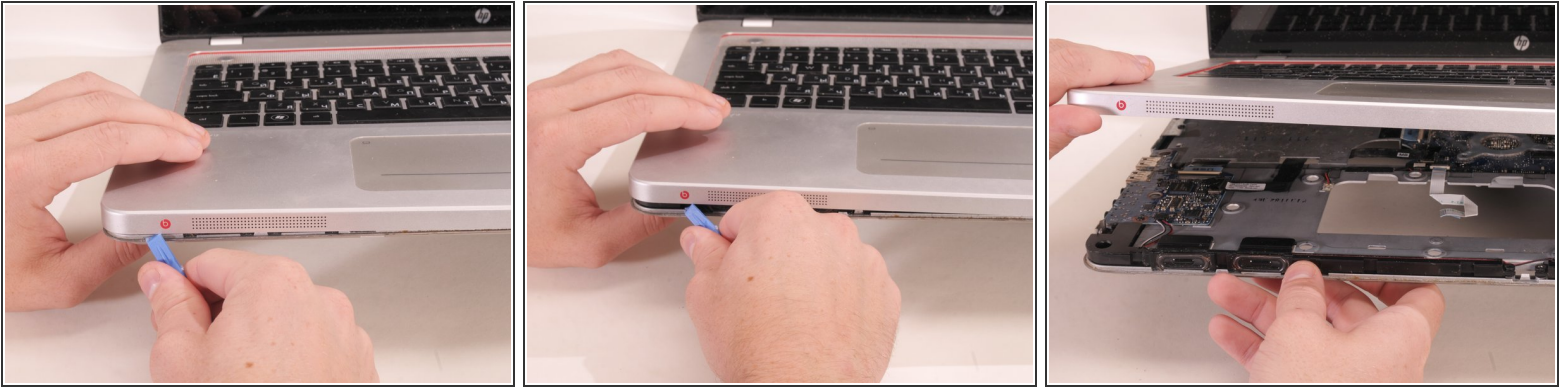
- Remove the second connector by gently pulling upward.

Step 12



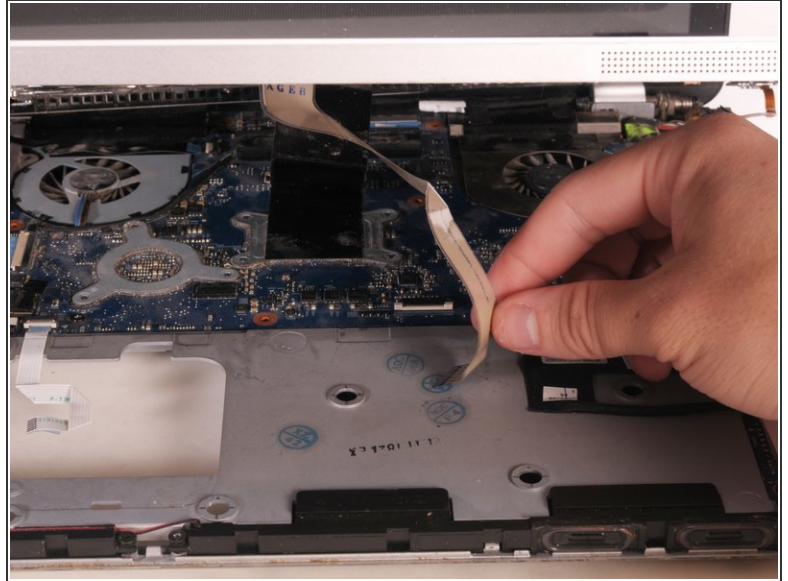
- Remove the seventeen 6.6mm Phillips screws.
- Remove the three 3.6 mm Phillips screws.
- Remove the eleven 3.2mm Phillips screws
 - i Three of the 3.2mm Phillips screws are located underneath the black hard drive flap.
- i Make sure that you keep the screws organized so that you keep track of all of the different sizes and locations.

Step 13



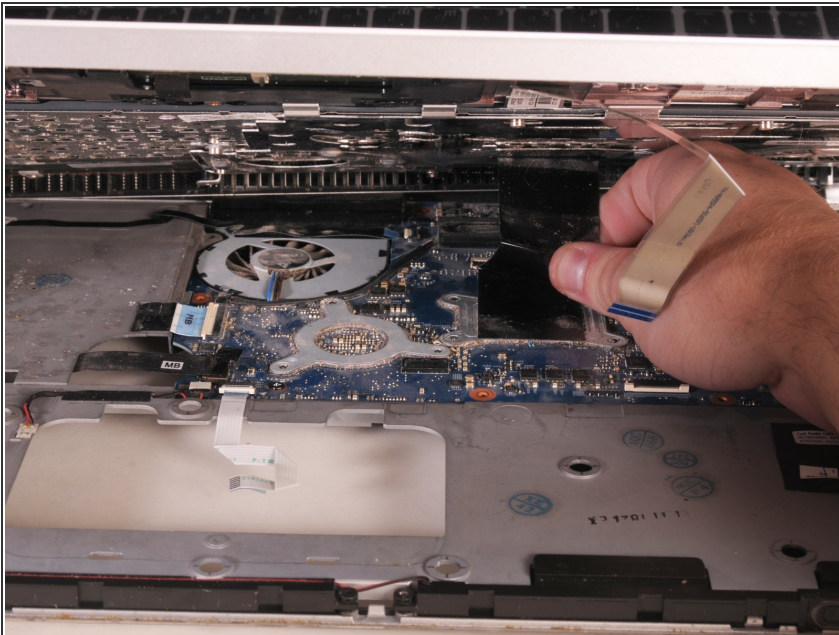
- Flip the laptop over.
 - Use a Plastic Opening tool to carefully pry all around the top cover up off of the remaining assembly.
 - ⓘ Starting location for prying does not matter as long as you pry all around the frame before lifting it off.
- ⚠ Do not fully lift the top cover because there are cables that will need to be disconnected before removal.

Step 14



- Gently pull the white connector shown in the picture towards you to disconnect it from the system board.

Step 15



- Gently pull the black connector towards you to disconnect the top cover from the main assembly.
- Once both connectors are disconnected, lift the top cover off of the main assembly.

To reassemble your device, follow these instructions in reverse order.

This document was generated on 2020-04-17 08:02:28 AM (MST).

