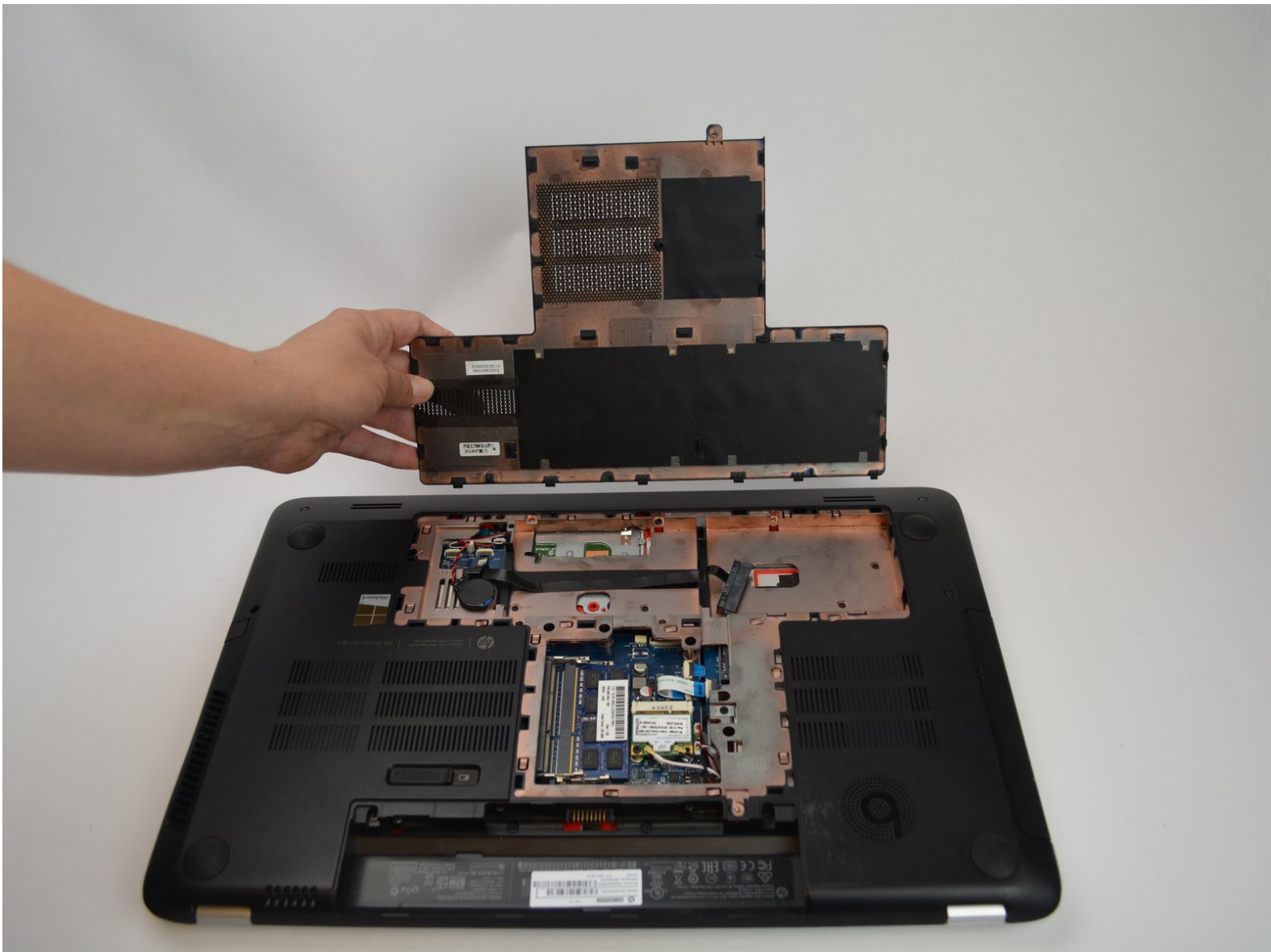




HP Envy 17-J013CL Back Panel Replacement

Prerequisite Only How to remove the laptop's back panel in order to get to the inner components.

Written By: Matt McBride



INTRODUCTION

The back panel on the HP Envy 17 is a simple plate that covers the underside of the laptop. Once removed it gives easier access to laptop components such as the WLAN module and RAM module. This is a crucial step in order to delve deeper into the device.




TOOLS:

- [Phillips #1 Screwdriver](#) (1)
-

Step 1 — Battery



- Lay the laptop with the battery facing towards you.

 Remember to disconnect the AC cable and other power sources from the device before replacing/repairing parts.

Step 2



- Grab hold of the small battery slider and apply pressure to the right.
- The laptop itself will push the battery out for you once the switch slides all the way to the right.

Step 3



- Pull the battery out and let go of the battery slider.

Step 4 — Back Panel




- Use a PH1-screwdriver to loosen the 7mm screw. The screw will not fully come out as it is held by a washer underneath but will come out enough to open it.

Step 5



- Gently pull the back panel off starting from the battery side towards the back.
- Pull it back as it snaps out of the holding sockets.

 It is preferred to use both hands when pulling the back panel off to prevent bending it out of shape.

To reassemble your device, place the back panel from opposite the battery end in the slots and place down until it snaps into place.