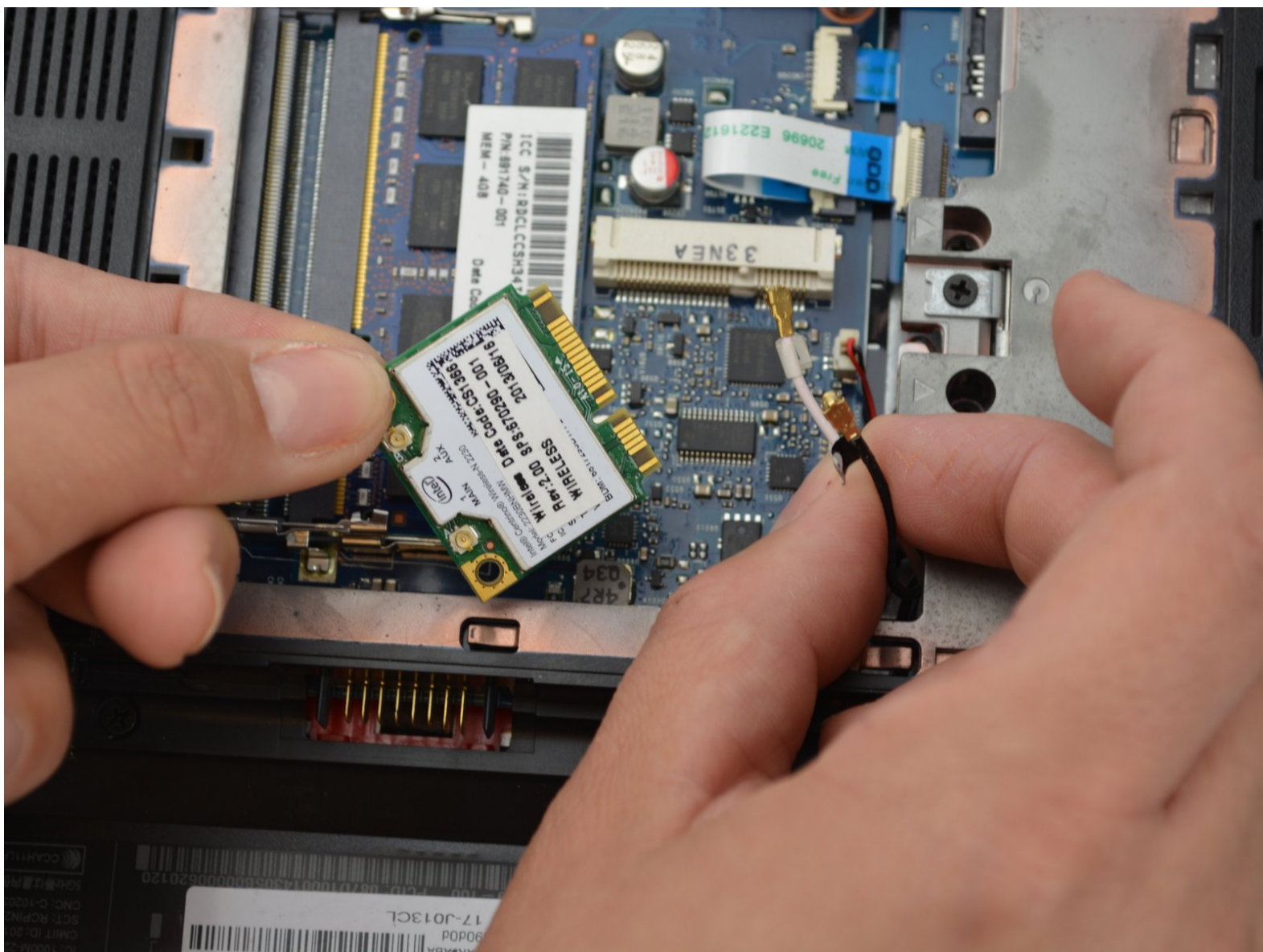




HP Envy 17-J013CL WLAN Module Replacement

The WLAN Module, or Wi-Fi module is located inside the laptop underneath the back panel. Easy fix with just a few steps.

Written By: Matt McBride



This document was generated on 2020-04-14 02:59:17 PM (MST).

INTRODUCTION

The WLAN module works the wifi that comes and goes from the laptop. So replacing this whenever goes faulty is important and thankfully is easy to fix! Be sure to keep yourself grounded to eliminate static!

TOOLS:

- [Phillips #1 Screwdriver](#) (1)
-

Step 1 — Battery



- Lay the laptop with the battery facing towards you.
- ⚠ Remember to disconnect the AC cable and other power sources from the device before replacing/repairing parts.

Step 2



- Grab hold of the small battery slider and apply pressure to the right.
- The laptop itself will push the battery out for you once the switch slides all the way to the right.

Step 3



- Pull the battery out and let go of the battery slider.

Step 4 — Back Panel



- Use a PH1-screwdriver to loosen the 7mm screw. The screw will not fully come out as it is held by a washer underneath but will come out enough to open it.

Step 5



- Gently pull the back panel off starting from the battery side towards the back.
- Pull it back as it snaps out of the holding sockets.

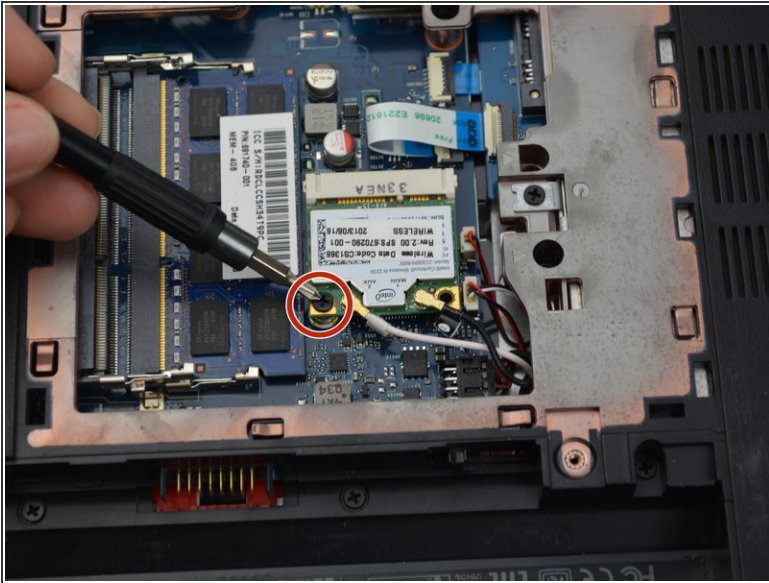
⚠ It is preferred to use both hands when pulling the back panel off to prevent bending it out of shape.

Step 6 — WLAN Module



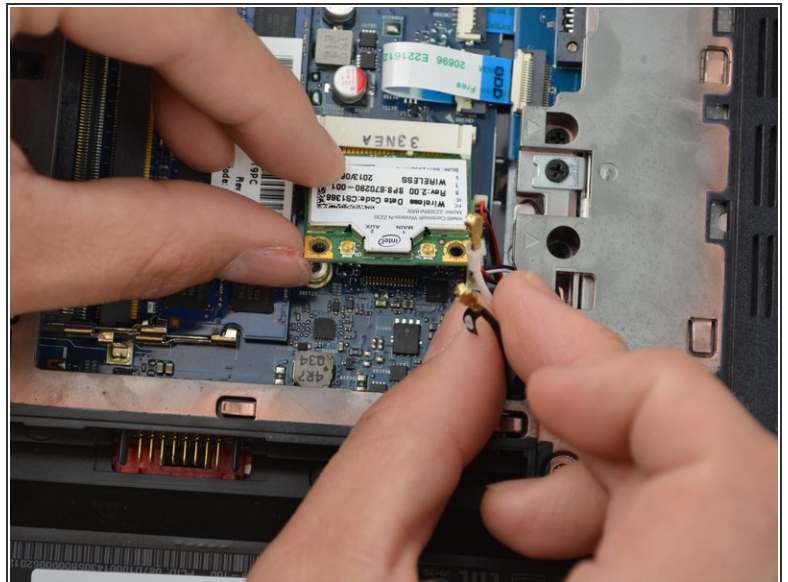
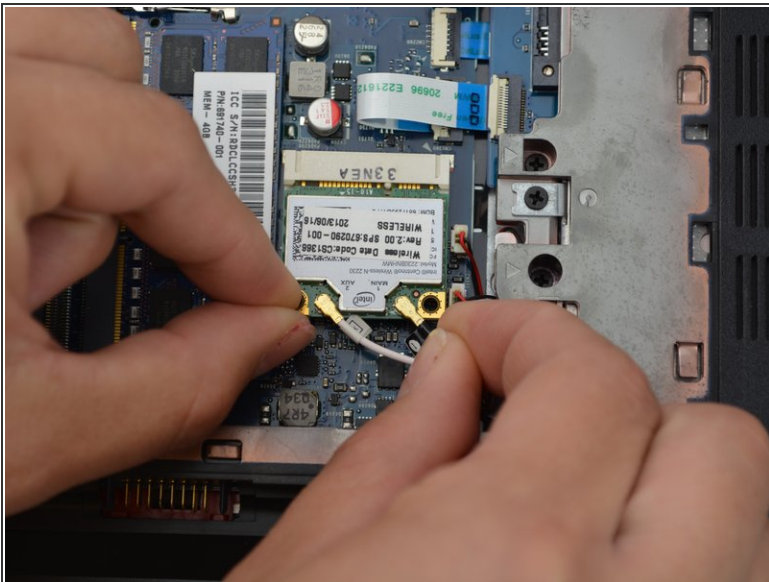
- Locate the WLAN module.

Step 7



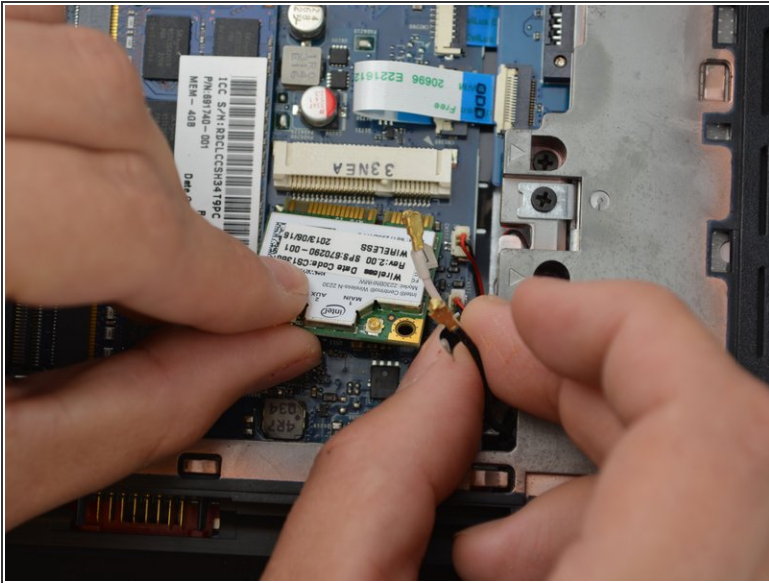
- Use a PH1-screwdriver to remove the 7mm screw from the motherboard.

Step 8



- Lift the black and white wire from the module. Removing the wires from the ends will have a distinct popping noise.
- ☑ Remember to put the **white** wire on the **left** side of the module and the **black** wire on the **right** side. Failure to do so may cause issues.

Step 9



- Gently pull out the module away from the motherboard.
- ☑ Make sure to put the module back in the correct orientation designated by the little arch in the end of the module.

To reassemble your device, follow these instructions in reverse order.