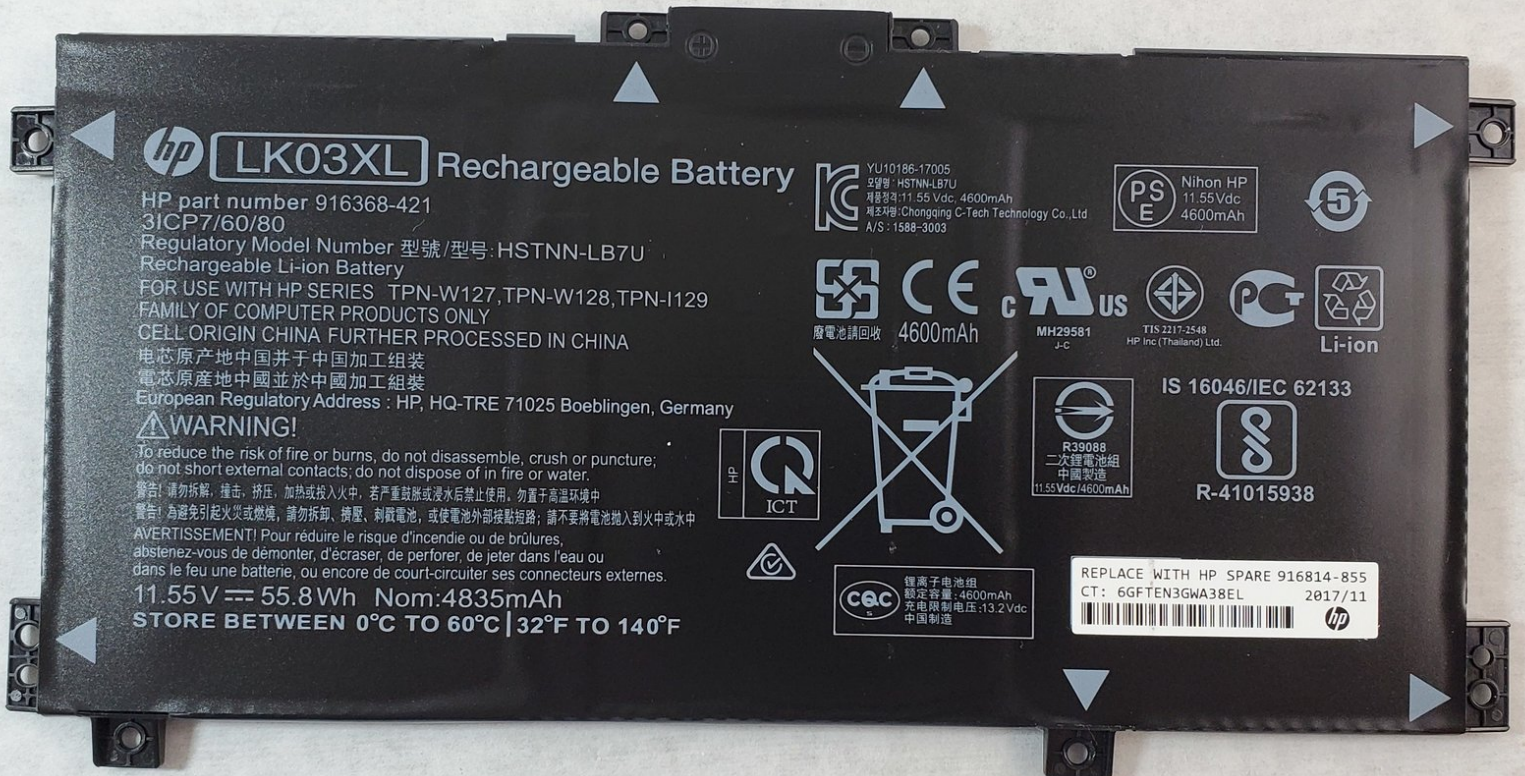




HP Envy 17m-ae111dx Battery Replacement

If you suspect that you are having problems with the battery in your laptop, follow this guide to replace the battery in your HP Envy 17m-ae111dx.

Written By: Austin Greene



INTRODUCTION

If the battery in your laptop is not operating correctly by either not receiving or retaining a charge or if it is overheating, you might need to replace the battery. Follow this guide to replace the battery by taking off the back cover off the laptop, disconnecting the inoperative/damaged battery, and finally connecting the new battery to the laptop. In order to complete this replacement, you will need the iFixit Opening Tool, a 00 phillips-head Screwdriver, and a T5 Torx-Head Screwdriver.



TOOLS:

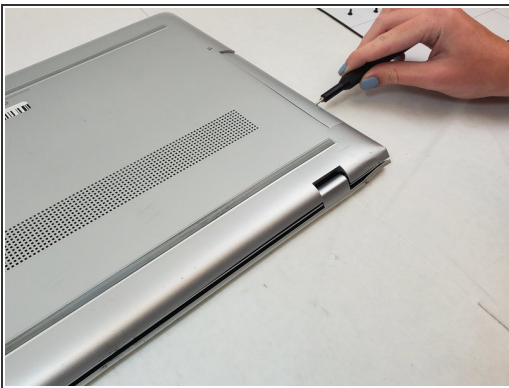
- [iFixit Opening Tools](#) (1)
- [iFixit Plastic Opening Tool](#) (1)
- [Phillips #00 Screwdriver](#) (1)
- [T5 Torx Screwdriver](#) (1)

Step 1 — Back Cover



- ❗ Power off your laptop before beginning disassembly.
- Place the laptop on its back.

Step 2



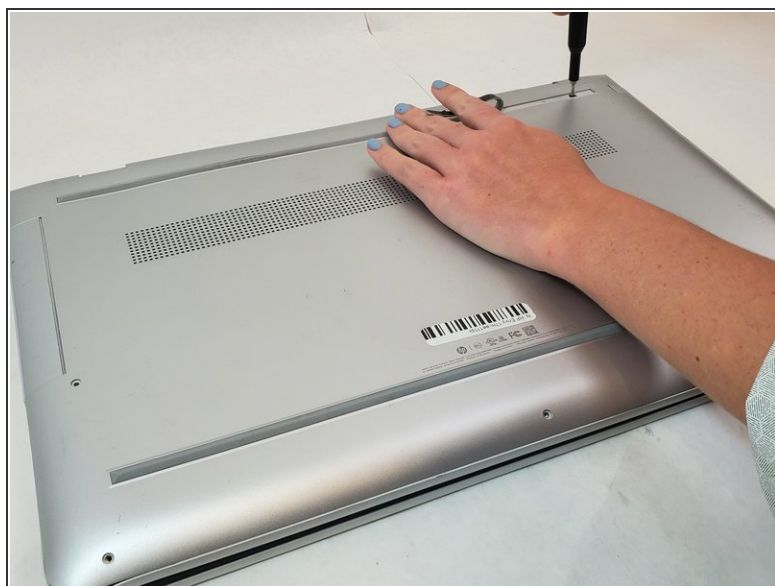
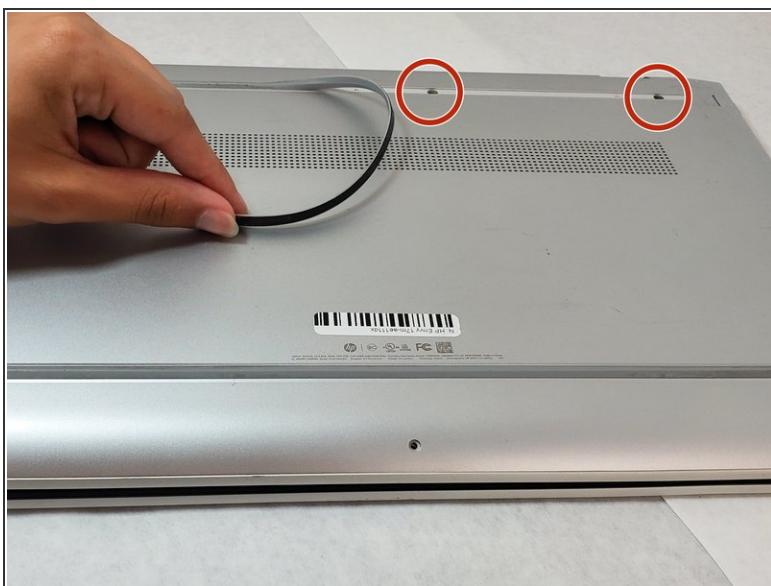
- Remove the plastic covering to the Disk Reader.
 - Locate the small hole on the side of the disk reader. Insert the T5 Torx head screwdriver (or device of similar thickness) to release the covering for the disk reader.
- ❗ If the button on the side is jammed, pry off the covering by using the iFixit Opening Tool.

Step 3



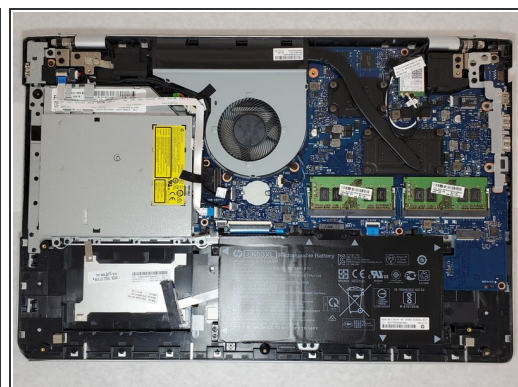
- Unscrew all visible screws.
 - Use the T5 Torx Screwdriver and remove the four visible 6.5mm screws on the bottom of the laptop.
 - One 2.5mm screw, is located where the disk reader was once located. Use a Phillips #00 screwdriver to remove the single screw that connects the bottom cover of the laptop to the bottom frame.

Step 4



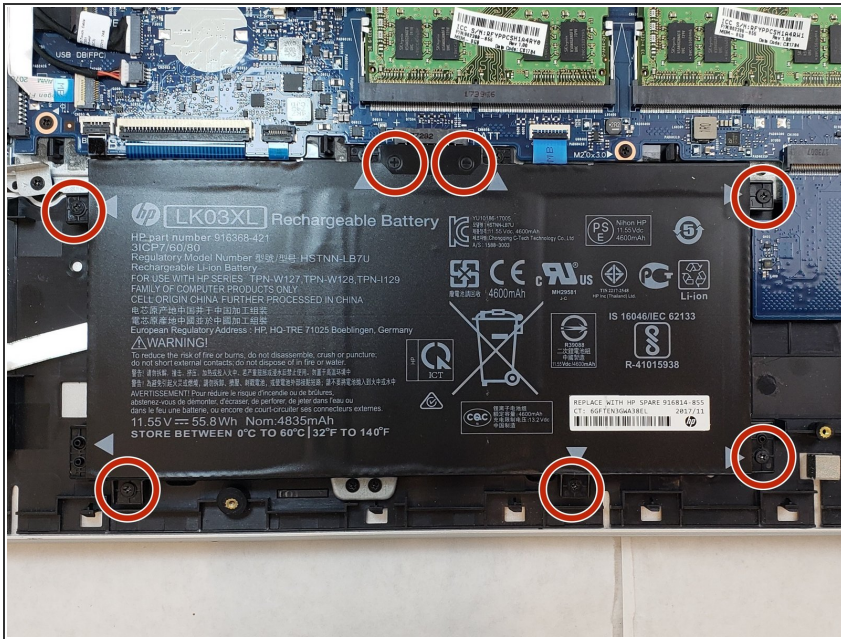
- Pry the gripper completely off to expose the two screws.
- Remove the 2.5mm screws under the gripper nearest to the hinge using the Phillips #00 screwdriver.

Step 5



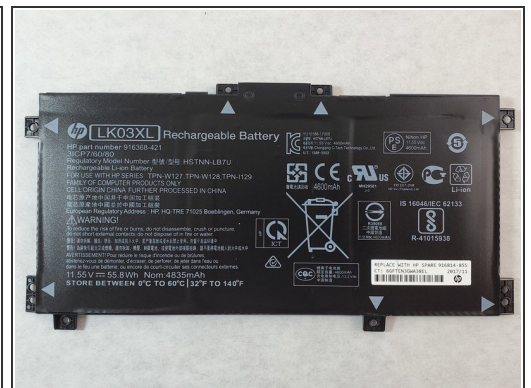
- Use the iFixit opening tool to pry off the back cover.
- ⓘ Ensure that you go all the way around the laptop with the tool to take it off.

Step 6 — Battery



- Use a Phillips #00 screwdriver to remove all seven screws.

Step 7



- Unplug the battery from the connection port and remove the battery from the device.

To reassemble your device, follow these instructions in reverse order.