



HP Envy 17m-ae111dx CPU Fan Replacement

How to fix the CPU fan in an HP Envy 17m-ae111dx.

Written By: Austin Greene



INTRODUCTION

Is your HP Envy 17m-ae111dx getting really hot? If so, here is the guide to fix the problem with a replacement of the CPU fan. You will need is the iFixit Opening Tool, a 00 Phillips-head Screwdriver, and a T5 Torx-Head Screwdriver.



TOOLS:

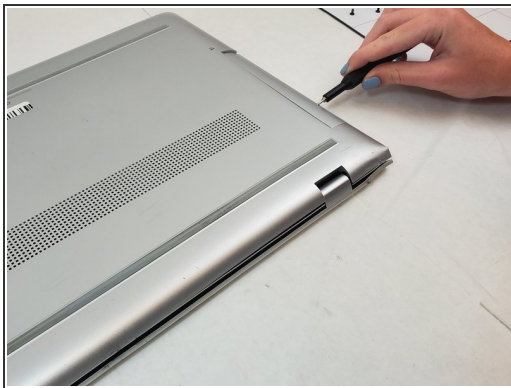
- [iFixit Opening Tools](#) (1)
 - [Phillips #00 Screwdriver](#) (1)
 - [T5 Torx Screwdriver](#) (1)
-

Step 1 — Back Cover



- ❗ Power off your laptop before beginning disassembly.
- Place the laptop on its back.

Step 2



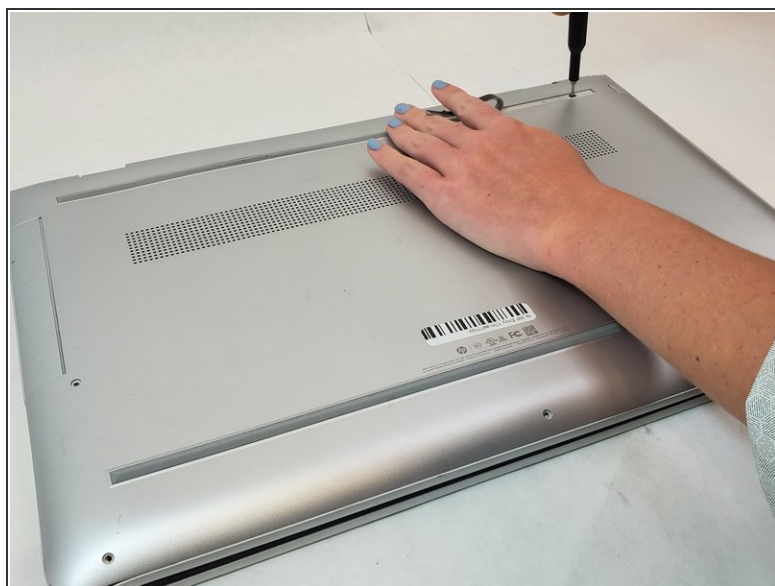
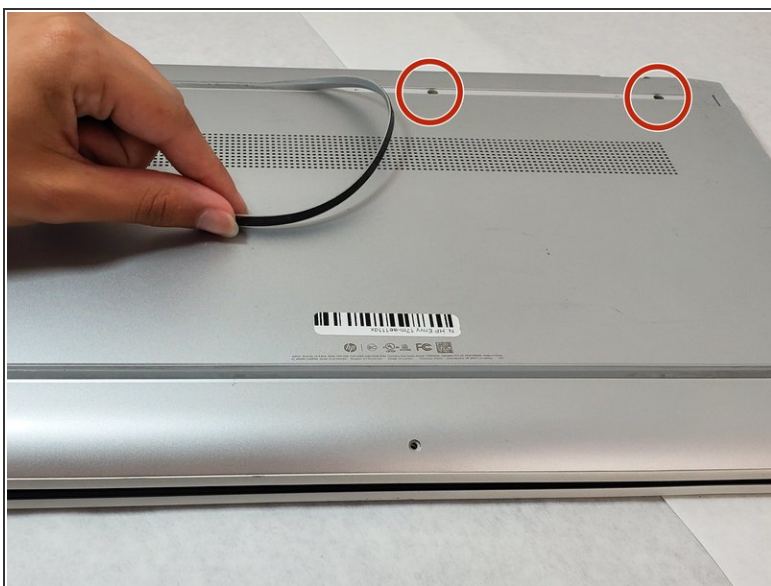
- Remove the plastic covering to the Disk Reader.
 - Locate the small hole on the side of the disk reader. Insert the T5 Torx head screwdriver (or device of similar thickness) to release the covering for the disk reader.
- ❗ If the button on the side is jammed, pry off the covering by using the iFixit Opening Tool.

Step 3



- Unscrew all visible screws.
 - Use the T5 Torx Screwdriver and remove the four visible 6.5mm screws on the bottom of the laptop.
 - One 2.5mm screw, is located where the disk reader was once located. Use a Phillips #00 screwdriver to remove the single screw that connects the bottom cover of the laptop to the bottom frame.

Step 4



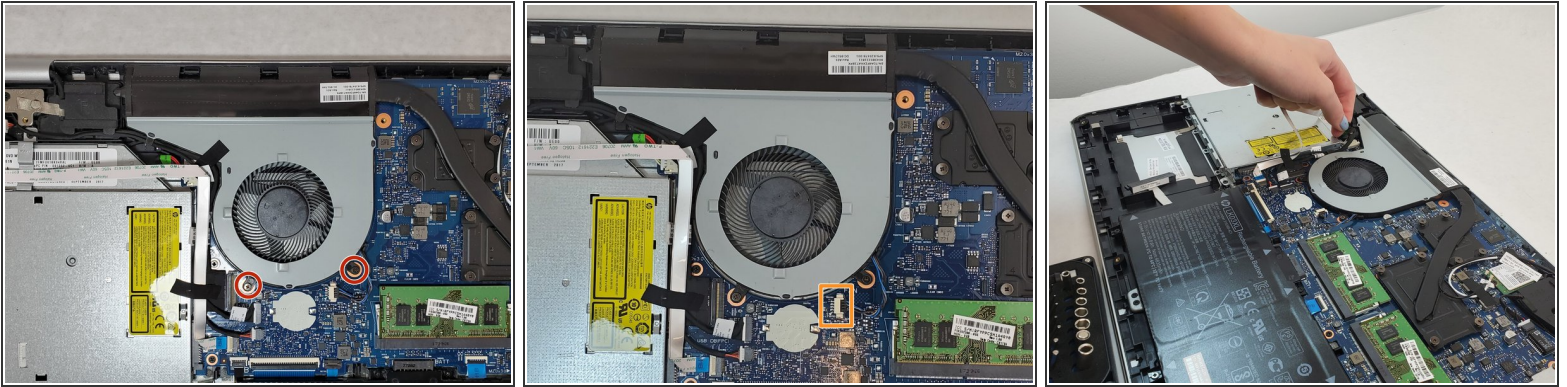
- Pry the gripper completely off to expose the two screws.
- Remove the 2.5mm screws under the gripper nearest to the hinge using the Phillips #00 screwdriver.

Step 5



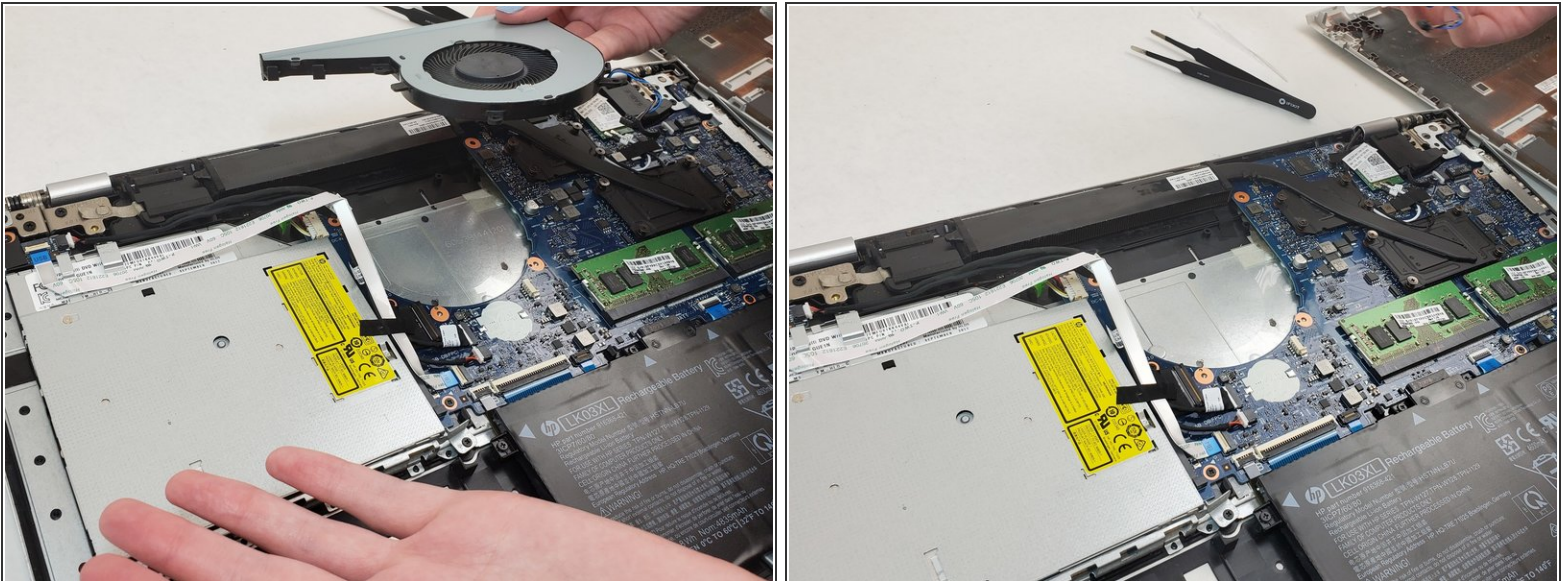
- Use the iFixit opening tool to pry off the back cover.
- ⓘ Ensure that you go all the way around the laptop with the tool to take it off.

Step 6 — CPU Fan



- Use the Phillips #00 screwdriver to remove the two 5.5mm screws that secure the fan.
- Unplug the wire that is connected to the fan and move the wires so they are out of the way of the fan.
- Remove the tape off of the fan that is holding the wires in place against the fan.

Step 7



- Remove the fan from the laptop, ensuring the wires are properly disconnected.

To reassemble your device, follow these instructions in reverse order.