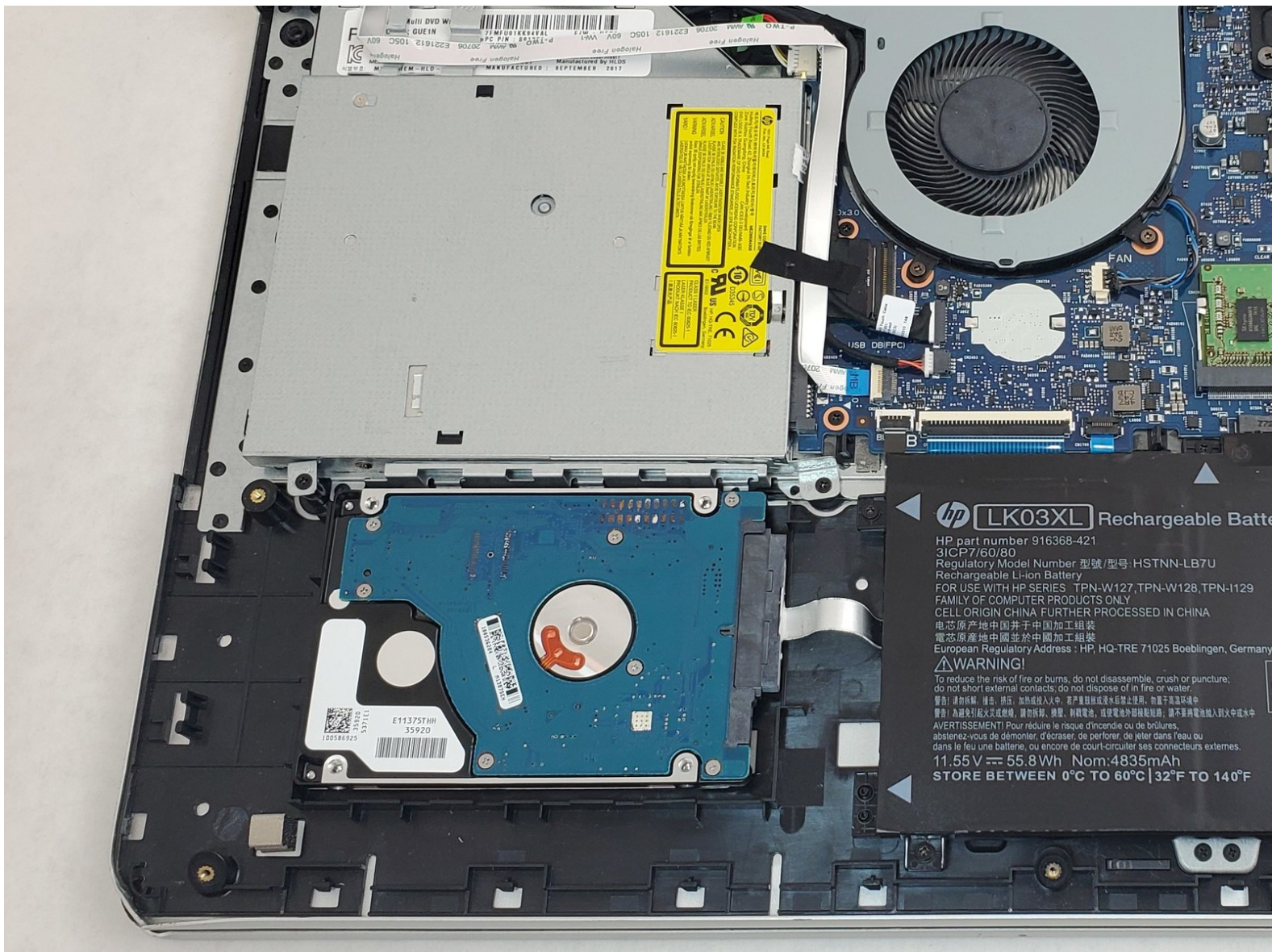




HP Envy 17m-ae111dx Hard Drive Replacement

This guide will show you how to replace the hard drive in your HP Envy 17m-ae111dx.

Written By: Kyle Fox



INTRODUCTION

The Hard Drive or Solid State Drive (SSD) is the physical device that stores your data on your computer. This guide will show you how to replace it starting from a fully assembled device. You will need a Hard Drive **or** SSD to complete this guide and replace the current Hard Drive. You will need is the iFixit Opening Tool, a #00 Phillips-head Screwdriver, and a T5 Torx-Head Screwdriver.



TOOLS:

- [iFixit Opening Tools](#) (1)
- [Phillips #00 Screwdriver](#) (1)
- [T5 Torx Screwdriver](#) (1)



PARTS:

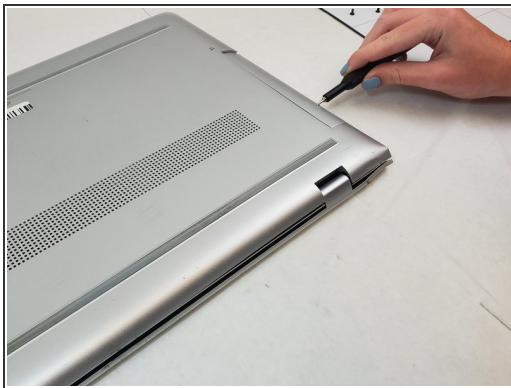
- [2.5" SATA Hard Drive](#) (1)

Step 1 — Back Cover



- ❗ Power off your laptop before beginning disassembly.
- Place the laptop on its back.

Step 2



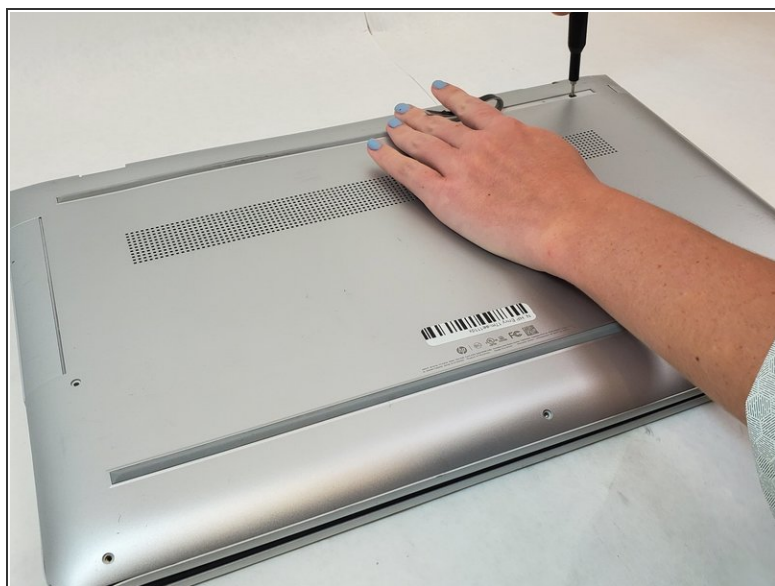
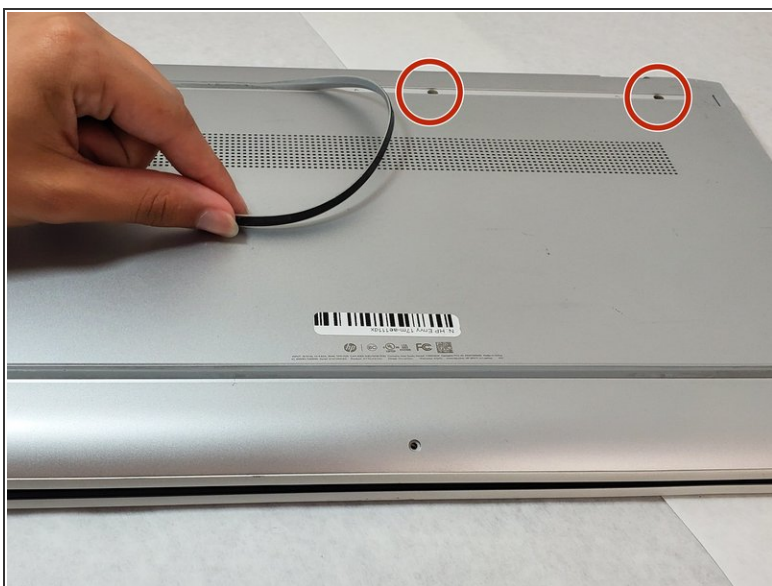
- Remove the plastic covering to the Disk Reader.
 - Locate the small hole on the side of the disk reader. Insert the T5 Torx head screwdriver (or device of similar thickness) to release the covering for the disk reader.
- ❗ If the button on the side is jammed, pry off the covering by using the iFixit Opening Tool.

Step 3



- Unscrew all visible screws.
 - Use the T5 Torx Screwdriver and remove the four visible 6.5mm screws on the bottom of the laptop.
 - One 2.5mm screw, is located where the disk reader was once located. Use a Phillips #00 screwdriver to remove the single screw that connects the bottom cover of the laptop to the bottom frame.

Step 4



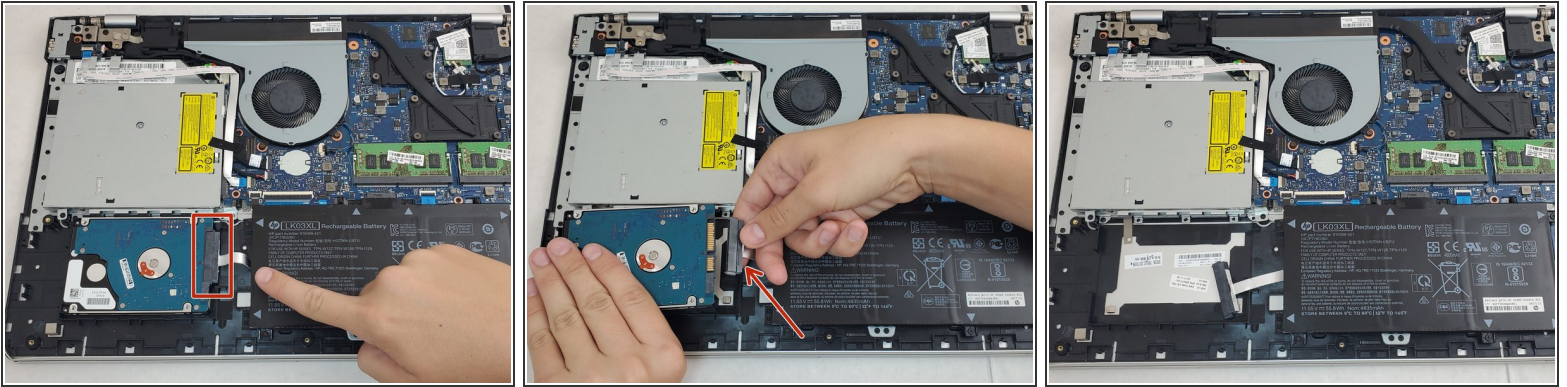
- Pry the gripper completely off to expose the two screws.
- Remove the 2.5mm screws under the gripper nearest to the hinge using the Phillips #00 screwdriver.

Step 5




- Use the iFixit opening tool to pry off the back cover.
- ⓘ Ensure that you go all the way around the laptop with the tool to take it off.

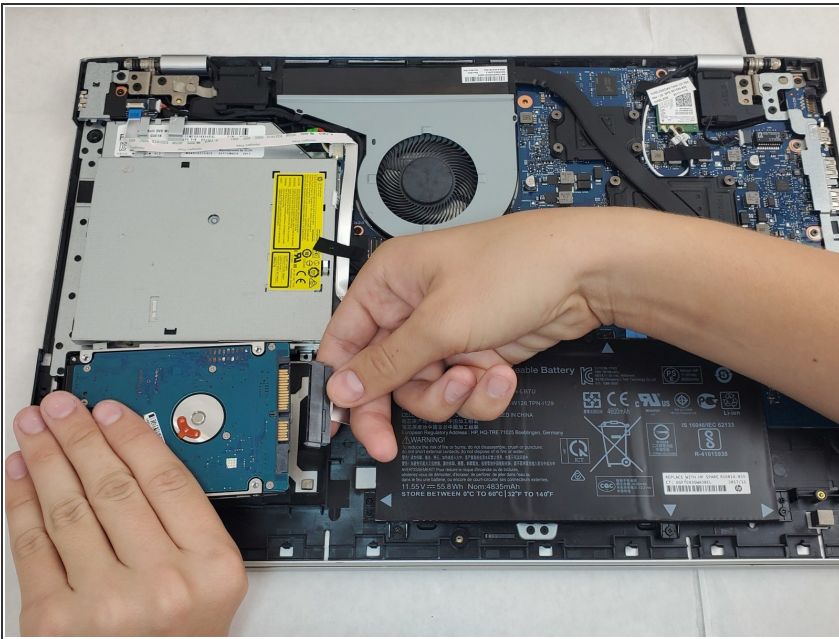
Step 6 — Hard Drive



- Unplug the cable that connects the hard drive to the motherboard.

 Grab from the base of the cable and not from the wire.

Step 7



- Remove the hard drive from the device.

To reassemble your device, follow these instructions in reverse order.