



HP Envy 4-1105dx Battery Replacement

Replace the battery in your HP Envy 4-1105dx.

Written By: Parvathy Nambidi



INTRODUCTION

Use this guide to give a new lease on life to your HP device by replacing the battery. If the battery does not charge past a low level or shuts down unexpectedly, it may be time to replace it. This guide provides detailed instructions for removing the battery from your device.



TOOLS:

- [Phillips #1 Screwdriver](#) (1)
- [iFixit Opening Tools](#) (1)
- [Spudger](#) (1)



PARTS:

- [HP TouchPad Battery](#) (1)

Step 1 — Battery



- ❗ Power off the device before beginning disassembly. Disconnect all external devices.
- Flip the device on its back.

Step 2



- Unscrew and remove the one 7.5 mm Phillips-head screw using Phillips #1 screwdriver.

Step 3



- Unscrew twelve 6.0 mm Phillips-head screws using Phillips #1 screwdriver.

Step 4



- Use the plastic opening tool (which is short and has a thin end for prying open device parts) to pry open the back case of the device.

Step 5



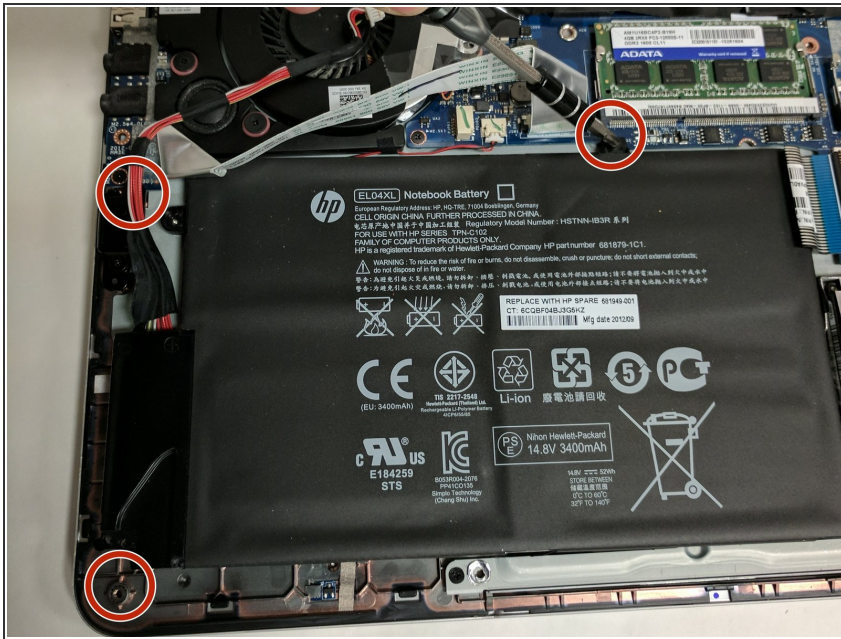
- Once the device is open, move the ribbon cable to the side.

Step 6



- Use the flat end of a plastic spudger to disconnect the battery cable from its socket in the motherboard.

Step 7



- Unscrew and remove the three 4.0 mm Phillips-head screws that hold the battery in place, using a Phillips #1 screwdriver.

Step 8



- Lift the battery up and remove.
- ⚠ Removing the battery can dislodge the touchpad bracket. Place the battery carefully over the alignment pins.

To reassemble your device, follow these instructions in reverse order.