



HP Envy 4520 Glass Scanner Bed Replacement

This guide will show you how to replace the glass scanner bed in your HP Envy 4520.

Written By: Sage Davis



INTRODUCTION

This guide will show you how to replace the glass scanner bed.



TOOLS:

- [T10 Torx Screwdriver](#) (1)
 - [iFixit Opening Tools](#) (1)
-

Step 1 — Glass Scanner Bed



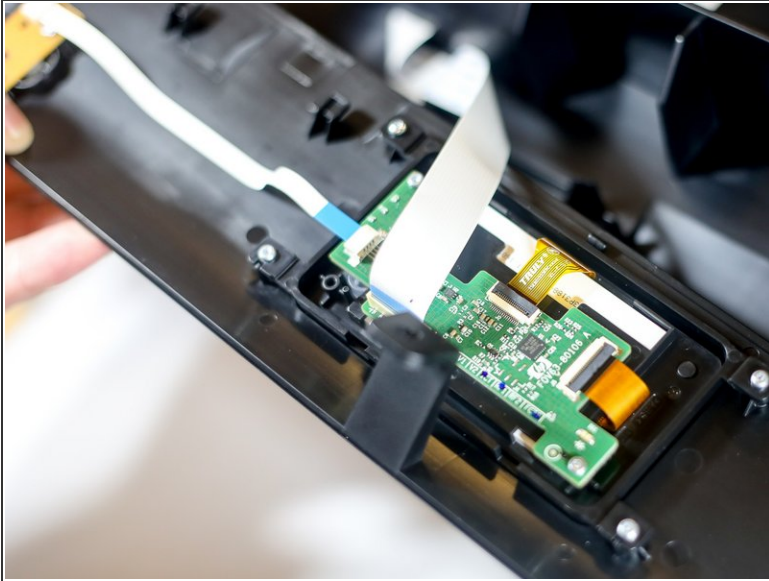
- Lift the entire scanner bed up.

Step 2



- Remove the T10, 13 mm center screw.

Step 3



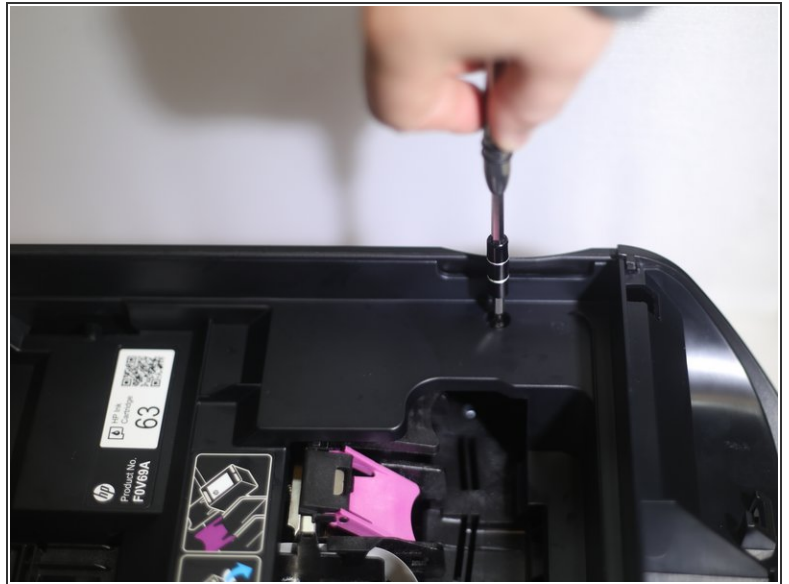
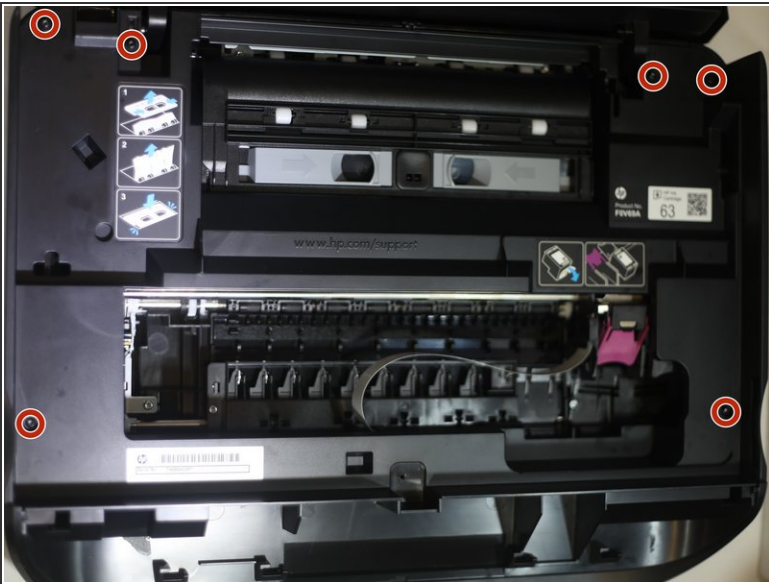
- Remove the large flat ribbon cable by pinching the top and bottom of the cable between thumb and index finger and pulling away from the mother board.
- Remove the small flat ribbon cable by pinching the top and bottom of the cable between thumb and index finger and pulling away from the mother board.

Step 4



- Remove the clip holding the scanner bed up by using the plastic opening tools. Prying the clip away from the the side of the scanner bed.

Step 5



- Remove the six 14 mm T10 Hex screws from the main plastic frame.

Step 6



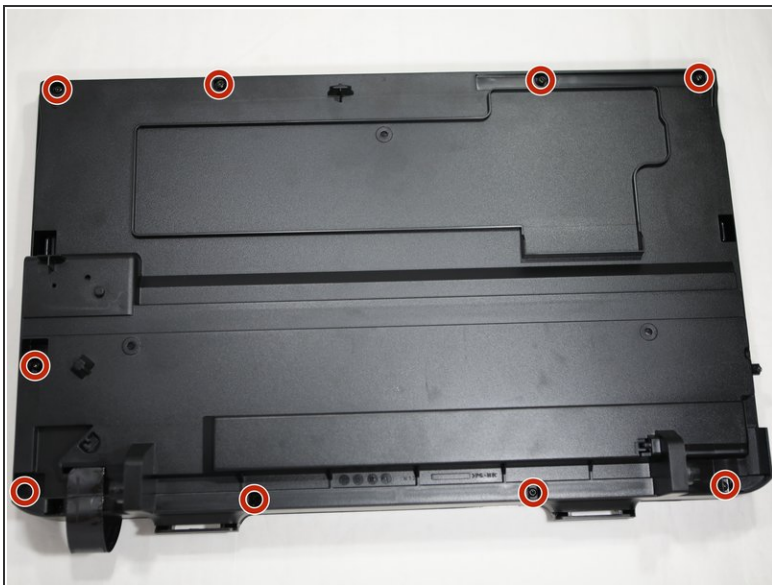
- Using the plastic opening tools, pry between the outer shell and the main plastic frame.

Step 7



- Remove the black flat ribbon cable by pinching the top and bottom of the cable between thumb and index finger and pulling it away from the port.
- Lift the scanner bed in an upward motion out of the printer.

Step 8



- Remove the nine 14 mm T10 Hex screws located around the edge of the scanner bed (Bottom).
- Pry the two plastic flanges outward to release the glass scanner bed.

Step 9



- Remove the glass scanner bed.
- ⓘ Then to reassemble align the small gear with the track and gently push down.

To reassemble your device, follow these instructions in reverse order.