



# HP Envy 5660 Printhead Replacement

How to replace the printhead for the HP Envy 5660.

Written By: Ryan Steakley



## INTRODUCTION

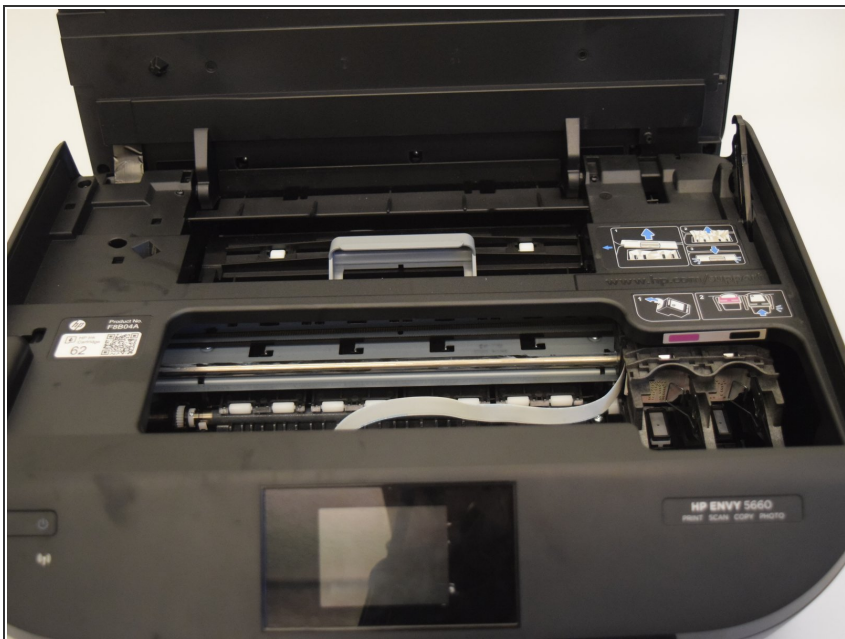
The print head of the HP Envy 5660 is the piece that puts the ink onto the paper inserted into the printer. This guide will go over the replacement of the print head.

---

### TOOLS:

- [T10 Torx Screwdriver](#) (1)
  - [Metal Spudger](#) (1)
-

## Step 1 — Printhead



- Open the printer so that the underside of the scanner is showing.

## Step 2



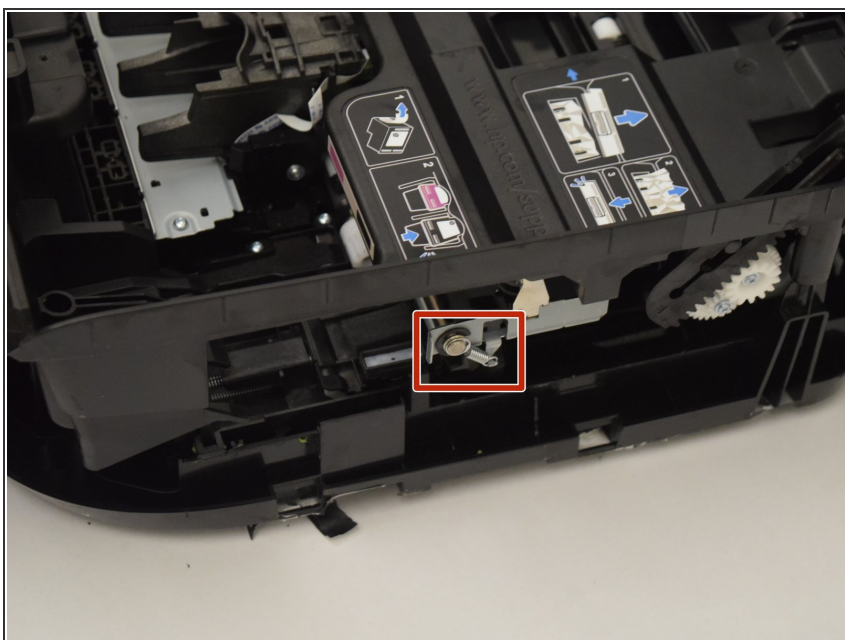
- Unscrew the black 11.5 mm screw closest to the front right corner using a T10 screw bit.

## Step 3



- Remove right side of the printer using a plastic opening tool or metal spudger.

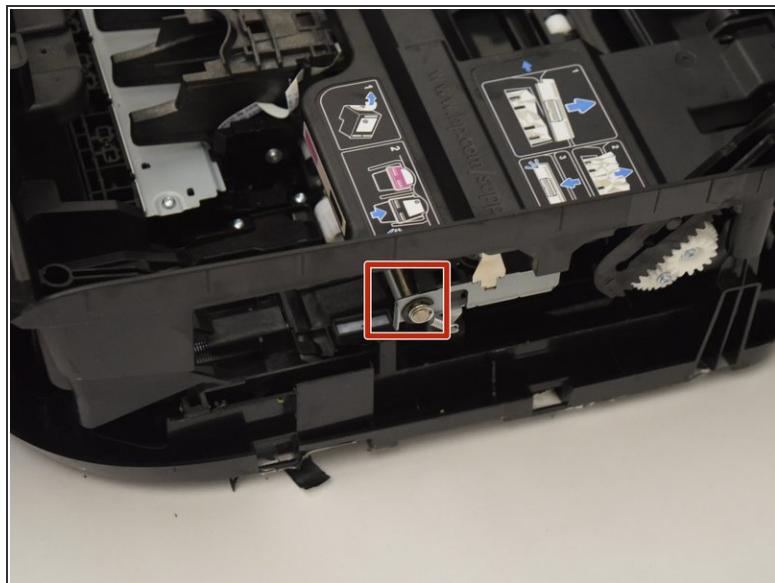
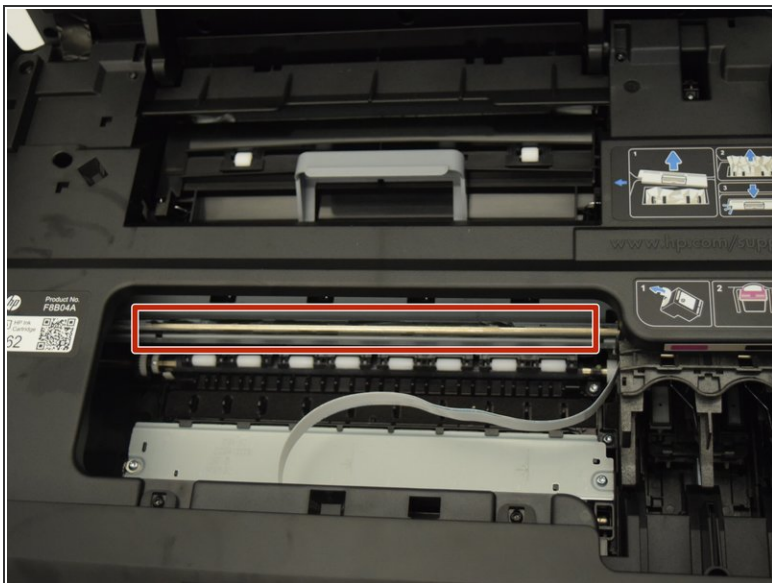
## Step 4



- Remove spring from the side of the print head rail using a metal spudger.

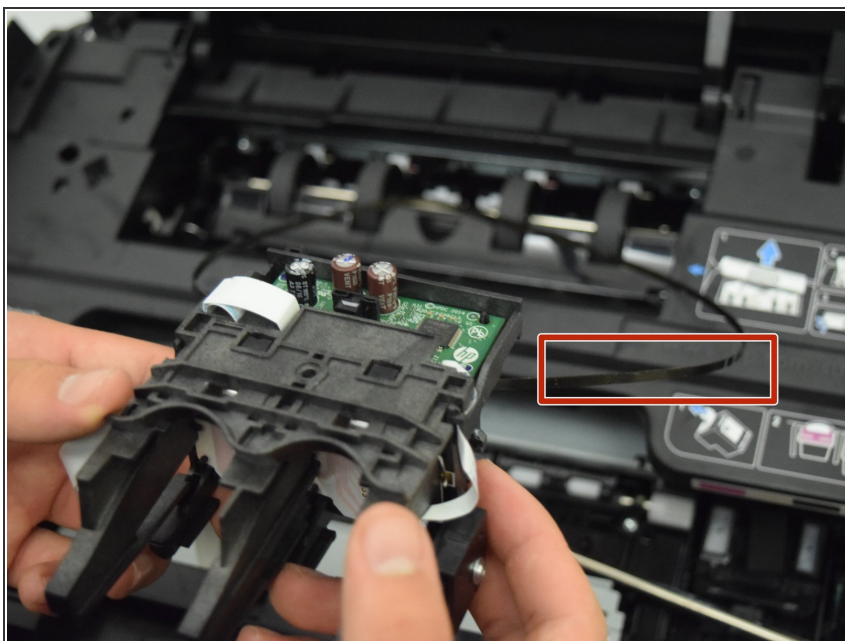


## Step 5



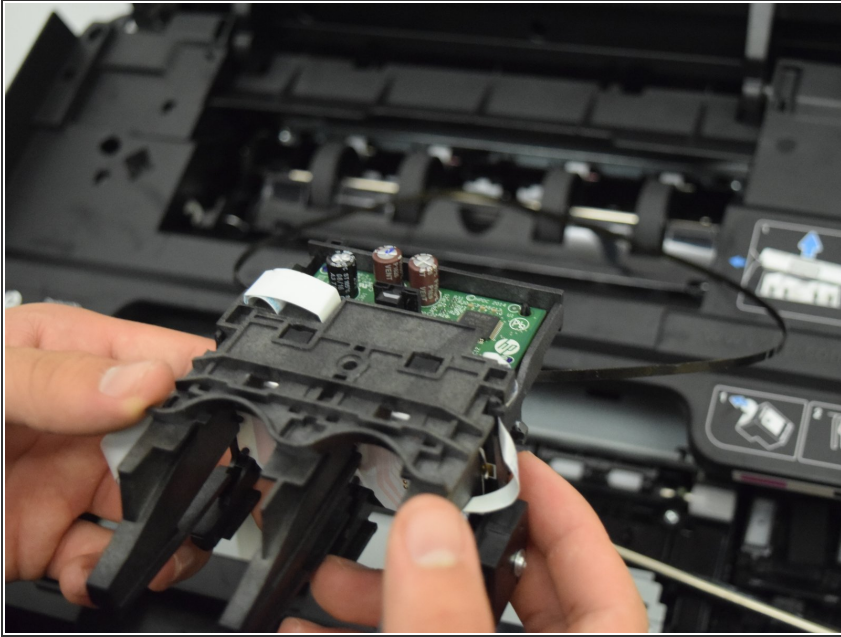
- Push the metal rail the print head rests on inwards to remove it from its bearings.

## Step 6



- Remove the belt from the back of the print head using a metal spudger.

## Step 7



- Remove the print head from the metal rail by sliding it off the rail.

To reassemble your device, follow these instructions in reverse order.