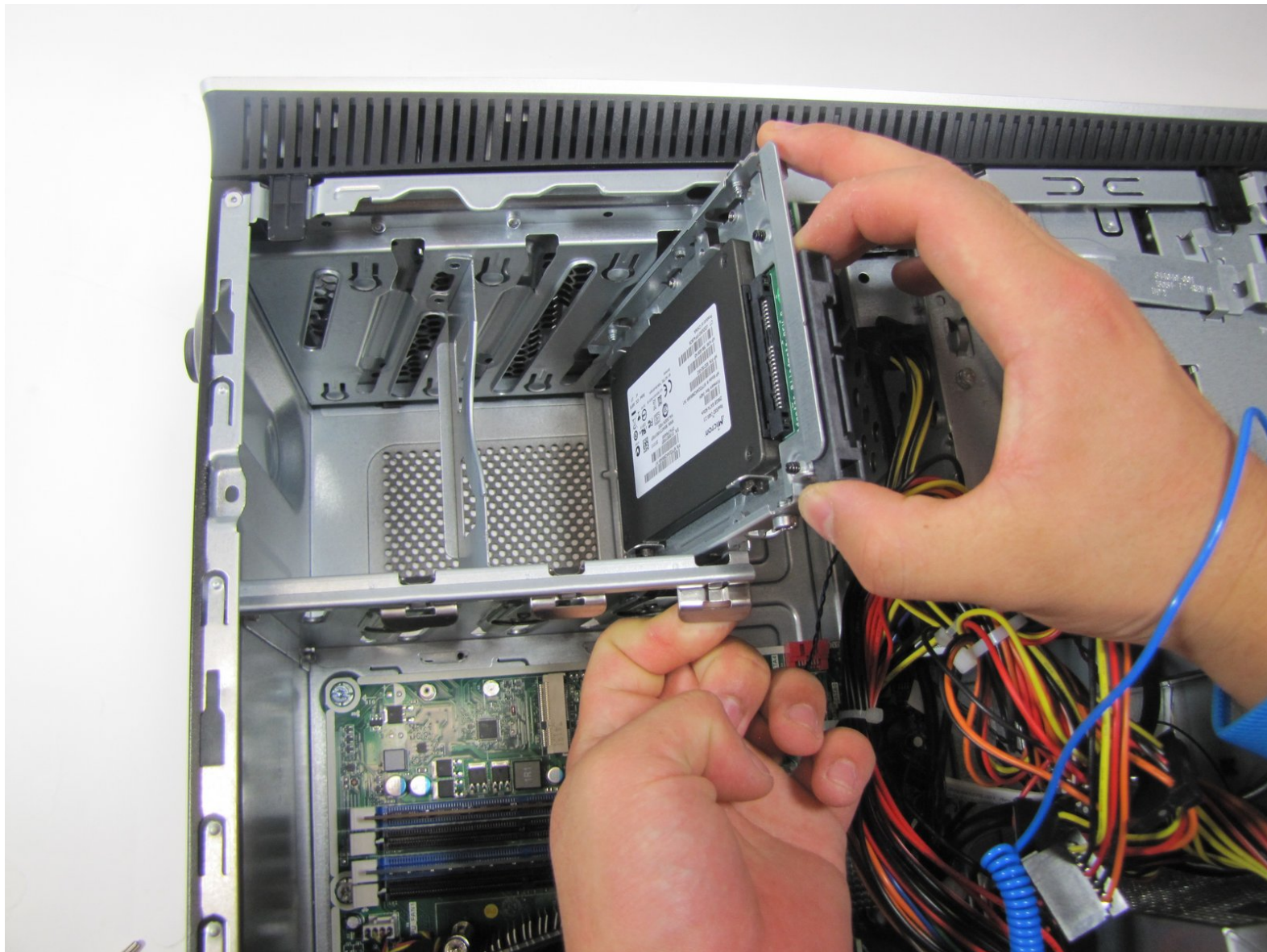




HP Envy 700-030qe Solid State Drive Replacement

This guide will show you how to replace the SSD in your HP Envy 700-030qe if it is broken or you want to upgrade it.

Written By: Chandler Warne



INTRODUCTION

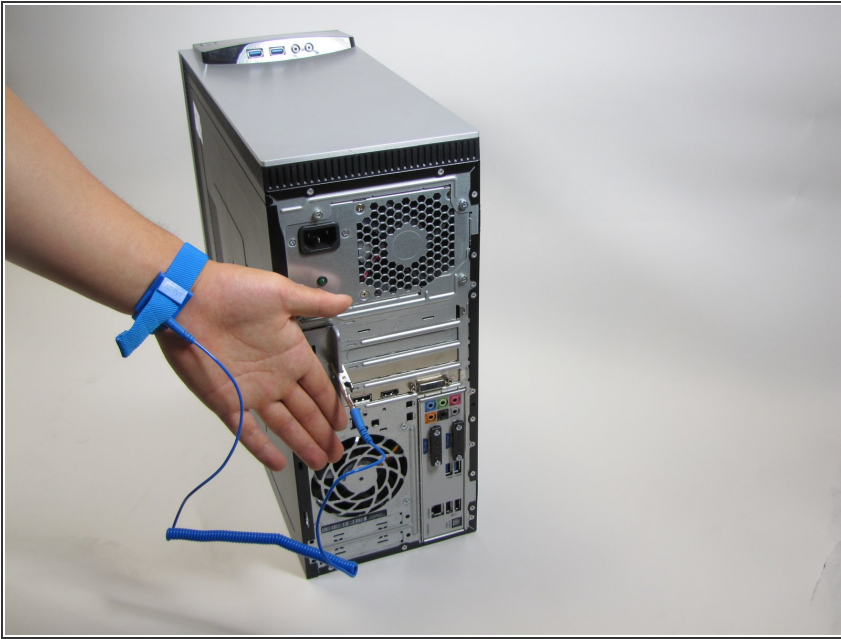
Whatever the reason is that you want to replace your hard drive, this guide will show you how to do just that! Whether it is broken or you want to upgrade your hard drive this guide will show you what to do.



TOOLS:

- [Anti-Static Wrist Strap](#) (1)
 - [T15 Torx Screwdriver](#) (1)
-

Step 1 — Solid State Drive



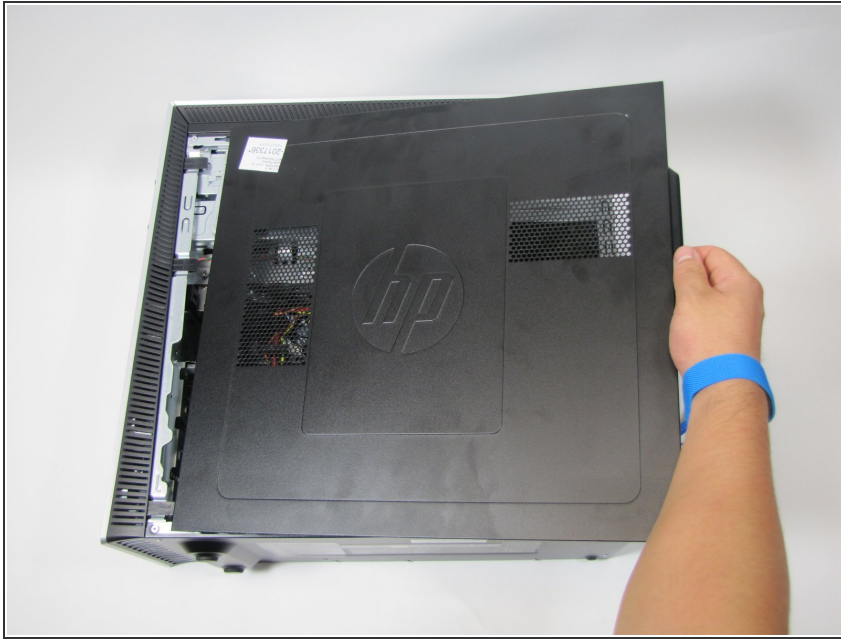
- Before beginning, it is good to wear an anti-static wrist band to prevent electrical components from getting harmed.
- Attach the anti-static wristband to your wrist, and clip the other end to an exposed piece of metal anywhere on the case.

Step 2



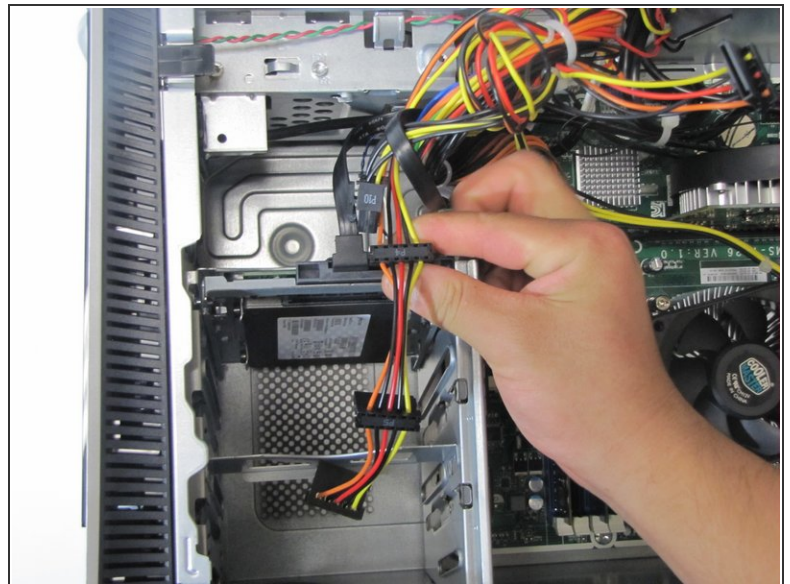
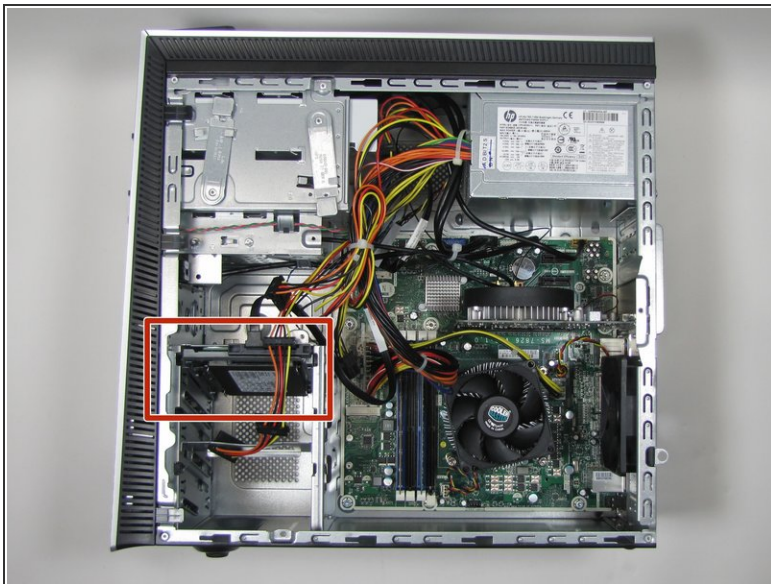
- Start by opening the device case by unscrewing the 10.5mm hand screw on the back of the computer.
- ⓘ If the hand screw is too tight, you may use the Torx T15 screwdriver to remove it.

Step 3



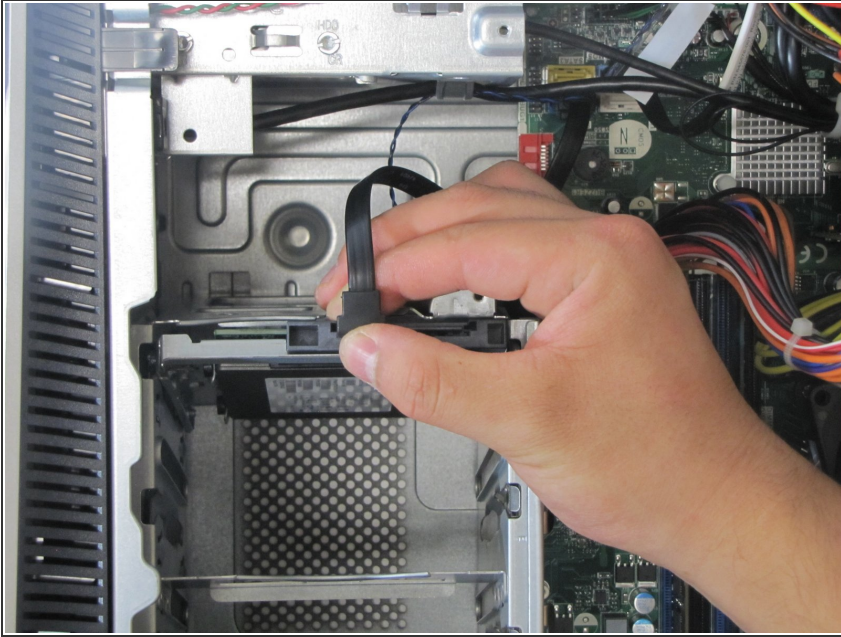
- Turn the computer onto its side to continue removing the case cover.
- Slide the cover off by sliding it to the right.

Step 4



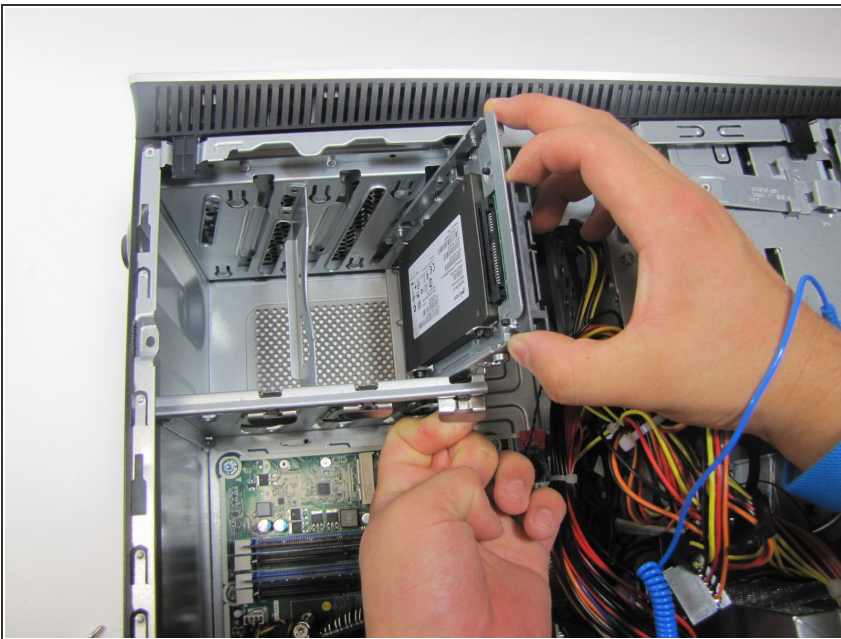
- Locate the SSD inside the open case.
- Unplug the SATA power cable from the hard drive by pulling straight up.

Step 5



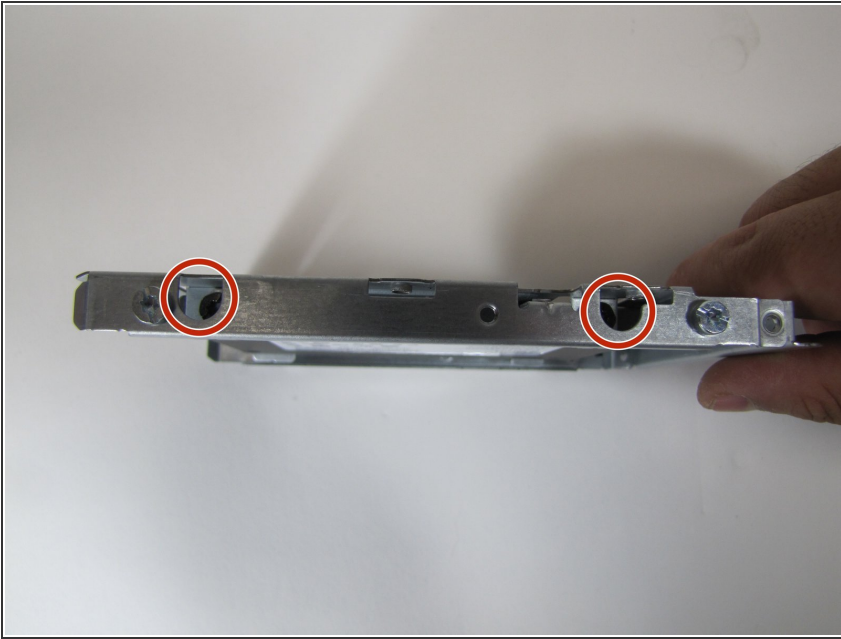
- Finish disconnecting the hard drive by unplugging the black SATA interface cable by pulling up.

Step 6



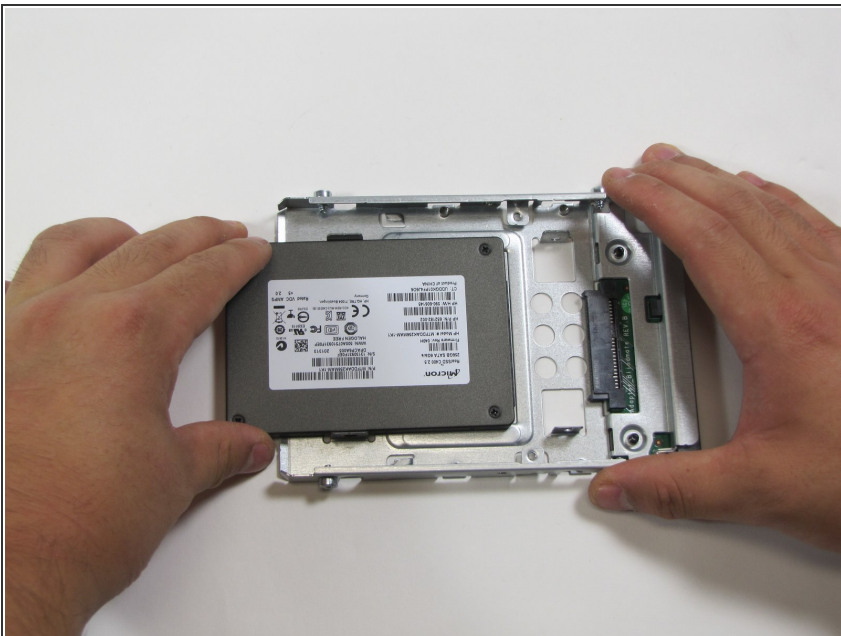
- To remove the SSD and its casing, pull out on the side silver tab.
- At the same time, pull up on the hard drive. It should slide out smoothly without much effort.

Step 7



- To completely remove the SSD from its casing, unscrew the four 5mm screws on opposite ends of the casing. Use a Torx T15 screw driver to accomplish this.
- ⓘ Notice that the screws to remove are the four screws inside the holes rather than the screws that are next to the holes.

Step 8



- Finally, slide the SSD out of the casing.

To reassemble your device, follow these instructions in reverse order.