



HP Envy Battery Replacement

Learn how to fix a non-charging HP Envy 15 x360 battery.

Written By: Connor French



INTRODUCTION

Has your battery seemingly died far earlier than expected in your HP Envy 15 x360 laptop? This guide will show you how to fix a common cause of a dead battery.



TOOLS:

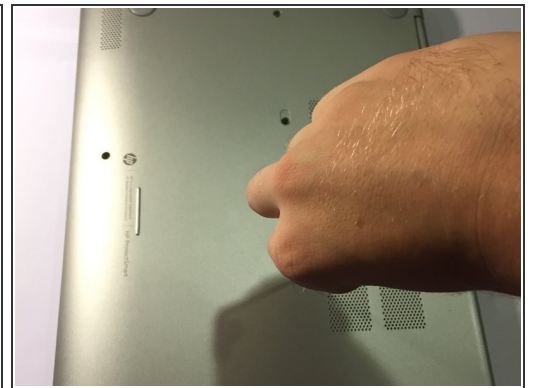
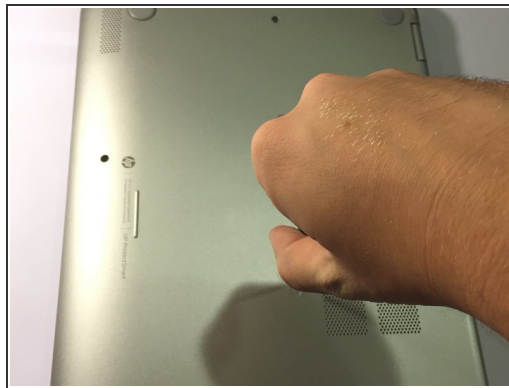
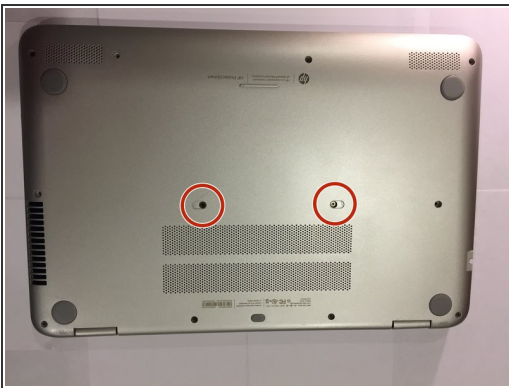
- [Small Phillips Head Screwdriver](#) (1)
-

Step 1 — Battery



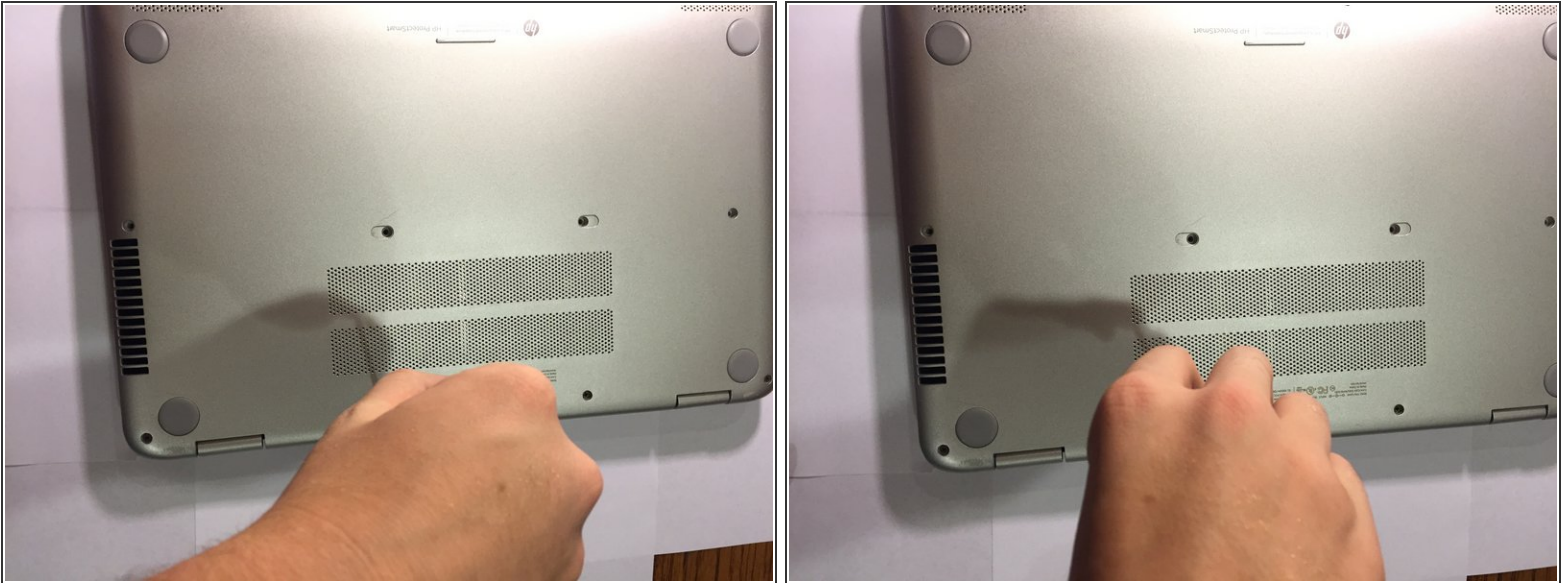
- Plug in your computer to charge and take a look at the light coming from near the charging port.
 - ⓘ If the light is a steady orange or white, your computer should be charging normally and this guide is no longer necessary.
 - ⓘ If the light is a blinking white, your computer is not charging properly and you should proceed to the next step.

Step 2



- Flip the laptop over on its back and remove the two depressed stickers in the middle to reveal the two central 6.0 mm Phillips-head screws.
- Remove the two 6.0 mm Phillips screws from the casing.

Step 3



- Continue unscrewing the rest of the 6.0 mm Phillips-head screws until there are no more connecting the keyboard to the casing.

Step 4



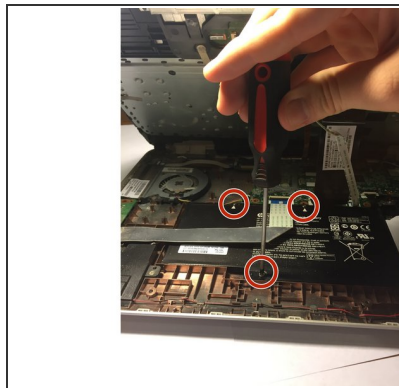
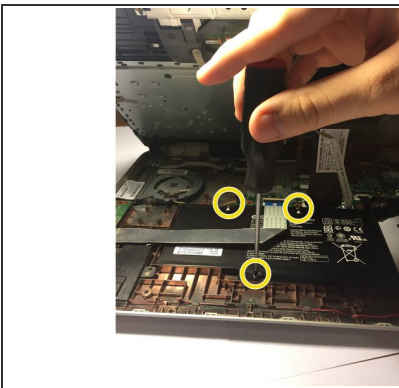
- Once all of the screws have come out, flip the laptop over and open the lid so that the keyboard is face up.
- Pop the keyboard from the sides and carefully lift it off of the parts underneath.
⚠ DO NOT pull the keyboard away from the rest of the laptop too quickly. There are various cords and wires connecting the keyboard section to the rest of the computer that should remain plugged in.

Step 5



- Carefully lay the keyboard section against the open screen of your laptop without unplugging anything.
- Check the inside of your laptop to make sure there are no glaringly obvious problems (insects, missing parts, scorched parts).

Step 6



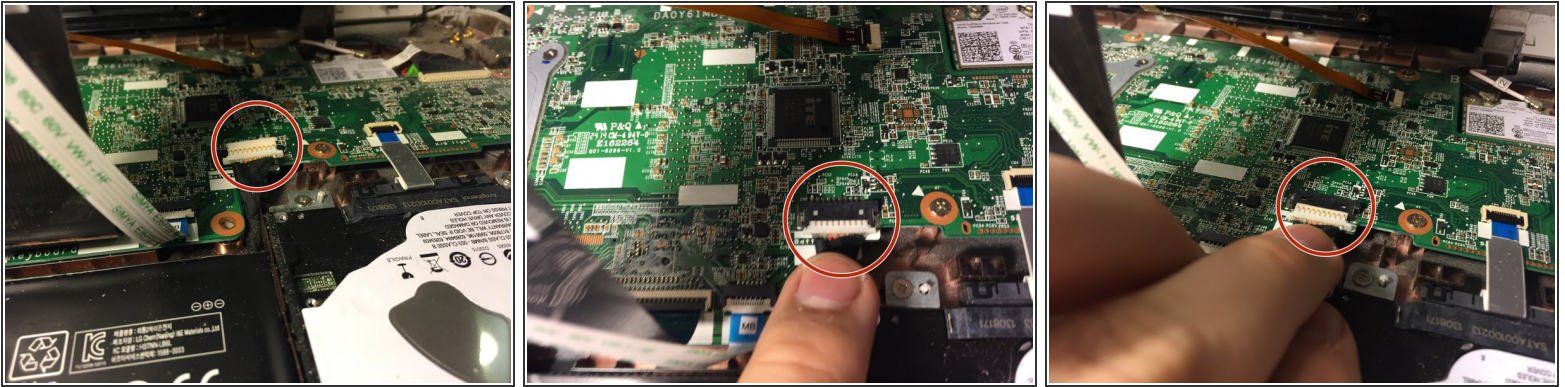
- Locate the battery and the three 4.0 mm Phillips-head screws that hold it in place.
- Unscrew these three screws and use the tab attached to the battery to remove it safely from the laptop.
- ⓘ Unplug the cord attaching the battery to the motherboard. This is the only cord that should be unplugged throughout the entire fix.

Step 7



- Once the battery is safely removed, plug the charging cord into the charging port on the side and plug the other end into the wall.
 - ⚠ **DO NOT** turn the computer on or touch any of the internal components during this step.
- If the light is on after plugging it in, you have just confirmed that something is wrong with the battery, which means you're on the right track!
- ① If the light on the side blinks upon plugging it in, the battery is not the problem. If that is the case, put your laptop back together and consult an expert.
- Unplug the charging cable.

Step 8



- Place the battery back where it was previously and find where it was plugged in.
- ⓘ *Due to general wear and tear, often this will become slightly unplugged, causing the laptop to fail to charge properly.*
- Plug the cable on the battery back into the port on the motherboard and make sure it is secured.

Step 9



- Run the earlier test that you performed on the laptop with the battery inside.
- ⚠ **DO NOT** turn the computer on or touch any of the internal components during this step.
- If the light comes on and doesn't blink, you have fixed the problem! Congratulations!
- If the light still blinks, you may have to purchase a new battery for your laptop.

To reassemble your device, follow these instructions in reverse order.