



# HP Envy M6-1205DX Front Plate Replacement

This guide explains how to remove the front panel (and the keyboard) on the HP Envy m6-1205dx laptop.

Written By: Ryan Hatton



---

## INTRODUCTION

This guide explains how to remove the front panel (and the keyboard) on the HP Envy m6-1205dx laptop.

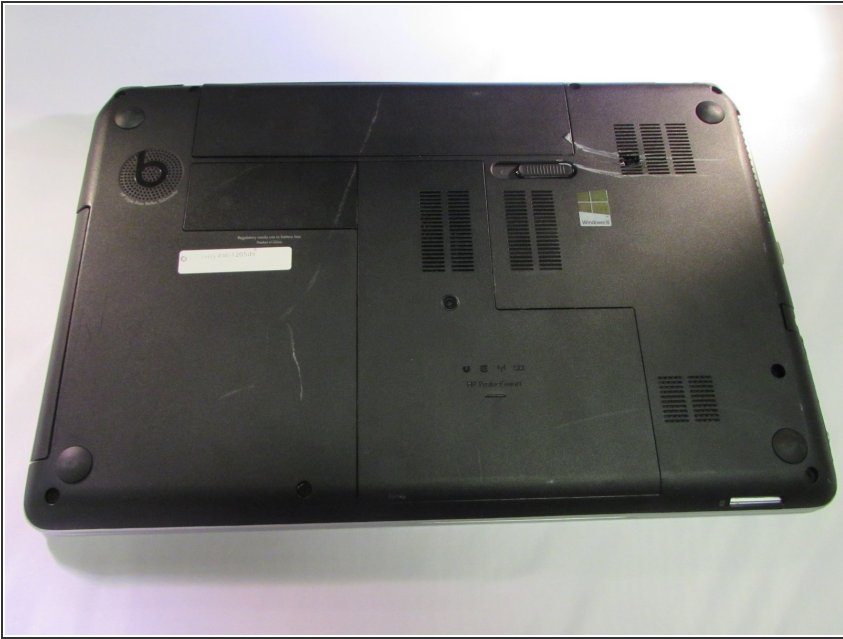
---



### TOOLS:

- [Phillips #1 Screwdriver](#) (1)
  - [iFixit Opening Tools](#) (1)
-

## Step 1 — Battery



- Lay the device face down to begin.

## Step 2



- Slide the release mechanism to the left to release the battery.

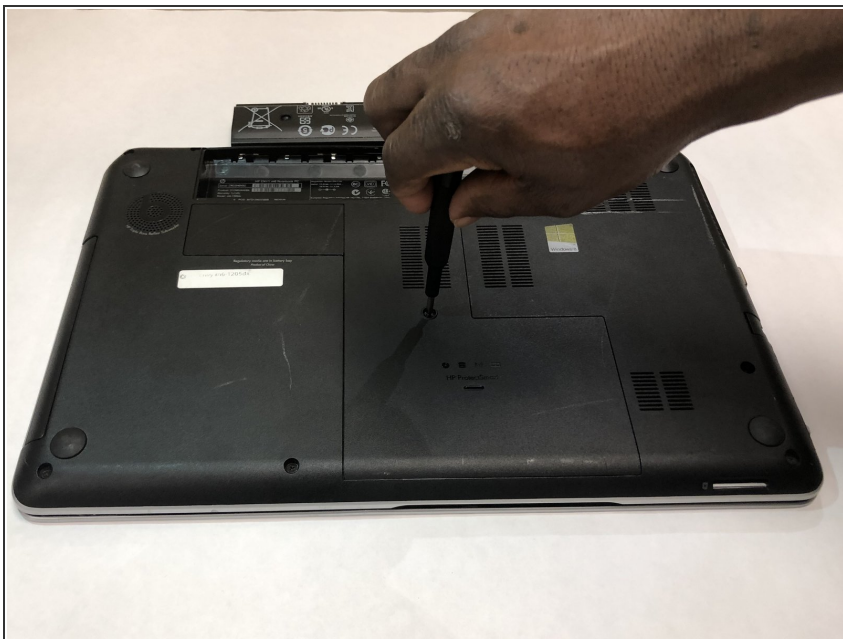


## Step 3



- Remove the battery.

## Step 4 — Back Panel



- Using a Phillips #1 screwdriver, remove the 8.6 mm screw.

## Step 5



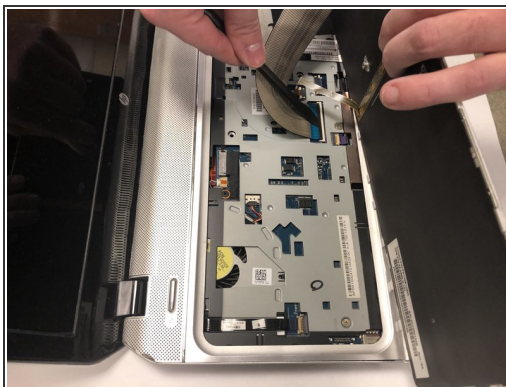
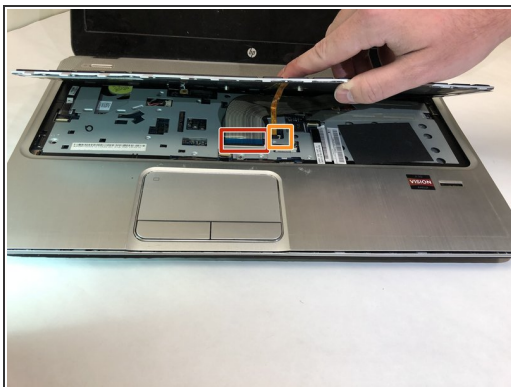
- Slide the center panel down to remove it.

## Step 6 — Front Plate



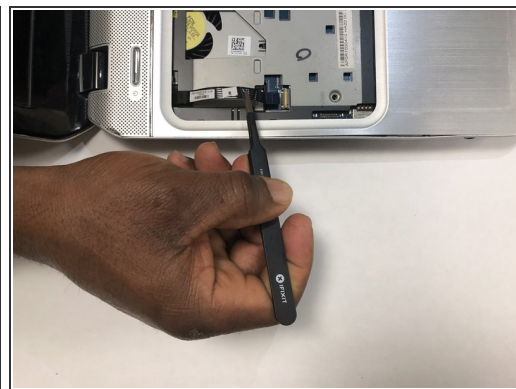
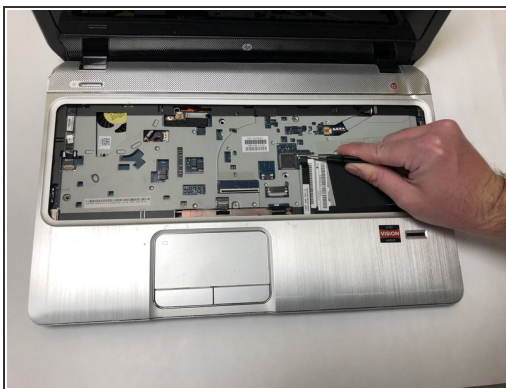
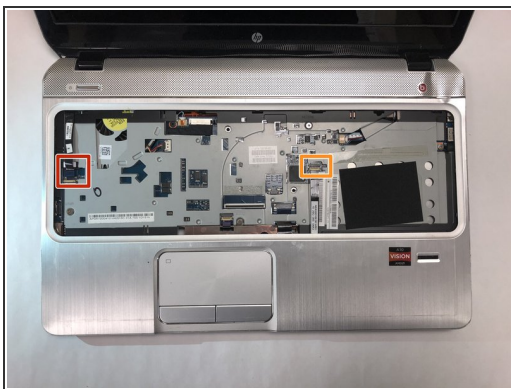
- Set the computer facing upwards again.
- Using the plastic opening tool gently pry the keyboard up.

## Step 7



- Flip the white tab on the large ribbon cable upward. Gently pull the large ribbon cable out to remove it.
- Gently pull the small ribbon cable out to remove it.

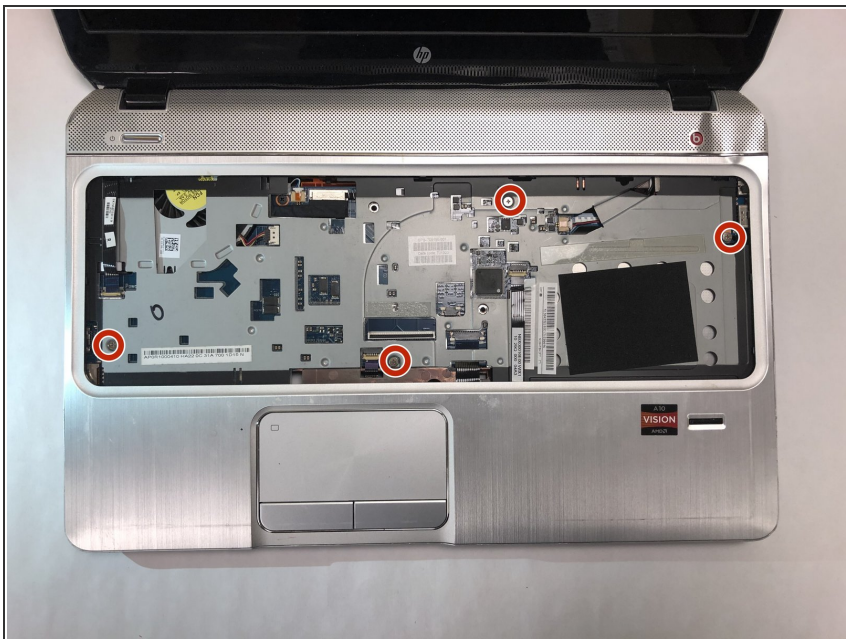
## Step 8



- Gently pull the tension cable to remove it.
- Gently pull the tension cable to remove it.

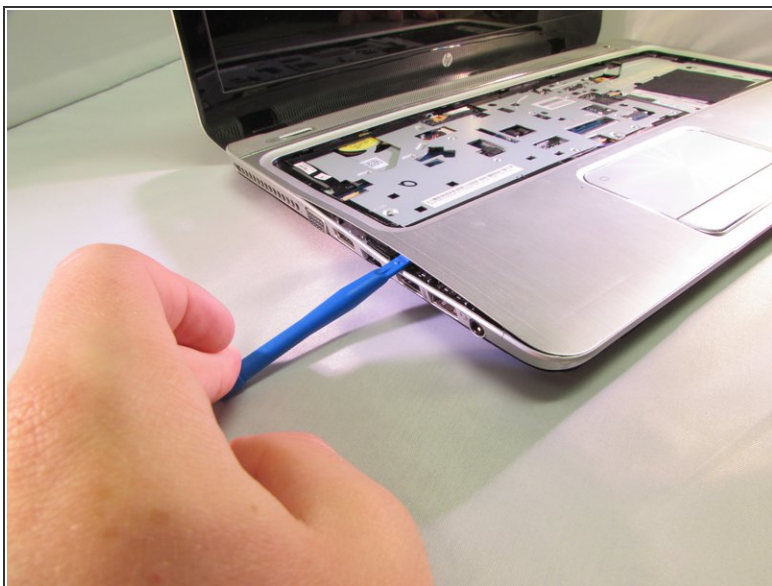


## Step 9



- Using a Phillips #1 screwdriver, remove the four 5.6 mm silver screws.

## Step 10



- Use the plastic opening tool to loosen the face plate from rest of the frame.
- Once you pry all of the snaps up lift off the face plate.

To reassemble your device, follow these instructions in reverse order.