



# HP Envy M6-1205DX Optical Drive Replacement

This guide explains how to replace the optical drive on the HP Envy m6-1205dx laptop.

Written By: Ryan Hatton



---

## INTRODUCTION

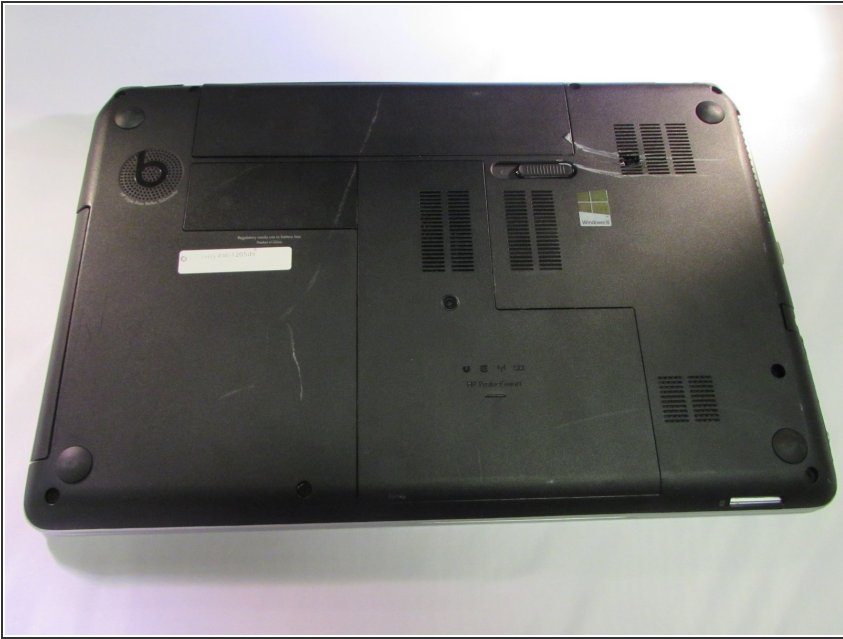
An optical drive may be rendered inoperable if the internal components stop functioning properly. This guide will show you how to replace the optical drive of your HP Envy m6-1205dx laptop.

---

### TOOLS:

- [Phillips #1 Screwdriver](#) (1)
  - [iFixit Opening Tools](#) (1)
-

## Step 1 — Battery



- Lay the device face down to begin.

## Step 2



- Slide the release mechanism to the left to release the battery.

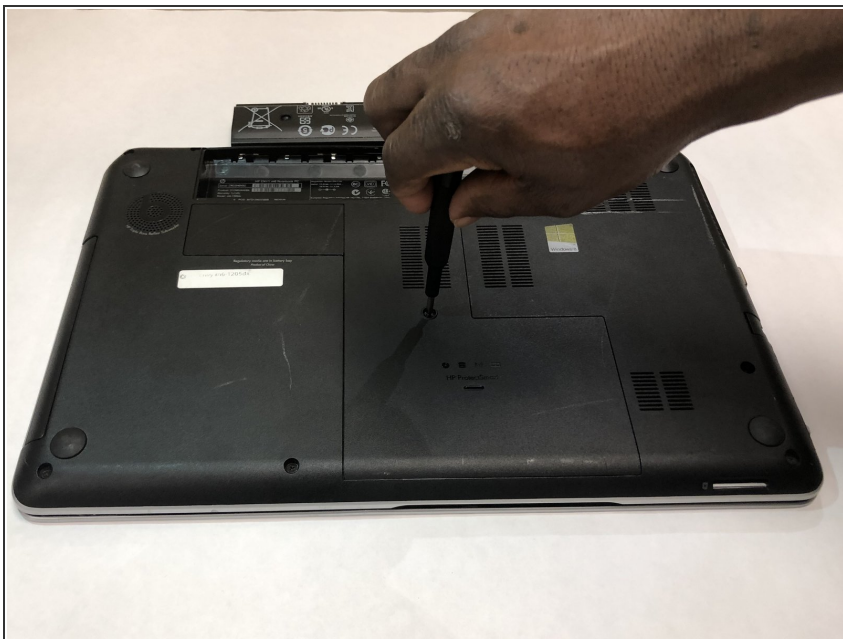


## Step 3



- Remove the battery.

## Step 4 — Back Panel



- Using a Phillips #1 screwdriver, remove the 8.6 mm screw.

## Step 5



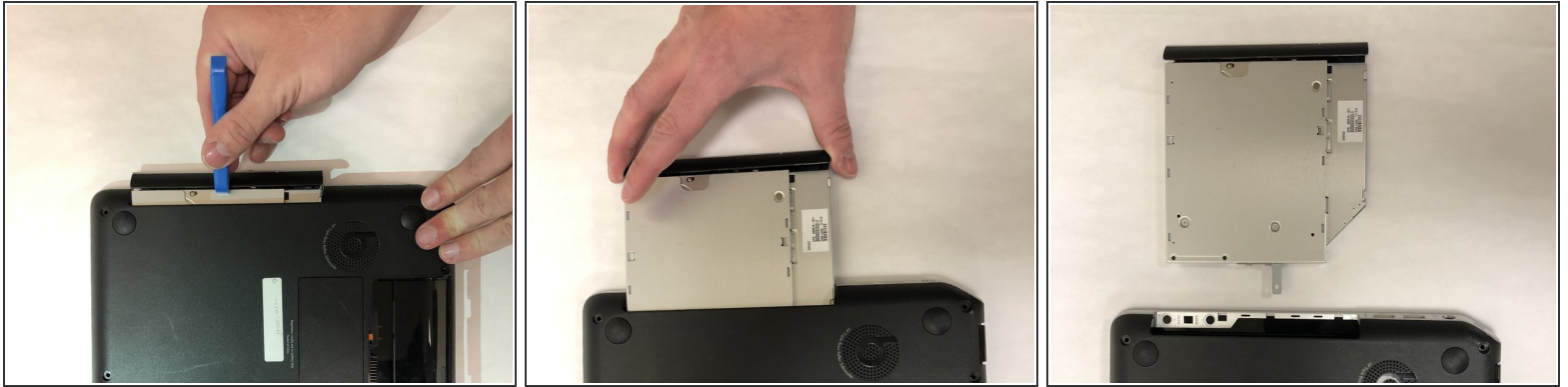
- Slide the center panel down to remove it.

## Step 6 — Optical Drive



- Using a Phillips #1, remove the 3.5 mm screw from the back of the optical drive.

## Step 7



- Use the iFixit opening tool to gently dislodge the optical drive.
- Gently pull the optical drive out to remove it.

To reassemble your device, follow these instructions in reverse order.