



HP Envy M6-1205DX Screen Replacement

This guide will show you how to replace your computer's screen.

Written By: Alex Wasilewski



INTRODUCTION

We will be showing you how to replace your screen if it is broken or damaged. This is a fairly long process which requires you to be careful.



TOOLS:

- [Tweezers](#) (1)
 - [iFixit Opening Tools](#) (1)
 - [Phillips #1 Screwdriver](#) (1)
 - [Phillips #00 Screwdriver](#) (1)
-

Step 1 — Battery



- Lay the device face down to begin.

Step 2



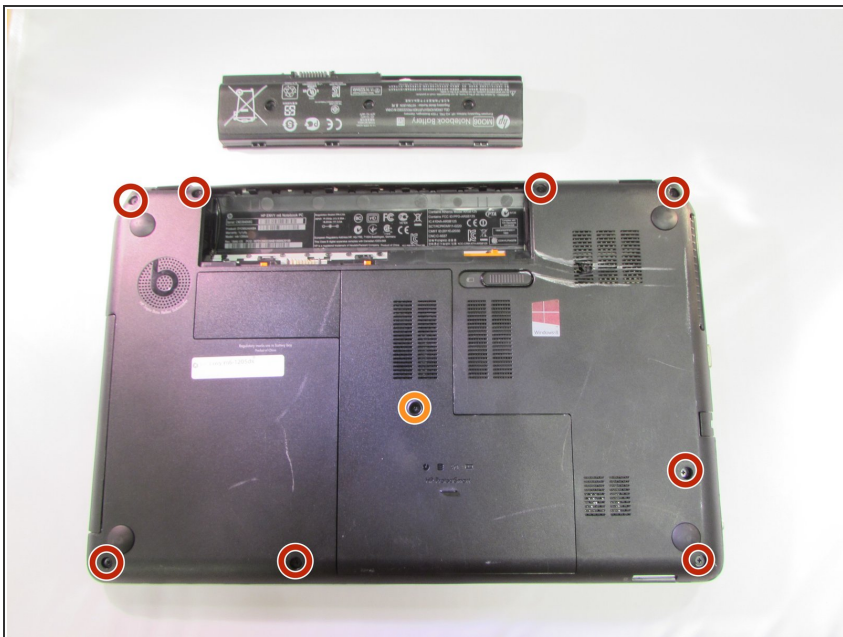
- Slide the release mechanism to the left to release the battery.

Step 3



- Remove the battery.

Step 4 — Touchpad



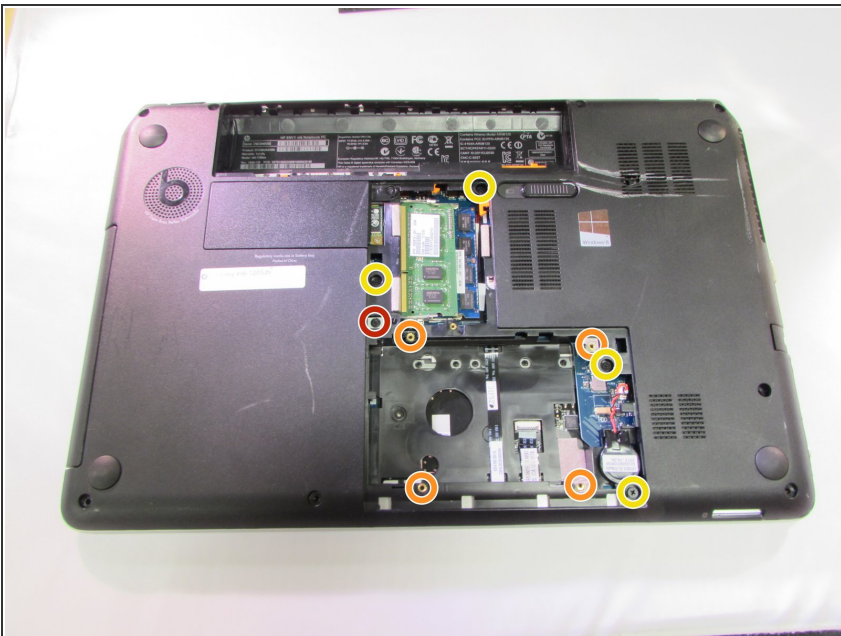
- Using a Phillips #1, remove the 8 10.6mm screws.
- Also using a Phillips #1, remove the 8.6mm screw.

Step 5



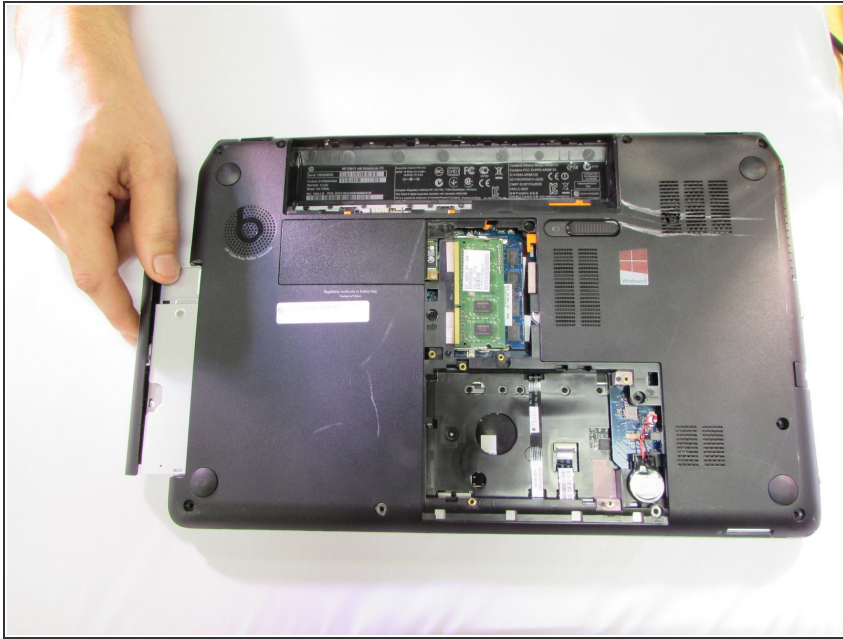
- Slide the center panel down to remove it.

Step 6



- Using a Phillips #1, remove the 3.5mm screw.
- ⓘ Our computer did not come with a hard drive so you should have one in the empty hole. We have marked where we believe the screws will be in orange.
- Using a Phillips #1, remove the four 10.6mm screws.

Step 7



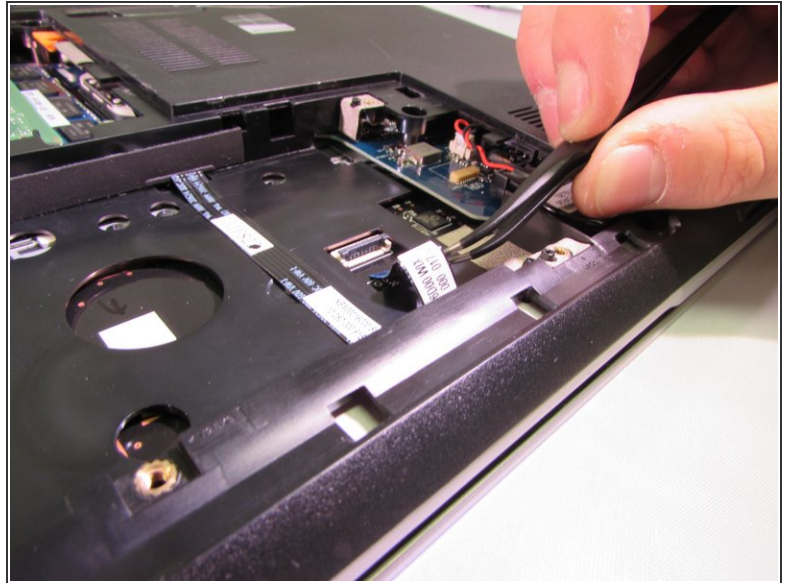
- Pull the disk drive out to remove it.

Step 8



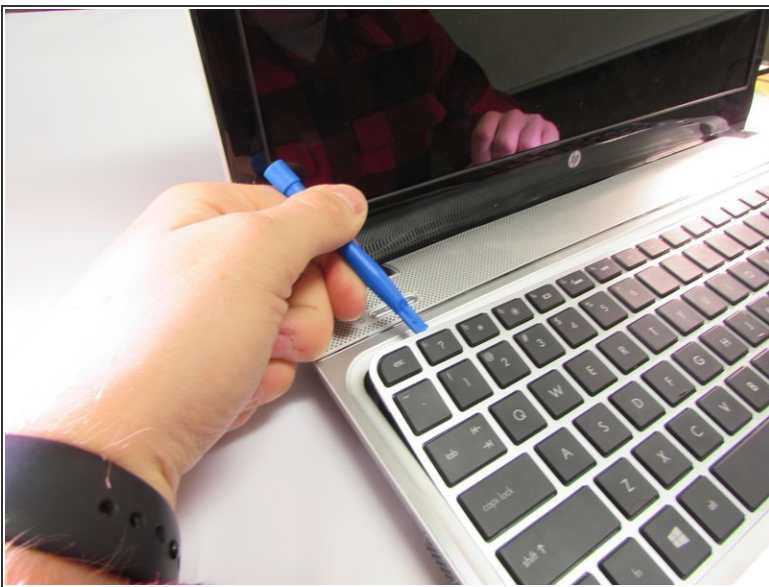
- Using a Phillips #1, remove the two 2.4mm screws.

Step 9



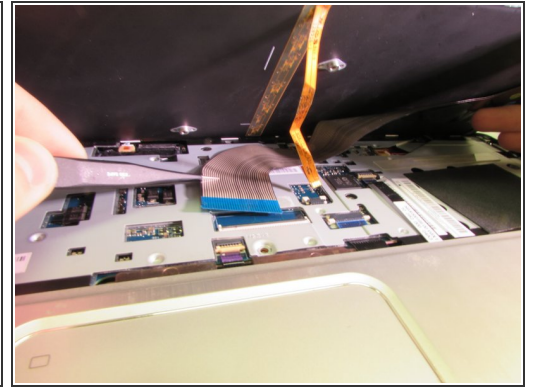
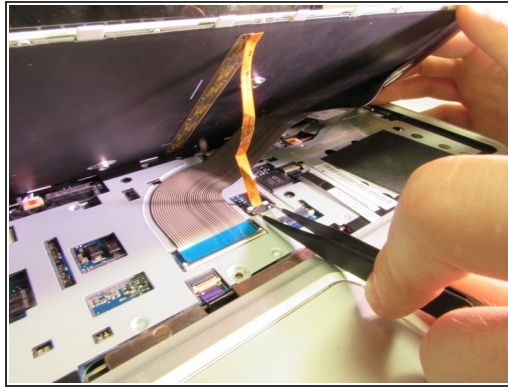
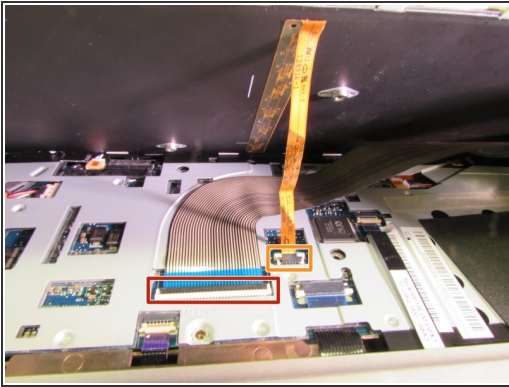
- Flip the black tab up on the clamp that holds the ribbon cable in place.
- Pull the cable back with your fingers or a pair of tweezers.

Step 10



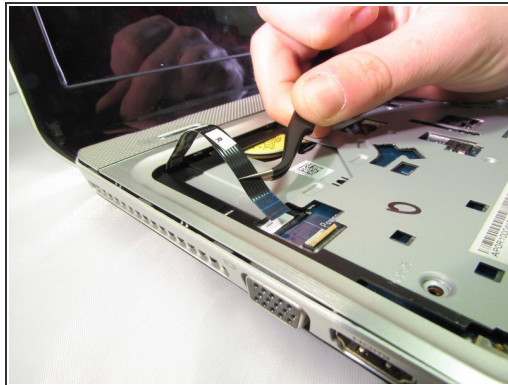
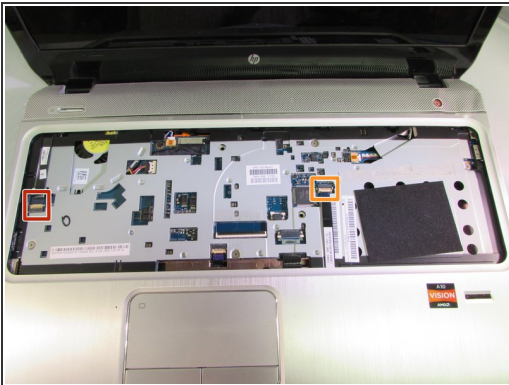
- Flip the computer back over
- Use the plastic opening tool to pry the keyboard up .

Step 11



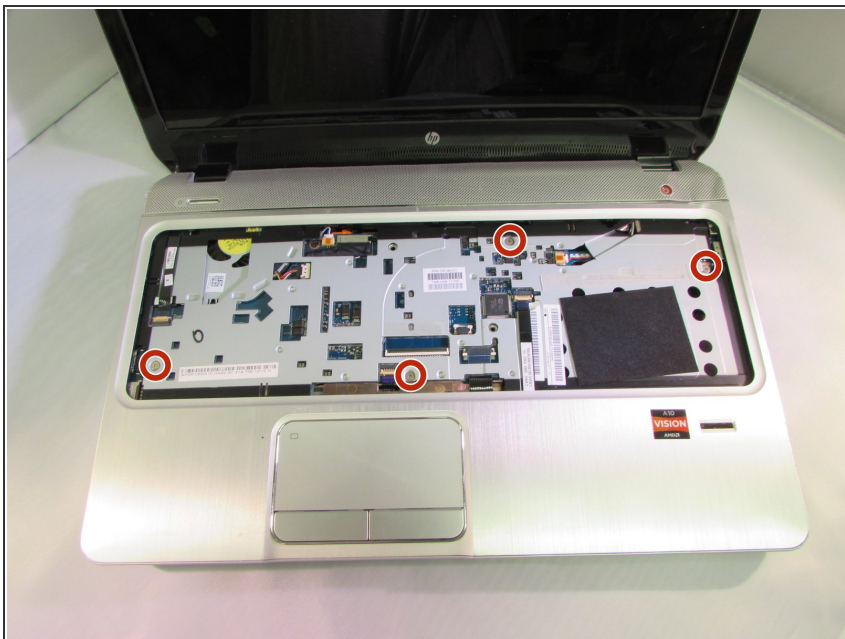
- Carefully lift the keyboard up.
- Flip up the black tab holding the large ribbon cable down.
- Push both sides of the small white tab forward to release the small ribbon cable.
- Pull both the cables out to remove them.
- Remove the keyboard.

Step 12



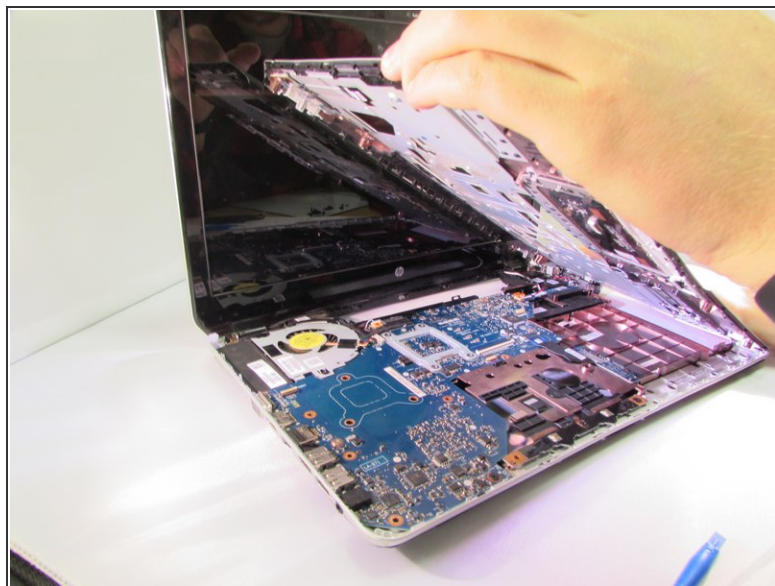
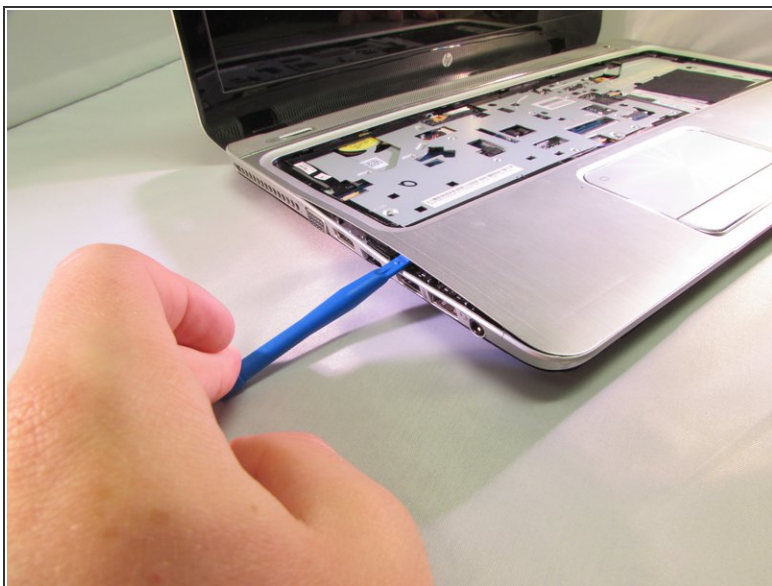
- Flip the small white tab up to release the ribbon cable.
- Pull to remove.
- Repeat the same steps for the other cable.

Step 13



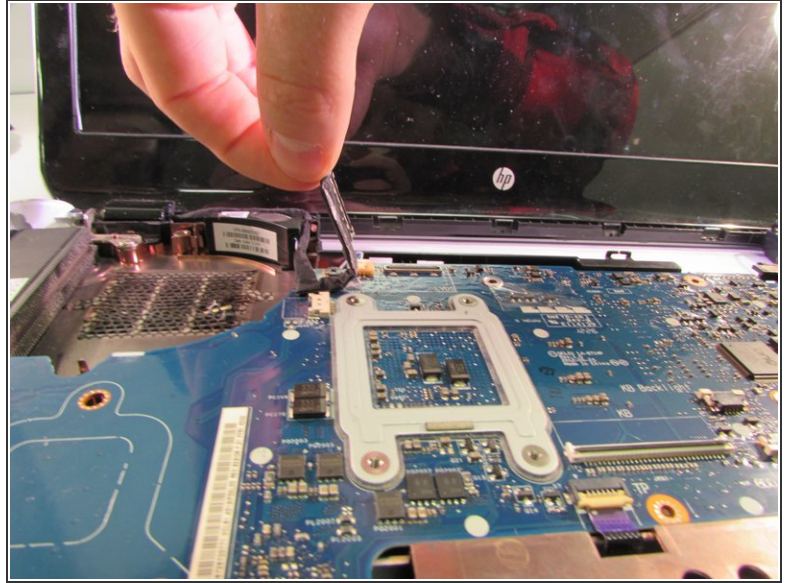
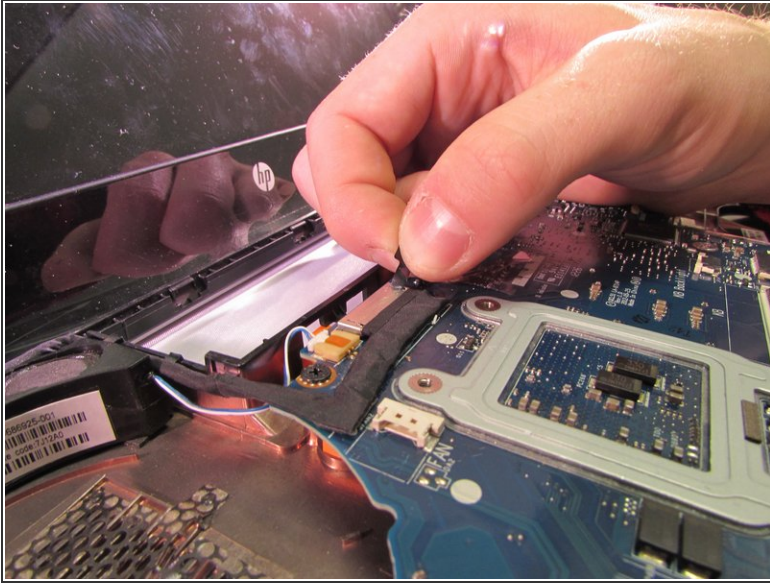
- Using a Phillips #1, remove the four 5.6mm silver screws.

Step 14



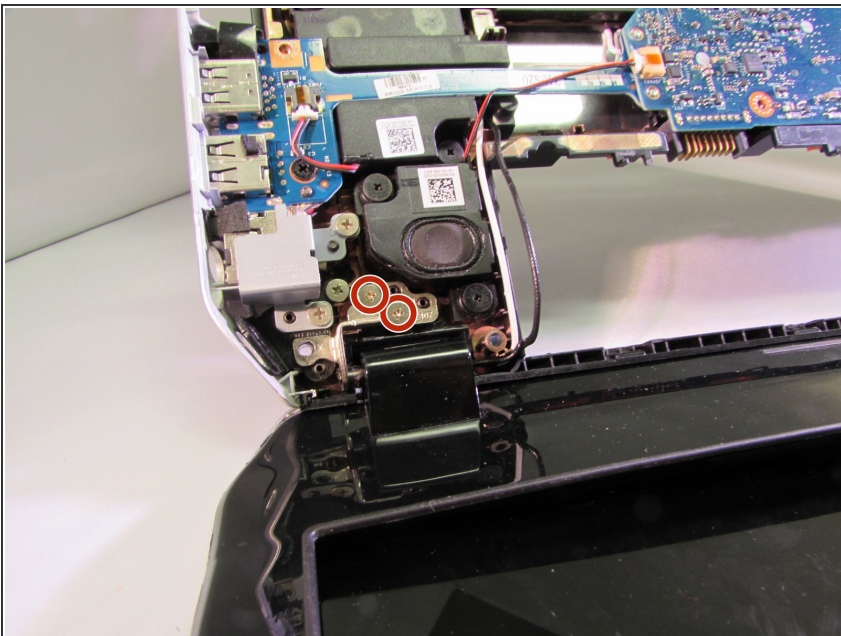
- Use the plastic opening tool to pry the face plate off the rest of the frame.
- Once you pry all of the snaps up lift the face plate off.

Step 15 — Hinges



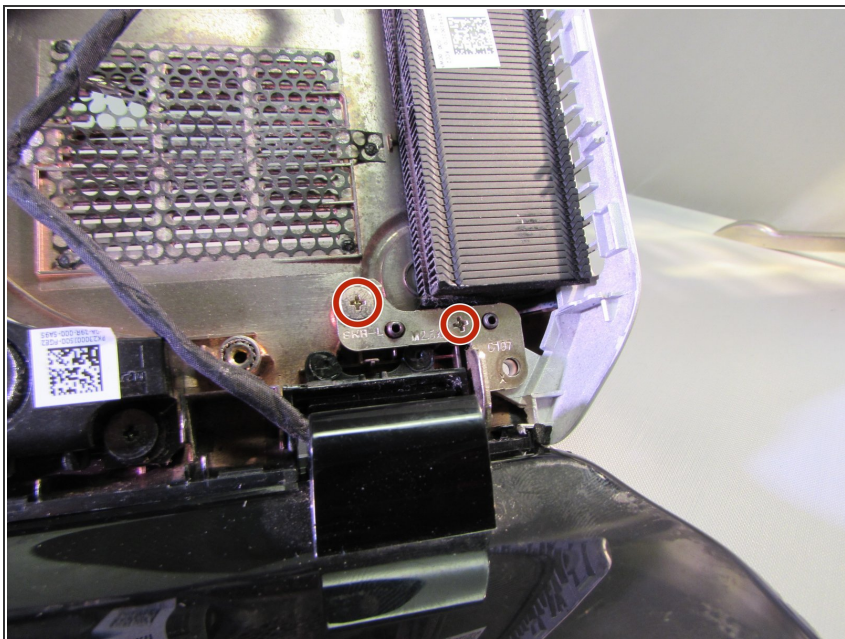
- Pull up on the black tab to unplug the cable that goes into the screen
- ⓘ The cable will be stuck onto the motherboard and will need to be pulled off. The adhesive is very weak and the cable will stick back down when you are finished.

Step 16



- Using a Phillips #1, remove the two 5.6mm silver screws from the base of the first hinge.

Step 17



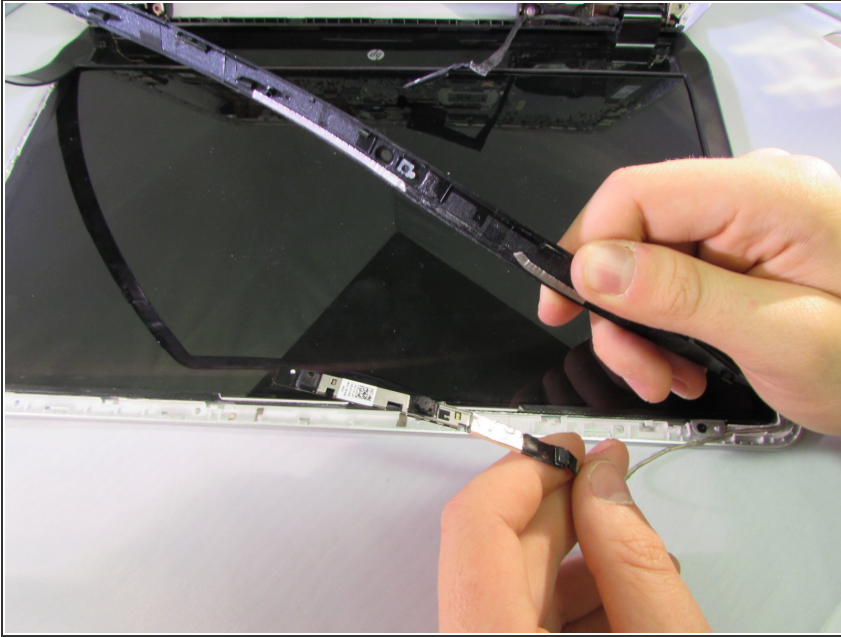
- Also using a Phillips #1, remove the two 5.6mm silver screws from the base of the second hinge.

Step 18



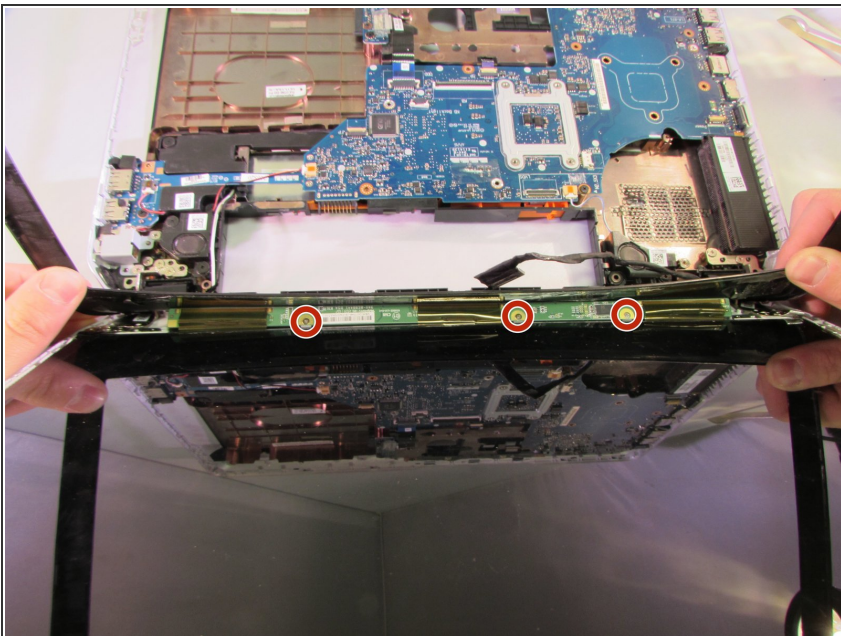
- Using a plastic opening tool, carefully start prying the frame of the screen up

Step 19



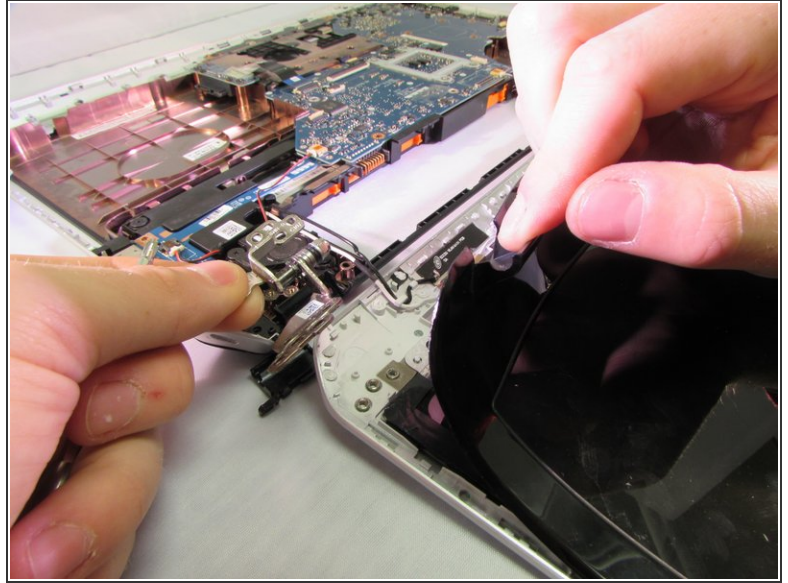
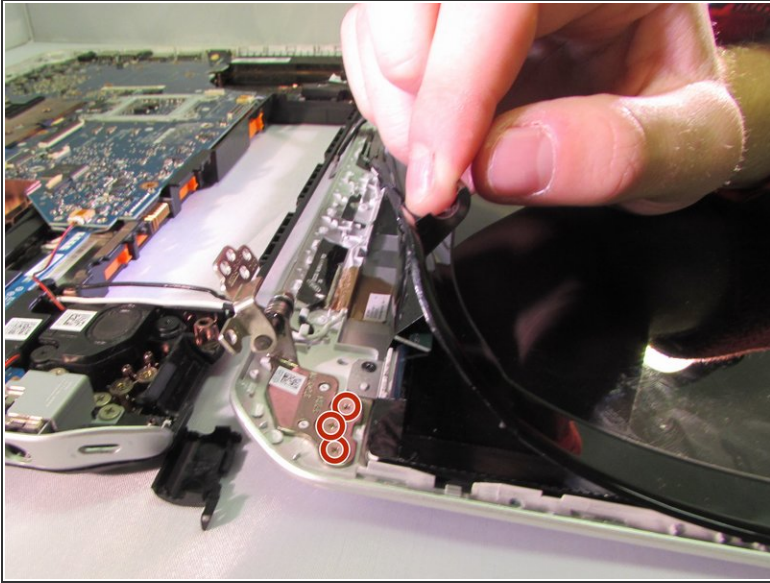
⚠ When prying the screen frame off be careful around the top edge as your webcam will be there. It is a safe idea to move it out of the way like am I doing now.

Step 20



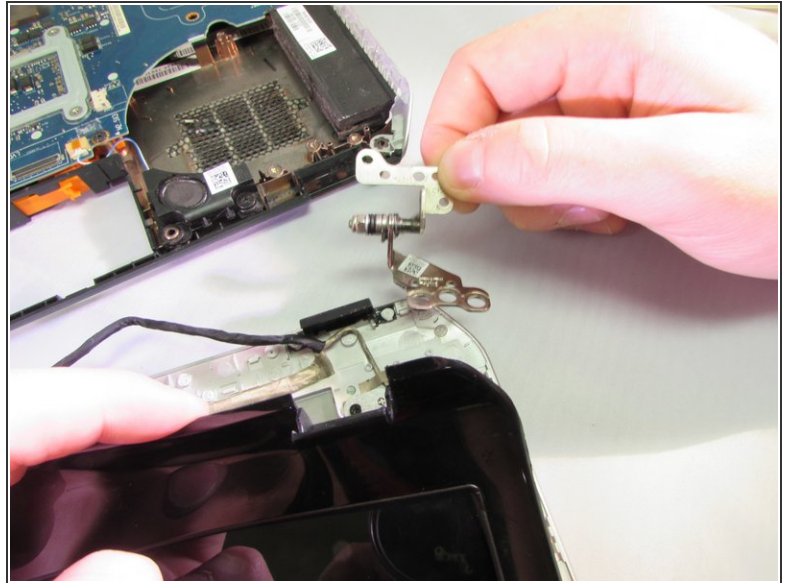
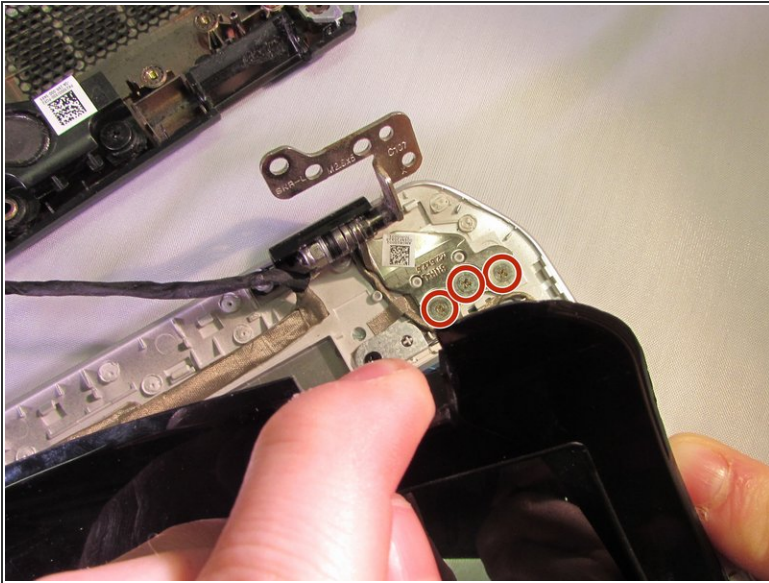
- Remove the three 1.9mm silver screws from the base of the screen frame using the Phillips 00 screwdriver.
- ⓘ If you are doing this guide as a prerequisite to replace the screen, stop here and skip ahead to step 23

Step 21



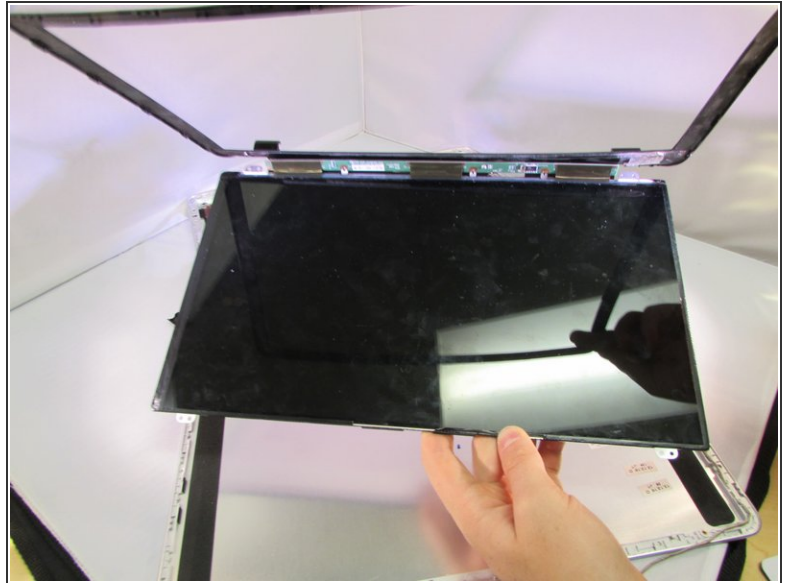
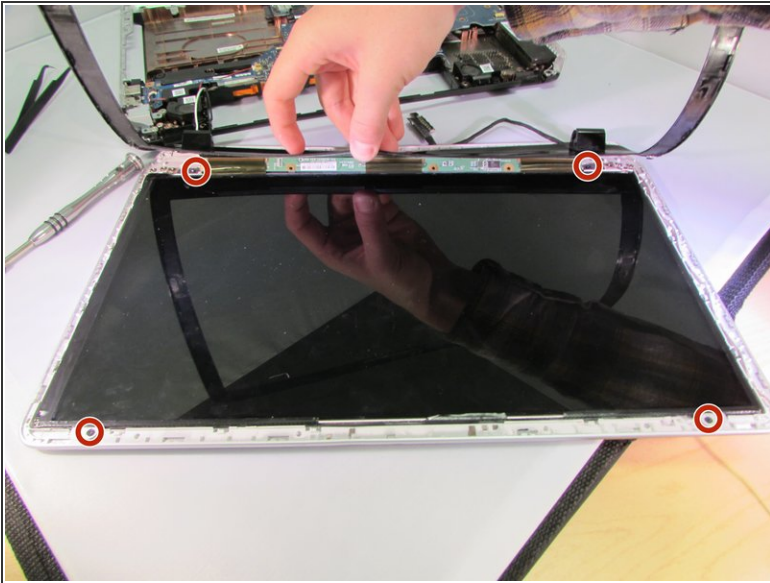
- Carefully pry the edge of the frame up to expose the other half of the first hinge.
- Using a Phillips #1, remove the three 2.8mm silver screws.
- Pull the hinge out.

Step 22



- Care full pry up the other corner of the frame
- Using a Phillips #1, remove the three 2.8mm silver screws
- Pull the hinge out.

Step 23 — Screen



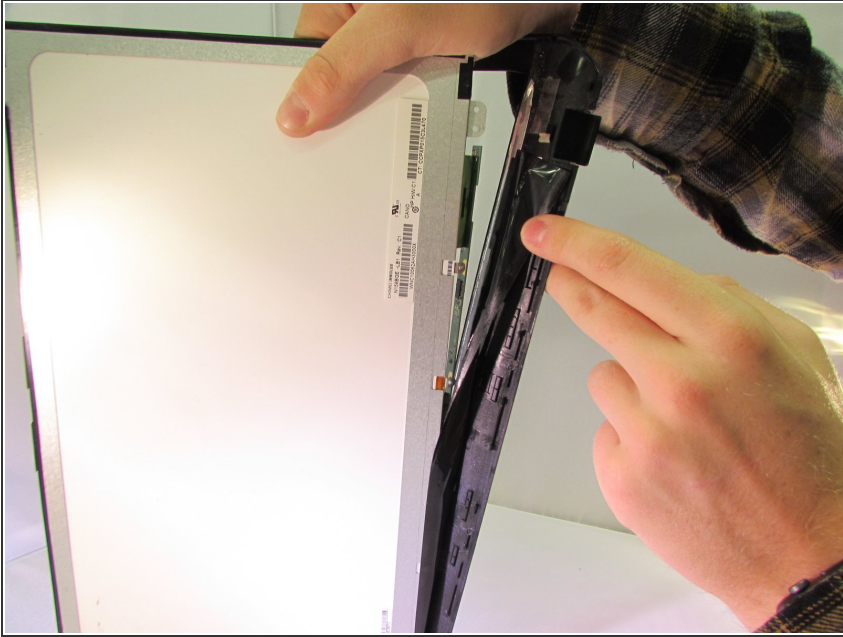
- Using a Phillips #00, remove the four 2.3 mm black screws.
- Lift the screen and frame out of the computer body.

Step 24



- Flip the screen over
- There is a black cable that is connected to the screen through the frame.
- Pull back the tape that holds the cable in
- Pull the cable out to remove it.

Step 25



- Pull the black tape that is attached to the frame off of the screen

To reassemble your device, follow these instructions in reverse order.