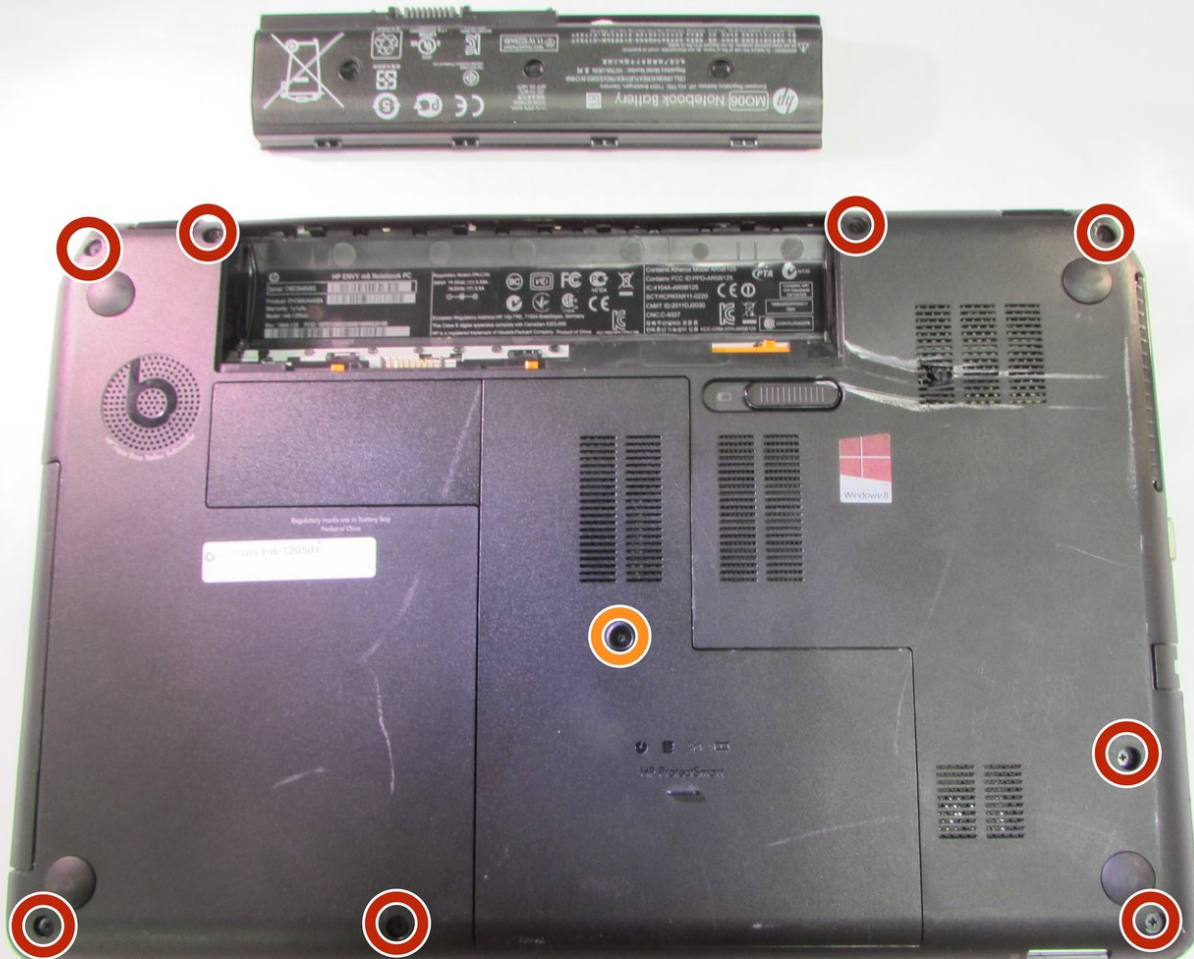




HP Envy M6-1205DX Touchpad Replacement

We will be showing how to replace the touchpad for the computer.

Written By: Alex Wasilewski



INTRODUCTION

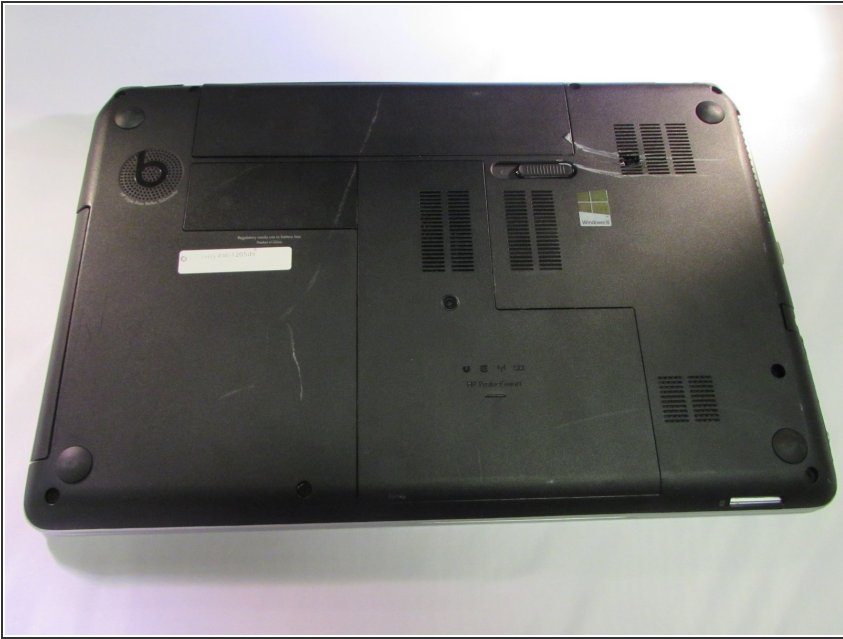
We will be showing you how to properly take apart your computer without causing damage.

Replacing the touch pad is not as simple as one may think. You will have to buy a full new face plate because the touch pad is built in.

TOOLS:

- [iFixit Opening Tools](#) (1)
 - [Phillips #1 Screwdriver](#) (1)
 - [Tweezers](#) (1)
-

Step 1 — Battery



- Lay the device face down to begin.

Step 2



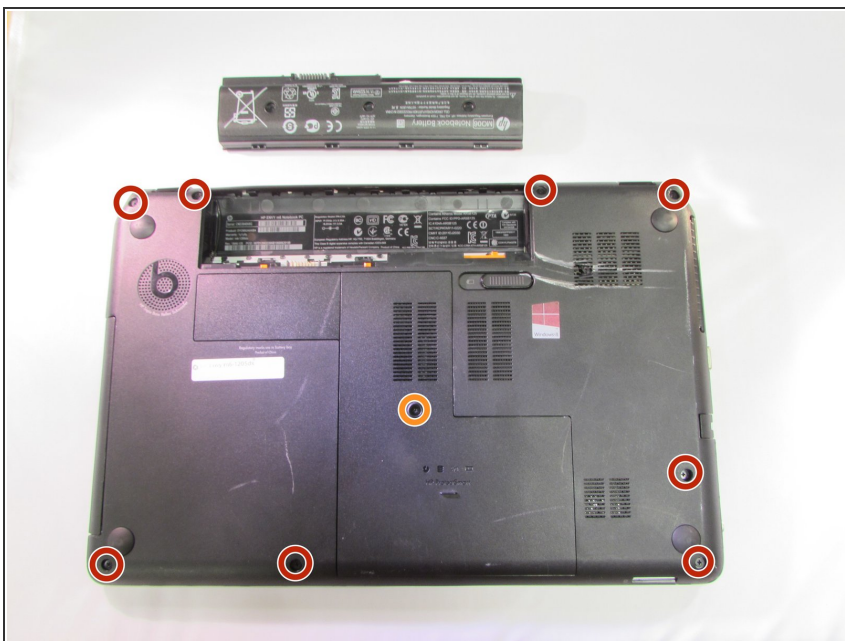
- Slide the release mechanism to the left to release the battery.

Step 3



- Remove the battery.

Step 4 — Touchpad



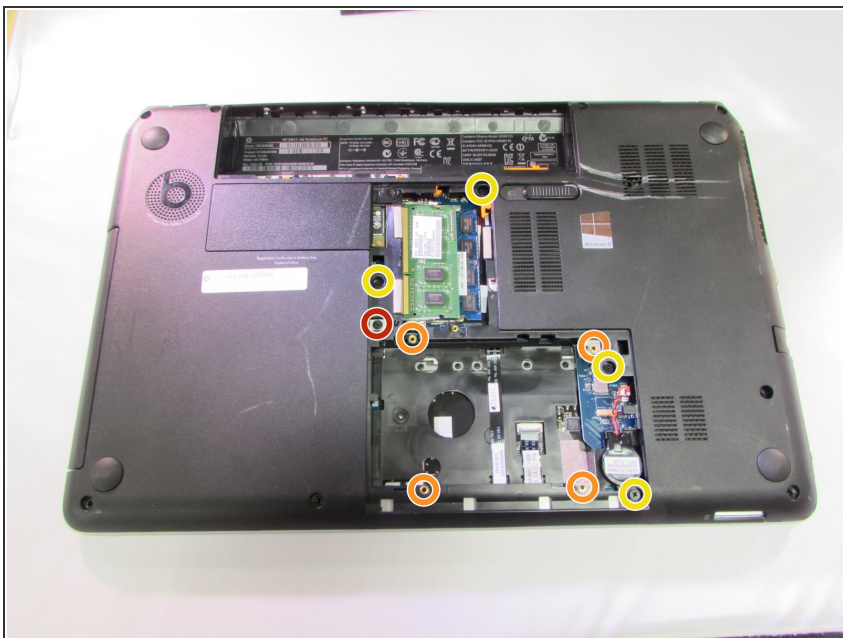
- Using a Phillips #1, remove the 8 10.6mm screws.
- Also using a Phillips #1, remove the 8.6mm screw.

Step 5



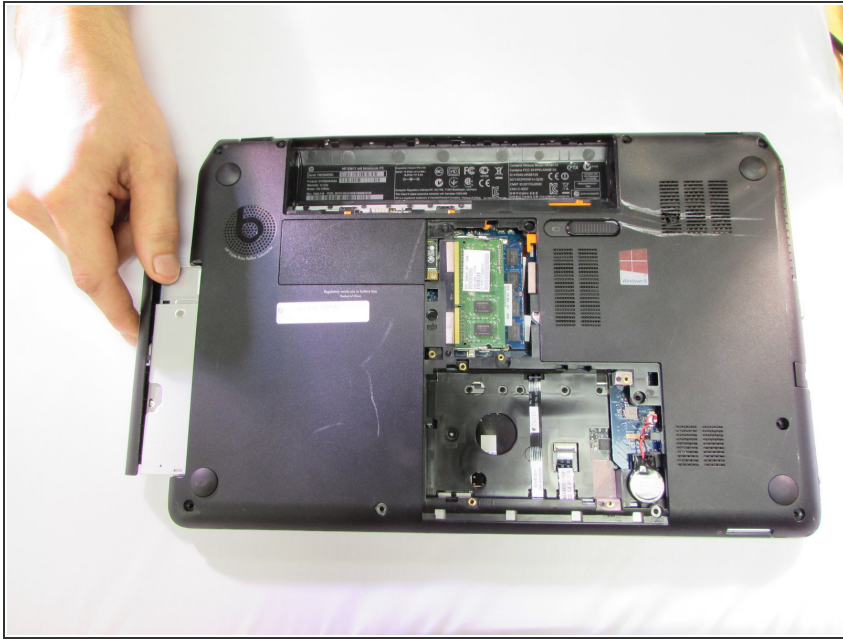
- Slide the center panel down to remove it.

Step 6



- Using a Phillips #1, remove the 3.5mm screw.
- ⓘ Our computer did not come with a hard drive so you should have one in the empty hole. We have marked where we believe the screws will be in orange.
- Using a Phillips #1, remove the four 10.6mm screws.

Step 7



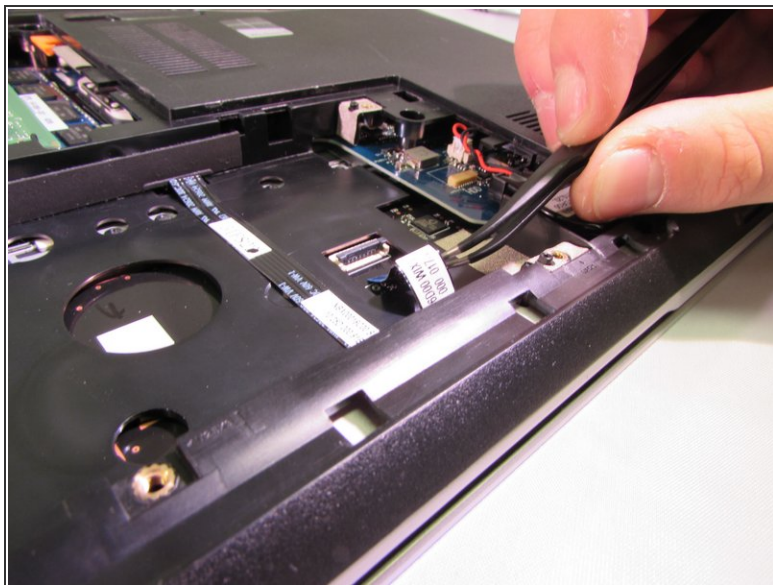
- Pull the disk drive out to remove it.

Step 8



- Using a Phillips #1, remove the two 2.4mm screws.

Step 9



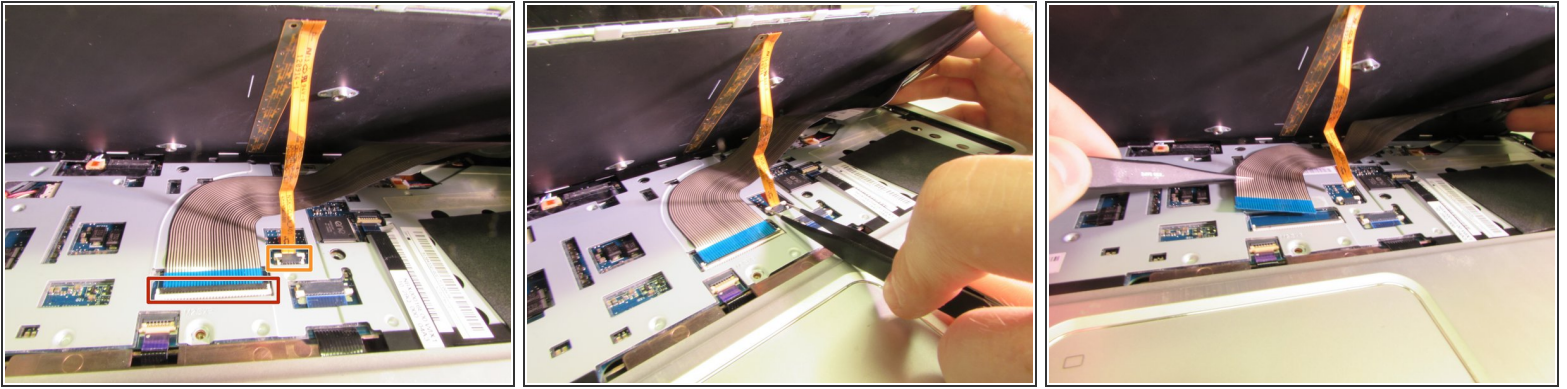
- Flip the black tab up on the clamp that holds the ribbon cable in place.
- Pull the cable back with your fingers or a pair of tweezers.

Step 10



- Flip the computer back over
- Use the plastic opening tool to pry the keyboard up .

Step 11



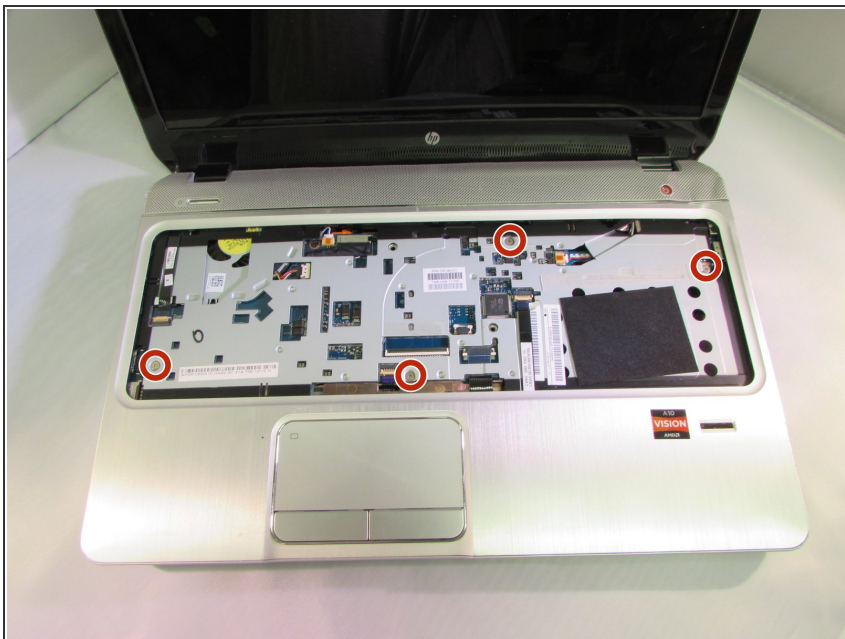
- Carefully lift the keyboard up.
- Flip up the black tab holding the large ribbon cable down.
- Push both sides of the small white tab forward to release the small ribbon cable.
- Pull both the cables out to remove them.
- Remove the keyboard.

Step 12



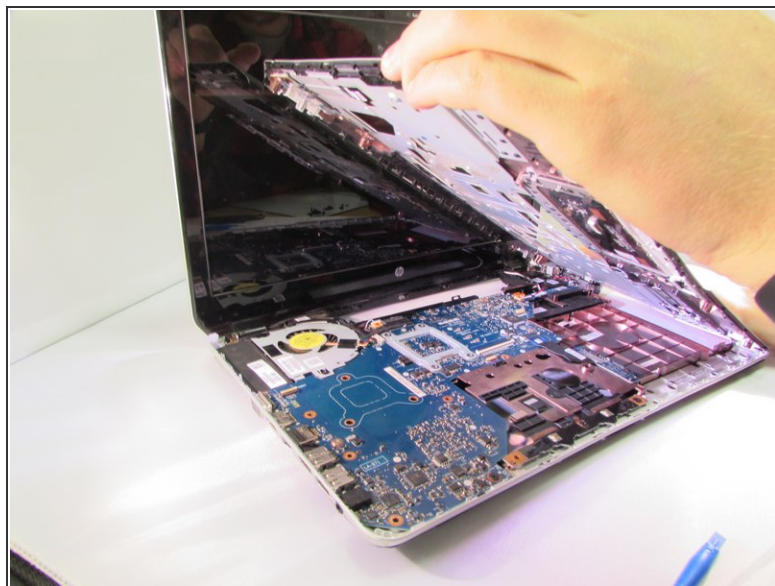
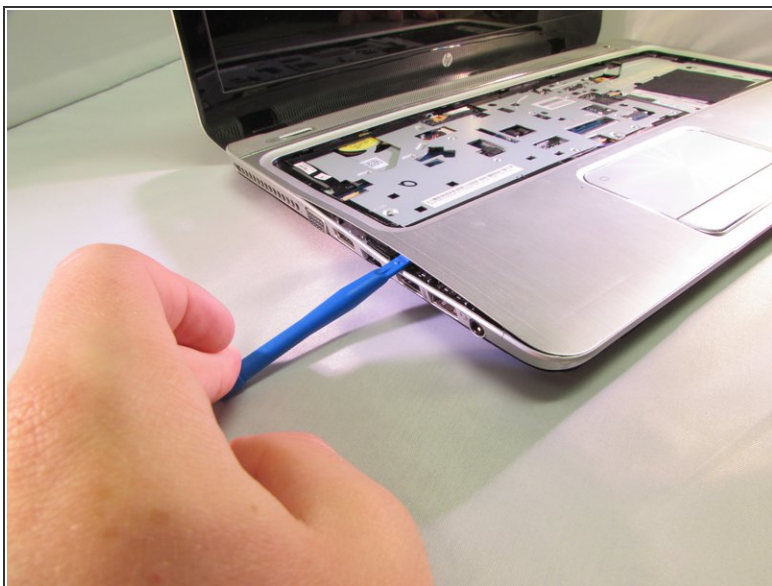
- Flip the small white tab up to release the ribbon cable.
- Pull to remove.
- Repeat the same steps for the other cable.

Step 13



- Using a Phillips #1, remove the four 5.6mm silver screws.

Step 14



- Use the plastic opening tool to pry the face plate off the rest of the frame.
- Once you pry all of the snaps up lift the face plate off.

To reassemble your device, follow these instructions in reverse order.