



HP Envy TouchSmart 15 CMOS Battery Replacement

How to remove and replace the CMOS battery on this laptop.

Written By: Robert Patterson



INTRODUCTION

Upon boot up, the computer may read a “CMOS checksum error,” or date and time keep getting reset. If this is the error you are receiving you should replace your CMOS Battery.

TOOLS:

- [Metal Spudger](#) (1)
 - [iFixit Opening Tools](#) (1)
 - [Phillips #0 Screwdriver](#) (1)
-

Step 1 — Battery



- Press the battery release tab and the battery will pop up.

Step 2



- Remove the battery from the laptop, it will come out easily.

Step 3 — Accessory Plate



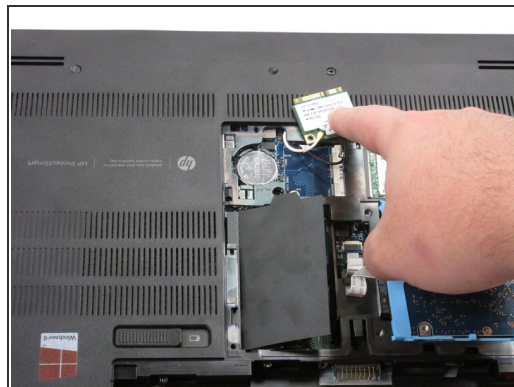
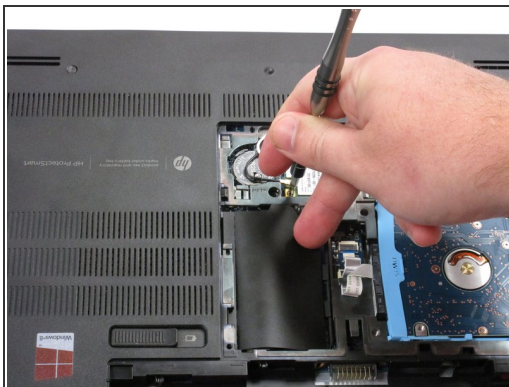
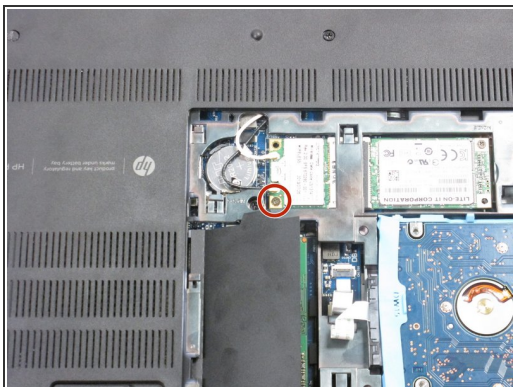
- Remove the single screw holding the accessory plate. This is a PH0 2.0x2.5 screw.

Step 4



- Pry the accessory plate up from the back of the laptop by applying force upwards where the screw was removed.

Step 5 — CMOS Battery



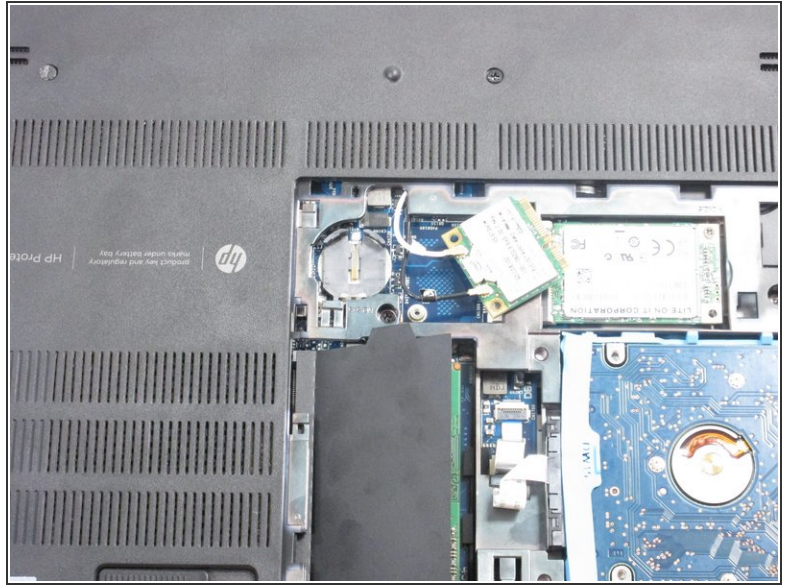
- Remove the screw from the wireless adapter with a PH0 screwdriver then move the adapter out of the way to access the CMOS battery.

Step 6



- Use a plastic or metal spudger to release the CMOS battery from the clips.

Step 7



- Remove the battery from the device.

To reassemble your device, follow these instructions in reverse order.