



HP Envy TouchSmart m7 k010dx Screen Replacement

Use this guide to replace the screen in your HP Envy TouchSmart m7 k010dx.

Written By: Owen Ou



INTRODUCTION

This guide will walk you through the process of replacing a screen in the HP Envy TouchSmart m7 k010dx.

- A screen would need to be replaced if it is cracked, dead, or displays horizontal lines from end to end.
- A screen that is functioning properly will have a clear, crisp display.
- Before you begin, unplug the device and completely power it down.



TOOLS:

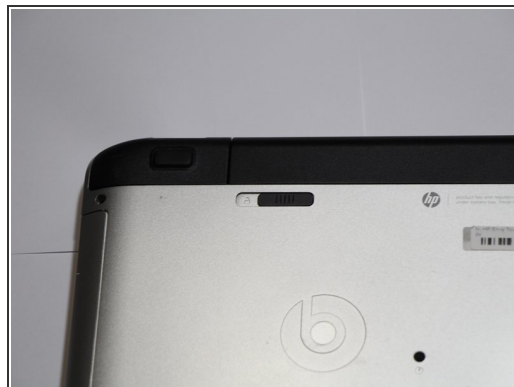
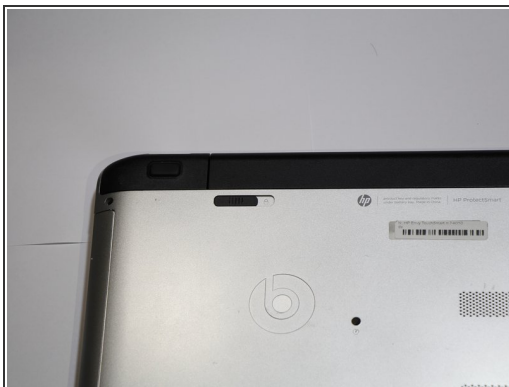
- [Plastic Cards](#) (1)
- [iFixit Opening Tools](#) (1)
- [Phillips #0 Screwdriver](#) (1)
- [JIS #000 Screwdriver](#) (1)
- [Spudger](#) (1)
- [Tweezers](#) (1)



PARTS:

- [New Display Panel](#) (1)

Step 1 — Battery



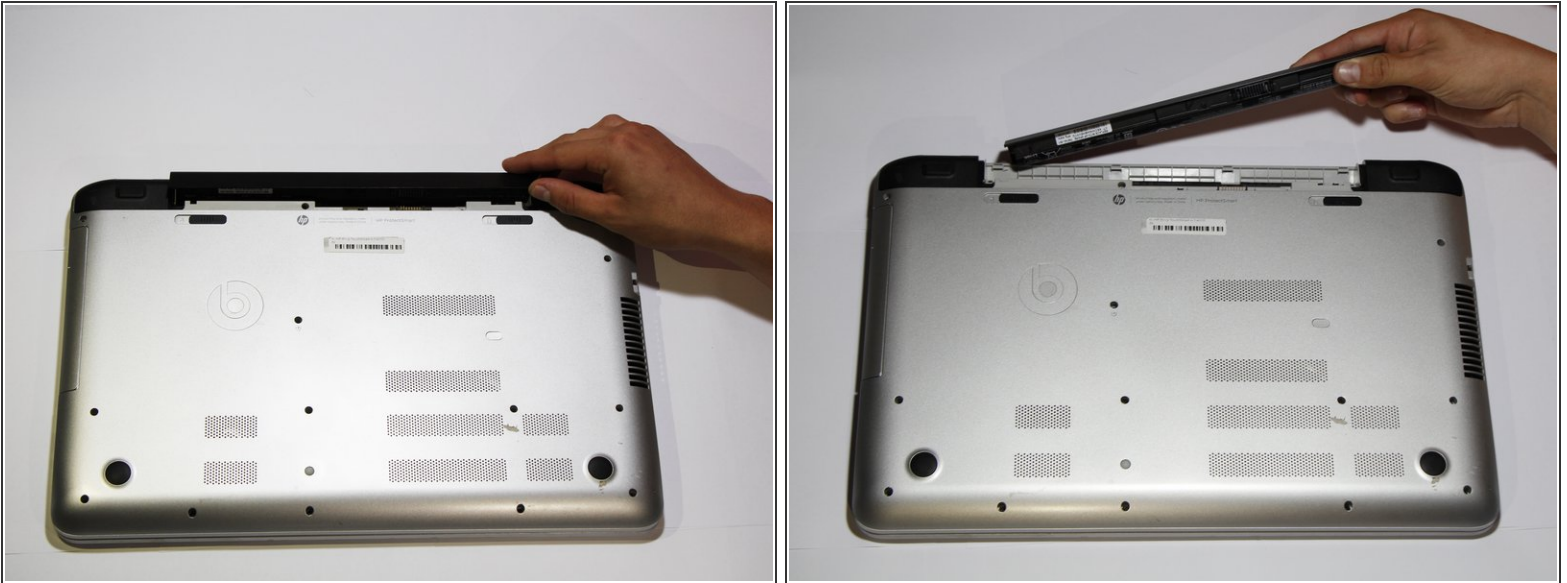
- Turn your computer over so that the bottom is facing up.
- Slide the left black switch towards center.
- You should see an unlock image exposed to the left of switch if done correctly.

Step 2




- Slide the right black switch towards center to release the battery.

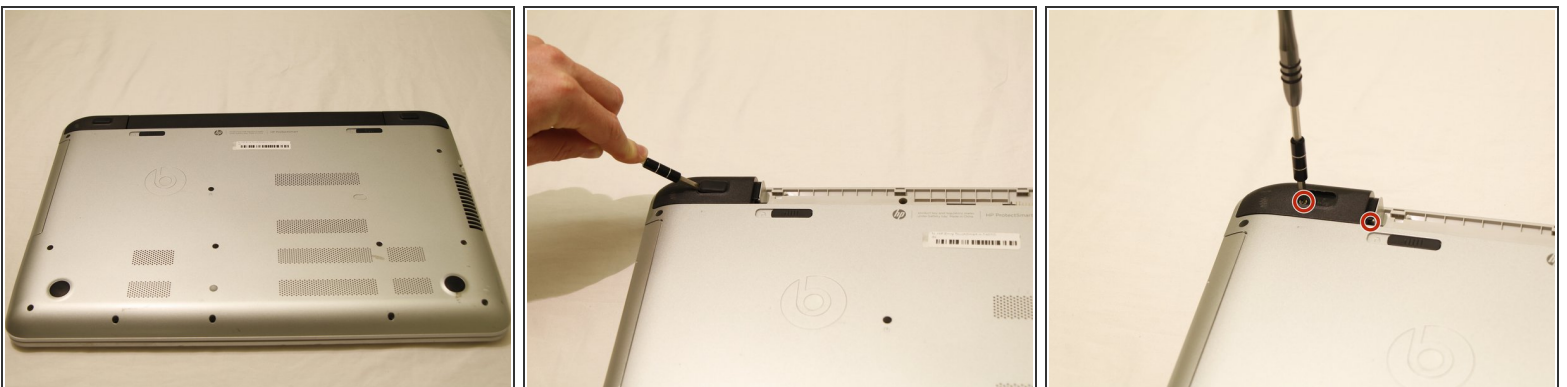
Step 3



- Pivot the loose edge of the battery closes to you by pushing it toward the back of the computer.
- The battery should slide out freely.

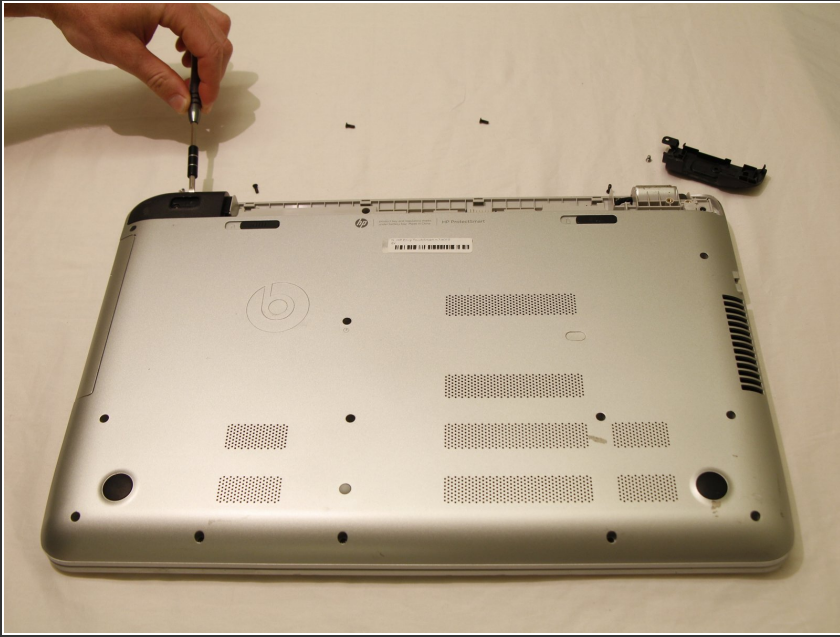
 If battery is not pivoted before sliding out, you risk breaking interlocking tabs on the battery or computer.

Step 4 — Keyboard



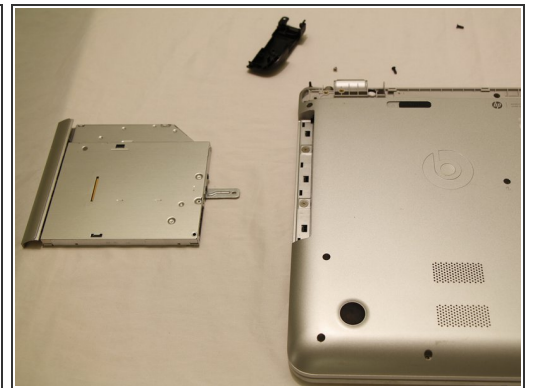
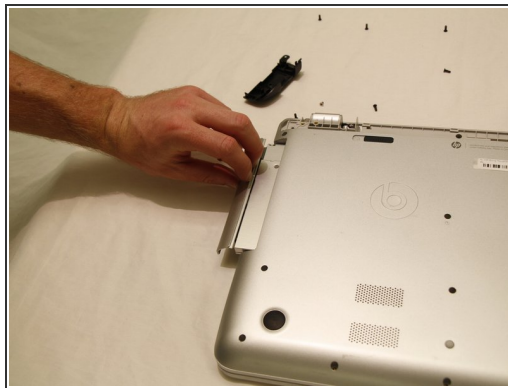
- With the computer turned over use a nylon spudger to pry the rectangular pads off to reveal two hidden screws.
- Using a Phillips #0 screwdriver, remove the screw that is beneath the black rubber pad, as well as the other holding down the black corner plastic pieces on both the left and right sides.

Step 5



- Use a plastic opening tool to pop the corners off by wedging between casing. Do this for both legs as depicted in the picture.

Step 6



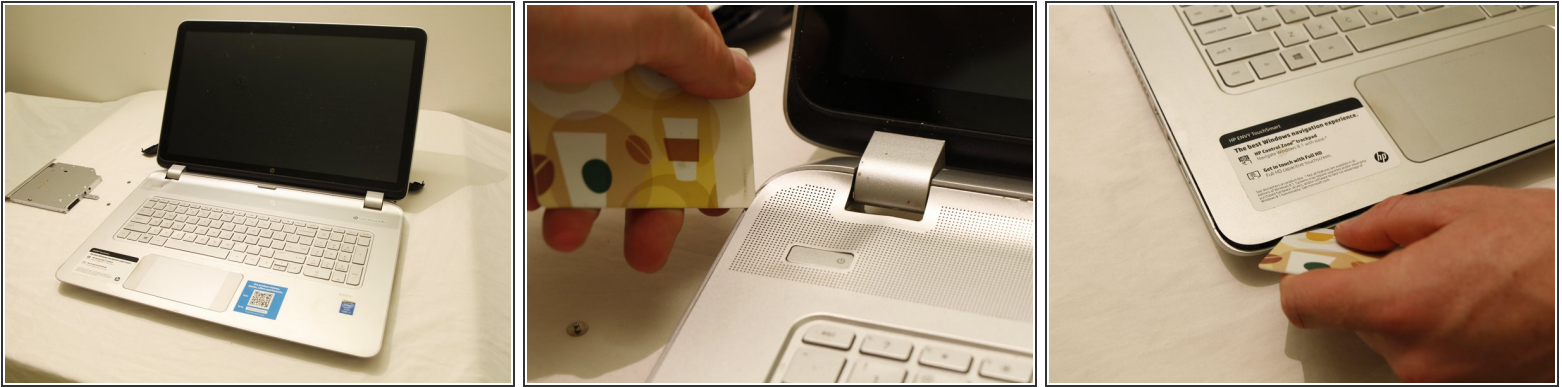
- Using the Phillips #0 screwdriver, remove the screw in the center of the computer, and to the right of the Beats logo.
- Use your fingernails to pull out the optical drive. It will have some resistance to start, but will come out easily afterwards.

Step 7



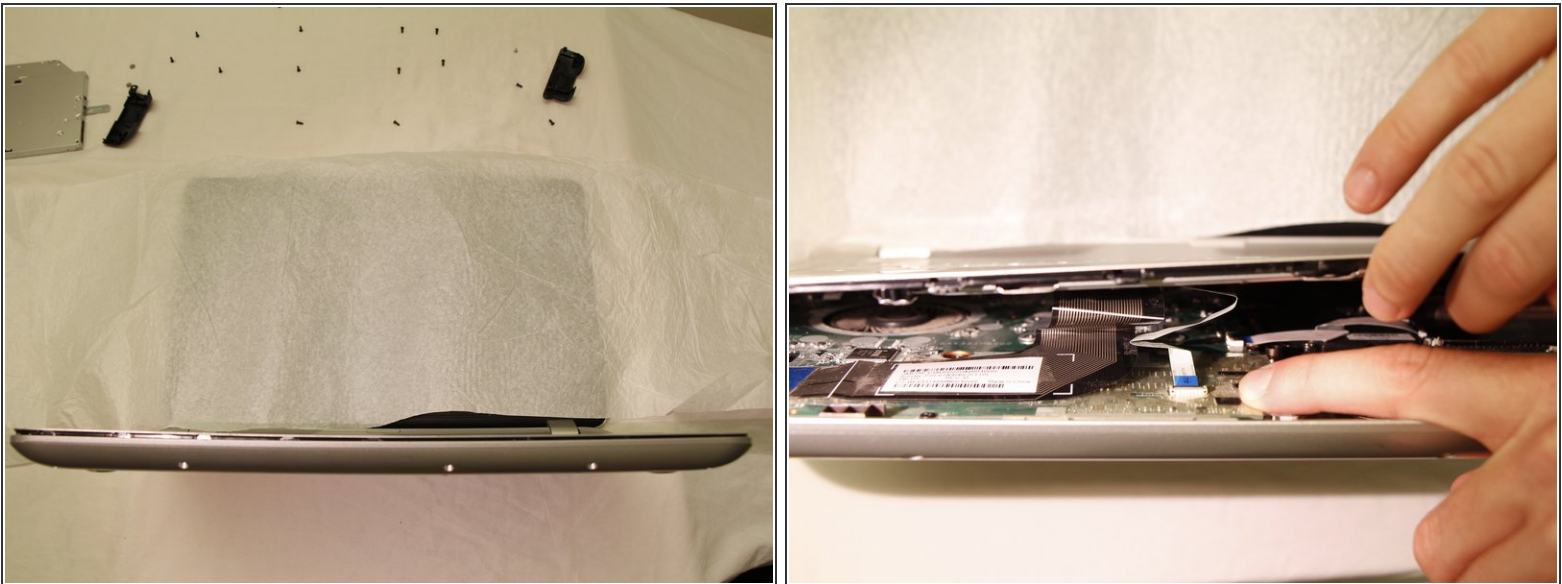
- Using a JIS #00 screwdriver, remove the two screws that were revealed when the optical drive was removed.
- Use a Phillips #0 screwdriver to remove all screws that are visible on the bottom.
- There is an oval tab near the center of the laptop, use the flat end of a nylon spudger to wedge it free to reveal another Phillips #0 screw.

Step 8



- Open up the laptop and set it down normally.
- Use a credit card or spudger to wedge between the top and bottom keyboard casing.
- Slide the card all the way around the laptop, making sure to pop free all tabs.

Step 9



- Place the computer on the backside of the screen, so that the bottom of it is pointing up into the air.
 - ⓘ You may want to place a rag over the screen so that if the front panel touches it while being removed, no damage is caused.
- Carefully begin to separate the top case from the bottom case, as if you are opening it like a book from the edge nearest the touch pad.

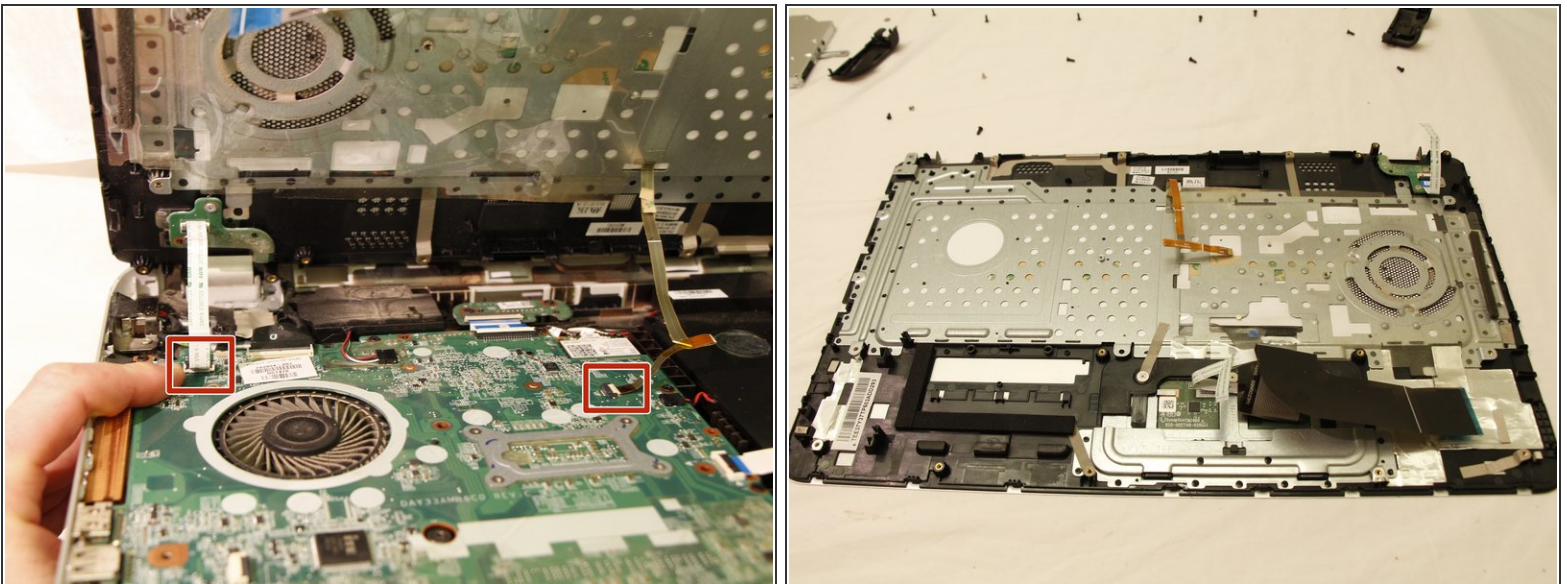
This document was generated on 2019-10-28 01:55:11 PM (MST).

Step 10



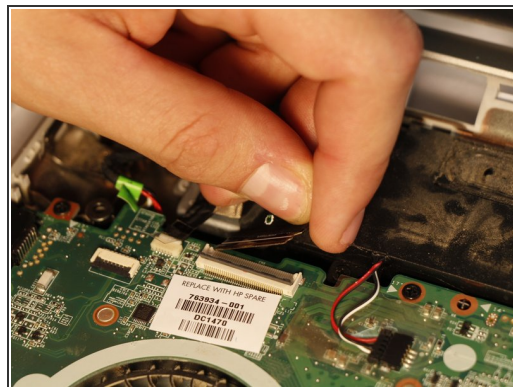
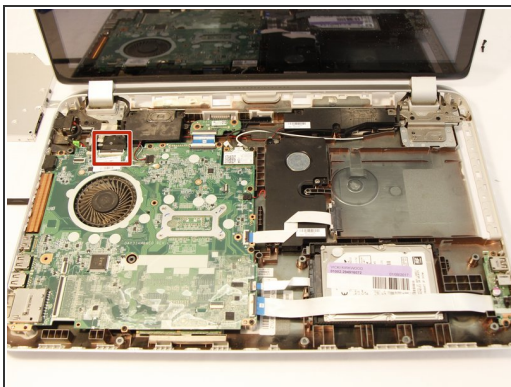
- The two panels are connected with 4 flexible electrical ribbon strips. The ribbon strips have a locking tab that will need to be disengaged prior to removal. Using fingers, begin by removing the two strips nearest to the opening.
- Picture 3 shows the tab unlocked

Step 11



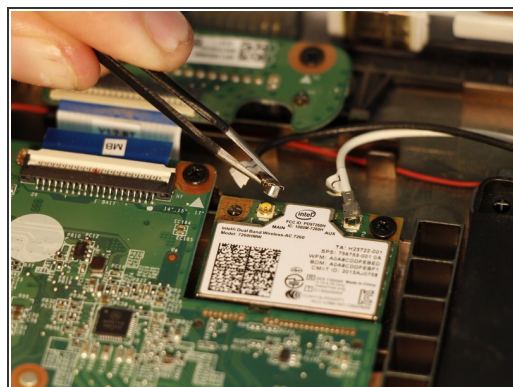
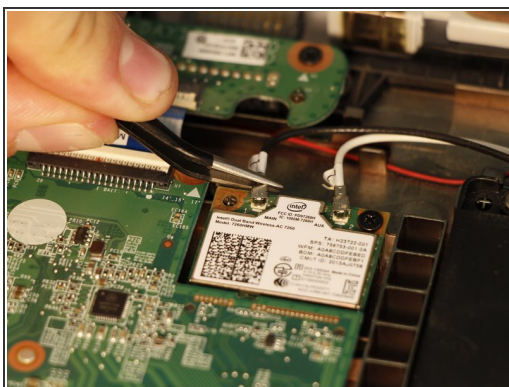
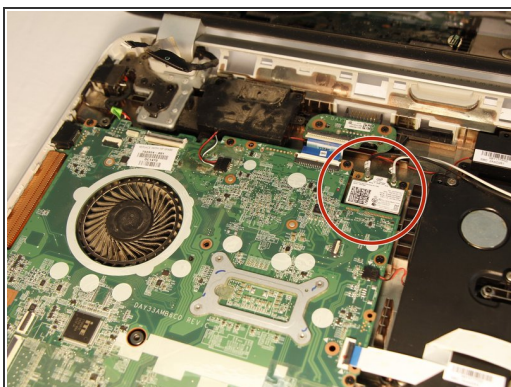
- With the two panels now separated, you can see the other two strips towards the back of the computer. With finger, carefully release each strip from the locking tab.
- Once all are unplugged, carefully remove the top case.

Step 12 — Screen



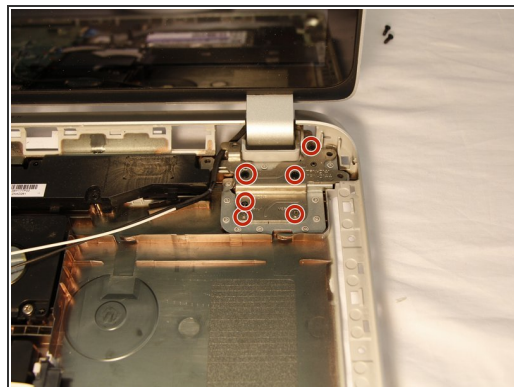
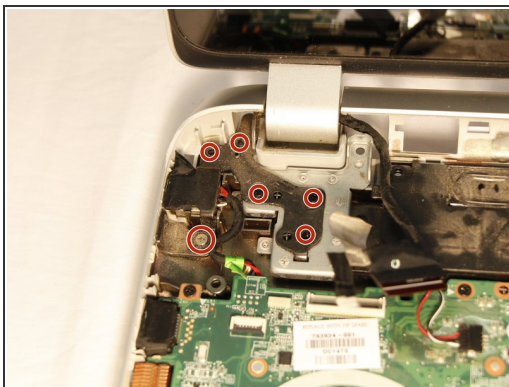
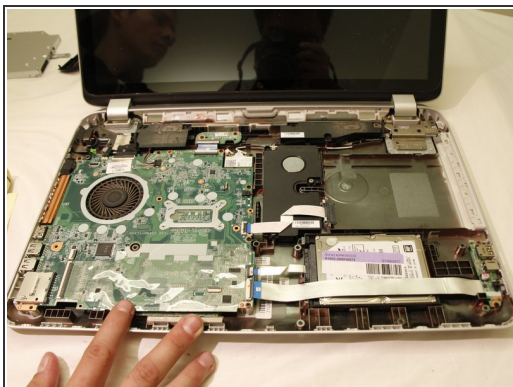
- With tweezers in hand, begin by disengaging the tab on the upper left corner of the motherboard. Using your fingers, disconnect the plug that is to the left of the tab.

Step 13



- Using tweezers, gently remove the two cables connected to the WLAN module.

Step 14



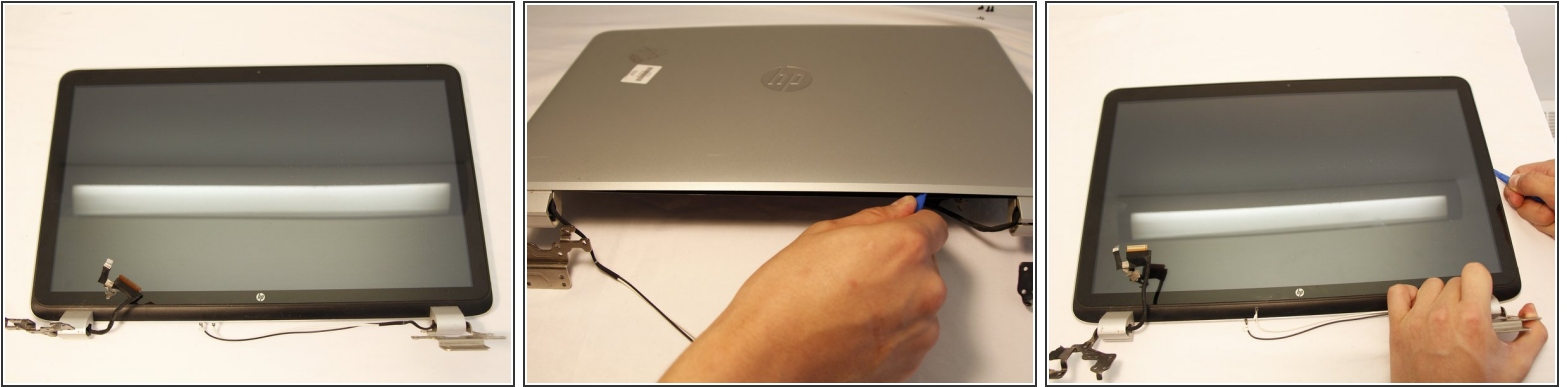
- Using a JIS #00 screwdriver, remove the screws holding the hinges in place.
- ⓘ On the left hinge, there is a screw that does not appear to belong to hinge but is (circled in picture).

Step 15



- Remove the screen by pulling it forward from the casing. This allows the hinges to clear the casing.

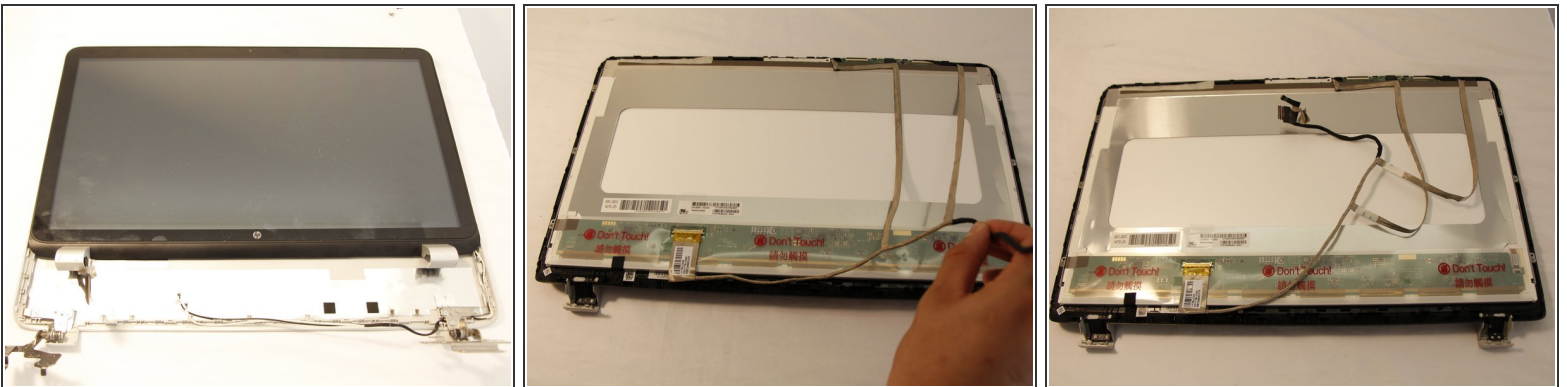
Step 16



- Use a plastic opening tool along the gap between the screen and the back panel to separate the two pieces.

⚠ When sliding with plastic opening tool, be careful around the webcam location to prevent damage.

Step 17



- Carefully separate the display unit from its back panel.
- ⚠ There is glue between the two pieces, make sure you move slowly.
- Flip the display unit over. Slowly remove the output cable from clips holding it in place.
 - To remove the two strip running to top of display simply lift to loosen the tack glue holding them in place.

Step 18



- Use the spudger or your finger to remove the tape on the output connection.
 - Slowly and carefully pull the cable out from the connection.
- ⚠ Permanent damage can be caused on your computer if you pull the cable too hard.

Step 19



- To remove the screen from its bezel there are a total of 4 Phillips head screws. 2 on left and 2 on right of the display unit.
- Use a Phillips #0 screwdriver to remove the screws.
- The display unit can now be taken out freely.

To reassemble your device, follow these instructions in reverse order.