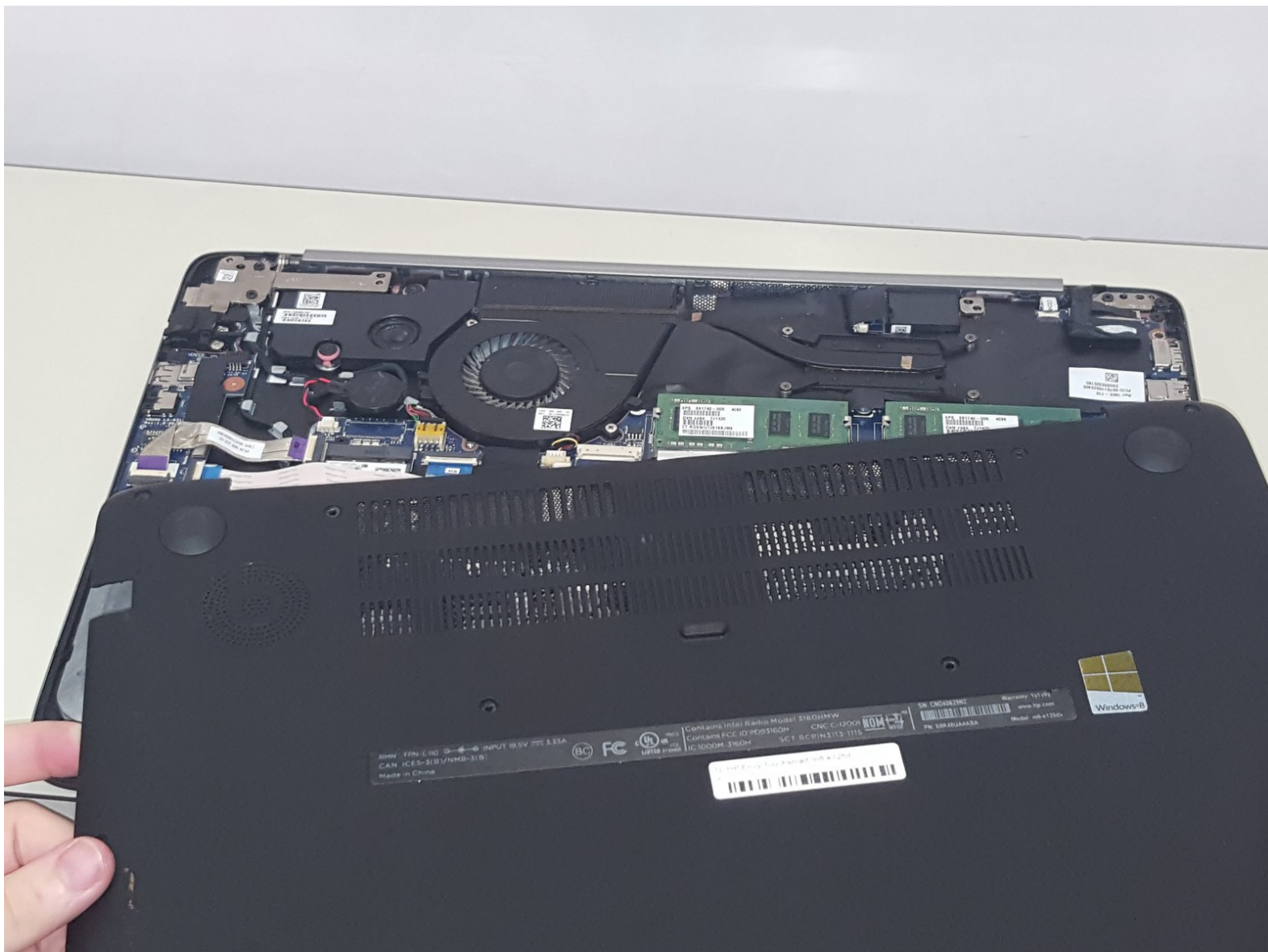




HP Envy Touchsmart m6-k125dx Back Panel Replacement

Remove the back panel of the HP Envy Touchsmart m6-k125dx to reach its inside components.

Written By: Shawn



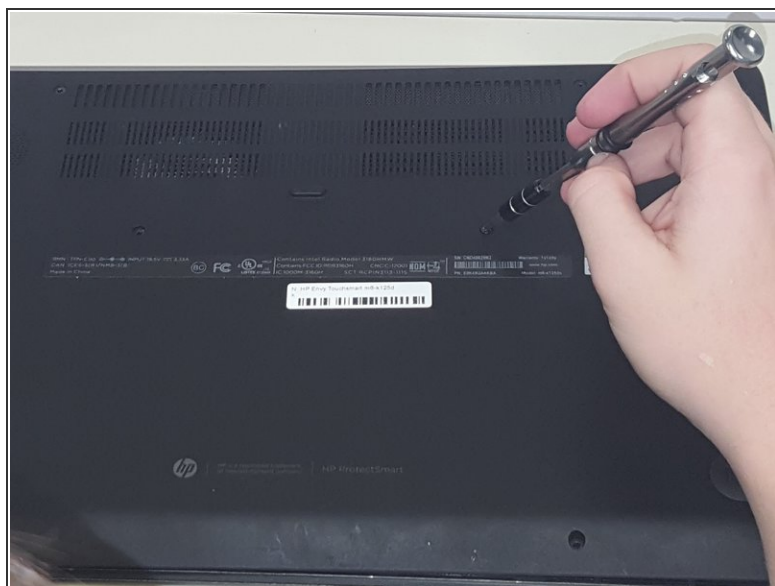
INTRODUCTION

Removing the back panel is the necessary prerequisite for replacing many of the components of the HP Envy Touchsmart m6-k125dx. It is the part that covers the inside components and is held together by several screws underneath the laptop.

TOOLS:

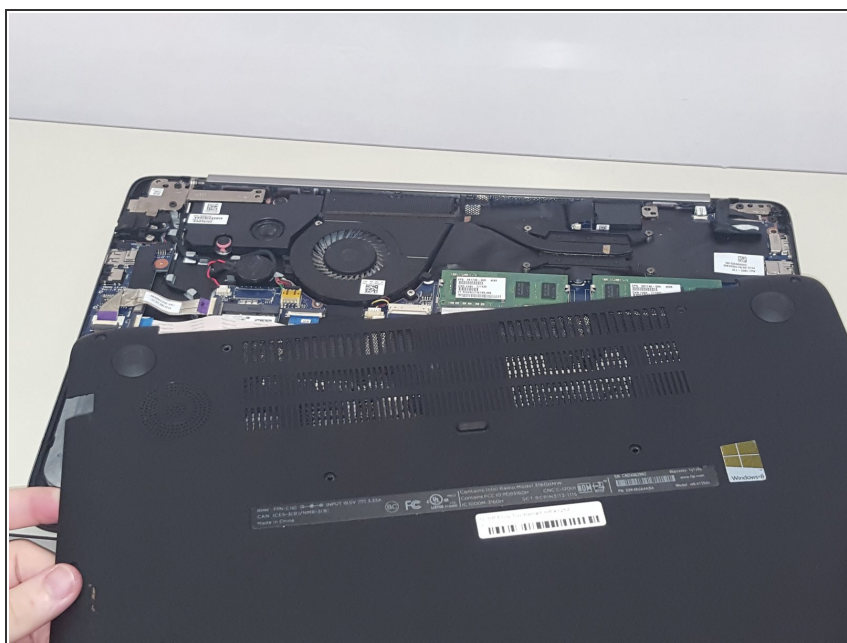
- [JIS #0 Screwdriver](#) (1)
-

Step 1 — Back Panel



- Turn the laptop over so that the bottom is facing up
- Using the J0 screwdriver, unscrew all 12 M2.5x5.5 screws from the back panel.

Step 2



- Carefully remove the back panel to reveal the inner components.

To reassemble your device, follow these instructions in reverse order.