



HP Envy Ultrabook 4-1015dx Battery Replacement

Removing the battery in your HP Envy Ultrabook 4-1015dx in order to insert a replacement, replace other parts, or for troubleshooting purposes.

Written By: Salvador Balkus



INTRODUCTION

This repair requires a size 0 Phillips head screwdriver and a plastic opening tool. If you think that you are having an issue with your battery, but are not sure, follow this guide to access the battery for troubleshooting purposes. In addition, if you have determined that there is a problem with the battery and you have obtained a replacement, you can use this guide to replace the battery as well.

Removing the battery may be a necessary prerequisite for performing replacement of a different part of the device as well. In this case, this guide can also be useful for learning how to perform this first step.



TOOLS:

- [Phillips #0 Screwdriver](#) (1)
 - [iFixit Opening Tools](#) (1)
-

Step 1 — Battery



- Make sure that the device is turned off and that all external devices are removed.

Step 2



- Flip the device over so that the back plate is facing upwards.

Step 3



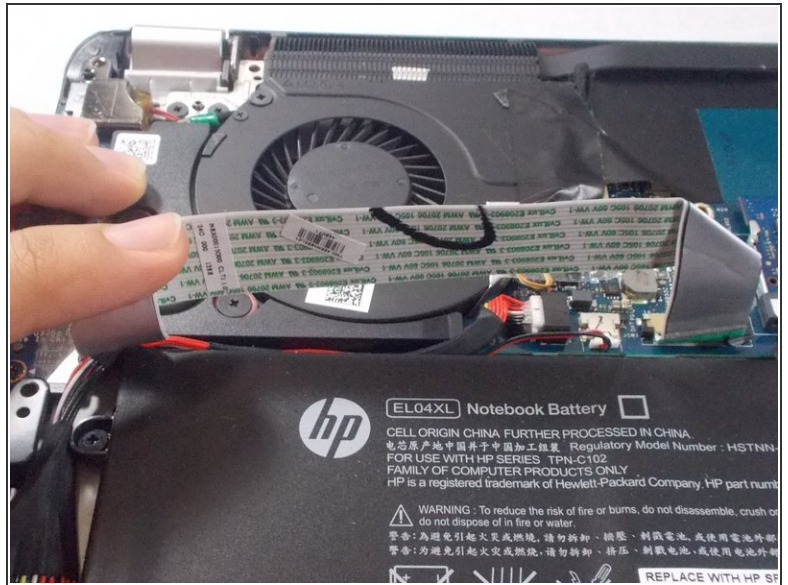
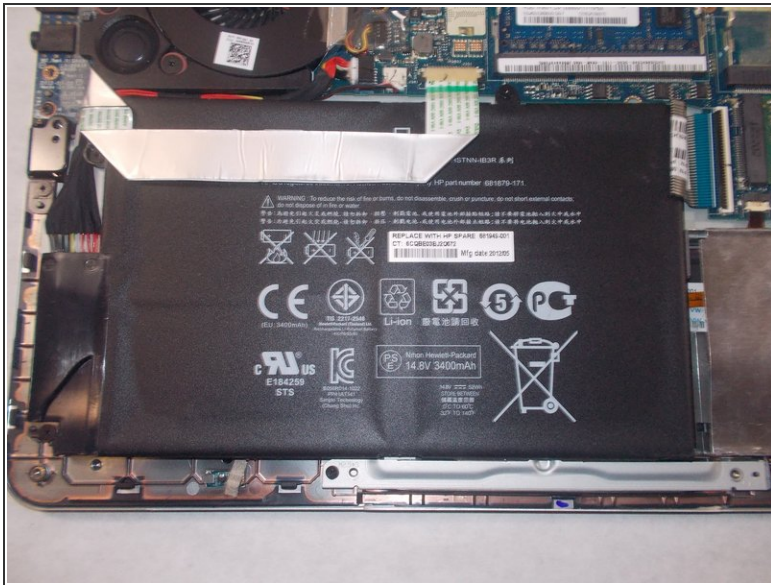
- Using a small (size 0) Phillips head screwdriver, remove the twelve 5.5 mm external Phillips head screws that connect the back plate to the device.
- ☑ Make sure to set the screws aside in a safe place so that you do not lose them, as they will be needed to reattach the backplate later.

Step 4



- Using the plastic opening tool, gently pry off the back plate from the device.

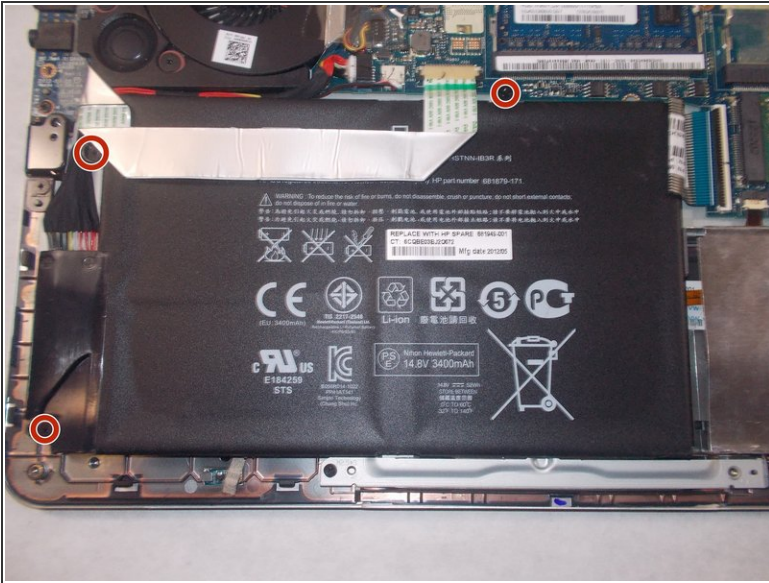
Step 5



i The large black box with the white warning images is the battery.

- Move the ribbon cable so that it is no longer on top of the battery.

Step 6



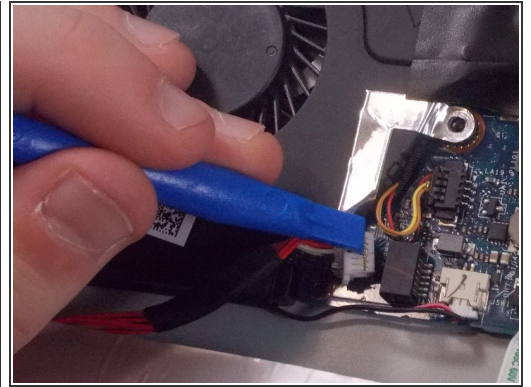
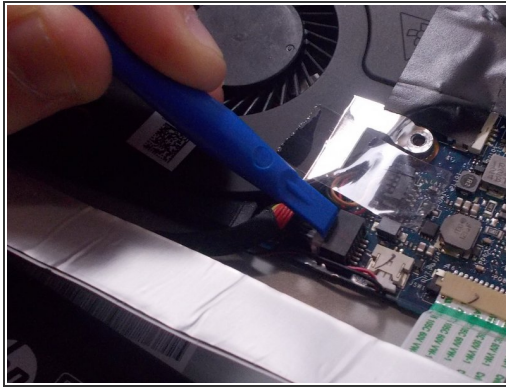
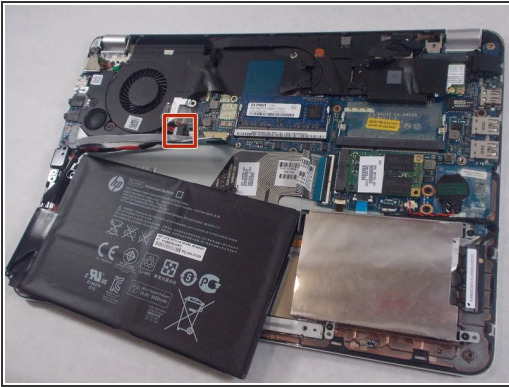
- Using a small (size 0) Phillips head screwdriver, remove the three 3.5 mm Phillips head internal screws that hold the battery in place.
- ⓘ Make sure not to lose these internal screws; they will later be used to reattach the battery.

Step 7



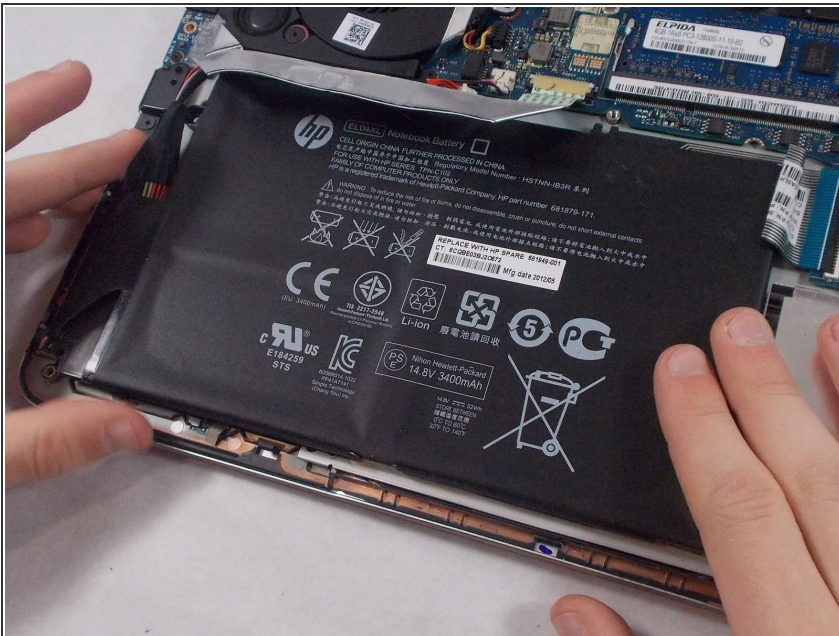
- Lift up the battery and remove it from the slot as shown.

Step 8



- Use the plastic opening tool to disconnect the battery cable.

Step 9



- Lift up the battery and remove it from the device.

To reassemble your device, follow these instructions in reverse order.