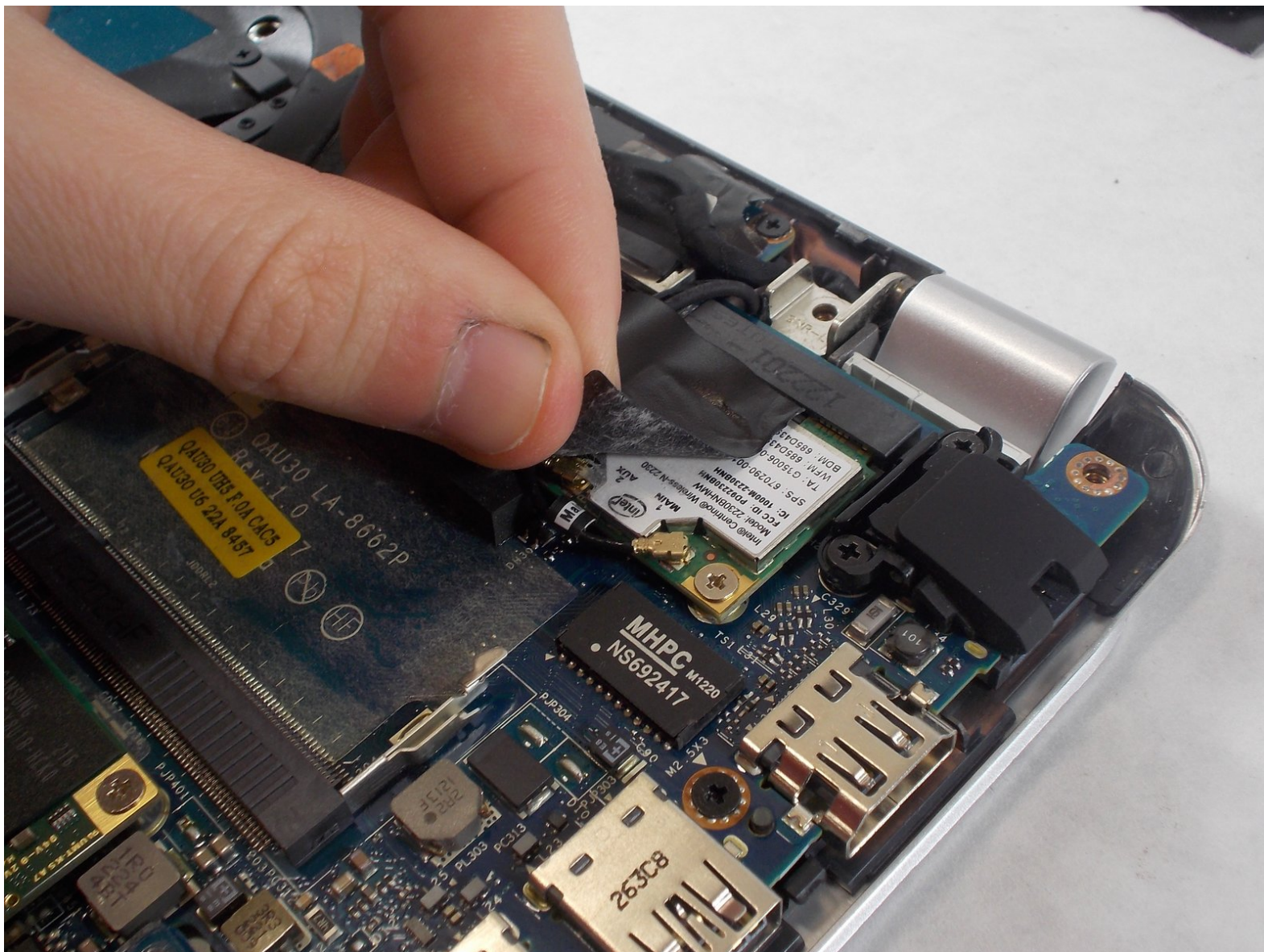




HP Envy Ultrabook 4-1015dx Bluetooth Module Replacement

How to replace a HP Envy Ultrabook 4-1015dx Bluetooth module.

Written By: Michael Horton



INTRODUCTION

The following step-by-step guide serves to show the correct way of replacing the Bluetooth Module on the HP Envy Ultrabook 4-1015dx Computer. A broken or faulty Bluetooth module can be identified through incorrect or lack of function of the PC's normal Bluetooth capabilities. The steps below should be followed carefully to preserve the quality of the computer and not cause additional damages.

The equipment required for this repair is a new Bluetooth module for the HP Envy Device. The tools required to complete the replacement of the Bluetooth module are available to buy below.



TOOLS:

- [Phillips #0 Screwdriver](#) (1)
 - [iFixit Opening Tools](#) (1)
 - [Tweezers](#) (1)
-

Step 1 — Battery



- Make sure that the device is turned off and that all external devices are removed.

Step 2



- Flip the device over so that the back plate is facing upwards.

Step 3



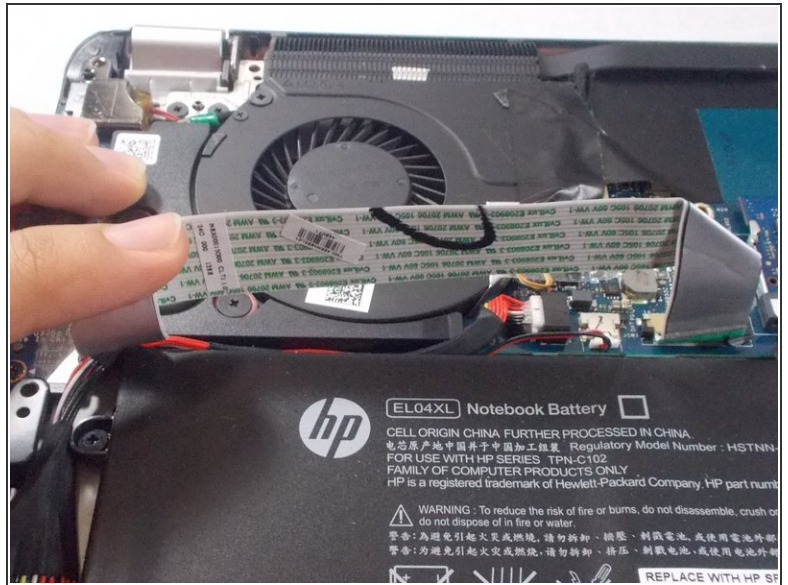
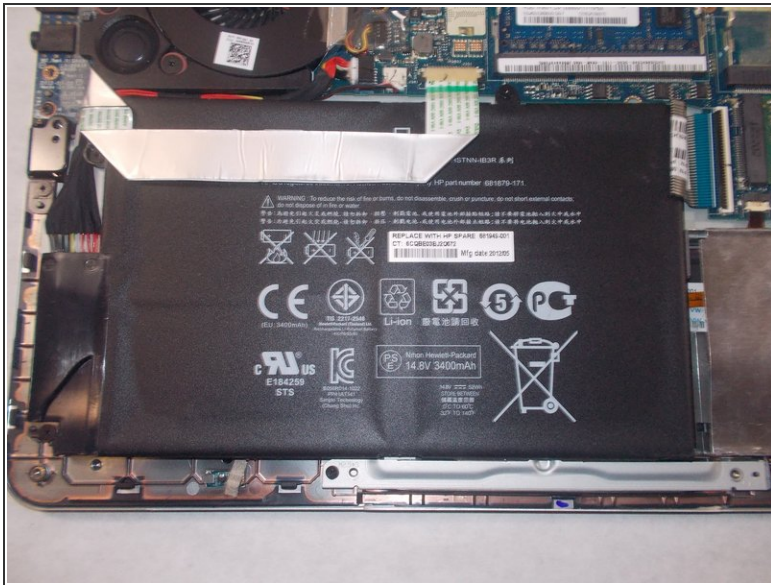
- Using a small (size 0) Phillips head screwdriver, remove the twelve 5.5 mm external Phillips head screws that connect the back plate to the device.
- ☑ Make sure to set the screws aside in a safe place so that you do not lose them, as they will be needed to reattach the backplate later.

Step 4



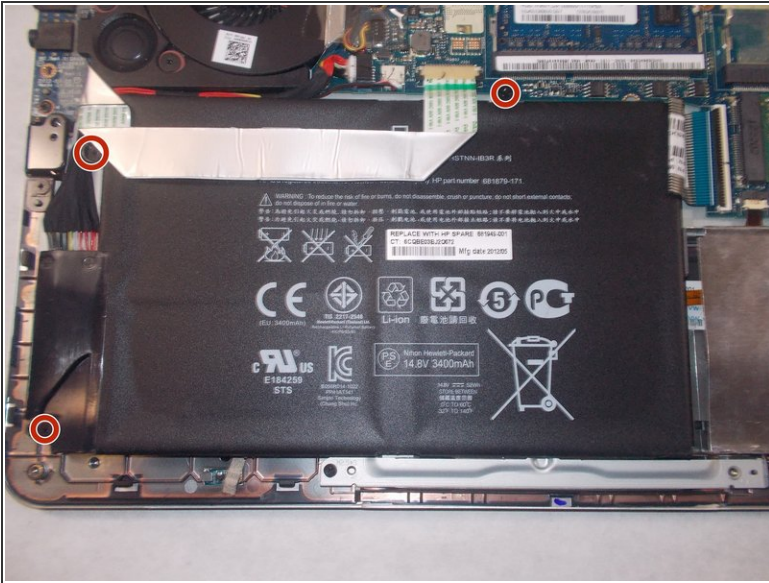
- Using the plastic opening tool, gently pry off the back plate from the device.

Step 5



- i The large black box with the white warning images is the battery.
- Move the ribbon cable so that it is no longer on top of the battery.

Step 6



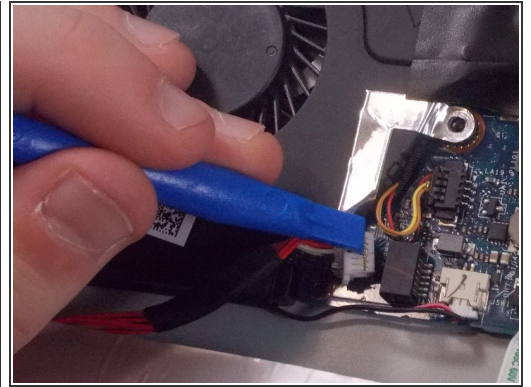
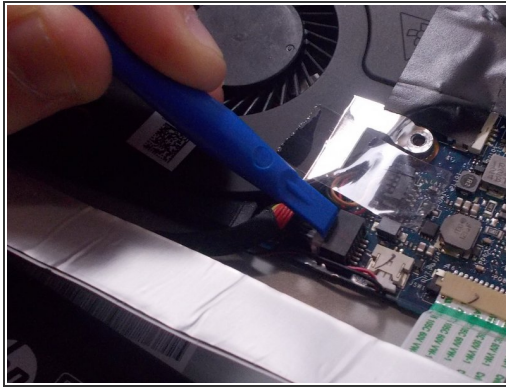
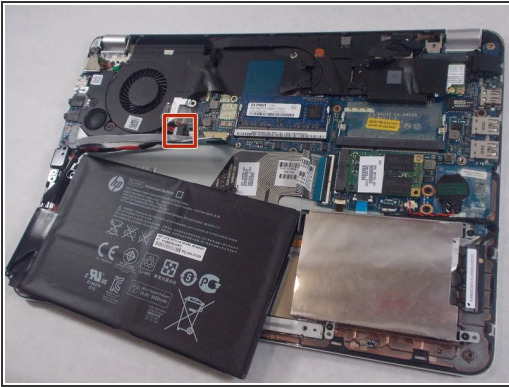
- Using a small (size 0) Phillips head screwdriver, remove the three 3.5 mm Phillips head internal screws that hold the battery in place.
- ⓘ Make sure not to lose these internal screws; they will later be used to reattach the battery.

Step 7



- Lift up the battery and remove it from the slot as shown.

Step 8



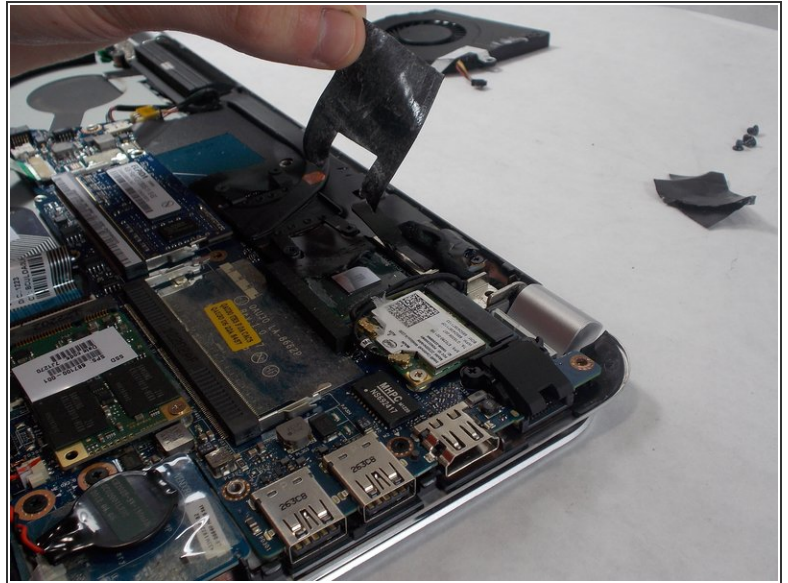
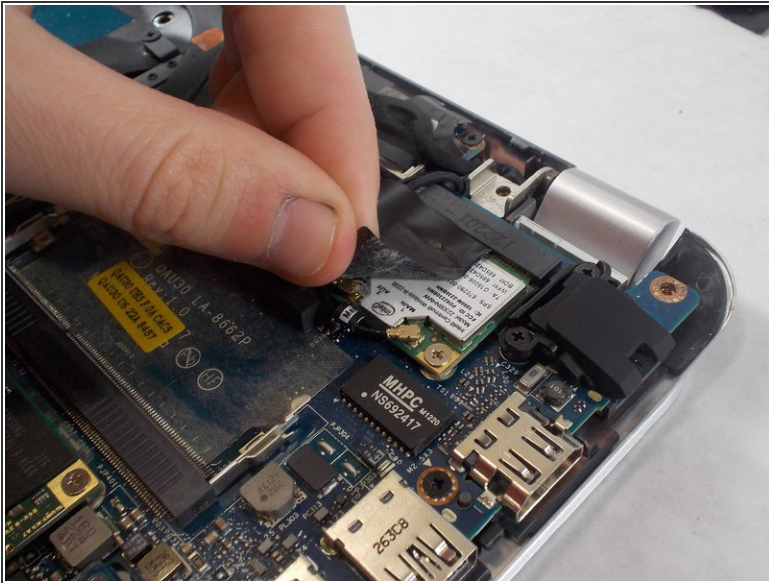
- Use the plastic opening tool to disconnect the battery cable.

Step 9



- Lift up the battery and remove it from the device.

Step 10 — Bluetooth Module



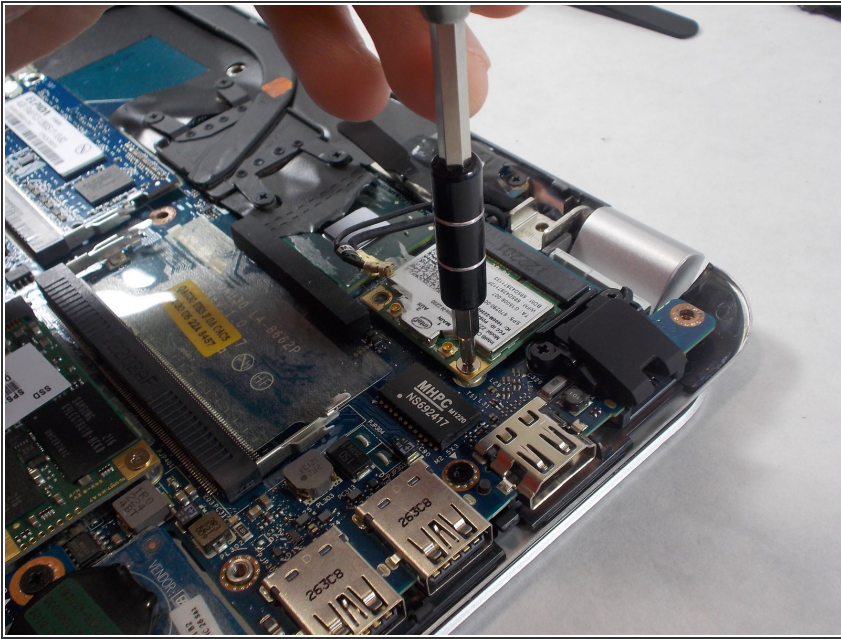
- Remove the tape holding the power connector cable and loosen the cable from the routing channel to gain access to the bluetooth module.

Step 11



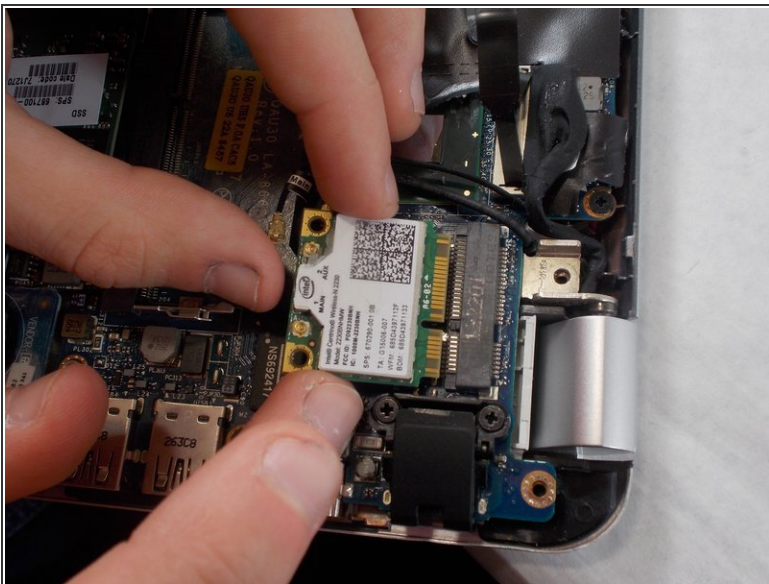
- Use a pair of small needle nose pliers or tweezers to disconnect the antenna of the bluetooth module.

Step 12



- Using a #0 Phillips head screwdriver, remove the two 3 mm size 0 screws securing the Bluetooth module in place.

Step 13



- Grasp the bluetooth module by its sides and remove it from the computer by wiggling gently. Then place the bluetooth module in an anti-static bag.

To reassemble your device, follow these instructions in reverse order.

This document was generated on 2020-04-04 08:47:00 AM (MST).

