



HP Envy Ultrabook 4-1015dx Hard Disk Drive Replacement

This guide will demonstrate how to remove and replace the hard drive in your HP Envy Ultrabook 4-1015dx.

Written By: Cameron DiBenedetto



INTRODUCTION

If you are having issues with your hard disk drive, this guide explains how to remove the drive from the device for troubleshooting purposes or to insert a replacement hard drive.

TOOLS:

- [Phillips #0 Screwdriver](#) (1)
 - [iFixit Opening Tools](#) (1)
-

Step 1 — Battery



- Make sure that the device is turned off and that all external devices are removed.

Step 2



- Flip the device over so that the back plate is facing upwards.

Step 3



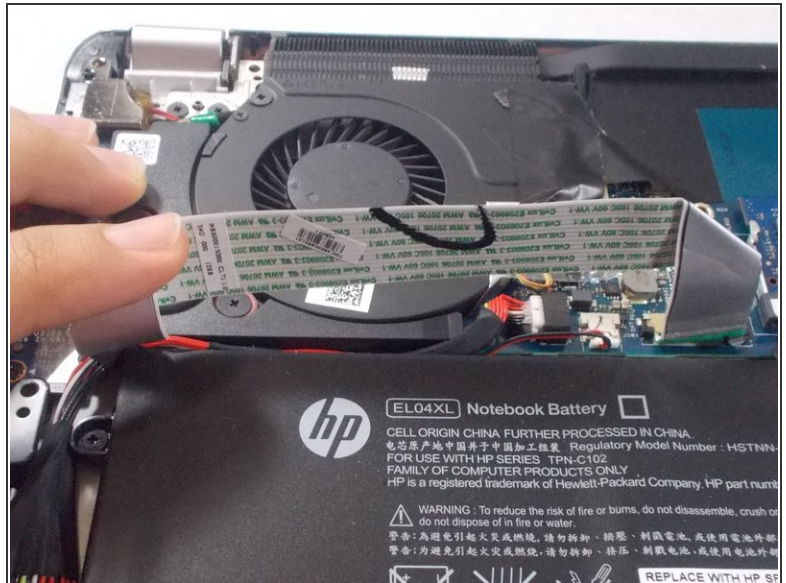
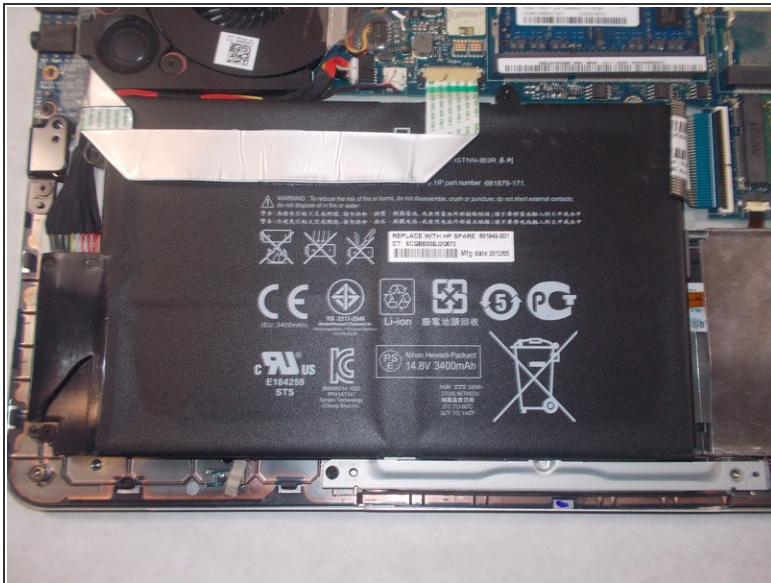
- Using a small (size 0) Phillips head screwdriver, remove the twelve 5.5 mm external Phillips head screws that connect the back plate to the device.
- ☑ Make sure to set the screws aside in a safe place so that you do not lose them, as they will be needed to reattach the backplate later.

Step 4



- Using the plastic opening tool, gently pry off the back plate from the device.

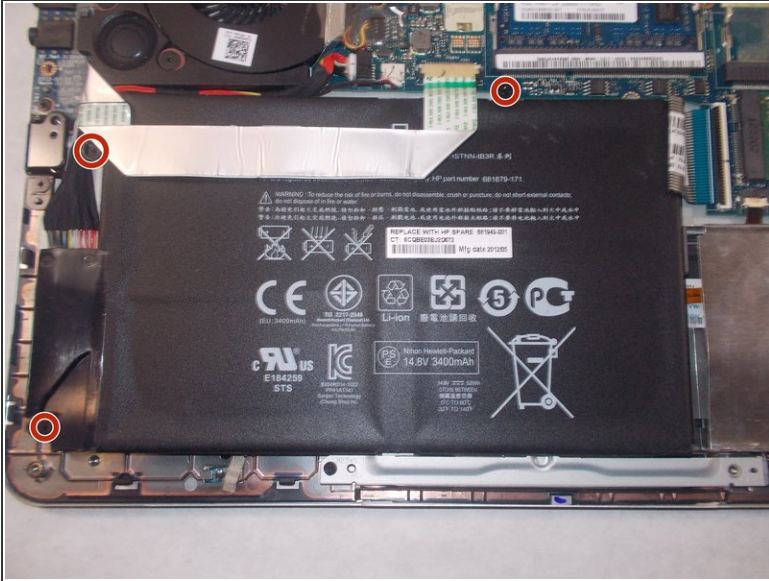
Step 5



i The large black box with the white warning images is the battery.

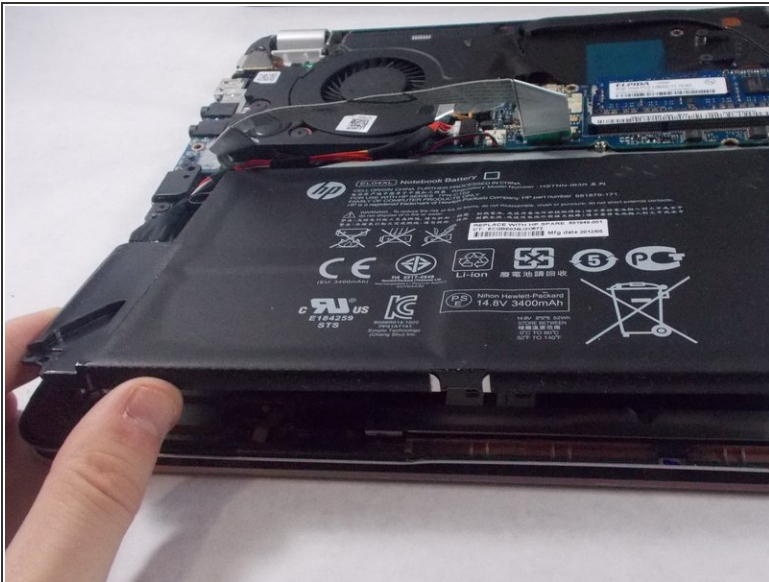
- Move the ribbon cable so that it is no longer on top of the battery.

Step 6



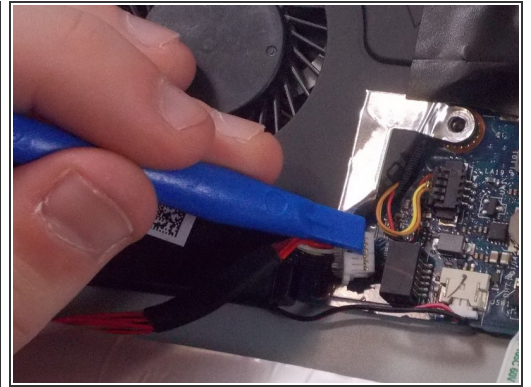
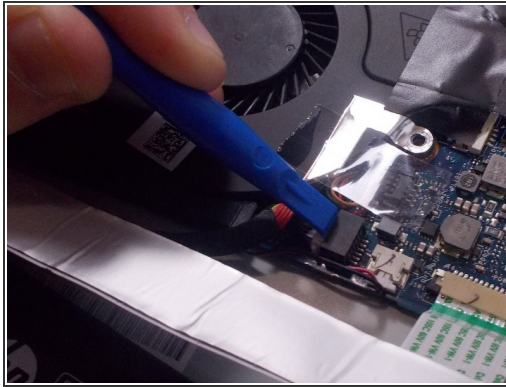
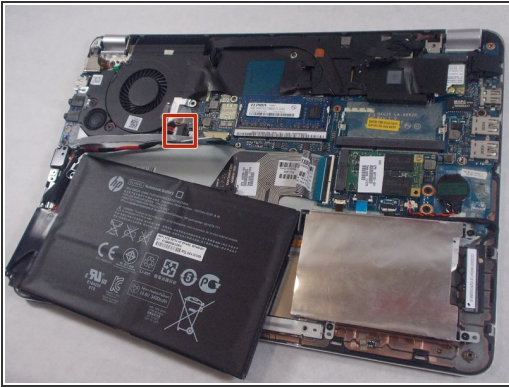
- Using a small (size 0) Phillips head screwdriver, remove the three 3.5 mm Phillips head internal screws that hold the battery in place.
- ⓘ Make sure not to lose these internal screws; they will later be used to reattach the battery.

Step 7



- Lift up the battery and remove it from the slot as shown.

Step 8



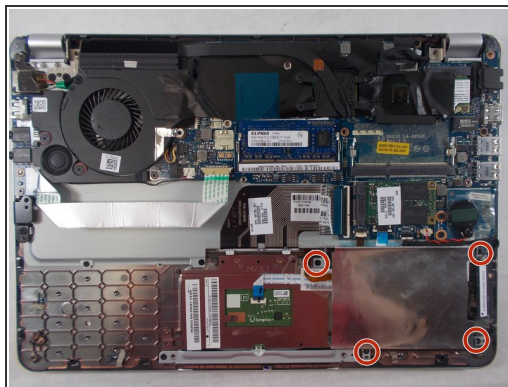
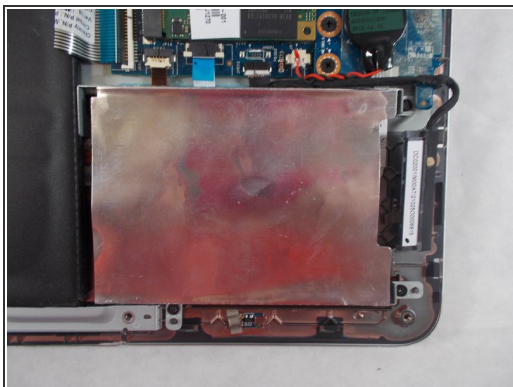
- Use the plastic opening tool to disconnect the battery cable.


Step 9



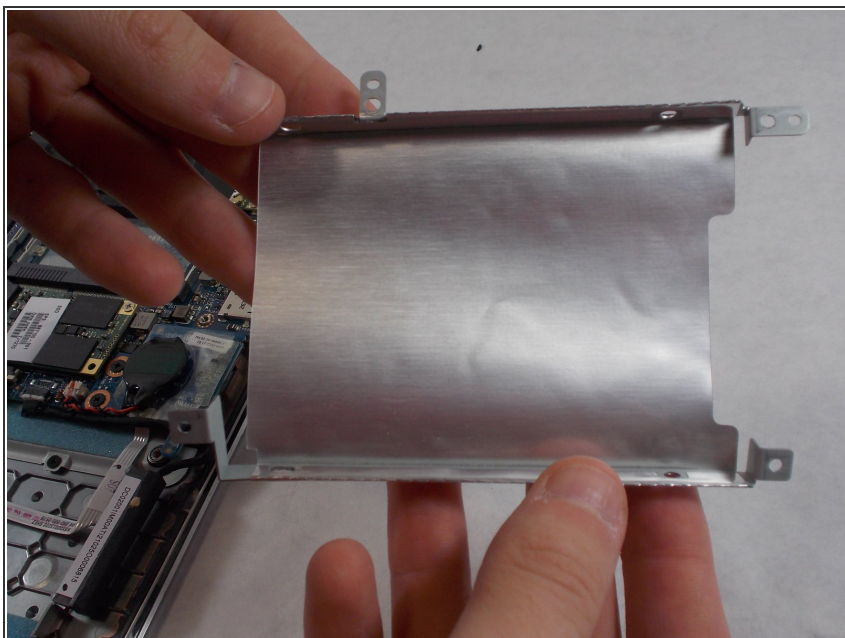
- Lift up the battery and remove it from the device.

Step 10 — Hard Disk Drive



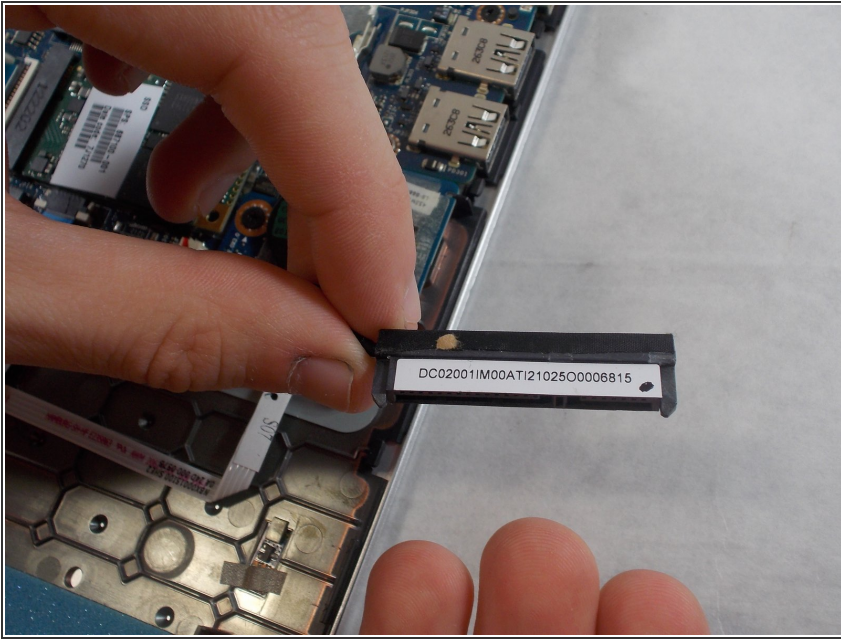
-  The hard disk drive is under a metallic looking case in the bottom-right corner of the device.
- Using a size 0 Phillips head screwdriver, remove the four 3 mm size 0 screws attaching the hard drive casing to the device.

Step 11



- Remove the hard drive case.

Step 12



- Unplug the hard drive from the hard drive plug.

To reassemble your device, follow these instructions in reverse order.