



HP Envy Ultrabook 4-1043cl Hard Drive Replacement

Use this guide to replace the hard drive in your HP Envy Ultrabook 4-1043cl.

Written By: Shen Zhao



INTRODUCTION

This guide is used to help you replace the hard disk drive for HP Envy Ultrabook 4-1043cl. When you accidentally drop your laptop down, it is time to replace a new hard disk drive. This guide provides detailed step by step instructions to ensure your successful replacement. You may need an iFixit PRO TECH TOOLKIT to remove the screws and unwarp the bottom enclosure. Before you start, make sure the charger is DISCONNECTED, and the laptop is shut down for safety reasons. And always remember to remove the battery before trying to disconnect hard disk drive. You may want to make a copy of the content in a hard disk drive before you remove it. Meanwhile, it is highly recommended that use different containers to place the removed screws from different parts in case you may forget where some screws belong.



TOOLS:

- [iFixit Opening Tools](#) (1)
 - [Phillips #00 Screwdriver](#) (1)
-

Step 1 — Battery



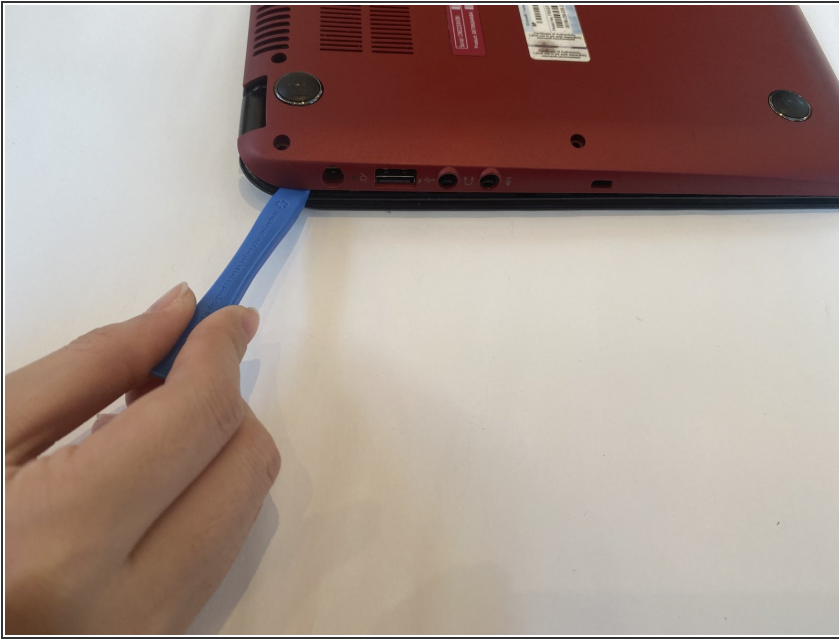
- Flip the laptop over so the bottom is facing you.

Step 2



- Remove twelve 7.5 mm screws by using the Phillips #00 screwdriver.

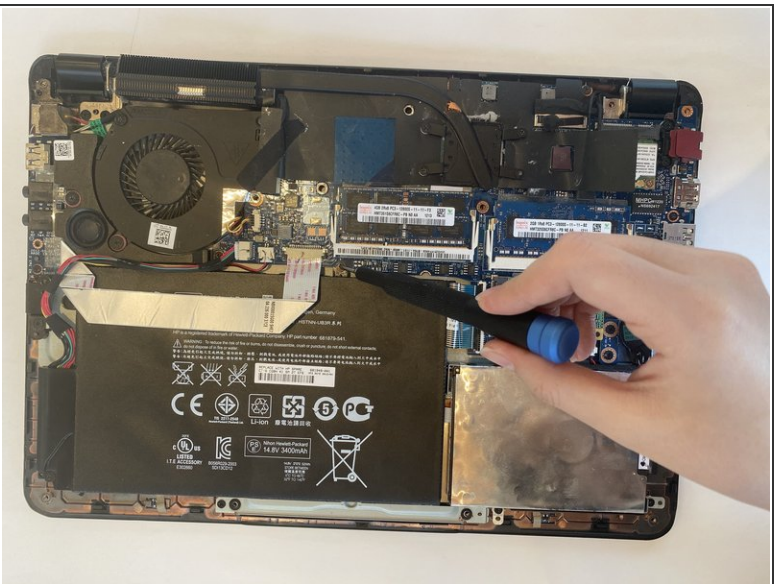
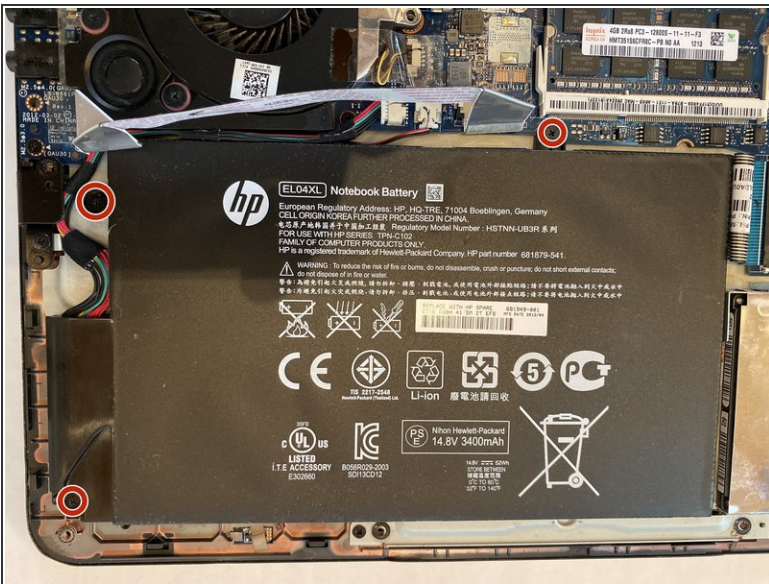
Step 3



- Use plastic opening tool to remove the back cover.

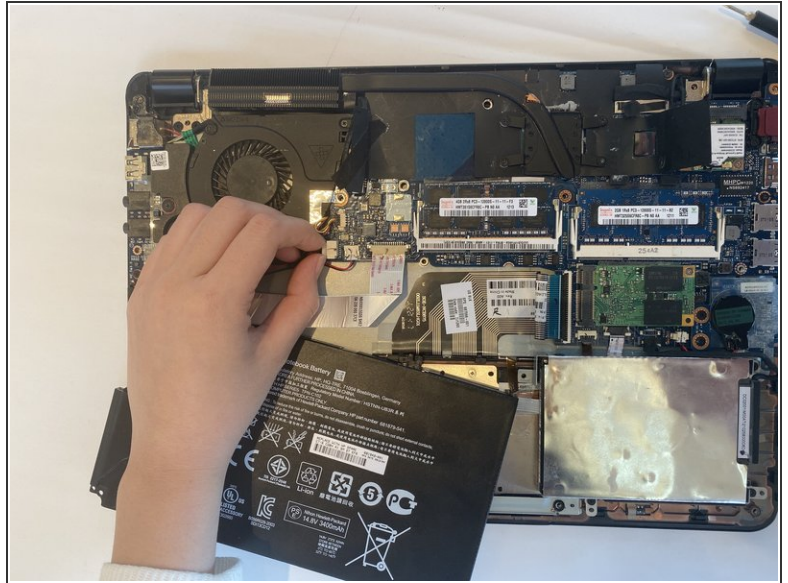
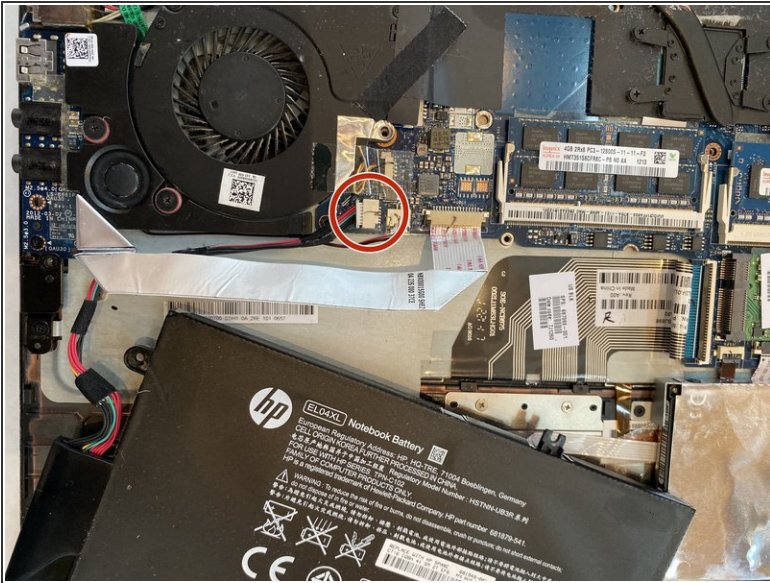
⚠ You might want to remove it slowly and gently because the back cover is very thin and fragile.

Step 4



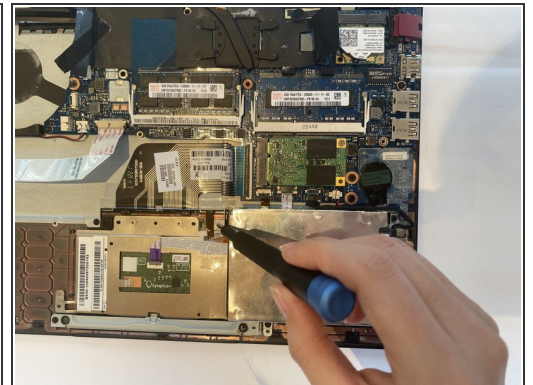
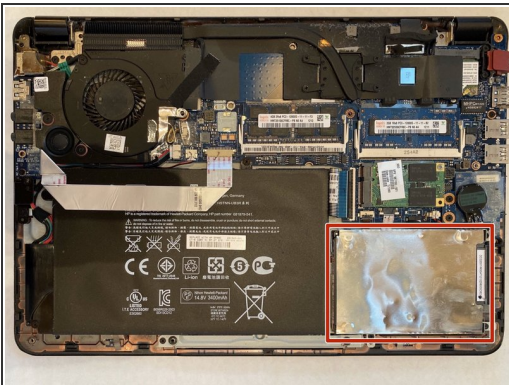
- Remove three 4.2mm screws by using the Phillips #00 screwdriver.

Step 5



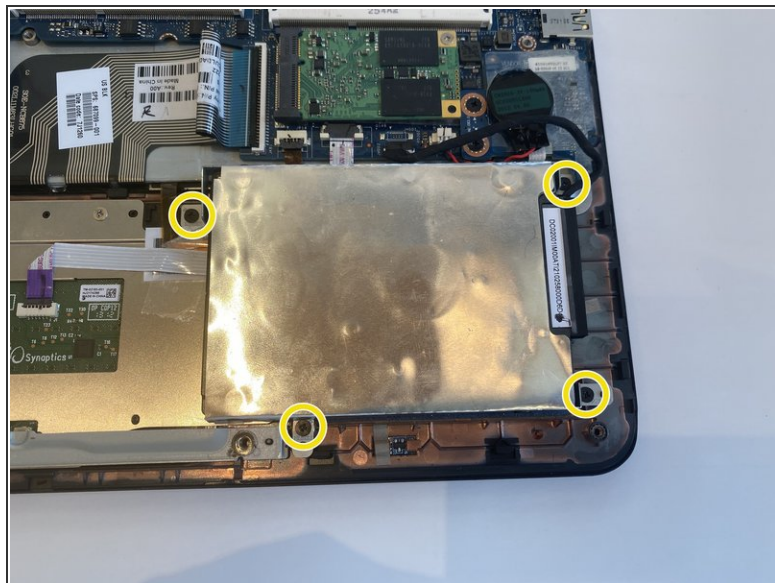
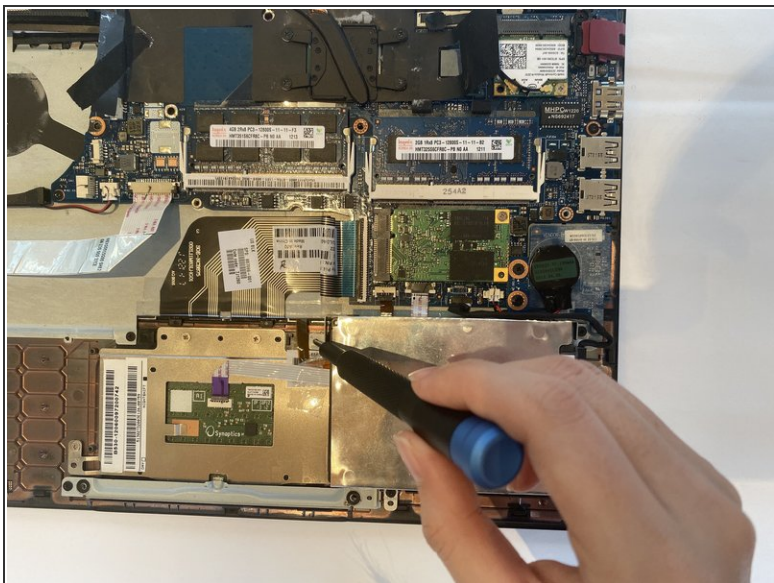
- Disconnect the battery cable from the motherboard and remove the battery from the device.

Step 6 — Hard Drive



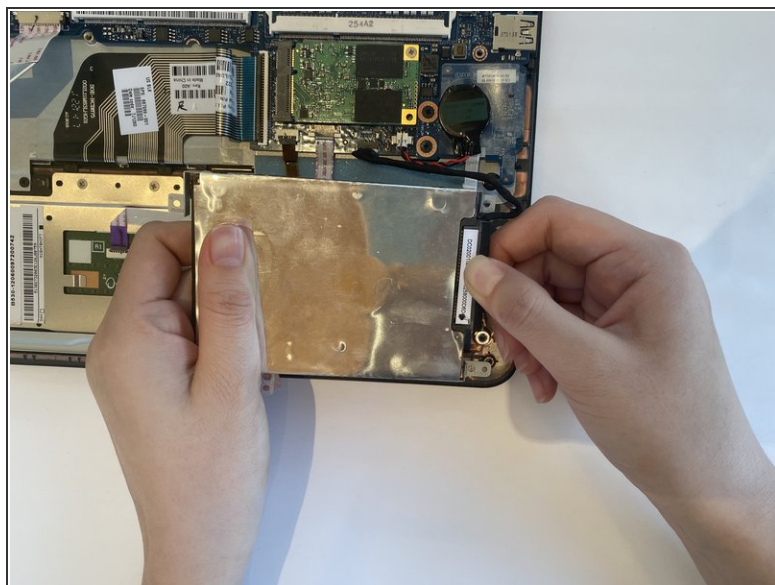
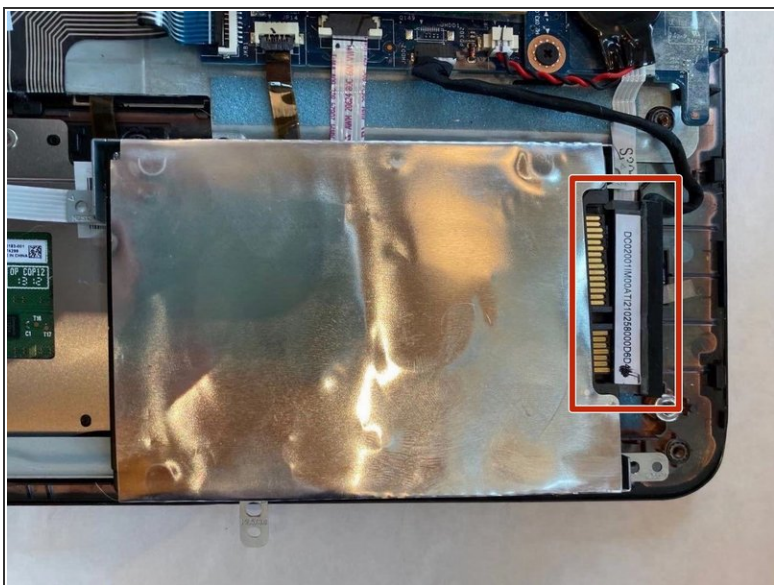
- The hard drive is in the bottom right corner of the device which is packed by a silver metal shell.
- Use a Phillips #00 screwdriver to remove the four 4.0 mm screws securing the hard drive to the top cover.

Step 7



- Use a Phillips #00 screwdriver to remove the four 4.0 mm screws securing the hard drive to the top cover.

Step 8



- Pull the hard disk drive out of the connector socket and remove it from the device.