



# HP Envy dv6-7363cl Fan Replacement

This guide will teach you how to remove and replace a faulty fan.

Written By: dylananthony



## INTRODUCTION

Reader will be able to successfully replace their fan assembly in the device. A basic understanding of simple tools such as a screwdriver is needed. Any form of electricity must be removed from device, including the charging cable and battery. Reader will need to be able to gently disassemble almost entire laptop.



### TOOLS:

- [Spudger](#) (1)
- [Phillips #0 Screwdriver](#) (1)



### PARTS:

- [HP Pavilion DV6000 Fan](#) (1)

## Step 1 — Battery



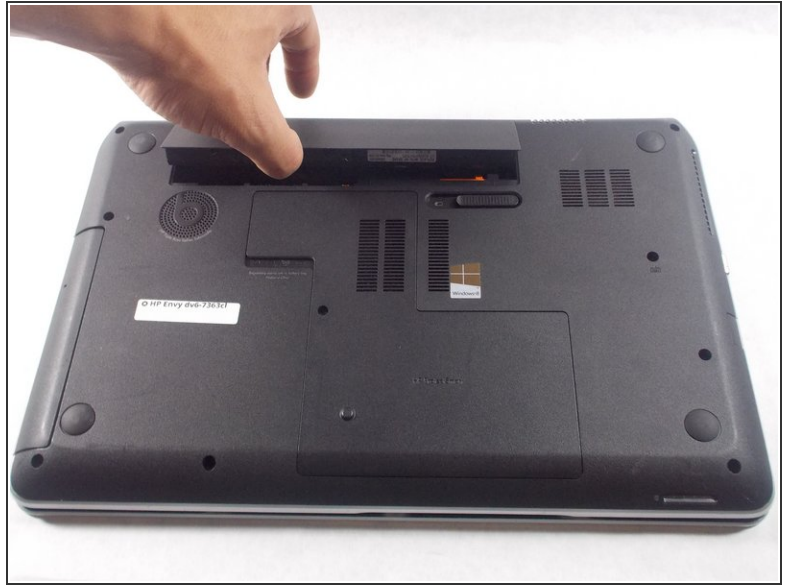
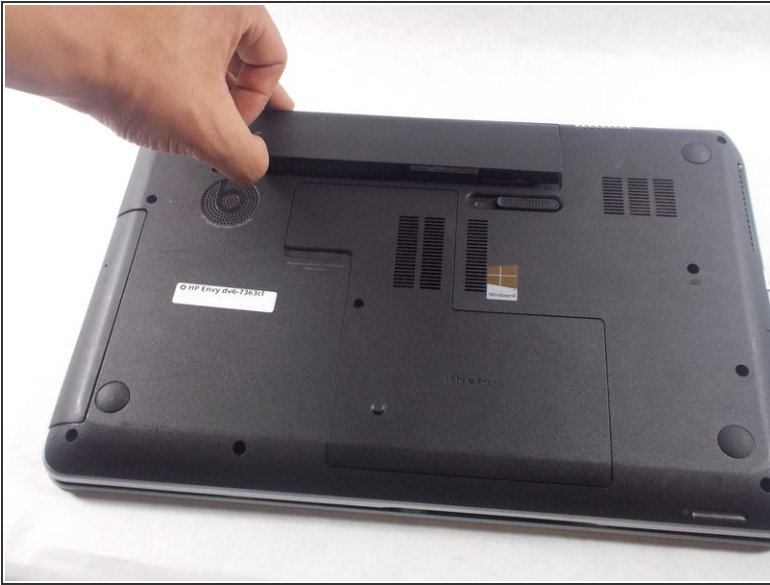
- Flip the device upside-down so that its bottom is facing up.

## Step 2



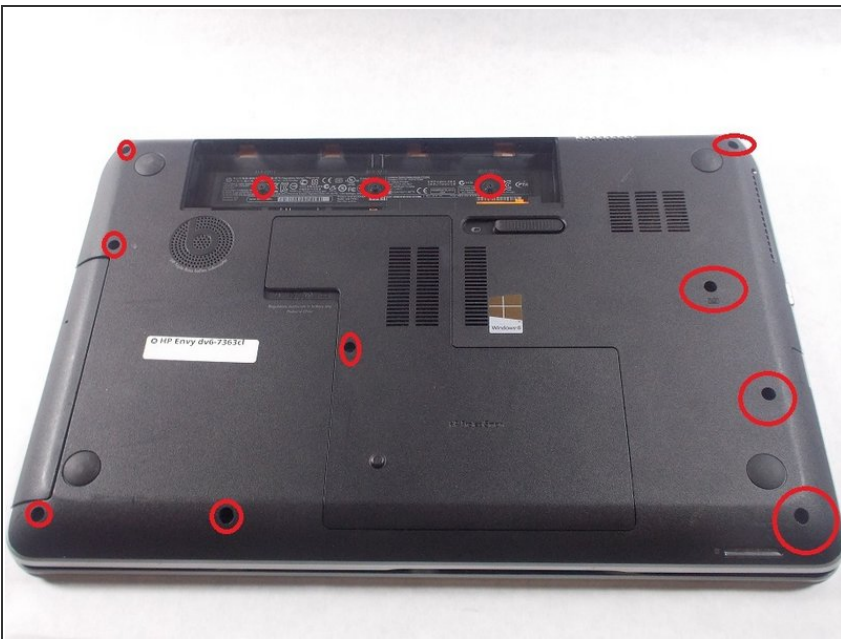
- Push the lever underneath the battery to the left as shown in the picture.

## Step 3



- Lift the battery up out of its socket.

## Step 4 — Fan



- Remove the circled screws from the back panel.

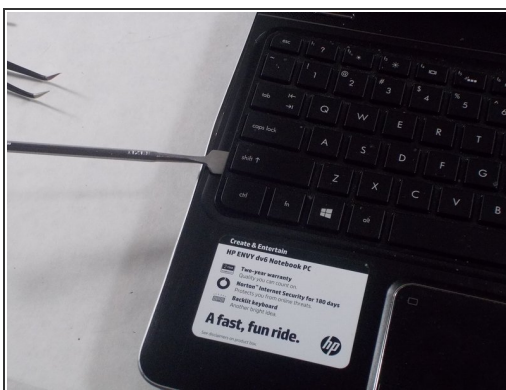
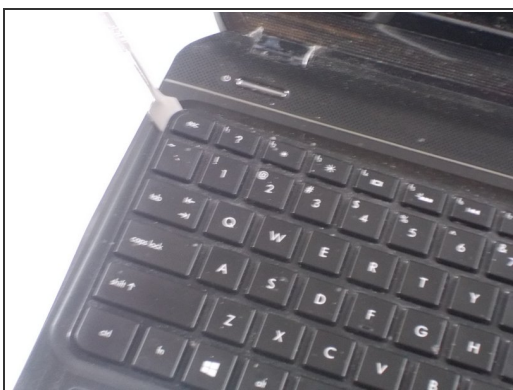


## Step 5



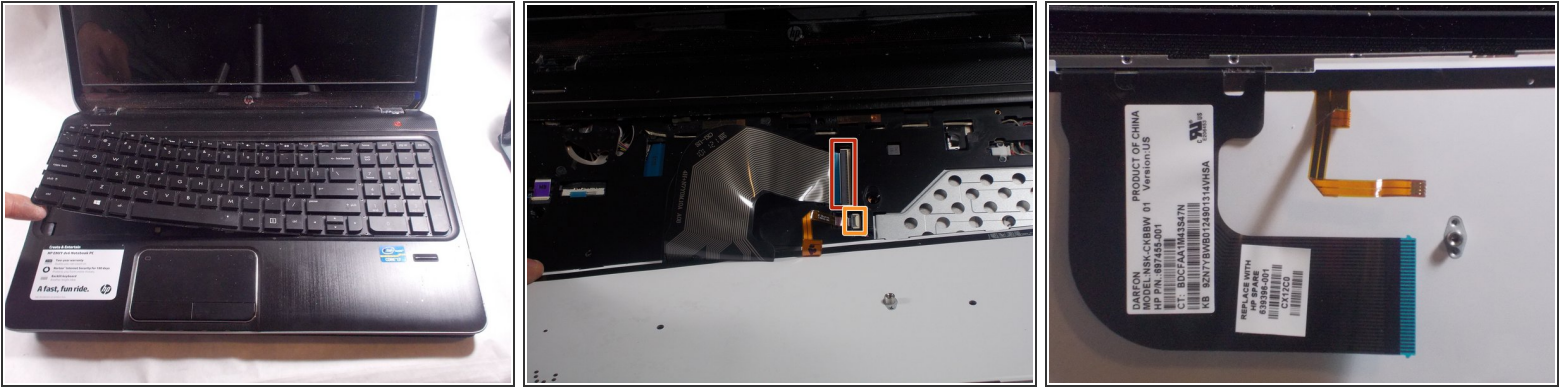
- Lift and remove the back panel of the device.

## Step 6



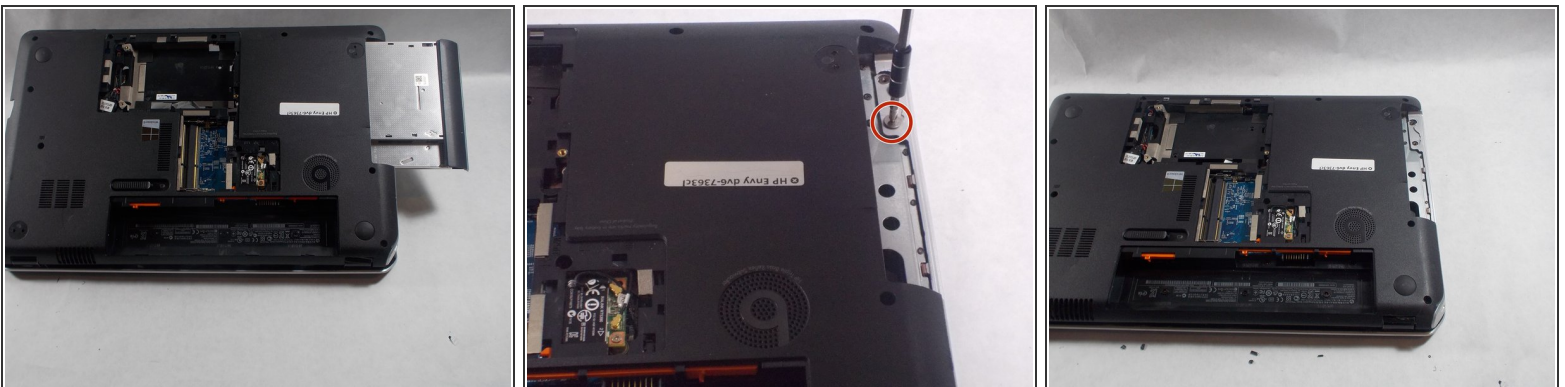
- Flip the laptop back over and carefully pry the keyboard frame out of the device.

## Step 7



- Lift the keyboard out of the device and carefully remove ribbon cables.

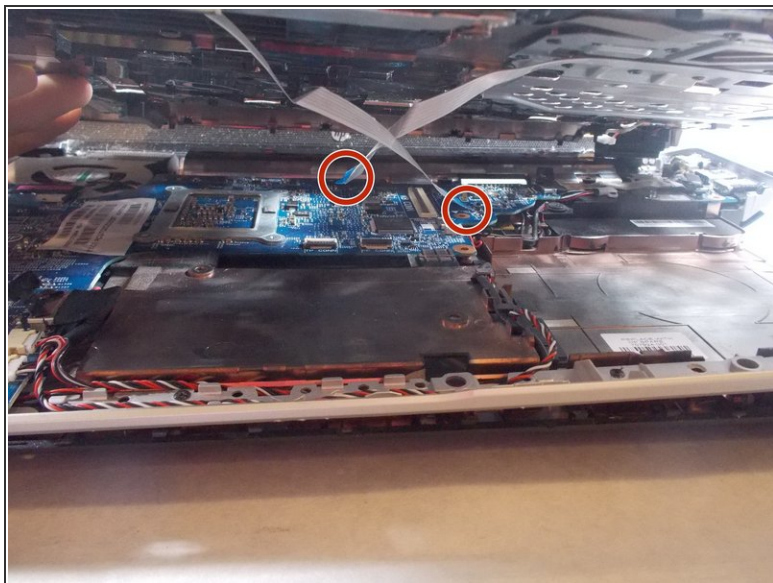
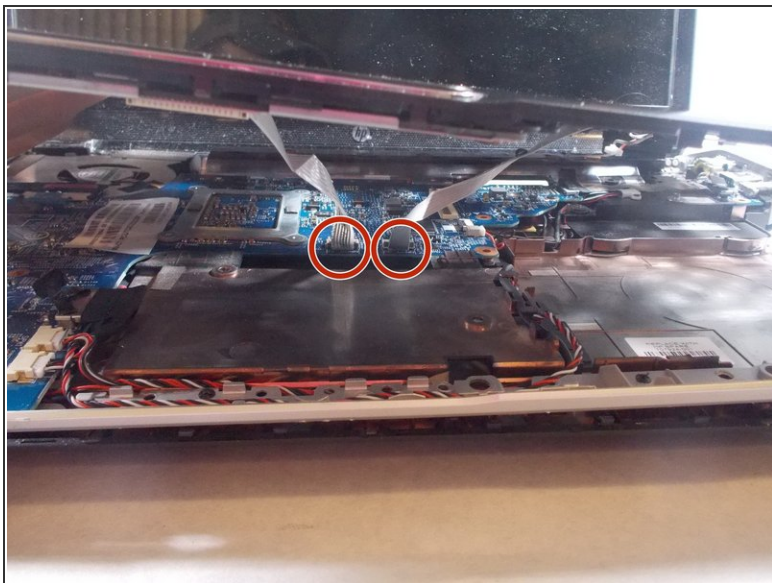
## Step 8



- Flip device onto its back, remove disk tray and circled screw.

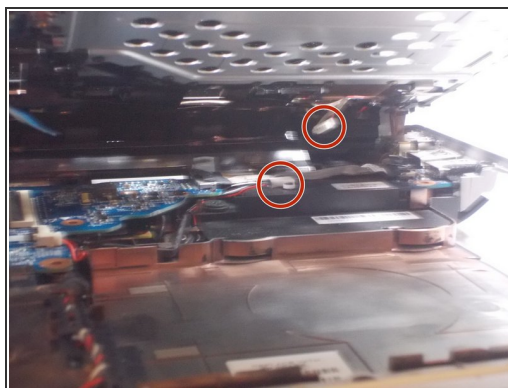
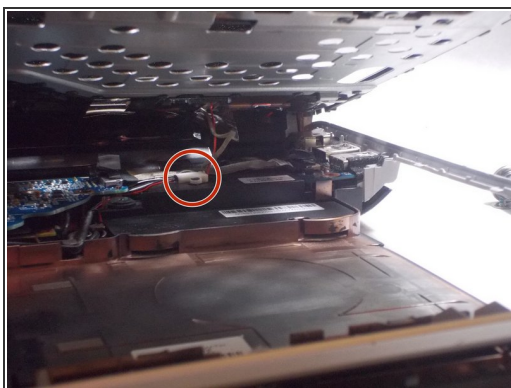


## Step 9



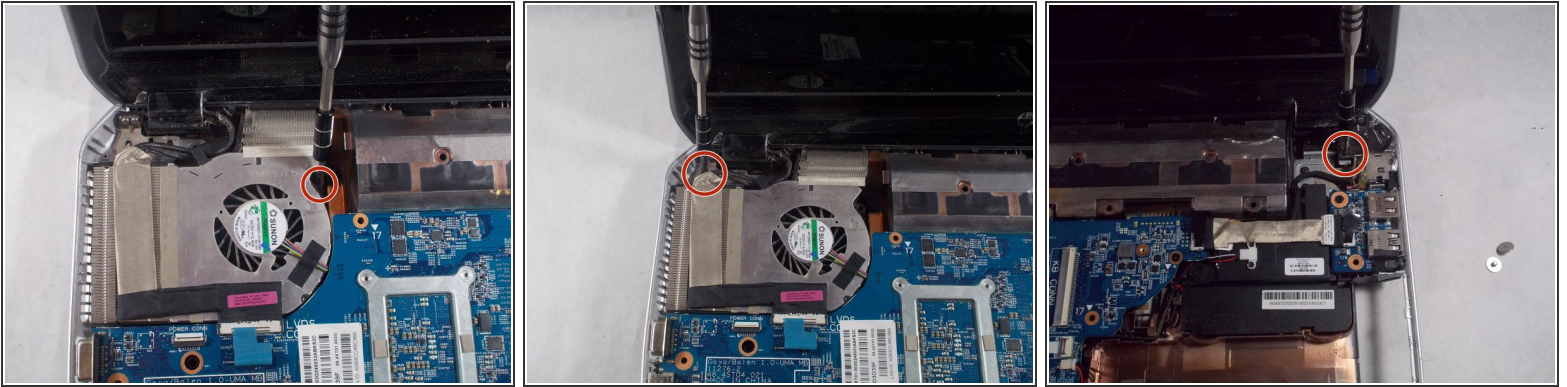
- Flip device right-side-up and remove ribbon cables from plastic cover beneath keyboard. Remove plastic cover from device.

## Step 10



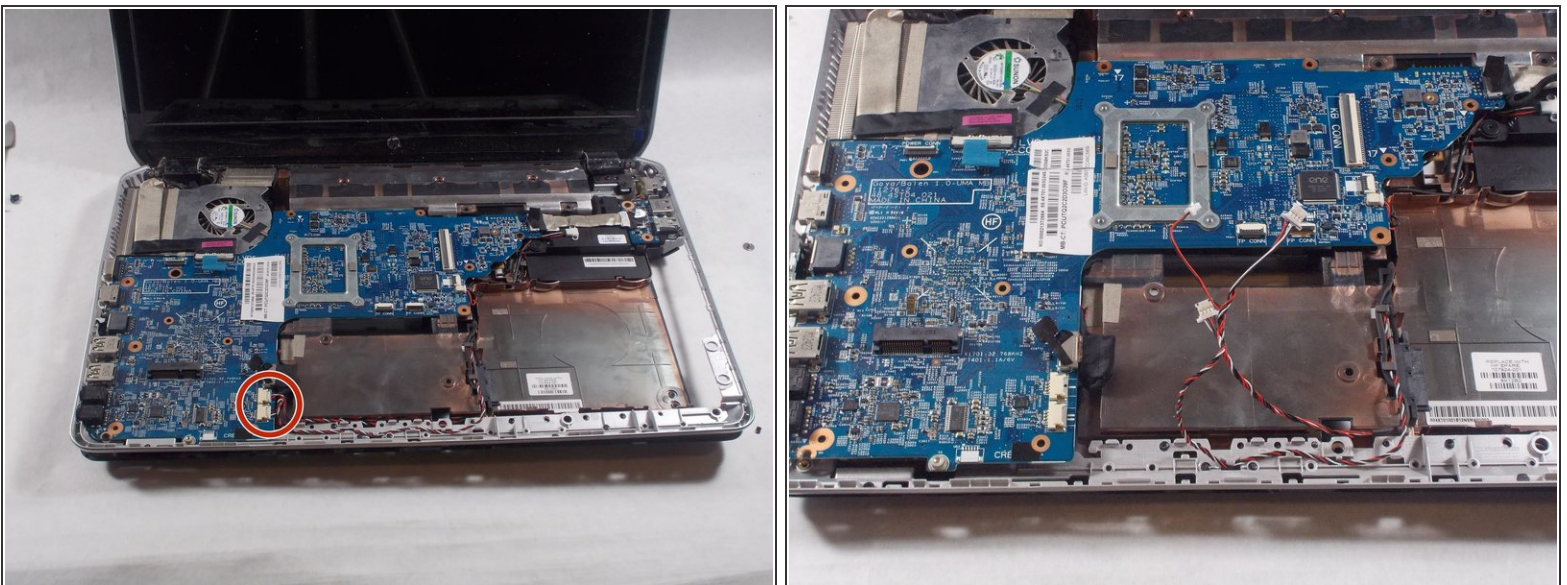
- Disconnect red cord from DVD drive and remove DVD drive.

## Step 11



- Remove circled screws.

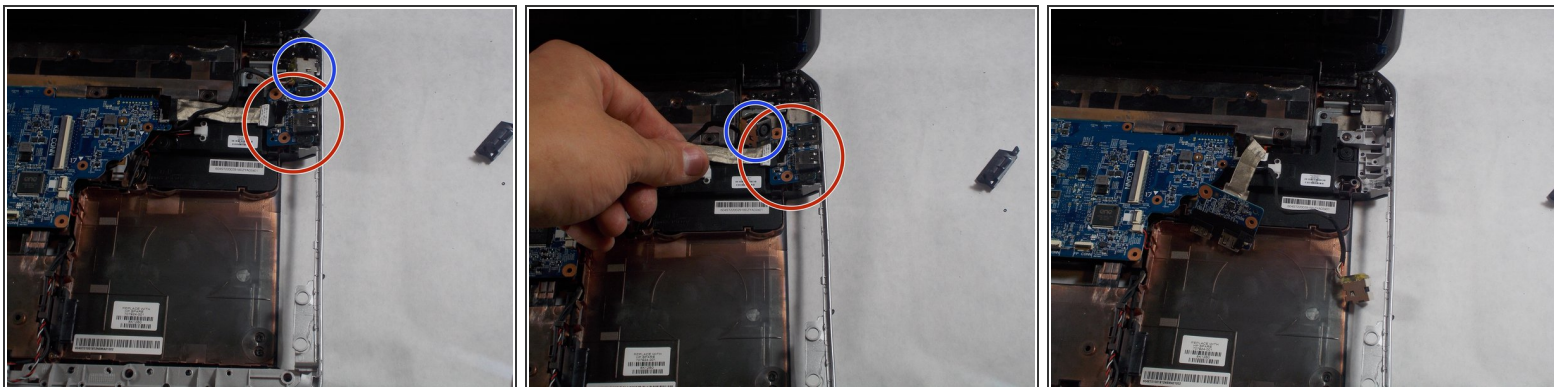
## Step 12



- Disconnect red and white cords from blue circuit board.

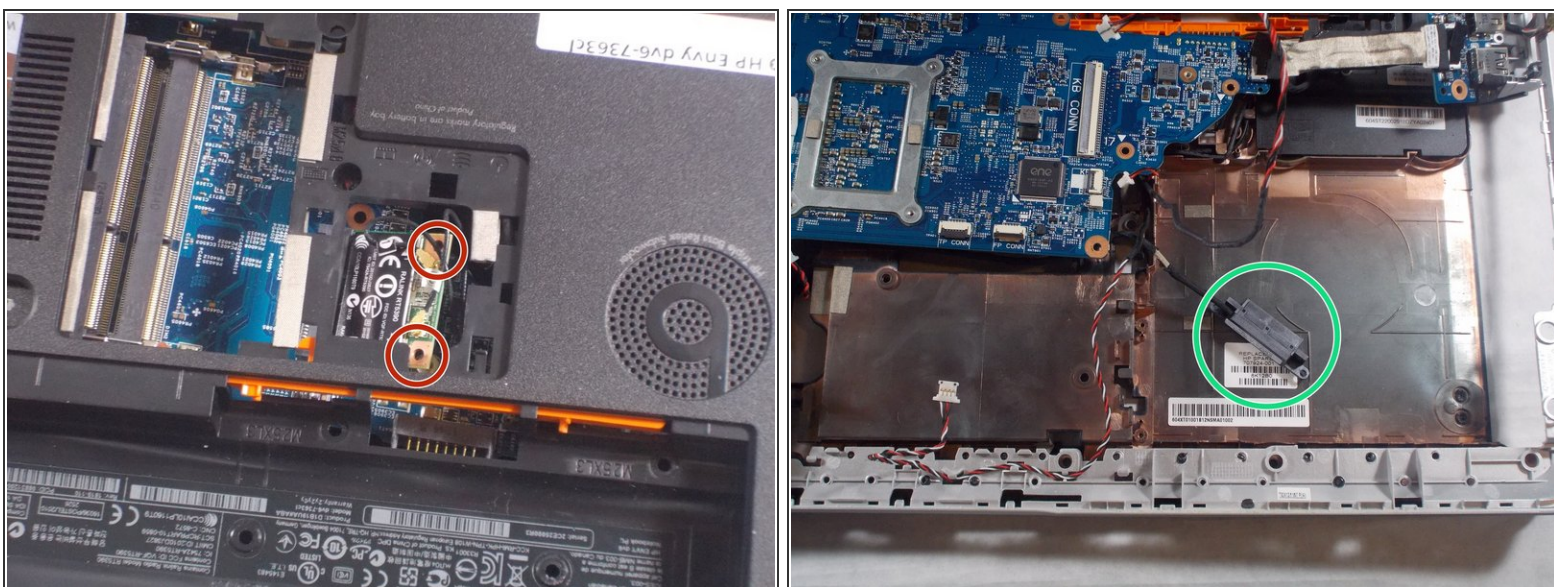


## Step 13



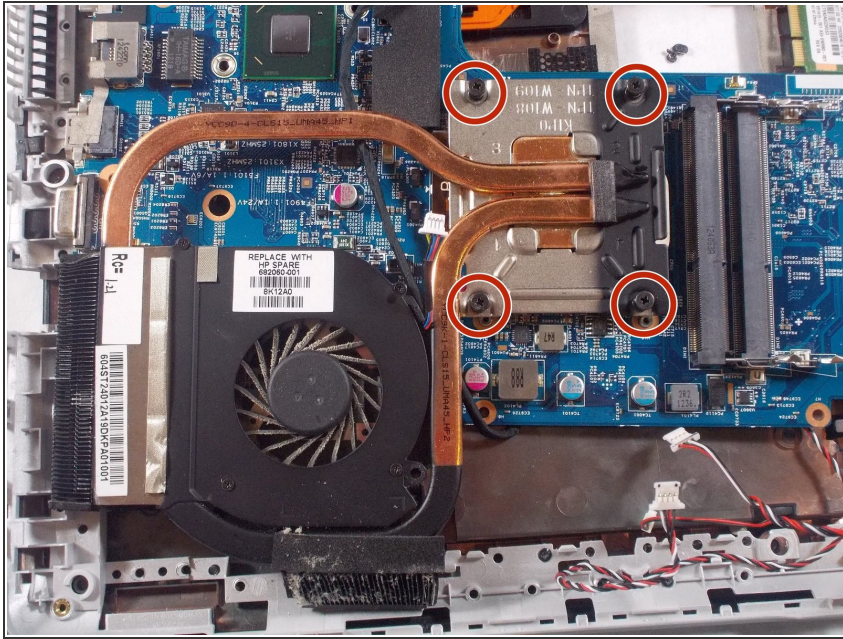
- Gently pull circled pieces from their holsters.

## Step 14



- Turn device onto its back and remove circled screws from Wi-Fi card. Flip device back over and unscrew disk reader (circled in green).

## Step 15



- Remove circled screws from blue circuit board and lift fan assembly out of device.

To reassemble your device, follow these instructions in reverse order.