



# HP Envy dv6-7363cl Wi-fi Card Replacement

This teaches how to remove and replace a faulty Wi-Fi card.

Written By: dylananthony



## INTRODUCTION

Reader will be able to successfully replace their Wi-Fi card in the device. A basic understanding of simple tools such as a screwdriver is needed. Any form of electricity must be removed from device, including the charging cable and battery.



### TOOLS:

- [Tweezers](#) (1)
- [Phillips #0 Screwdriver](#) (1)



### PARTS:

- [Wi-Fi Card](#) (1)

## Step 1 — Battery



- Flip the device upside-down so that its bottom is facing up.

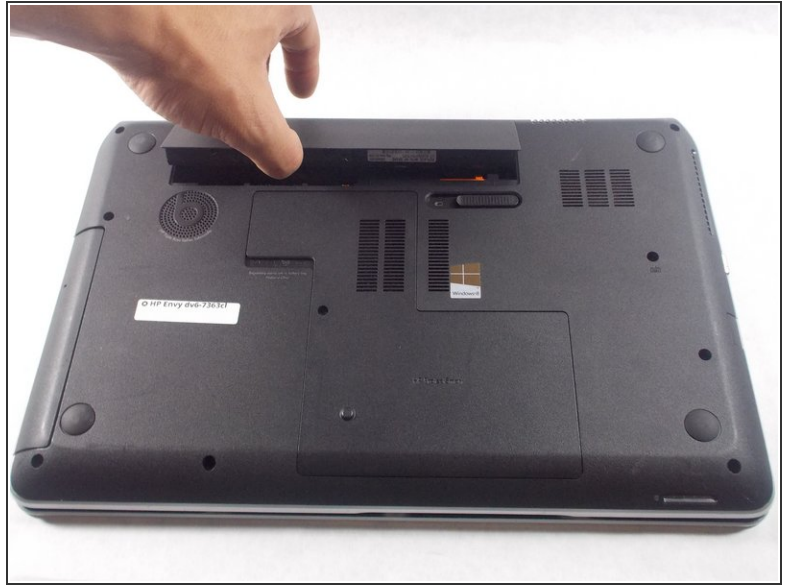
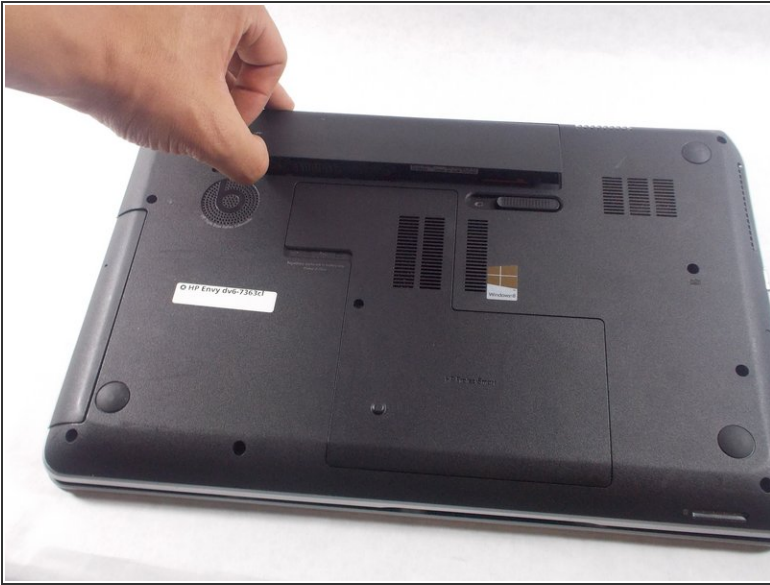
## Step 2



- Push the lever underneath the battery to the left as shown in the picture.



## Step 3



- Lift the battery up out of its socket.

## Step 4 — Wi-Fi Card



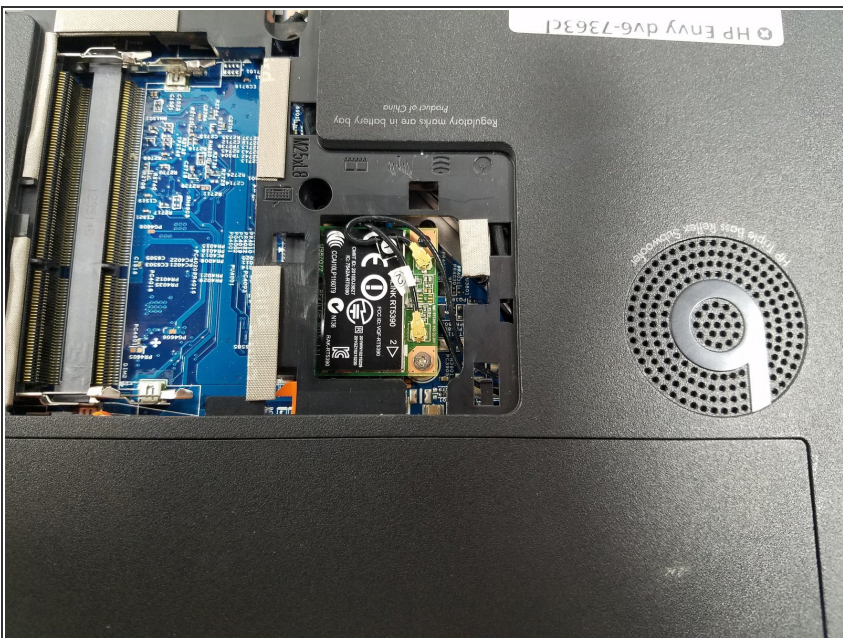
- After removing the battery, remove the circled screw.

## Step 5



- Remove the back cover.

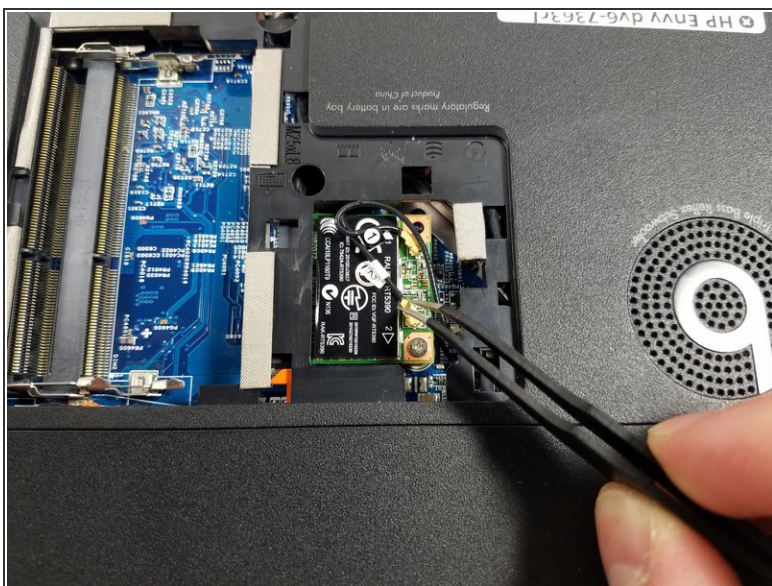
## Step 6



- With the back cover removed, locate the Wi-Fi card which is positioned next to the Beats logo.

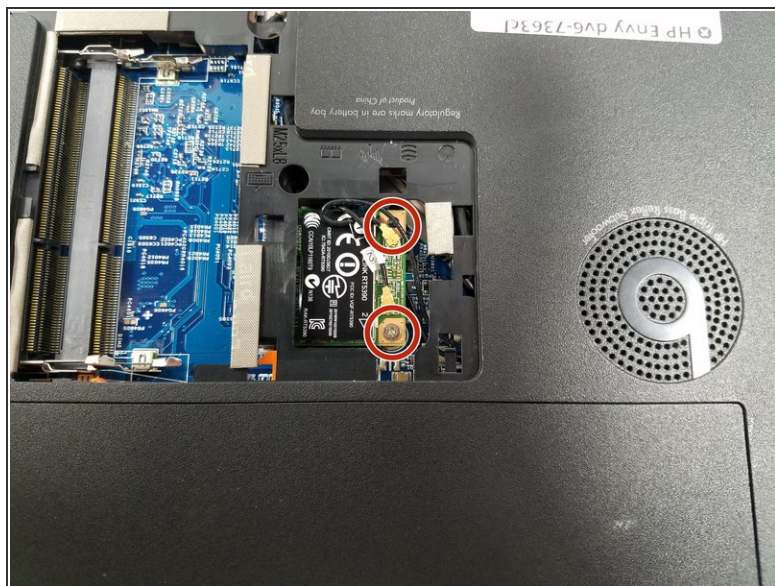


## Step 7



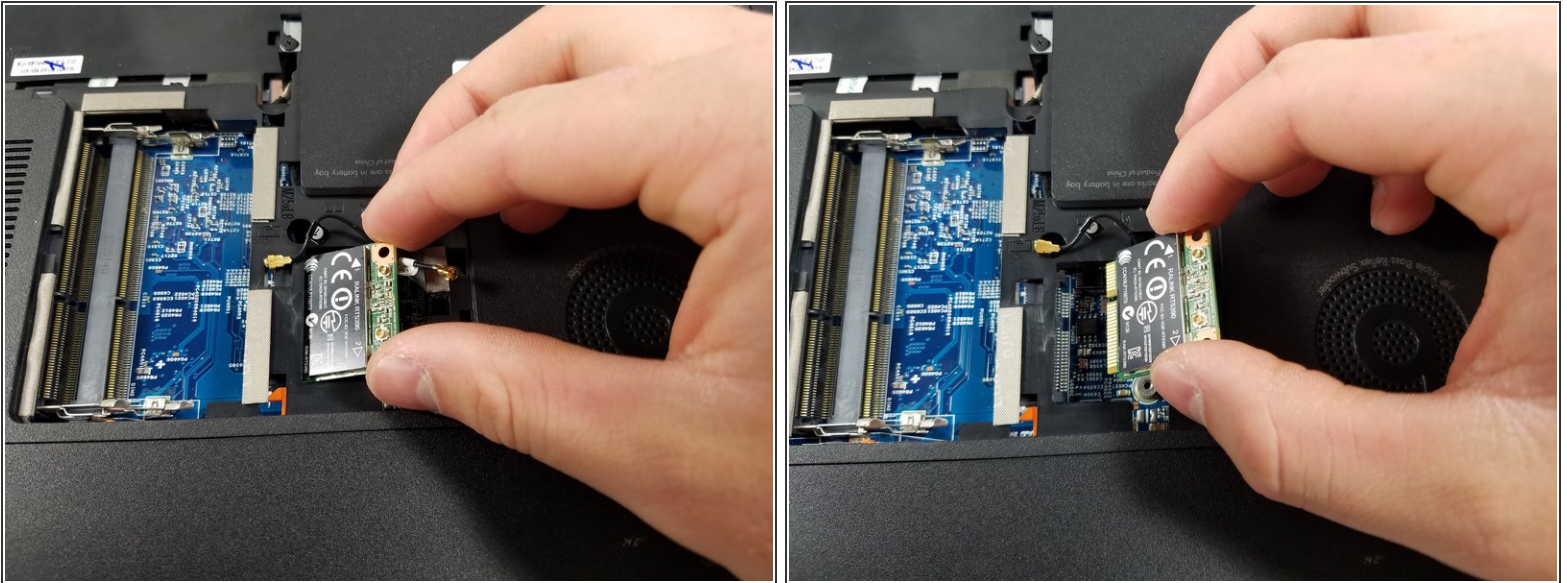
- Carefully remove gold-headed, black wires from Wi-Fi card with tweezers.

## Step 8



- After removing wires, remove circled screws from card.
- Note: Laptop shown only has one screw holding in Wi-Fi card. Some models may have both.

## Step 9



- Wi-Fi card will raise out of device when screw is removed.
- Gently pull card to the right to remove from device.

To reassemble your device, follow these instructions in reverse order.