



HP Envy dv7t-7200 Hard Drive Replacement

Use this guide to replace a faulty hard drive on your HP Envy dv7t-7200 if your laptop is running slowly, begins freezing, or has corrupt files.

Written By: Krystal



INTRODUCTION


Use this guide to replace a faulty hard drive on your HP Envy dv7t-7200 if your laptop is running slowly, begins freezing, or has corrupt files. There are two hard drives within this laptop that can be removed and replaced in a few steps.

TOOLS:

- [Phillips #1 Screwdriver](#) (1)
-

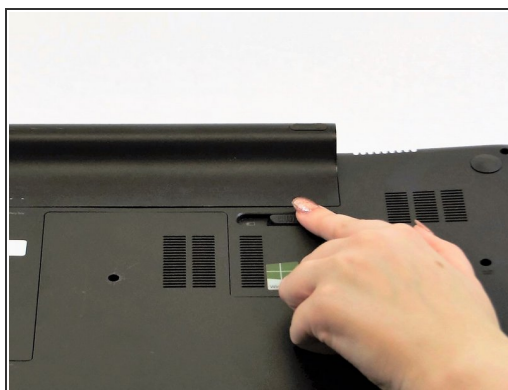
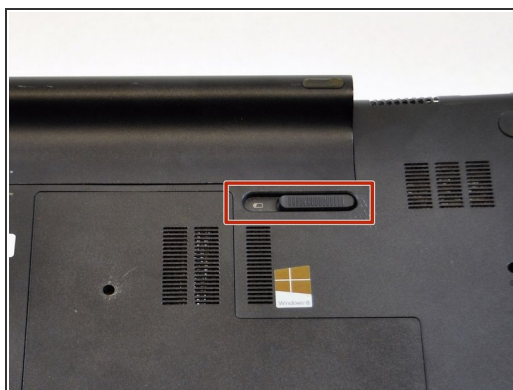
Step 1 — Battery



 Turn the power off and disconnect all cables and cords from the laptop.

- Place the computer on its top on a flat surface with the hinges facing away from you.

Step 2



- Slide the battery release latch to the left which is located on the right-hand side of the battery.

Step 3



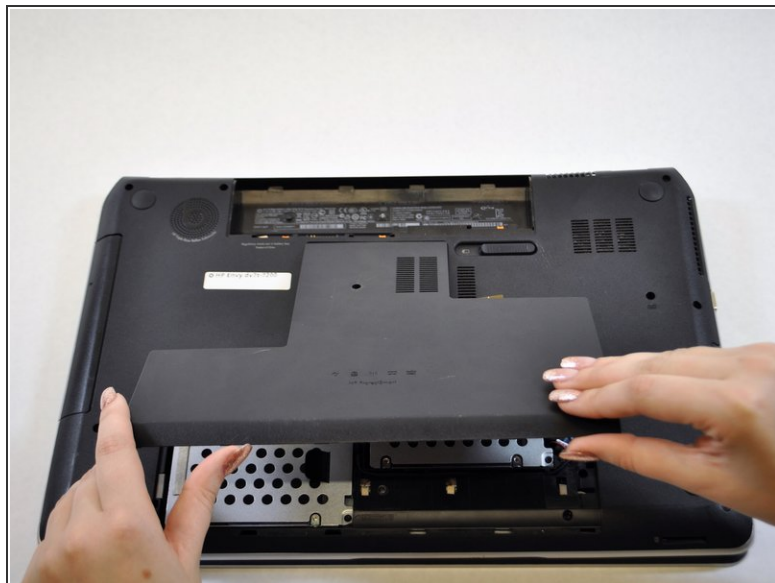
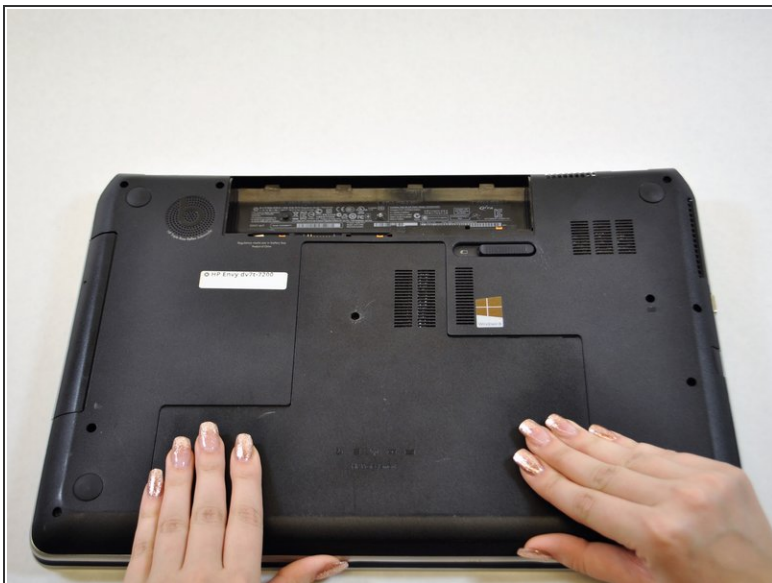
- Tilt the battery away from you and lift out.

Step 4 — Service Cover



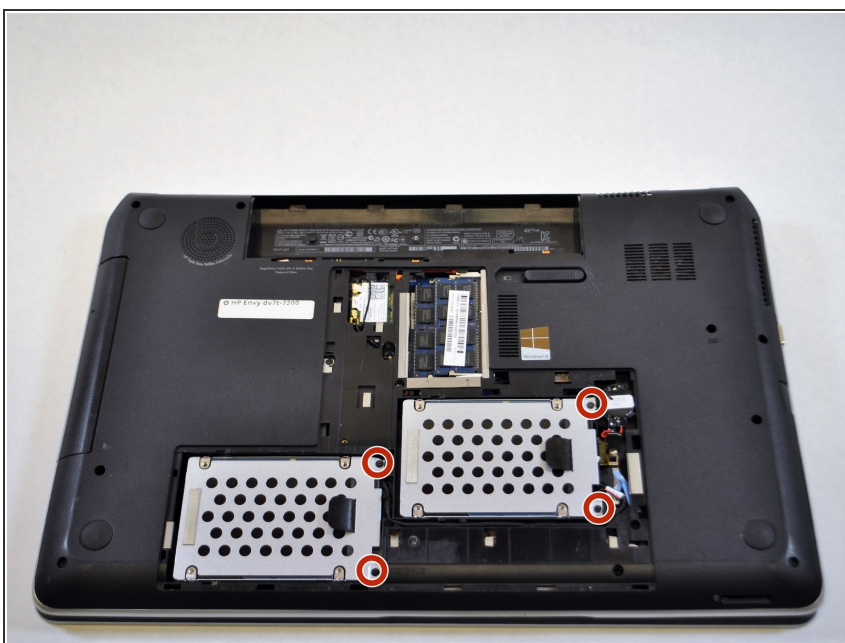
- Using a Phillips #01 screwdriver, remove the Phillips PM2.5×5.5 screw on the service cover.
- ⓘ This screw does not come out of the service cover completely once loosened.

Step 5



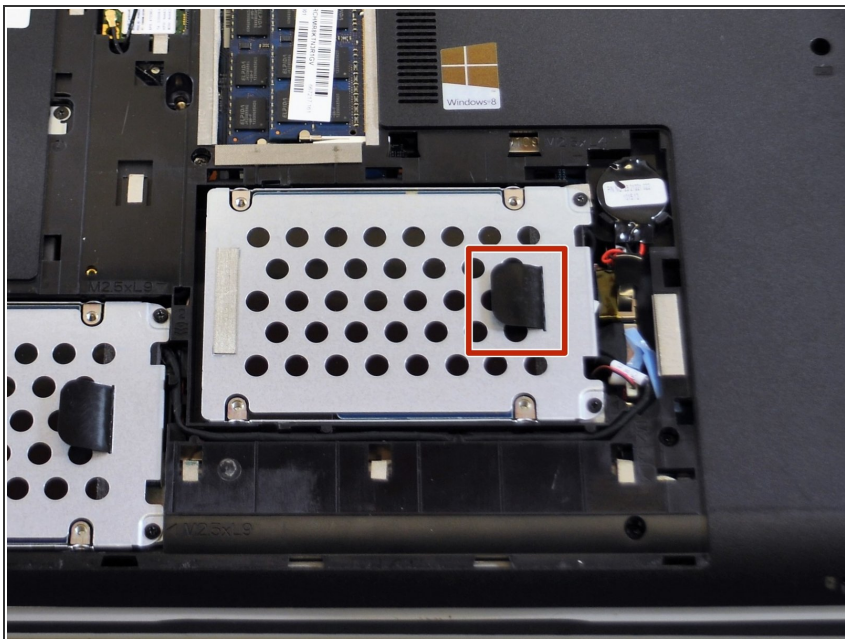
- Slide the service cover toward the front of the laptop.
- Lift the service cover to remove it from the laptop.

Step 6 — Hard Drive



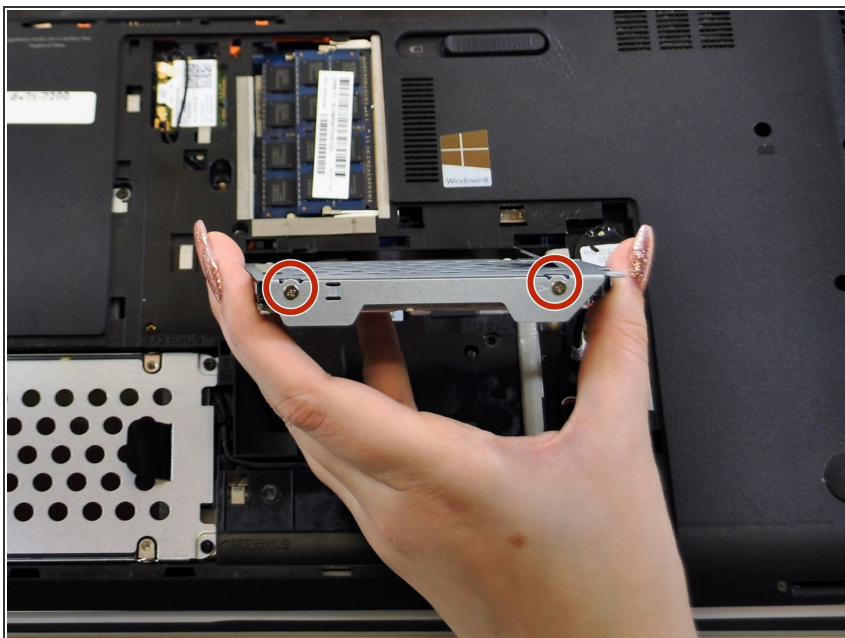
- Remove the 2 Phillips PM2.5x5.5 top screws from brackets on both hard drives.

Step 7



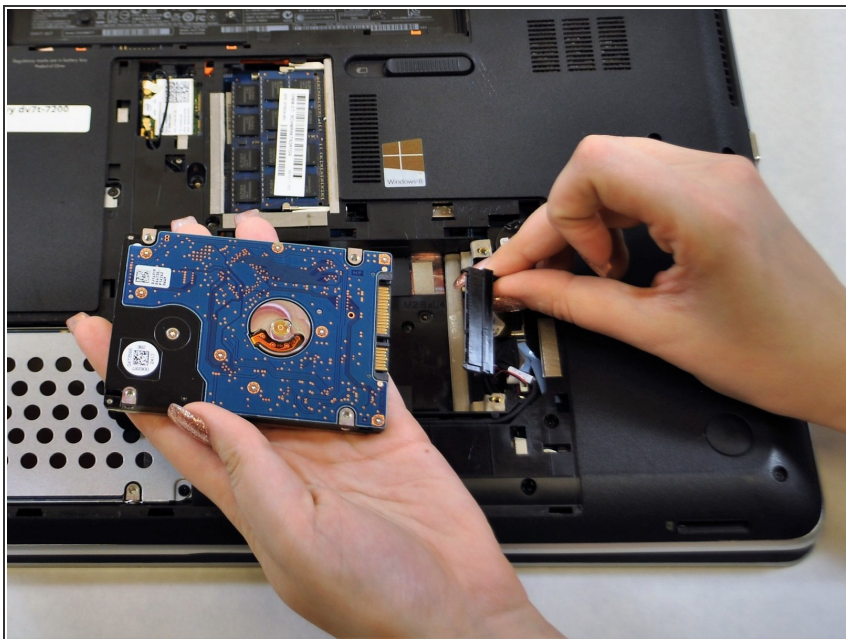
- ❗ Remove the primary drive first located on the right hand side.
- Use the black tab to lift the drive up and out.

Step 8



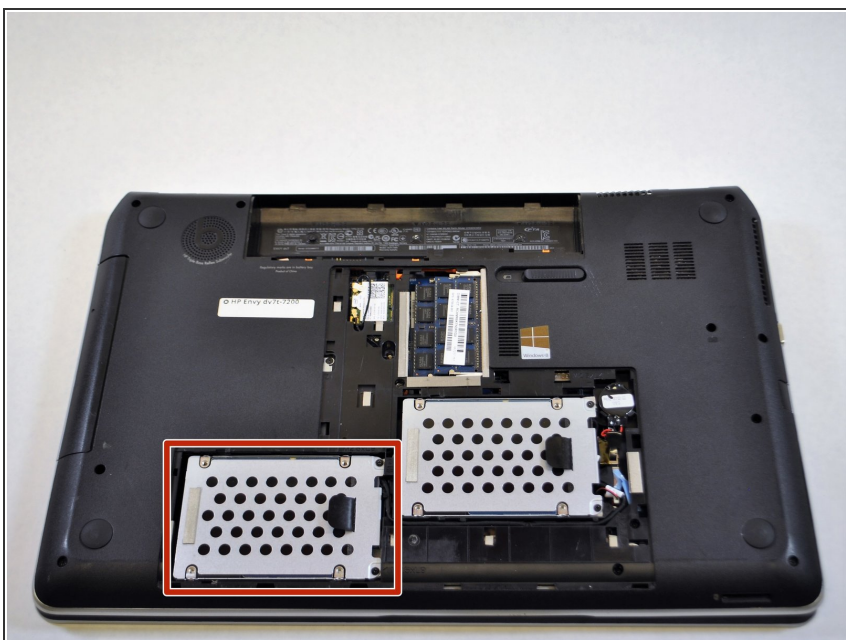
- Remove the 2 Phillips PM2.5x5.5 screws on each side of the drive bracket.

Step 9



- Remove the hard drive connector cable.
- ⓘ This cable can be difficult to remove. Try to pull this cable firmly and carefully.

Step 10



- Repeat steps 6-9 for the secondary hard drive.

To reassemble your device, follow these instructions in the reverse order.