



HP Envy m6-k022dx Lower Case Replacement

Guide for unscrewing the back plate of the HP Envy laptop.

Written By: Jibreel Campbell



INTRODUCTION

To gain access to the inside of the laptop, you will first need to remove the back plate. Make sure you have a PH1 size screwdriver to unscrew all of the screws.



TOOLS:

- [Phillips Head Screwdriver: Size PH1](#) (1)
-

Step 1 — Lower Case



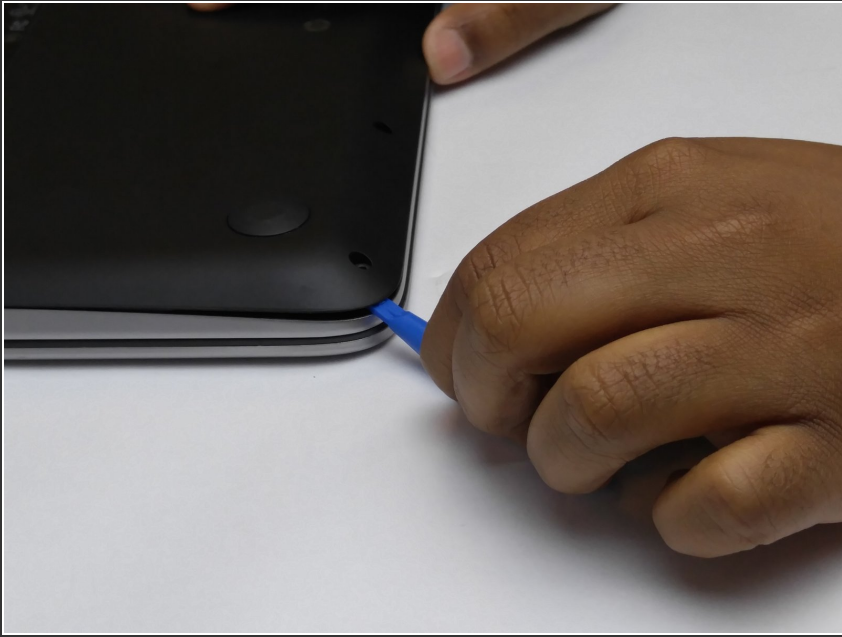
- There are 12 phillips head screws which need to be unscrewed before removing the backplate of the laptop.

Step 2



- Next, use a size PH1 Philips head screw driver to remove the screws.

Step 3



- Then, use a prying tool to help uncouple the backplate.

Step 4



- Finally, use both hands to lift up and take off the back plate of the computer.

To reassemble your device, follow these instructions in reverse order.