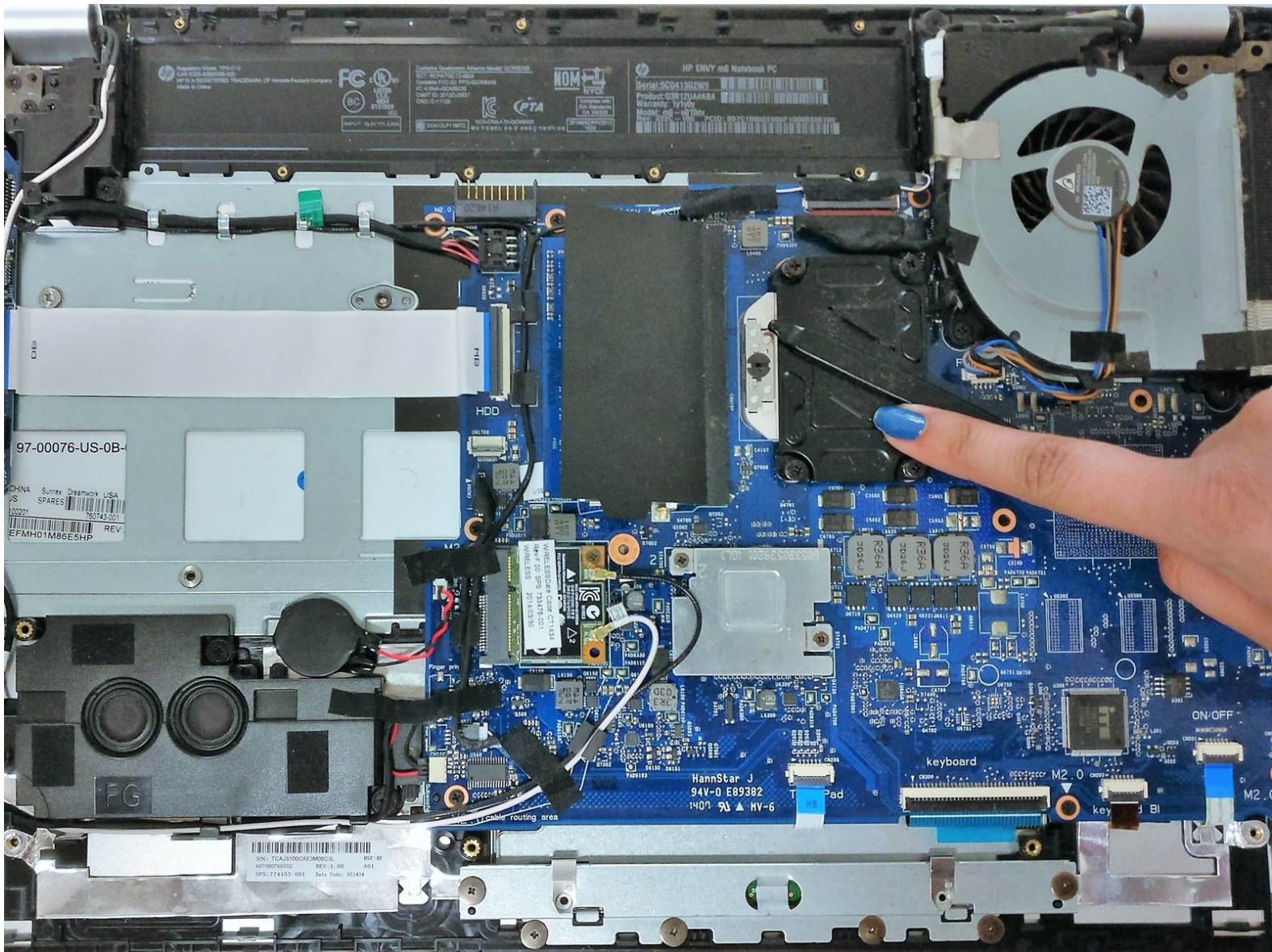




# HP Envy m6-n010dx CPU Replacement

This guide demonstrates how to properly remove the CPU of a HP Envy m6-n010dx.

Written By: Sam Klink



# INTRODUCTION

This guide demonstrates how to properly remove the CPU of a HP Envy m6-n010dx.

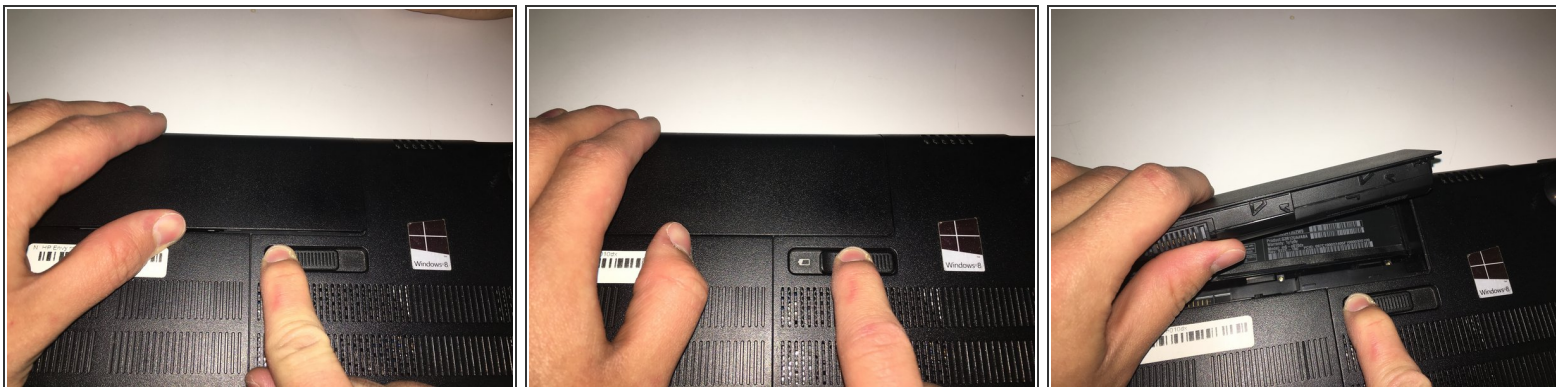


## TOOLS:

- [Phillips #00 Screwdriver](#) (1)
  - [Flathead Screwdriver](#) (1)
  - [Thermal Paste](#) (1)
-

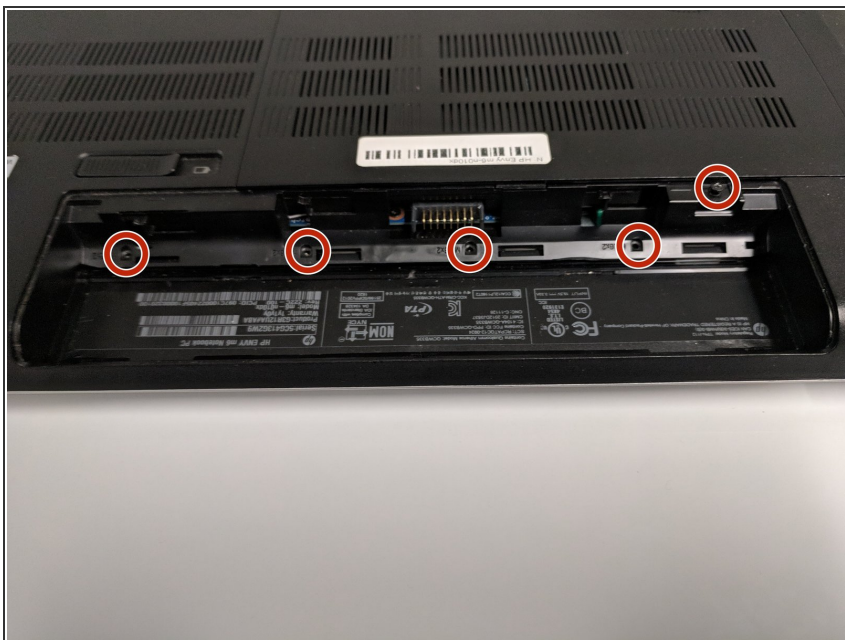


## Step 1 — Battery



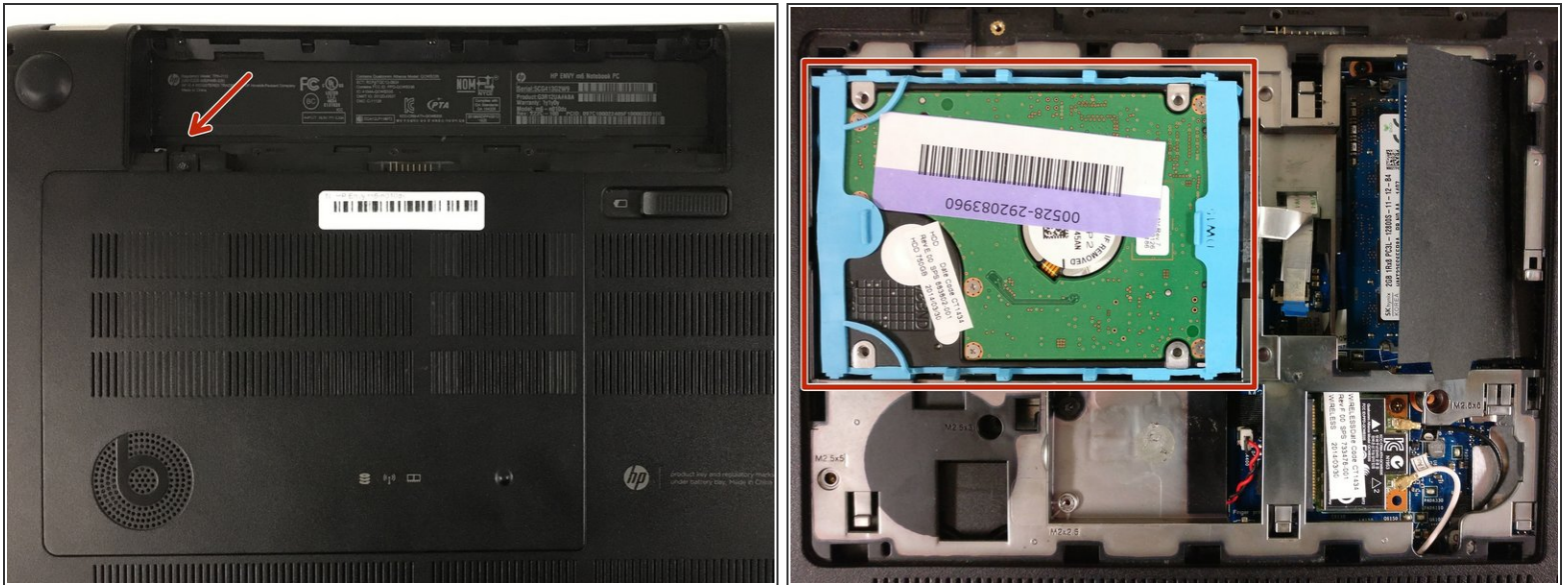
- Find the battery removal slider.
- Slide it across while simultaneously popping out and removing the device's battery.

## Step 2 — Hard Drive



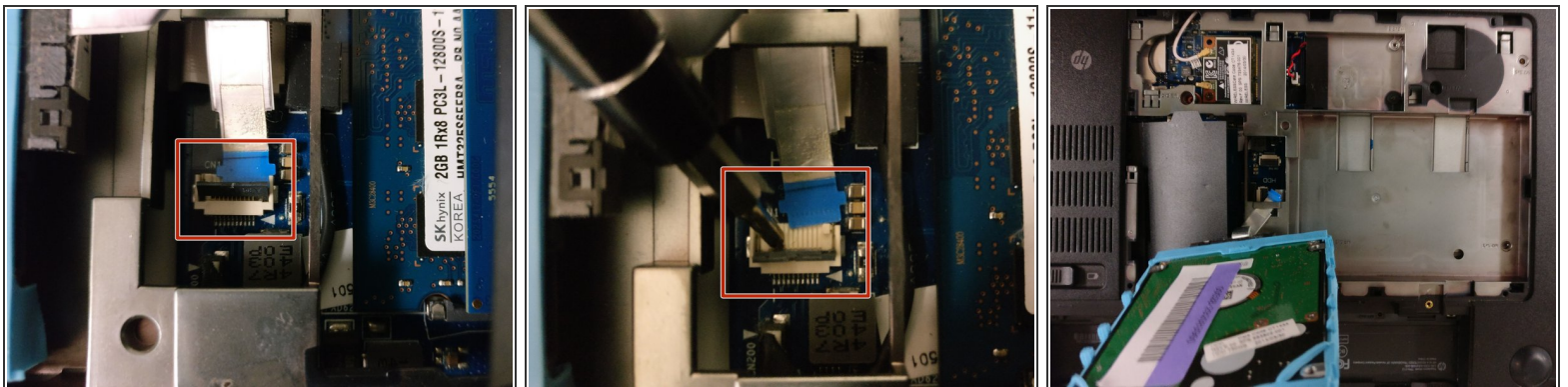
- Remove the five marked screws found under the battery using a philips head screwdriver.

### Step 3



- Remove the small panel on the back by prying it off. This should reveal the hard drive.

### Step 4



- ⓘ The hard drive is connected to the motherboard via this blue-tabbed cable, highlighted in red.
- Gently pry off the cover to release the cable.
- Slowly lift the hard drive out and away from the device.

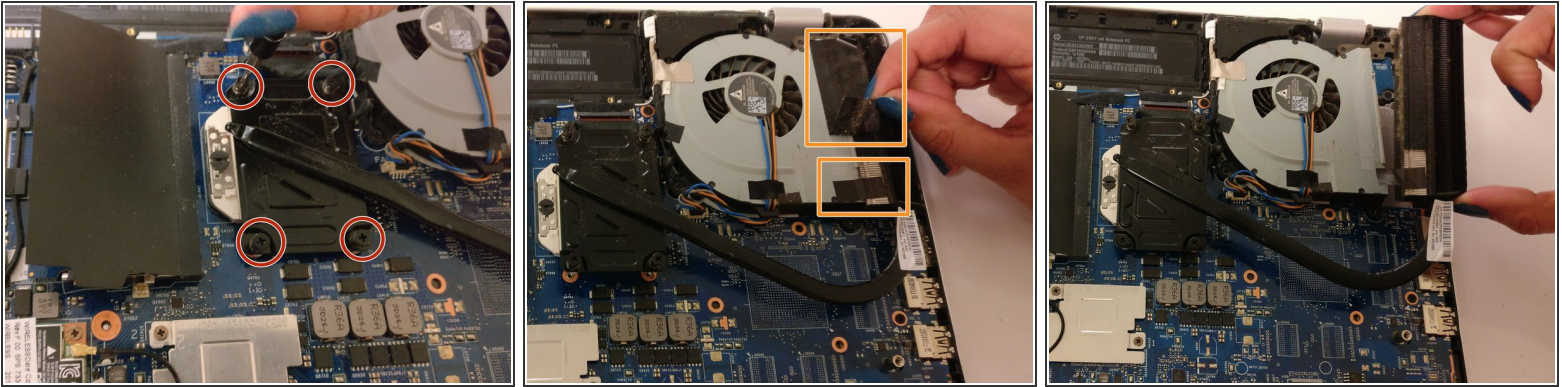


## Step 5 — CPU



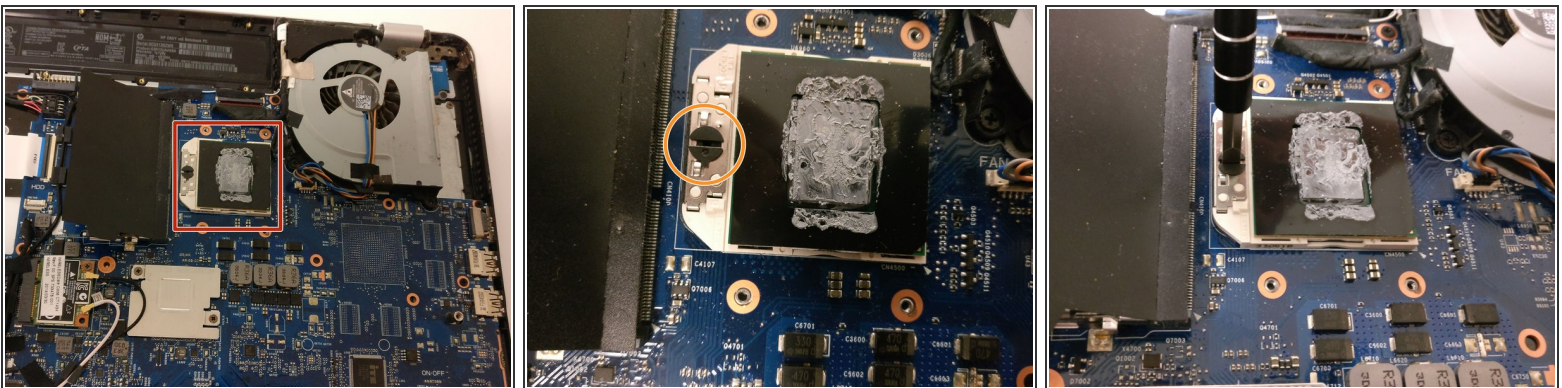
- Remove the 6 highlighted 1.5 mm screws using a #00 philips head screwdriver.
- Pry off the lower two grip pads highlighted in orange.
  - Remove the two additional 1.5mm screws underneath the lower grip pads using a #00 philips head screwdriver.
- ⓘ You may need to use more force than feels necessary.
- Remove the large back panel to reveal the inner workings.
  - The CPU can be found underneath the heatsink, highlighted in yellow.
- ★ The back panel might be difficult to remove. Use a flat object to help pry it off, and don't be afraid to use force.

## Step 6



- Loosen the four 1.5 mm screws on the heat sink using a #00 philips head screwdriver.
  - Remove the tape holding the heatsink to the fan.
  - Remove the heatsink.
- i** When putting everything back together, use a new strip of electrical tape to make sure the parts are properly secured.

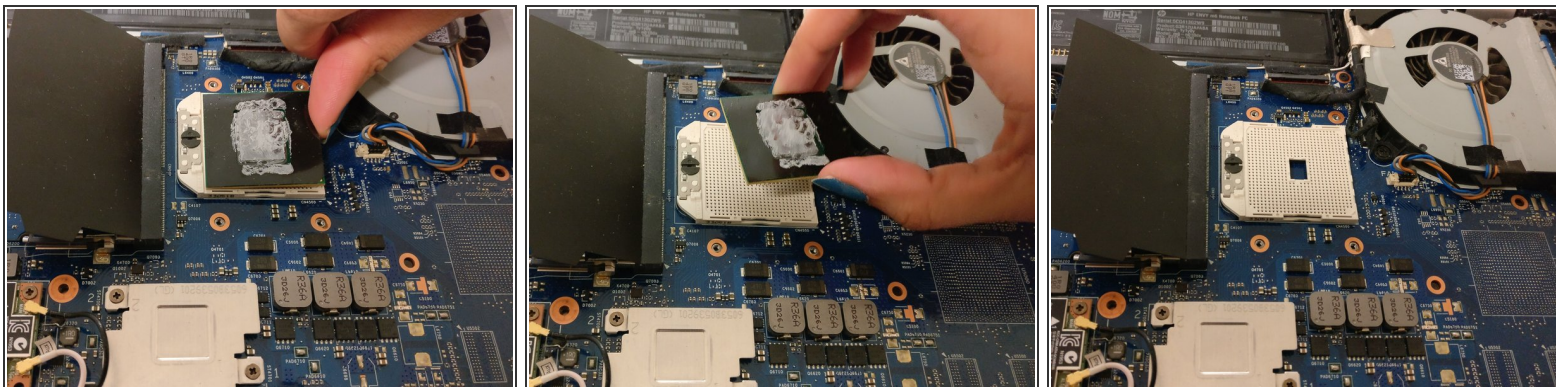
## Step 7



- Find the uncovered CPU highlighted in red.
- Turn the fastener, highlighted in orange, 180 degrees counterclockwise using a flat headed screwdriver to loosen the CPU.



## Step 8



- Gently lift up and remove the CPU
- ⓘ Only lift the CPU by the sides, making sure not to touch the bottom, otherwise you may damage your CPU.
- ☑ Don't forget to apply a few drops of thermal paste when putting in a new CPU.

To reassemble your device, follow these instructions in reverse order. Be sure to apply new thermal paste if you are using a new CPU.