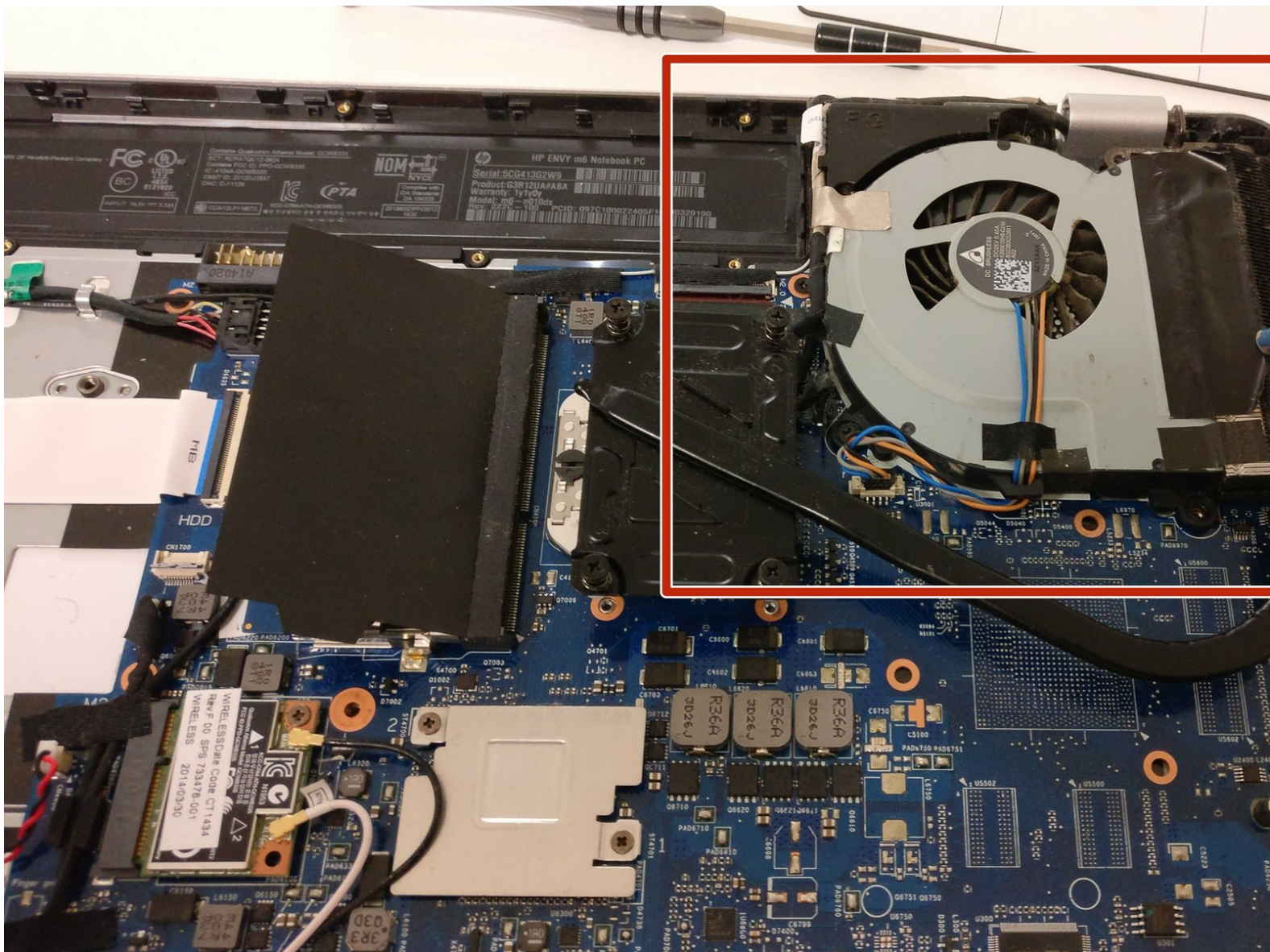




HP Envy m6-n010dx Fan Replacement

This guide demonstrates how to properly remove the fan of a HP Envy m6-n010dx.

Written By: Sandra Ramirez



INTRODUCTION

This guide demonstrates how to properly remove the fan of a HP Envy m6-n010dx. You will be using a Phillips 00 screwdriver throughout this guide.



TOOLS:

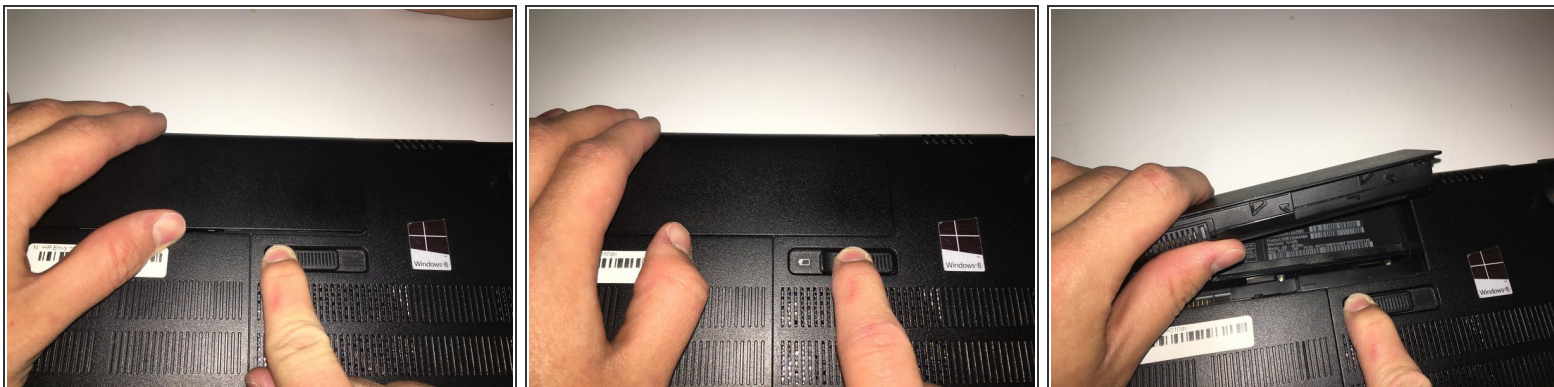
- [Spudger](#) (1)
- [Phillips #00 Screwdriver](#) (1)
- [Prying and Opening Tool Assortment](#) (1)



PARTS:

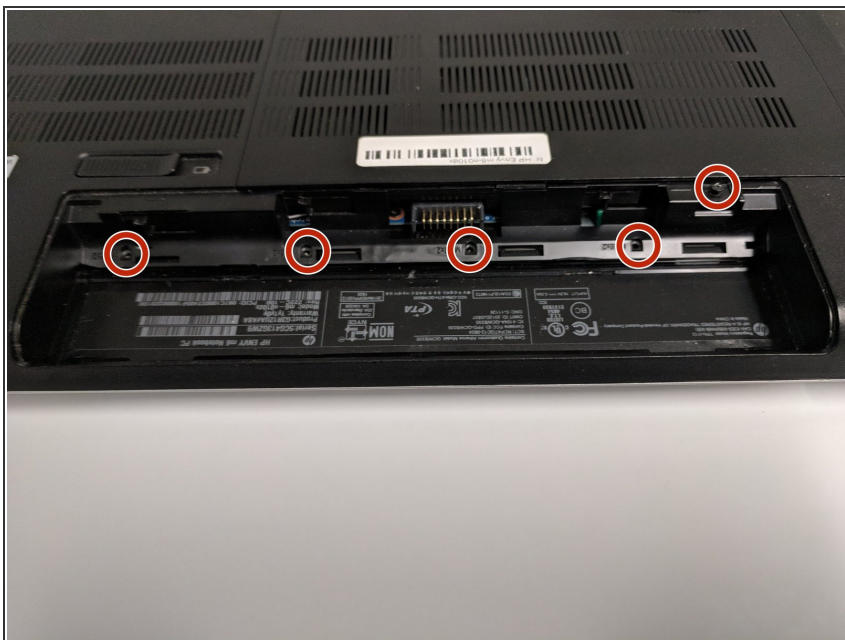
- [CPU Cooling Fan For HP Envy](#) (1)
- [Electrical Tape in 6 Assorted Colors](#) (1)

Step 1 — Battery



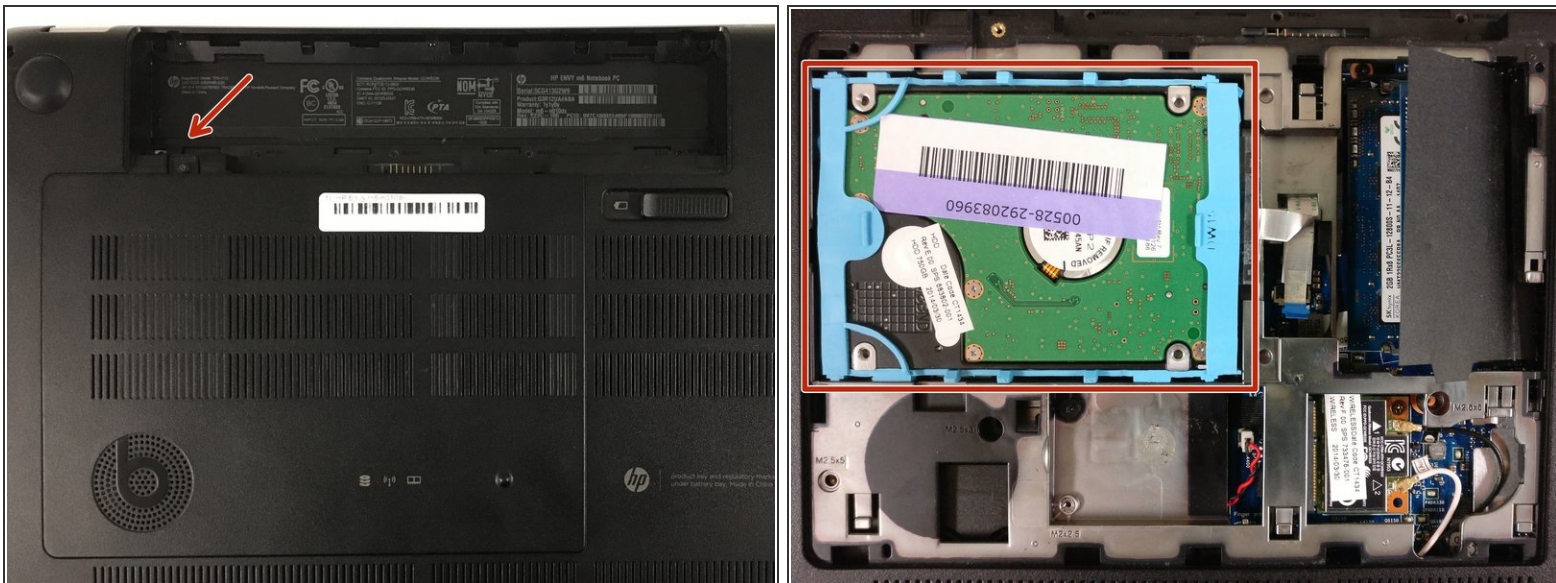
- Find the battery removal slider.
- Slide it across while simultaneously popping out and removing the device's battery.

Step 2 — Hard Drive



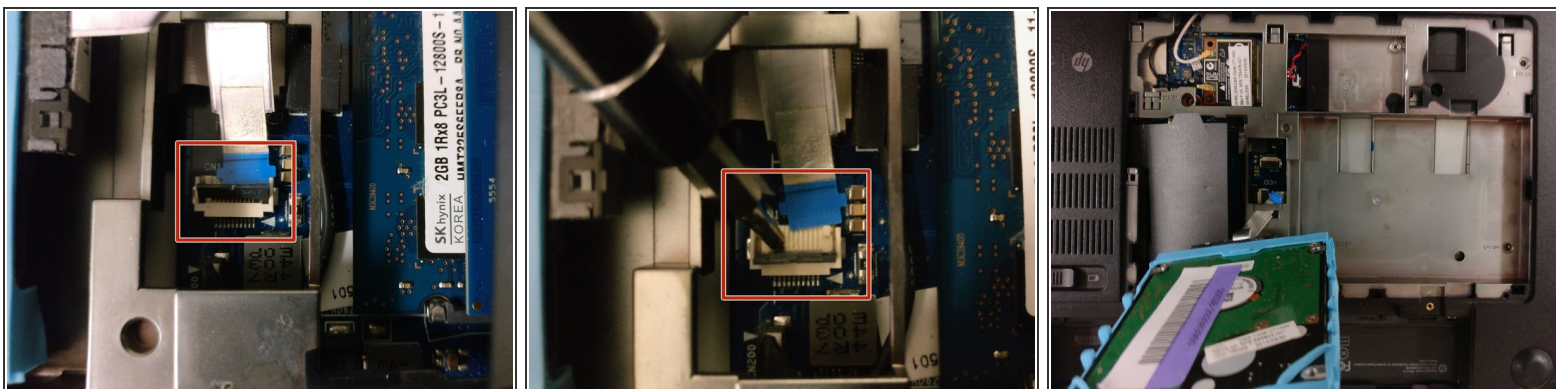
- Remove the five marked screws found under the battery using a philips head screwdriver.

Step 3



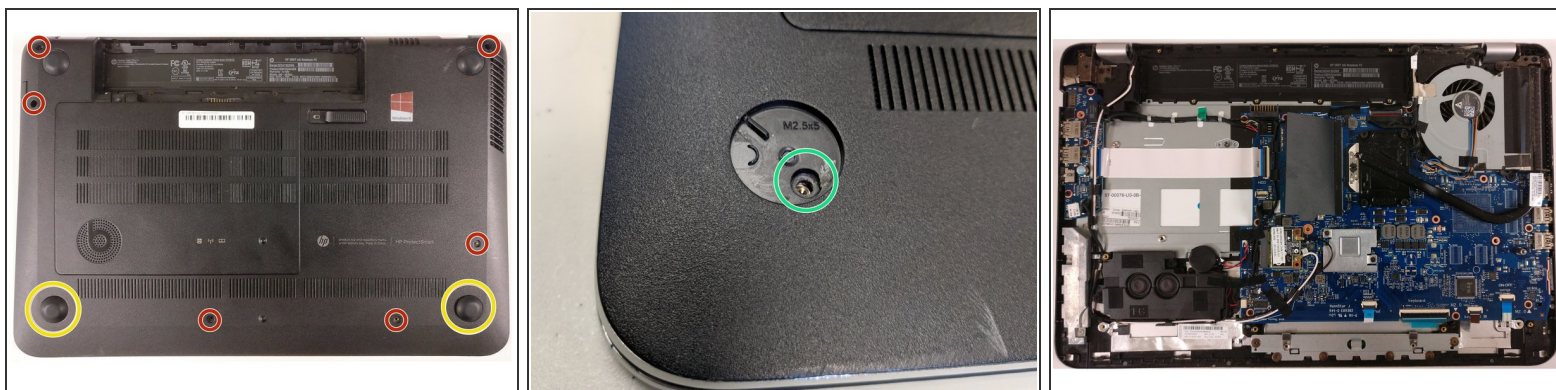
- Remove the small panel on the back by prying it off. This should reveal the hard drive.

Step 4



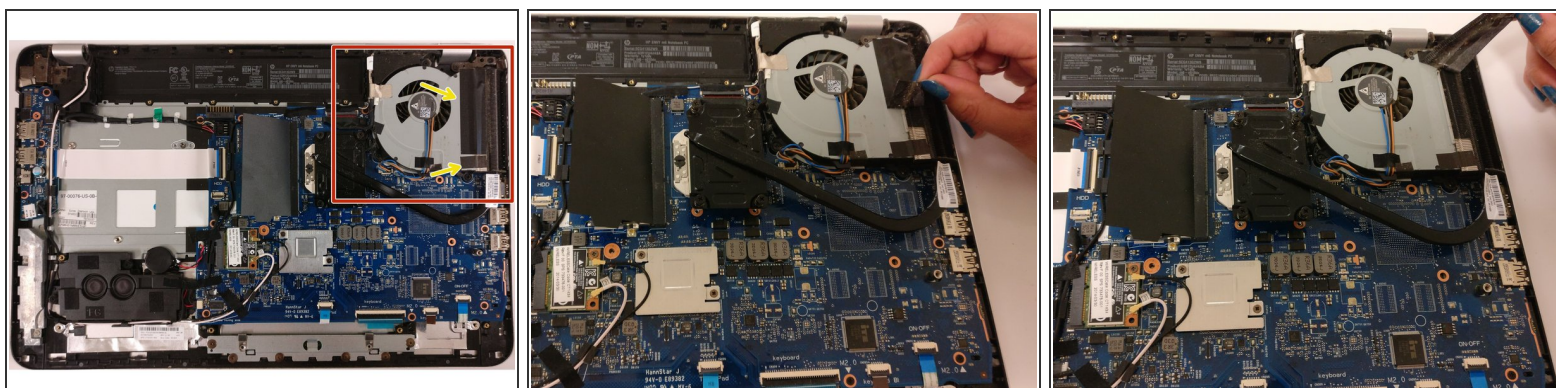
- ⓘ The hard drive is connected to the motherboard via this blue-tabbed cable, highlighted in red.
- Gently pry off the cover to release the cable.
- Slowly lift the hard drive out and away from the device.

Step 5 — Fan



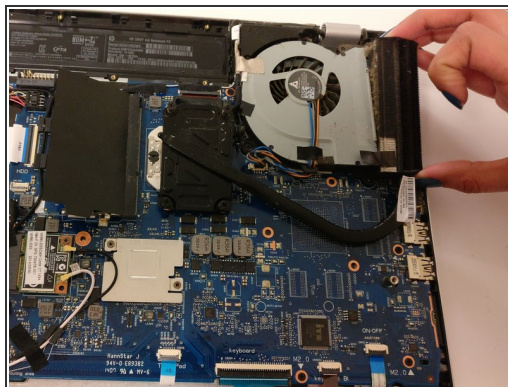
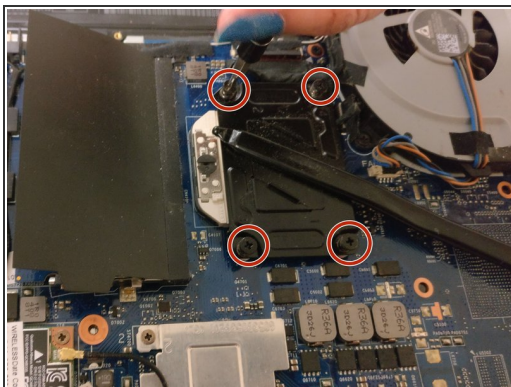
- Remove the screws highlighted in red
- Pry off with prying tool the lower two grip pads highlighted in orange
 - ⓘ You may need to use more force than feels necessary
- Remove the two additional screws underneath the lower grip pads
- Remove the large back panel to reveal the inner workings
 - ⓘ The back panel might be difficult to remove. Use a flat object to help pry it off, and don't be afraid to use force.

Step 6



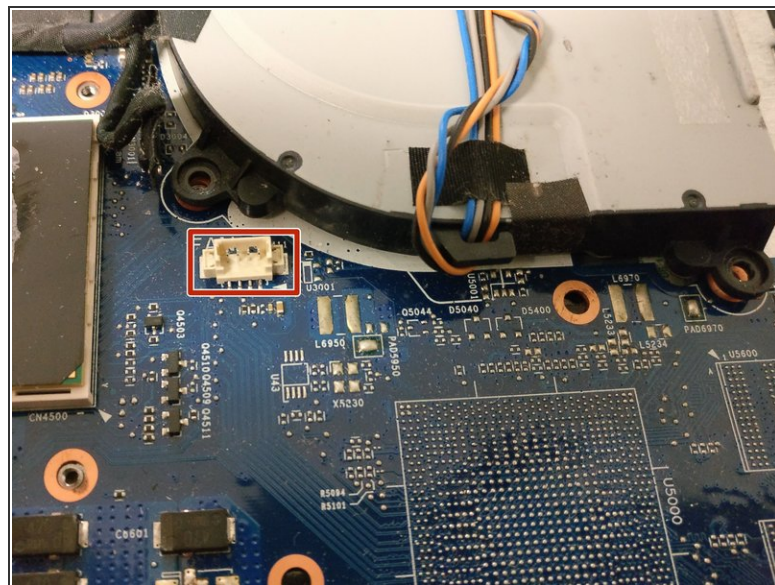
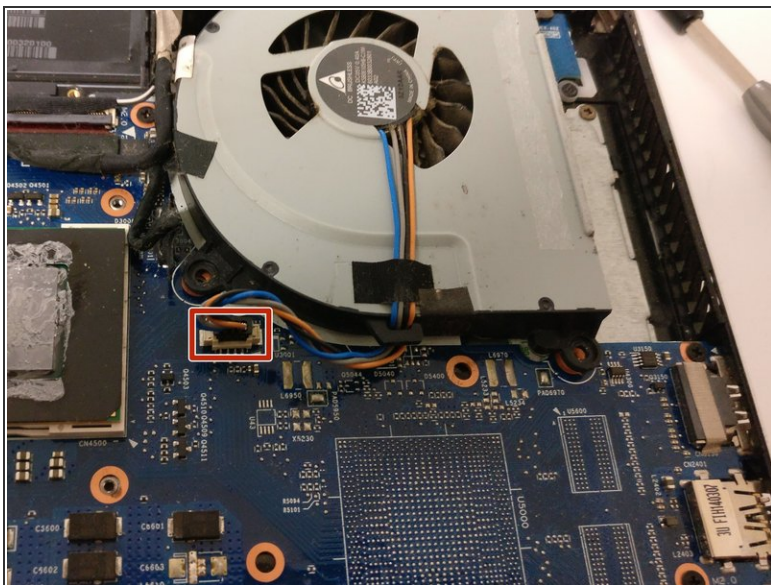
- Locate fan
- Gently remove tape that hold the heatsink and fan together
 - ⓘ When reassembling , make sure to use new electrical tape so it will stick.

Step 7



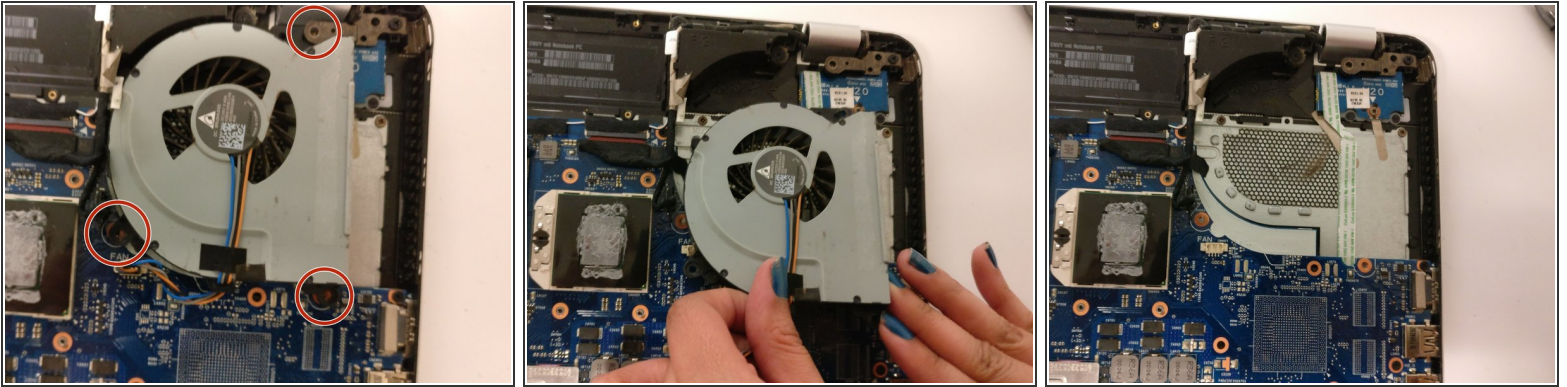
- Loosen the four screws on the heat sink indicated in picture
- Remove the heatsink

Step 8



- Gently disconnect the wire connecting the fan to the motherboard

Step 9



- Remove screws indicated in photo.
- Remove fan

To reassemble your device, follow these instructions in reverse order.