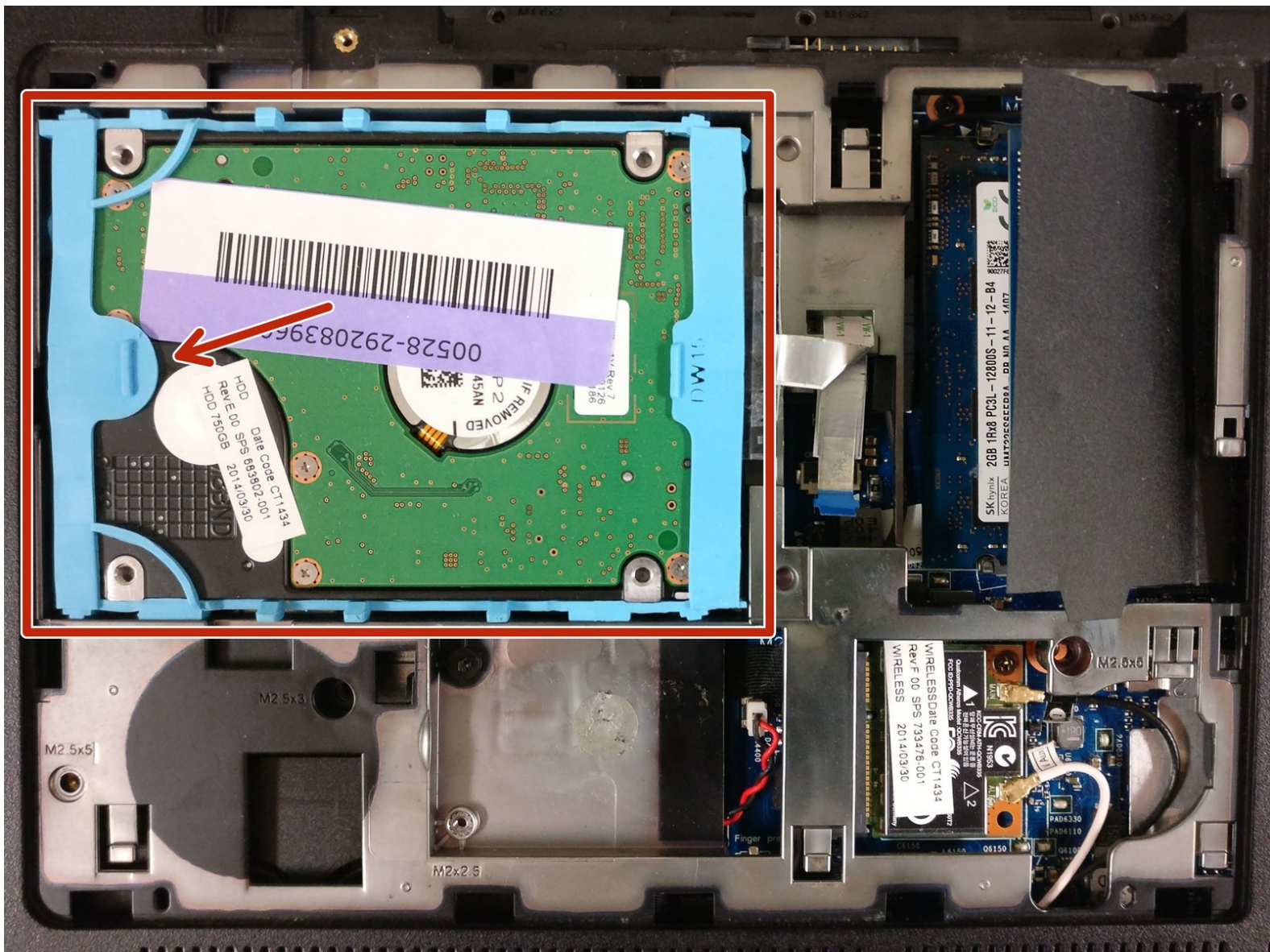




HP Envy m6-n010dx Hard Drive Replacement

How to remove the Hard Drive of a HP Envy m6-n010dx.

Written By: Johnathan Morales



INTRODUCTION

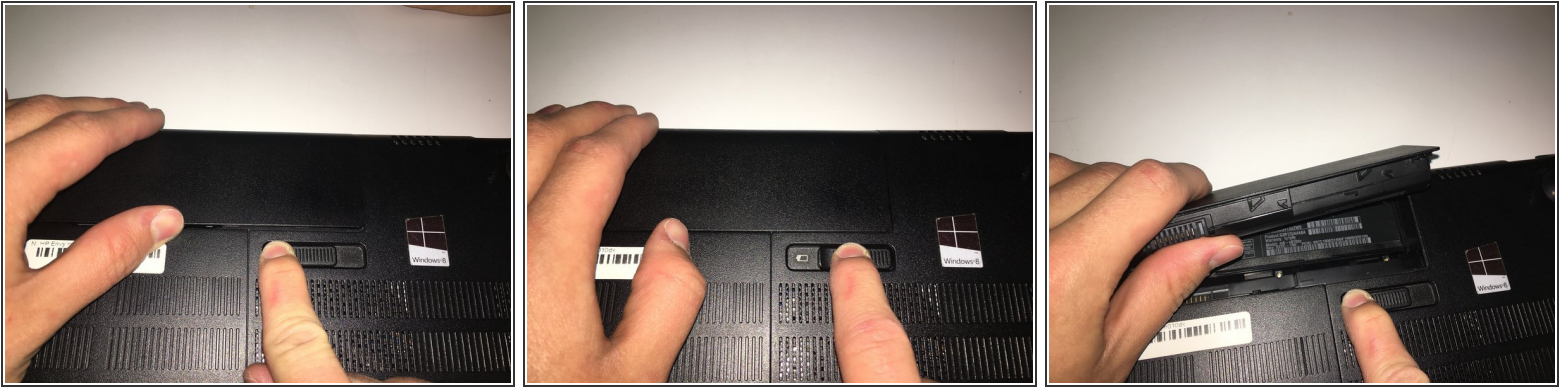
This guide demonstrates how to properly remove the Hard Drive of a HP Envy m6-n010dx.



TOOLS:

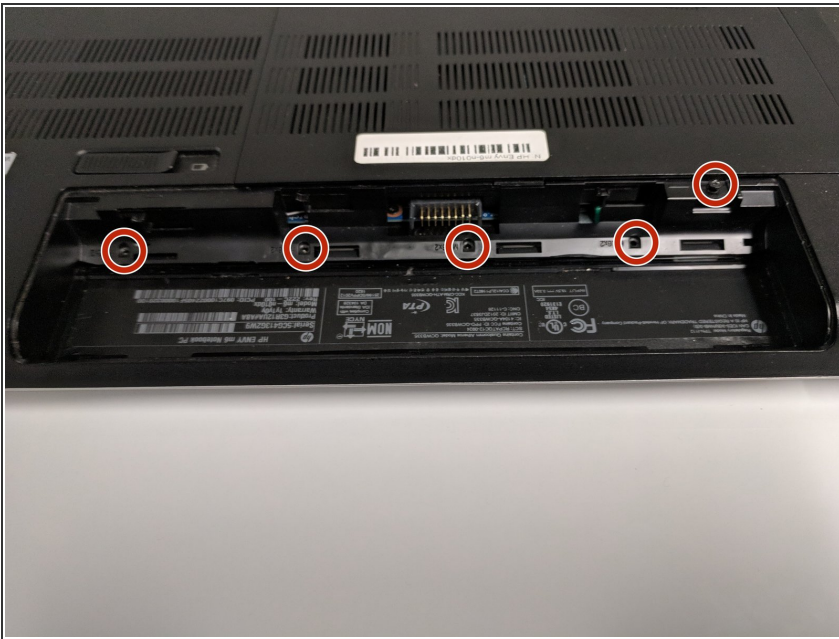
- [Phillips #00 Screwdriver](#) (1)
 - [Spudger](#) (1)
-

Step 1 — Battery



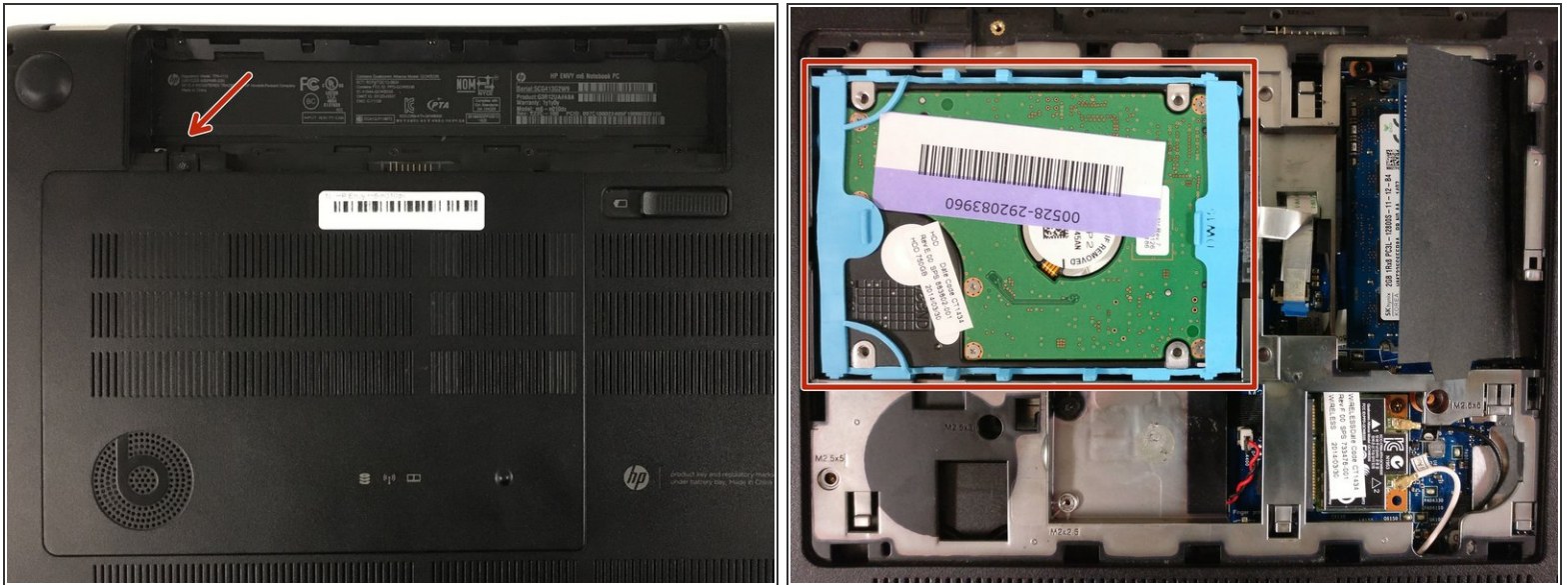
- Find the battery removal slider.
- Slide it across while simultaneously popping out and removing the device's battery.

Step 2 — Hard Drive



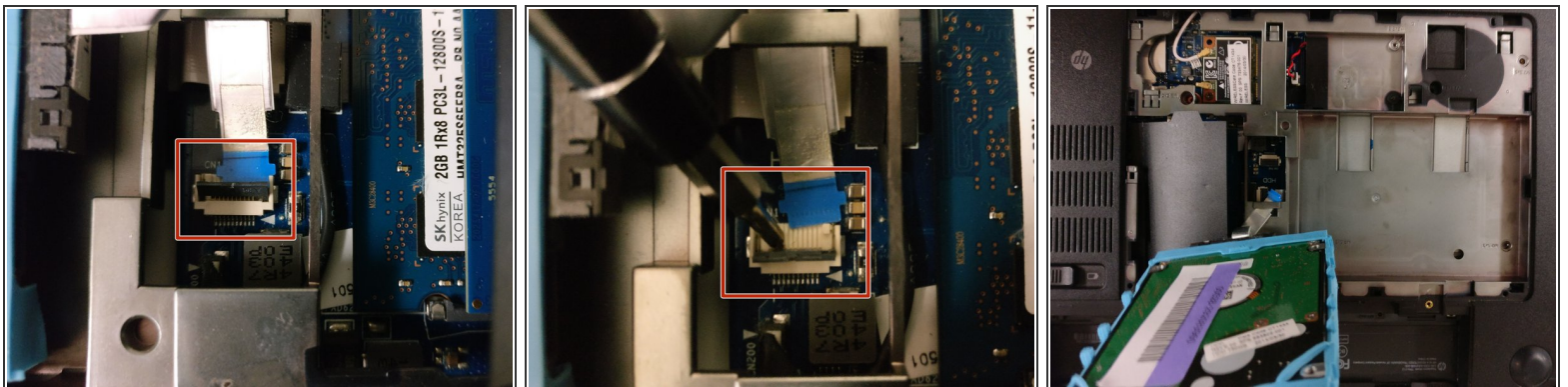
- Remove the five marked screws found under the battery using a philips head screwdriver.

Step 3



- Remove the small panel on the back by prying it off. This should reveal the hard drive.

Step 4



- ⓘ The hard drive is connected to the motherboard via this blue-tabbed cable, highlighted in red.
- Gently pry off the cover to release the cable.
- Slowly lift the hard drive out and away from the device.

To reassemble your device, follow these instructions in reverse order.